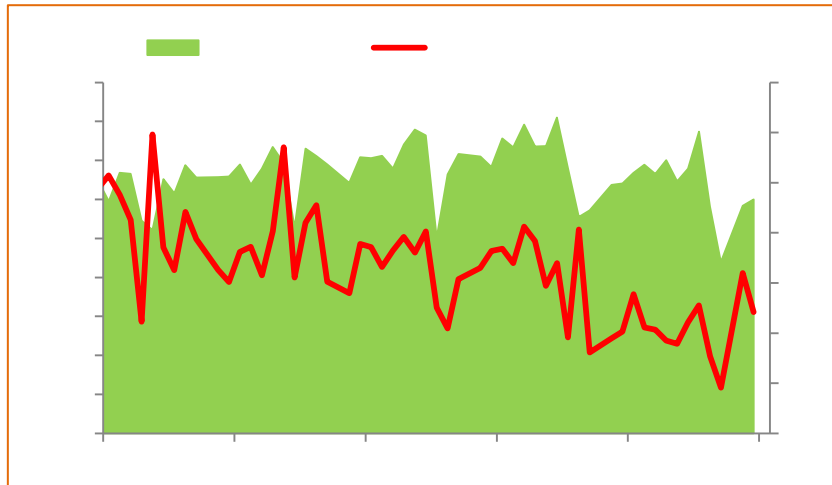


1-4
2016 5 9

-7.6% 4 455.62 4 -1.8% 11.5% 4 -10.9%,
298.6
3 4
2750-3250

1

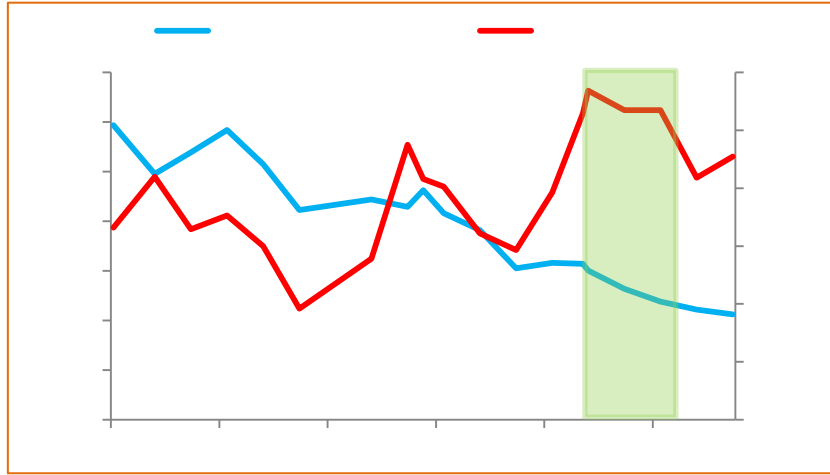
1 PMI 3 3 1-3
-9% 1-4 -7.59% 1-3 -13.4% 1-4
-12.76%
1-4 0.3%
, 1-4 4.8% 3.1% 2%



2

3.78% 1 0.13%

" 811"





--

"

020-22139858

020

"