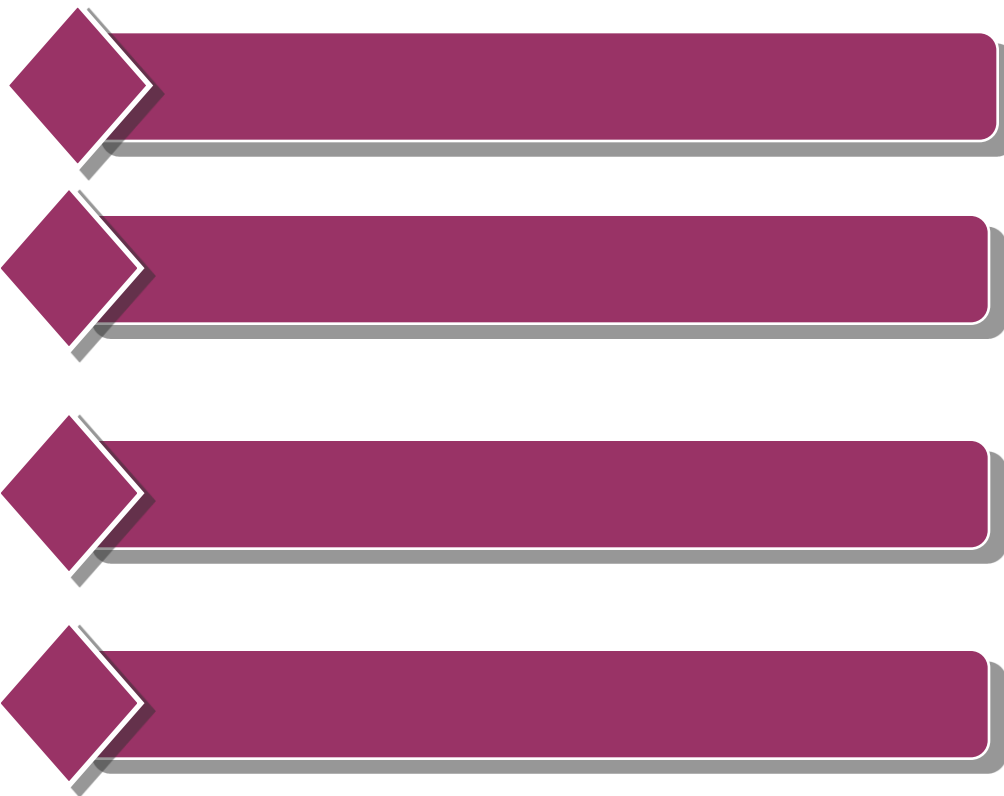
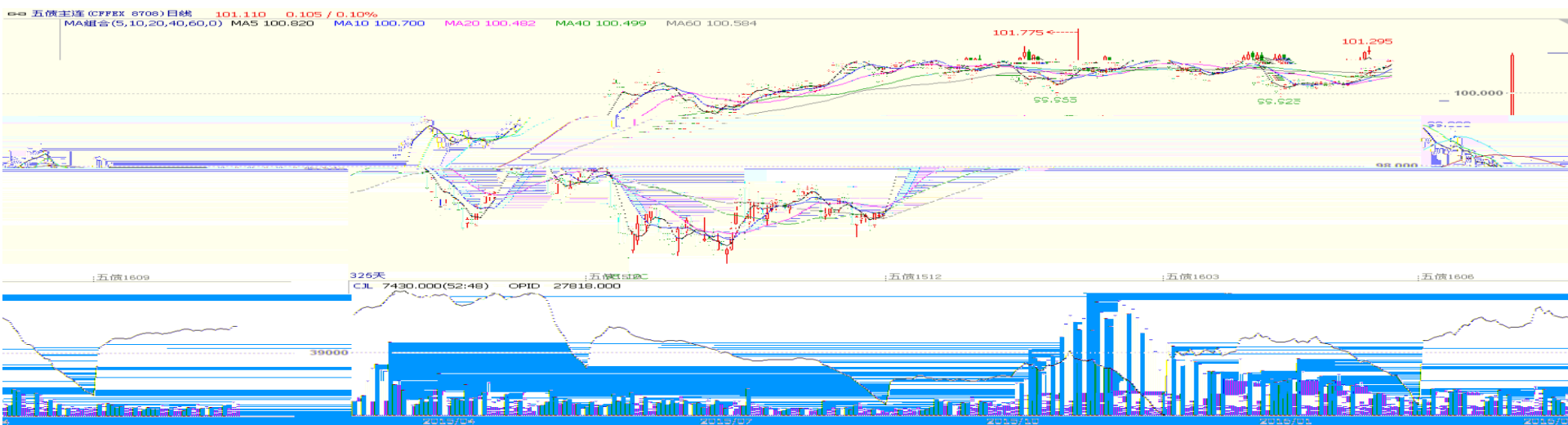


可信 亲切 专业 | 您身边的期货专家

目录



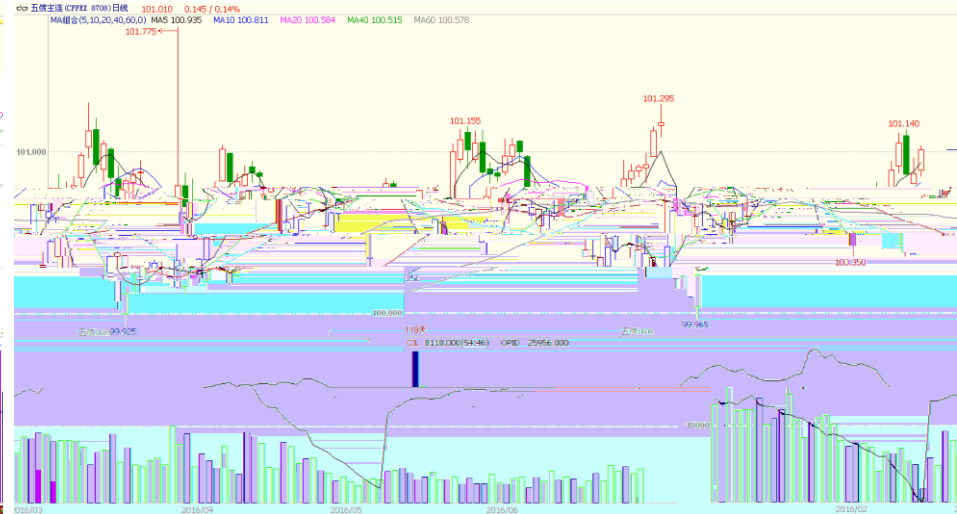




10

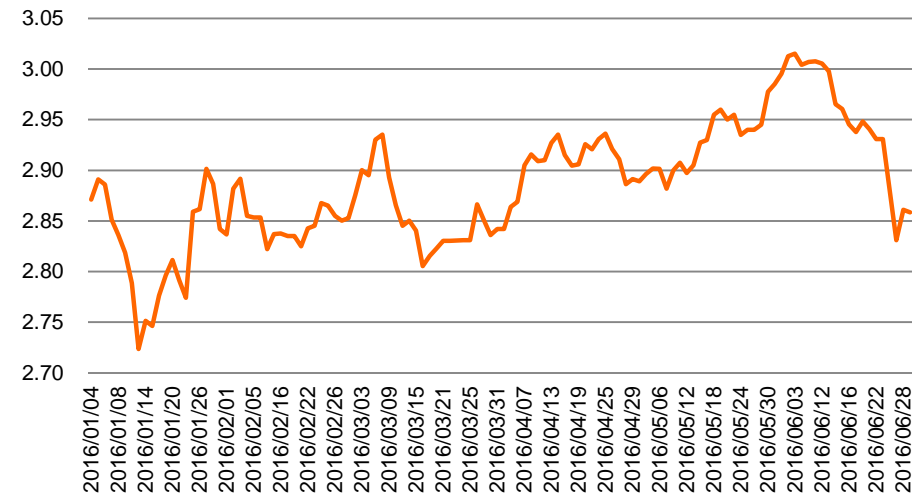


5



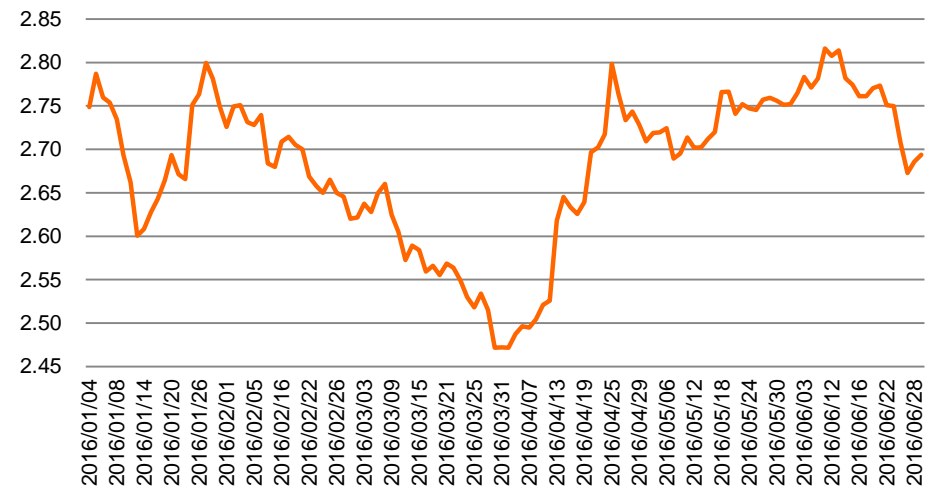
10

%



5

%



2016



1. 2016年1-3月

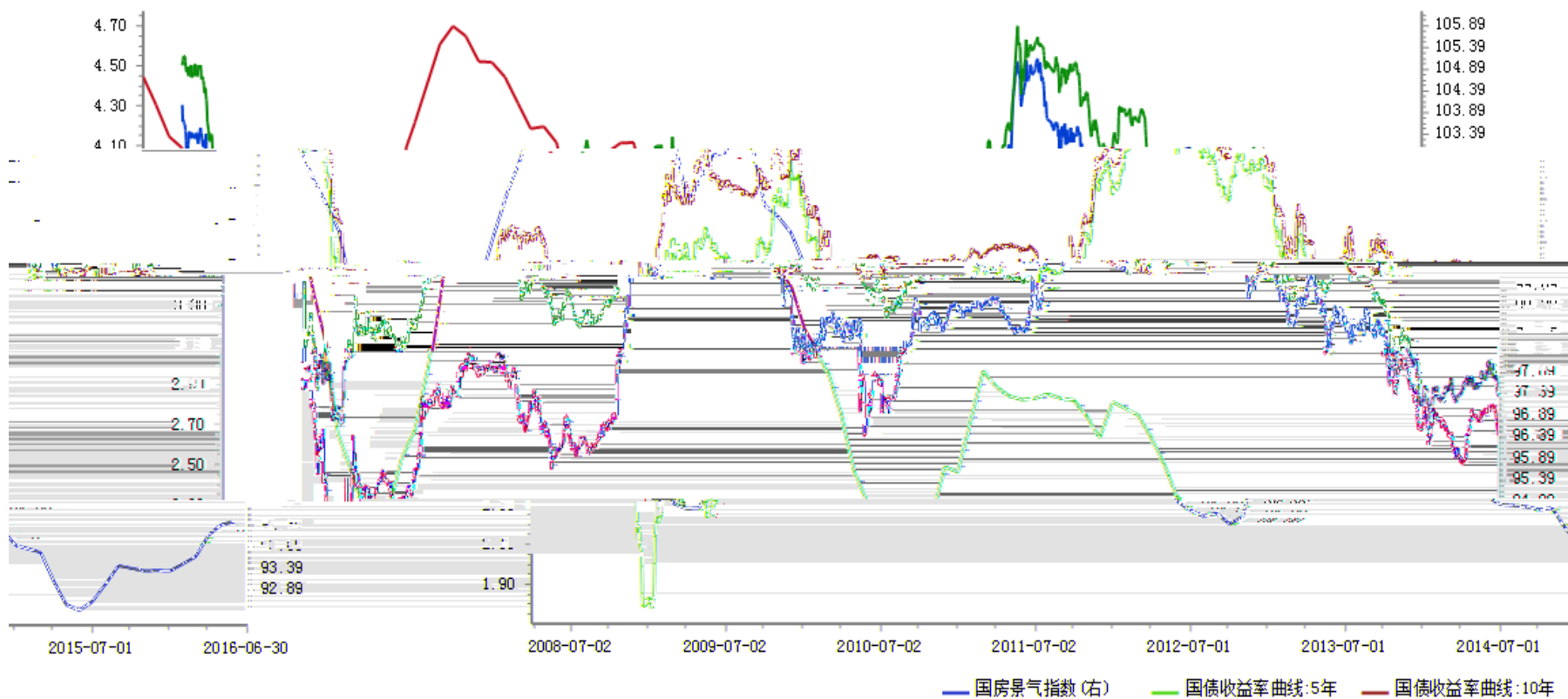
-
-
-
-

2. 2016年4-6月

-
-

3. 2016年7-9月

-



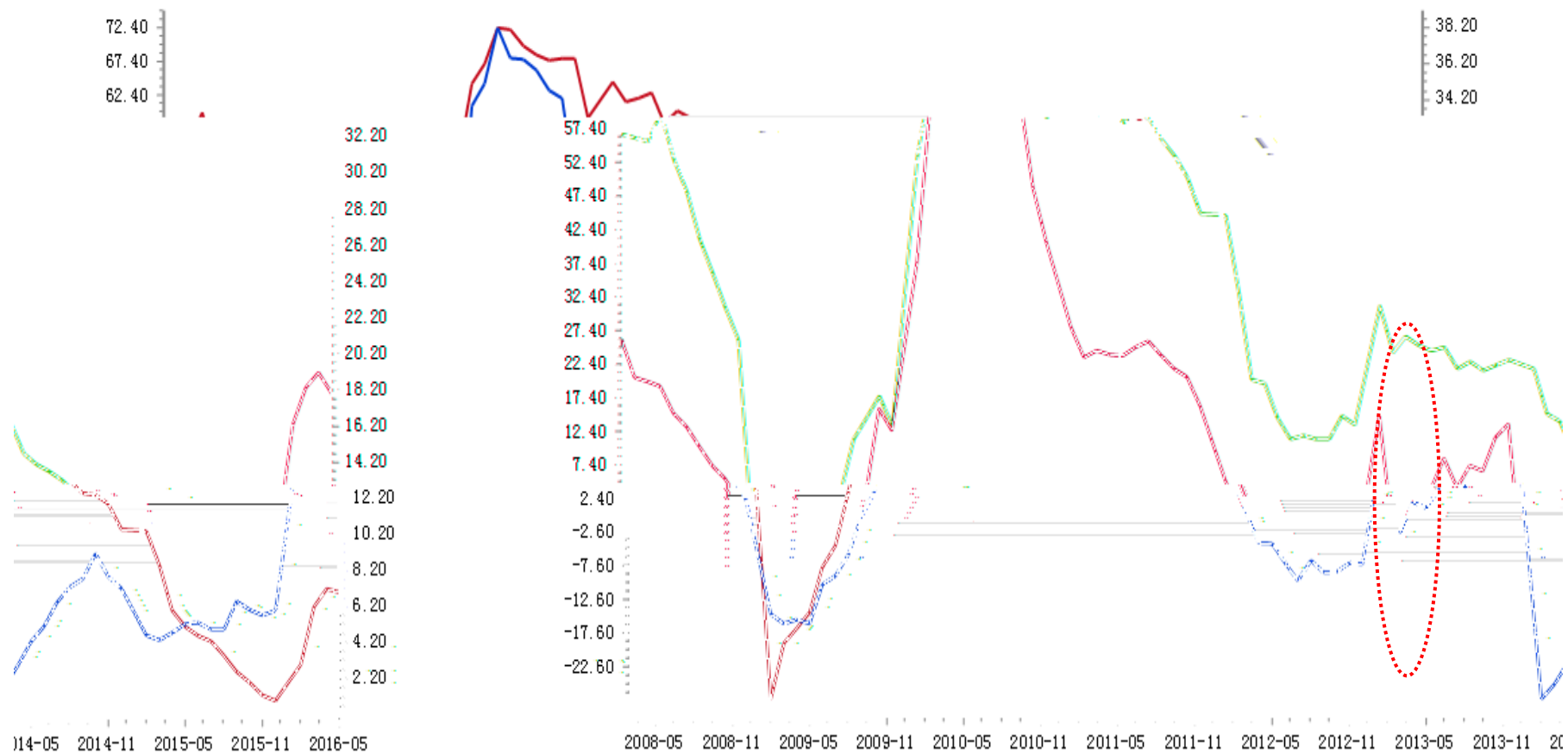
数据来源: 同花顺iFinD



L



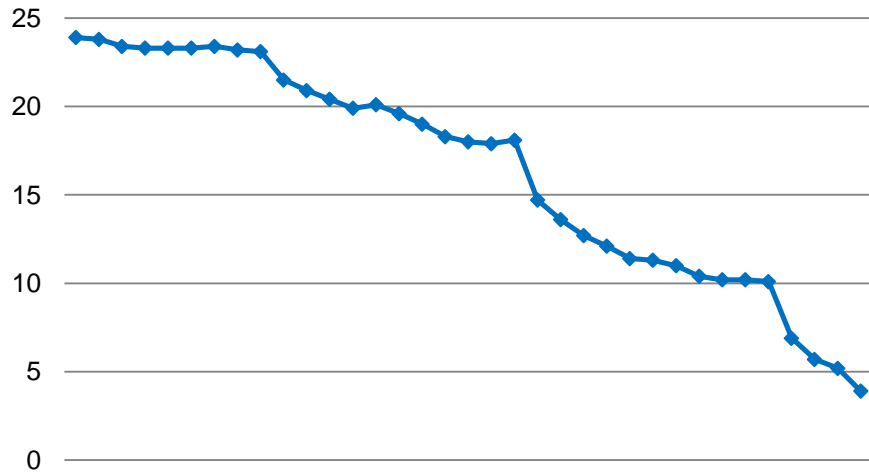
PMI 50



此

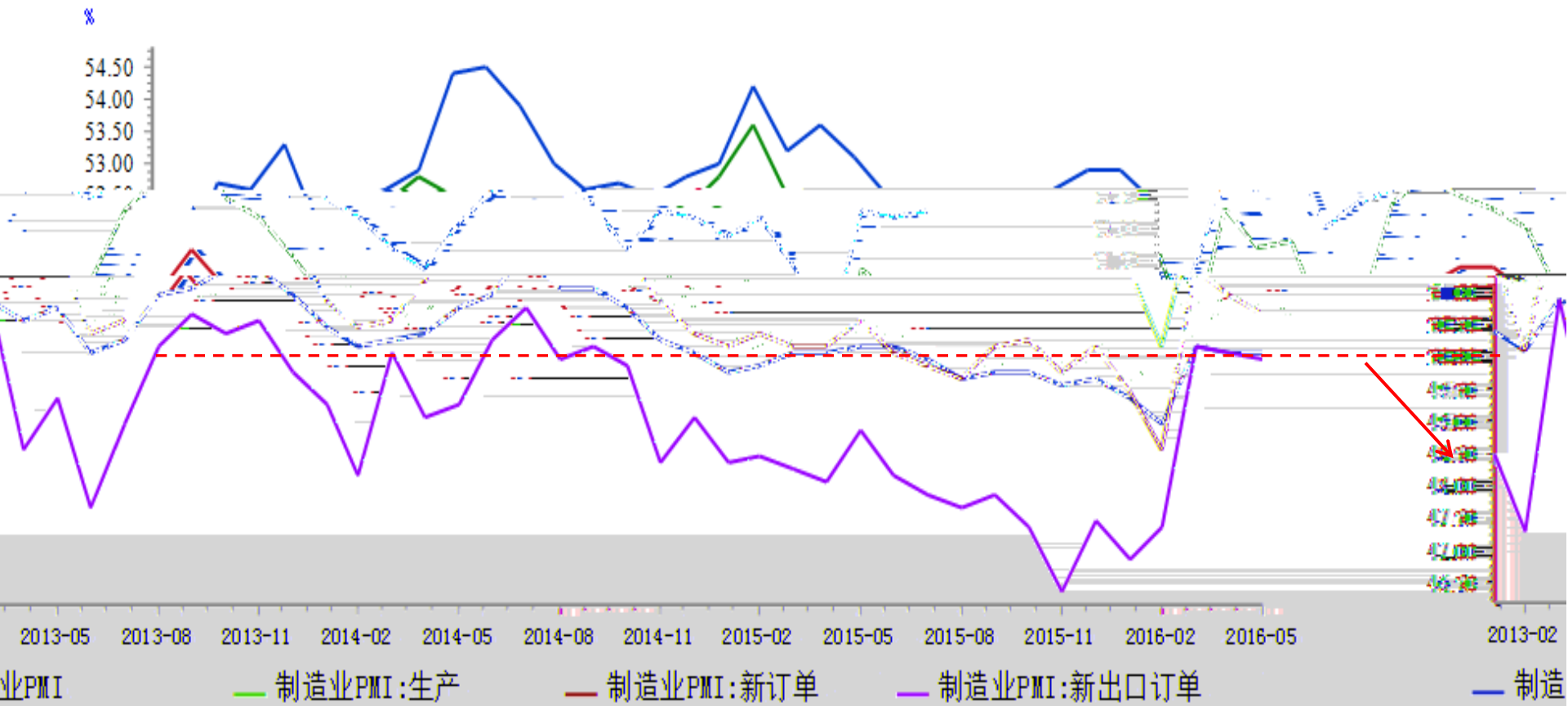
数据来源: 同花顺iFind

— 房地产开发投资: 累计同比 (右) — 商品房新开工面积: 累计同





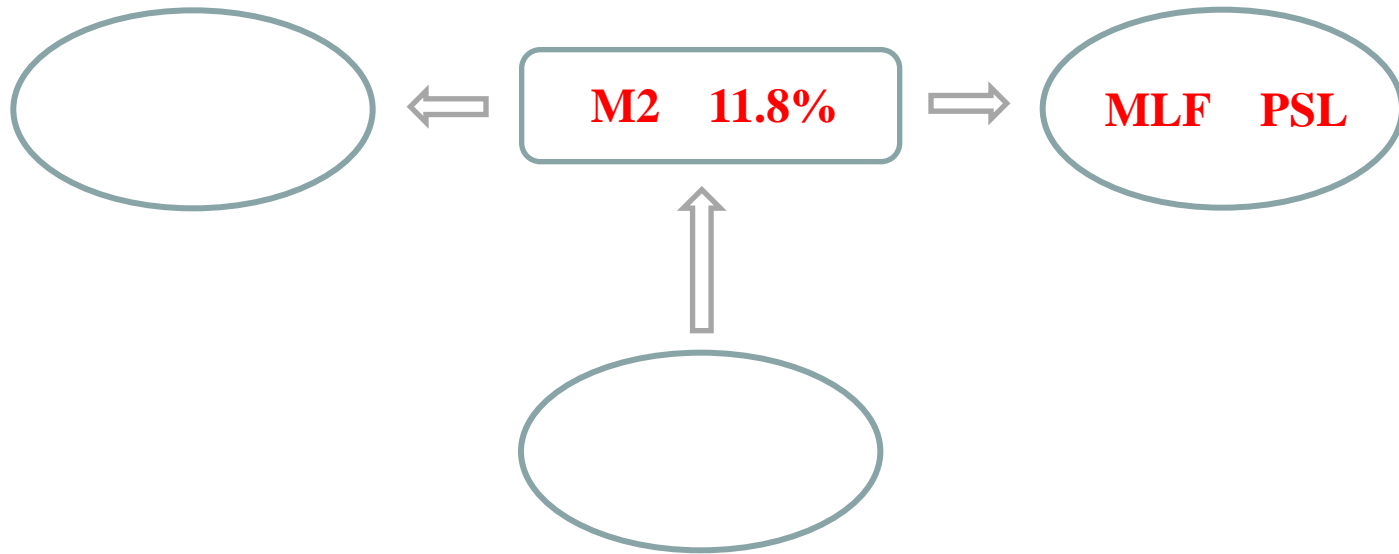
PMI

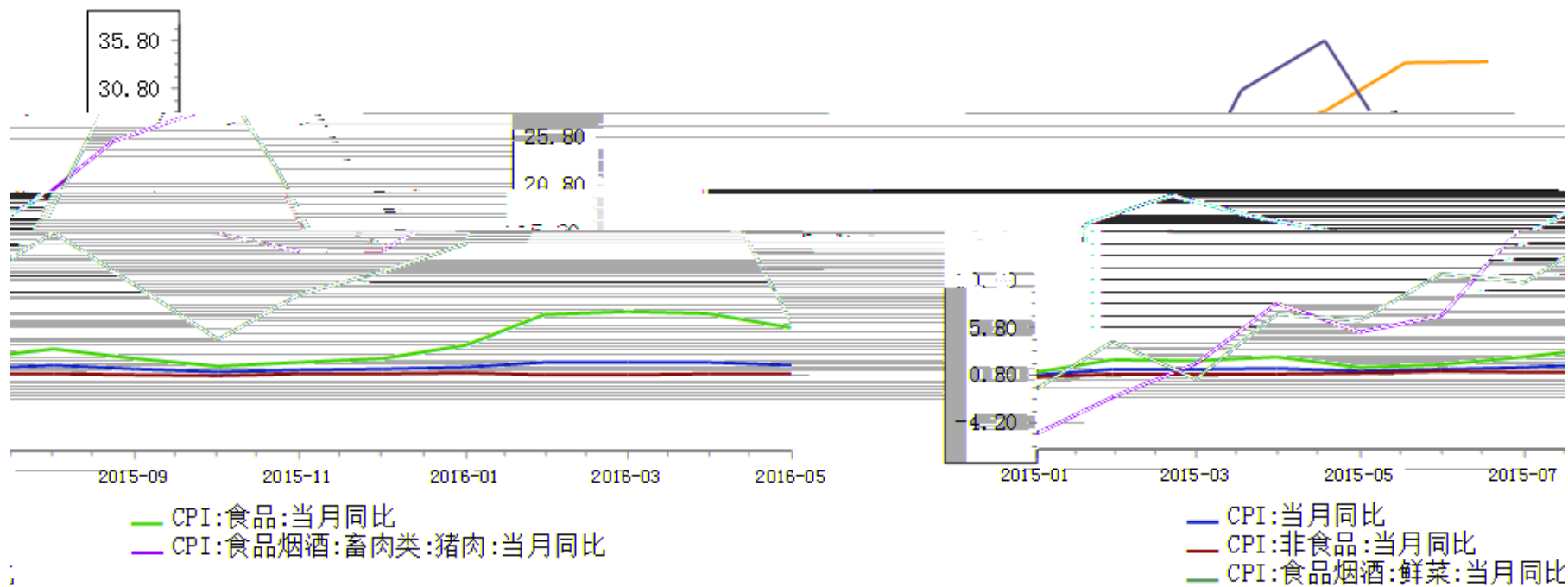


数据来源: 同花顺iFinD



-
-



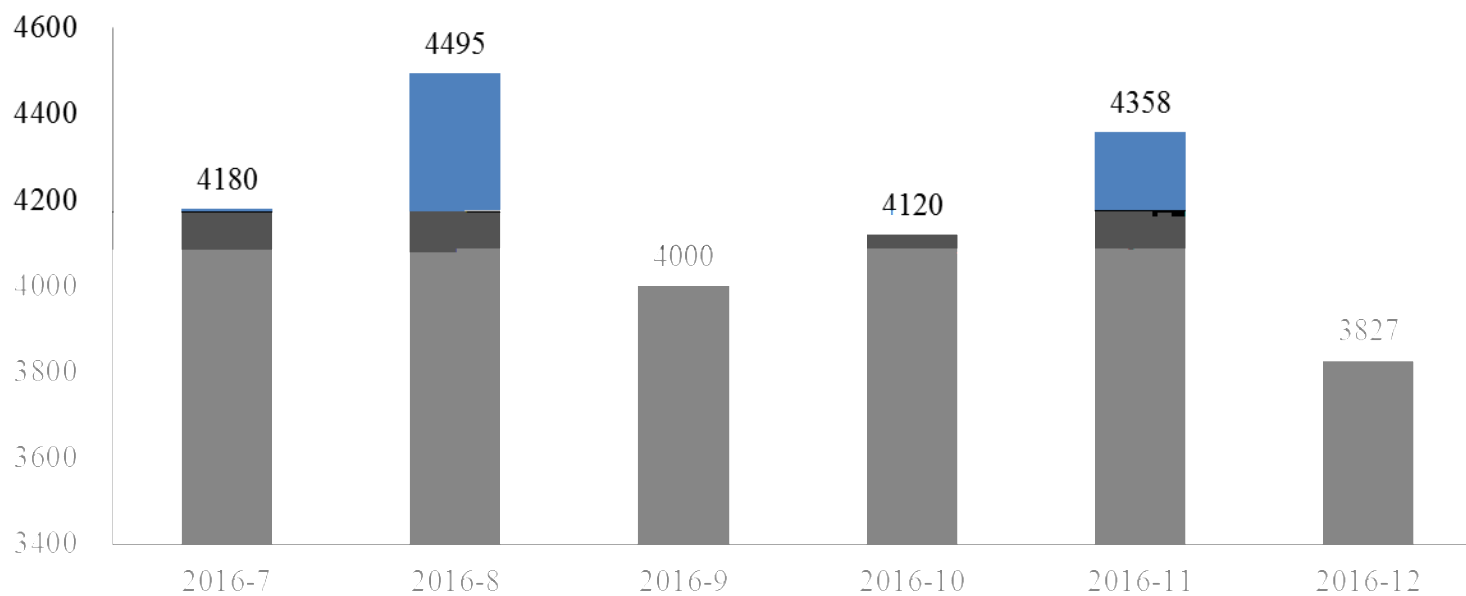


数据来源: 同花顺iFinD





信用债到期量（亿元）



Wind







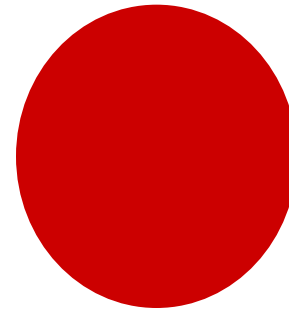
5



● 10

5

1	5	10	
更			
2)
3	10		5
T1609	TF1609		T1612
	TF1612		





THANK YOU

替 DR D EL R CR RO L A
dvc .
3 .06 3