



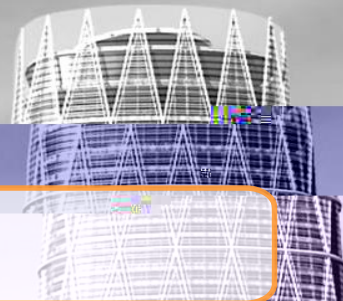
2018

广州期货研究所

薛丽冰

(从业资格号：F0279850)





[Empty text box]

[Empty text box]

[Empty text box]

[Empty text box]

[Empty text box]

[Empty text box]

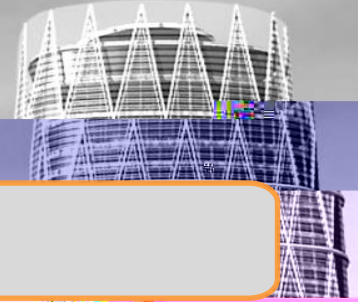




沪金主连 (SHME 2284) 月线

对接





[Empty text box]



[Empty text box]



[Empty text box]



[Empty text box]



[Empty text box]

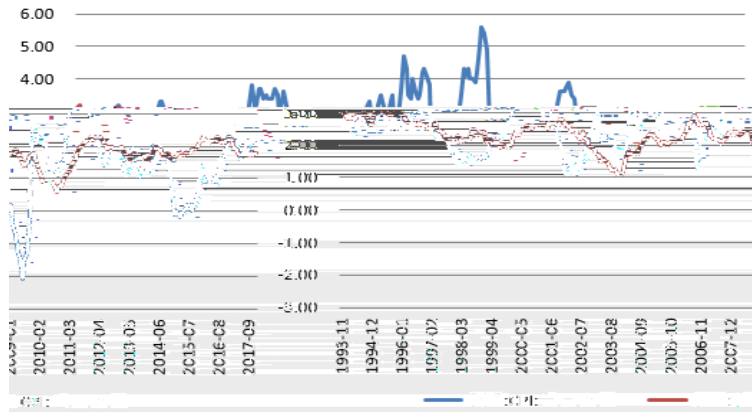


[Empty text box]



2018

美国CPI

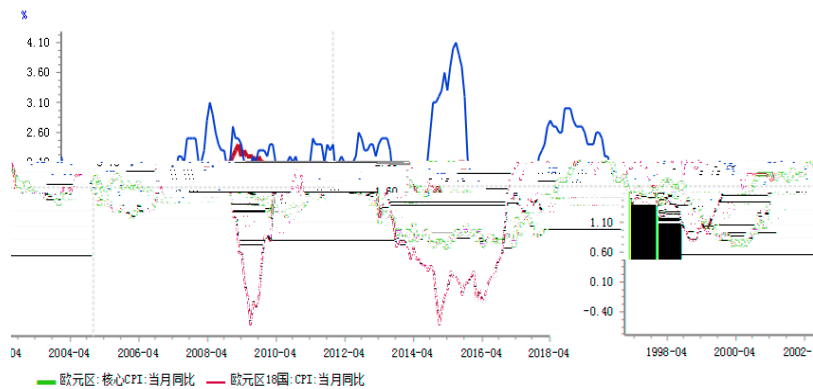


美国失业率及非农就业人数



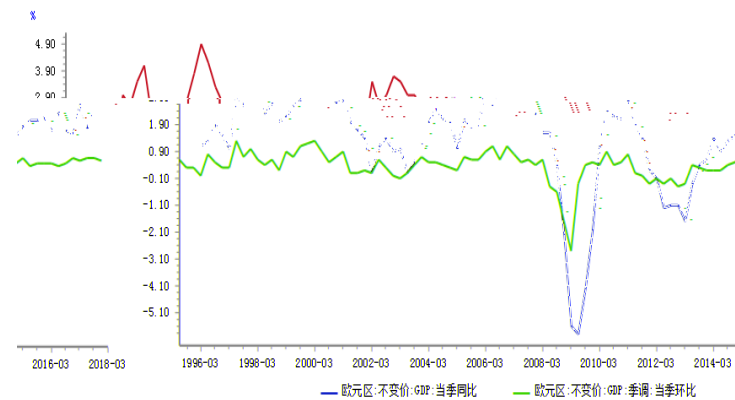


欧元区CPI&核心CPI



数据来源:同花顺iFIND

欧元区GDP

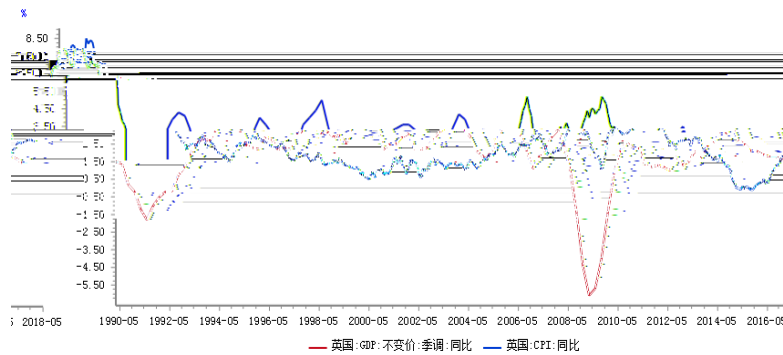


数据来源:同花顺iFIND

数据来源



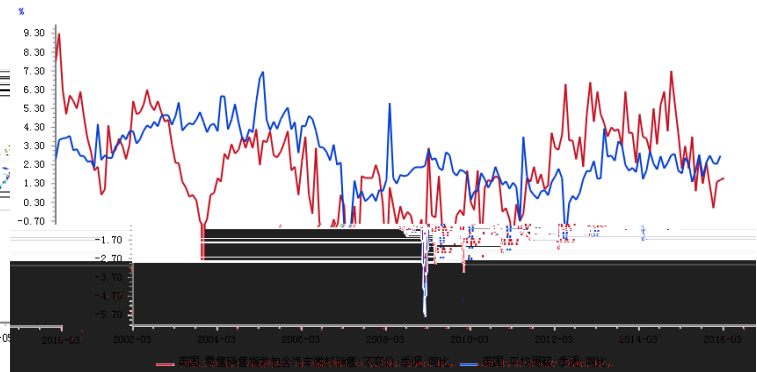
英国GDP及CPI



inD

数据来源: 同花顺iFinD

英国零售销售及平均周薪



数据来源: 同花顺iFinD





[Empty text box for content]



[Empty text box for content]



[Empty text box for content]



[Empty text box for content]



[Empty text box for content]



[Empty text box for content]





3





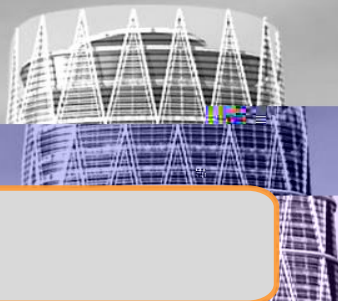
120







3



[Empty text box for content]



[Empty text box for content]



[Empty text box for content]



[Empty text box for content]



[Empty text box for content]



[Empty text box for content]

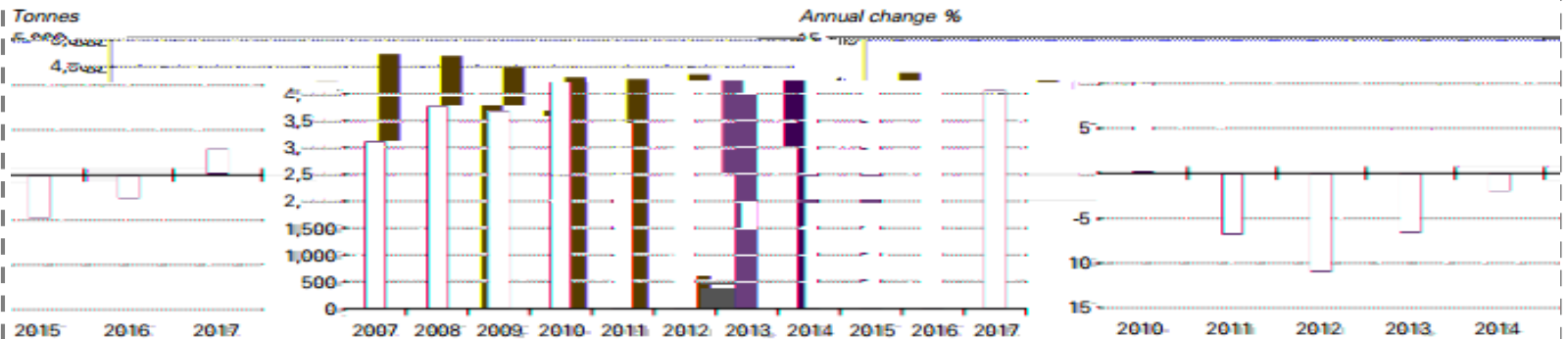


2017

2009

2017

2010



World Gold Council

Source: GFMS, Thomson Reuters, Metals Focus, World Gold Council

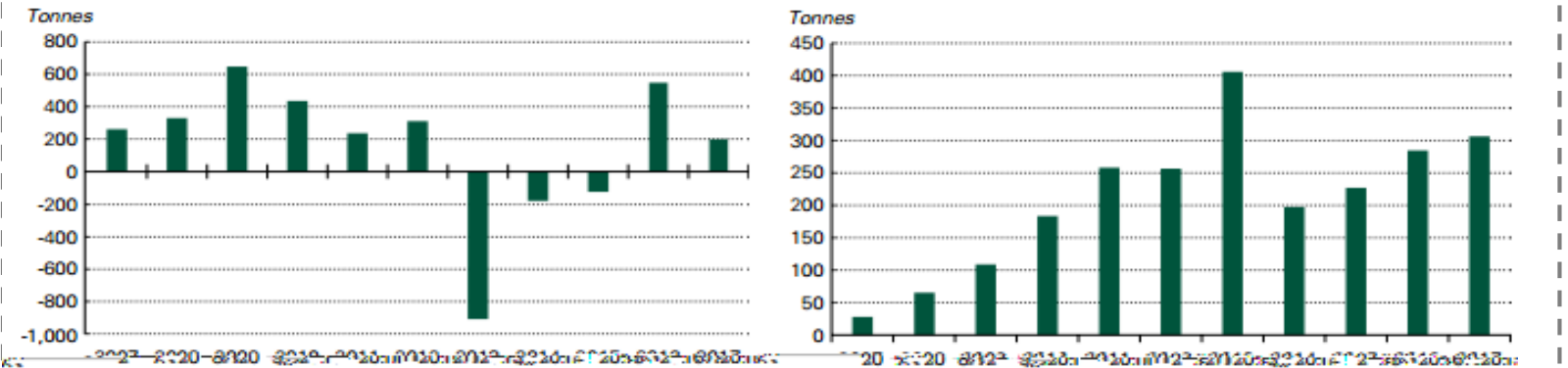
Source: GFMS, Thomson Reuters, Metals Focus, World Gold Council

2017

ETF

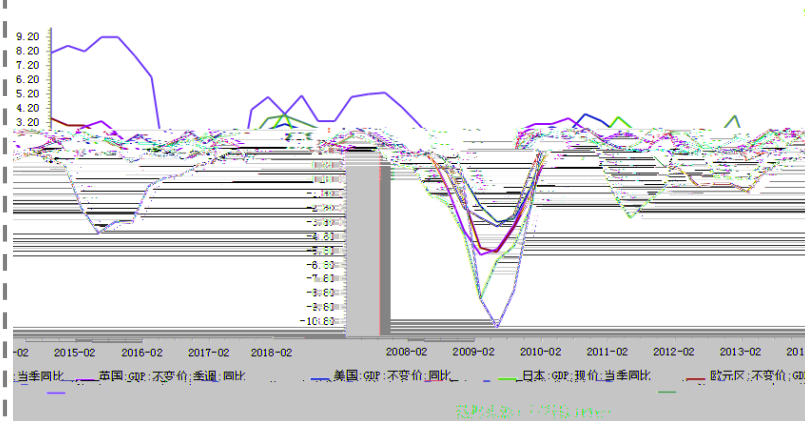
2016

2017

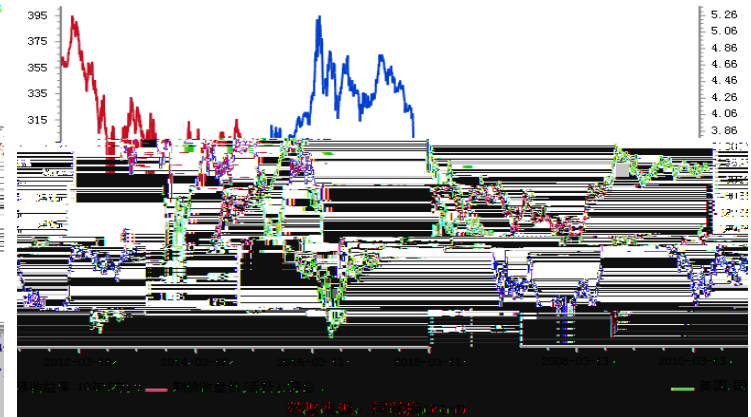




全球经济运行与增长



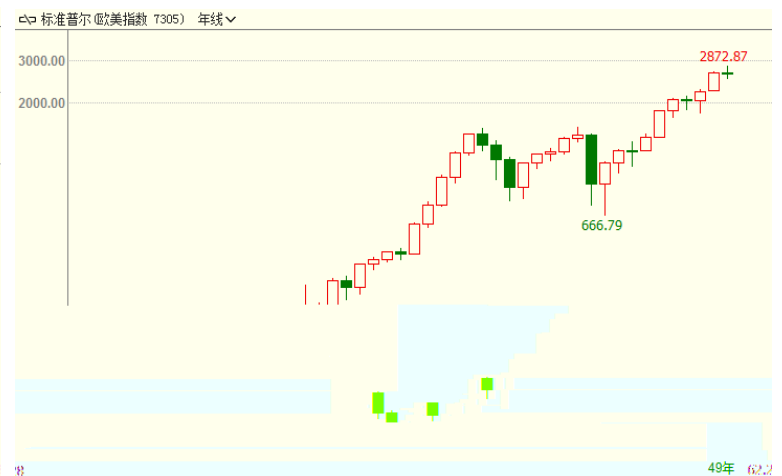
美国10年期国债收益率及金价走势



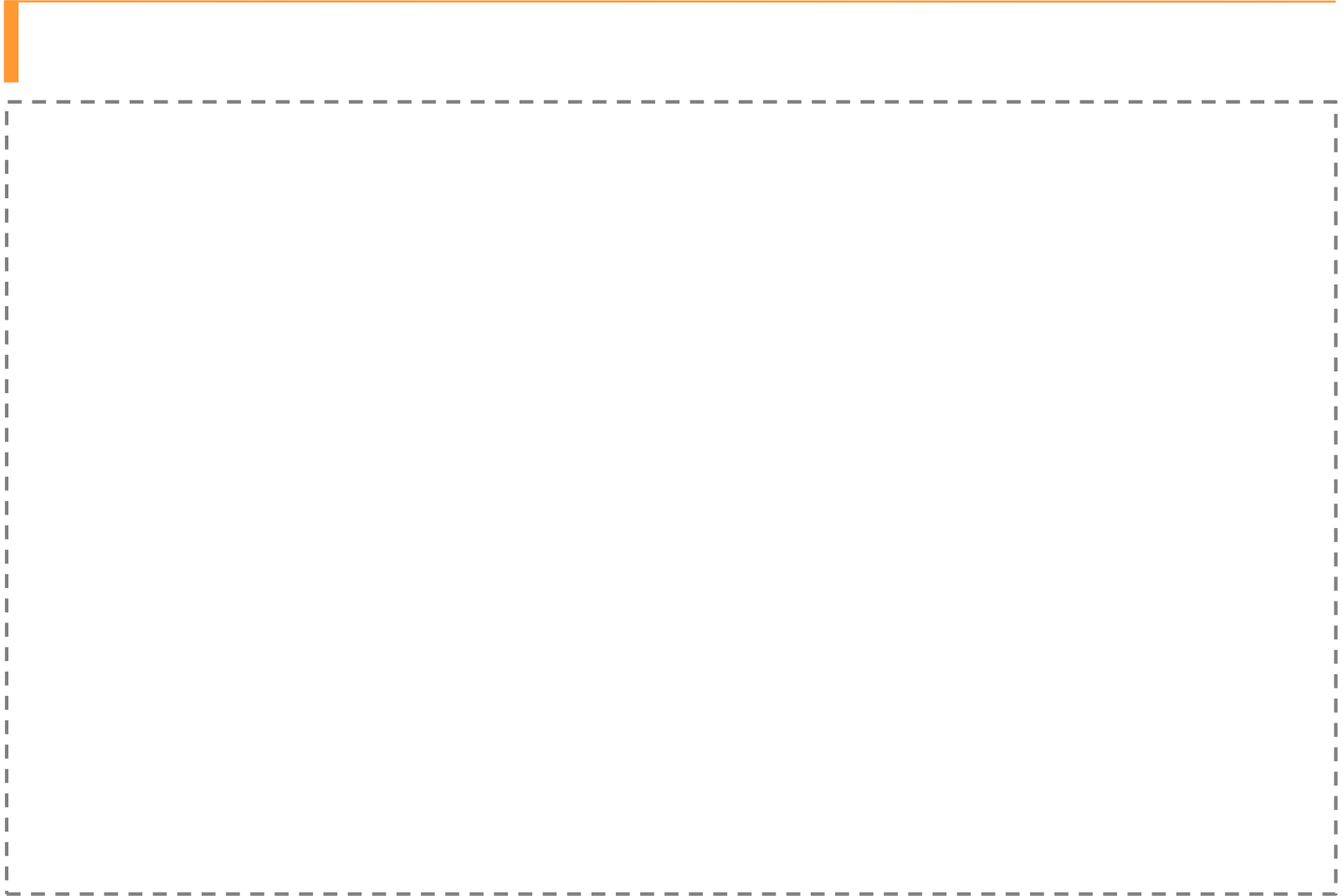


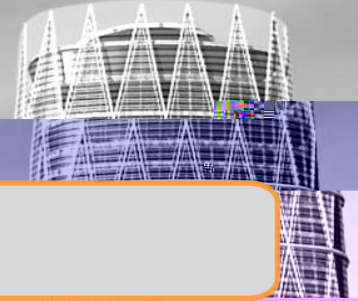
2017 12

40%









[Empty text box]



[Empty text box]



[Empty text box]



[Empty text box]



[Empty text box]

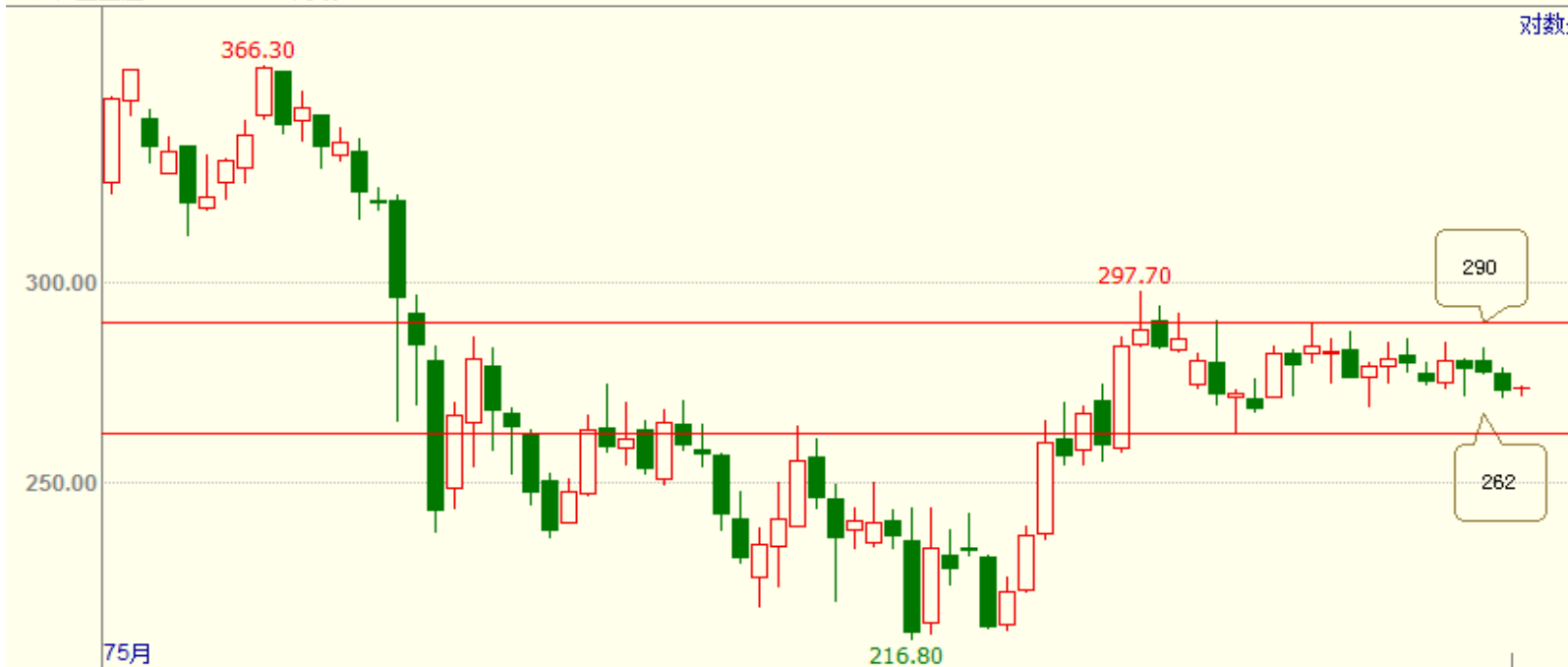


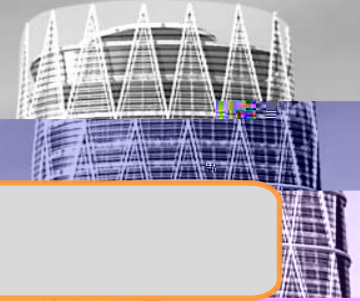
[Empty text box]



沪金主连(SHFE 2284) 月线

对数坐





[Empty text box]



[Empty text box]



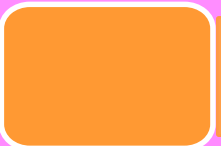
[Empty text box]



[Empty text box]



[Empty text box]

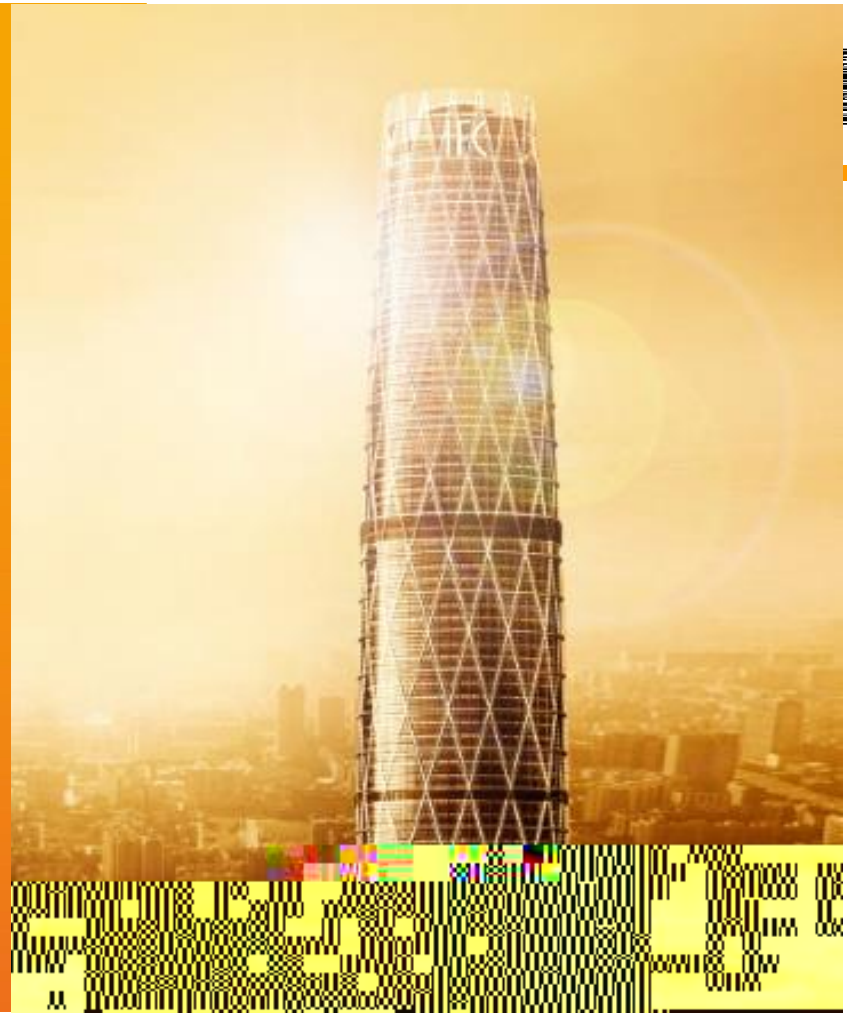


[Empty text box]





THANKS!



42. . . - 54

c . -

1

2

. - 0 2