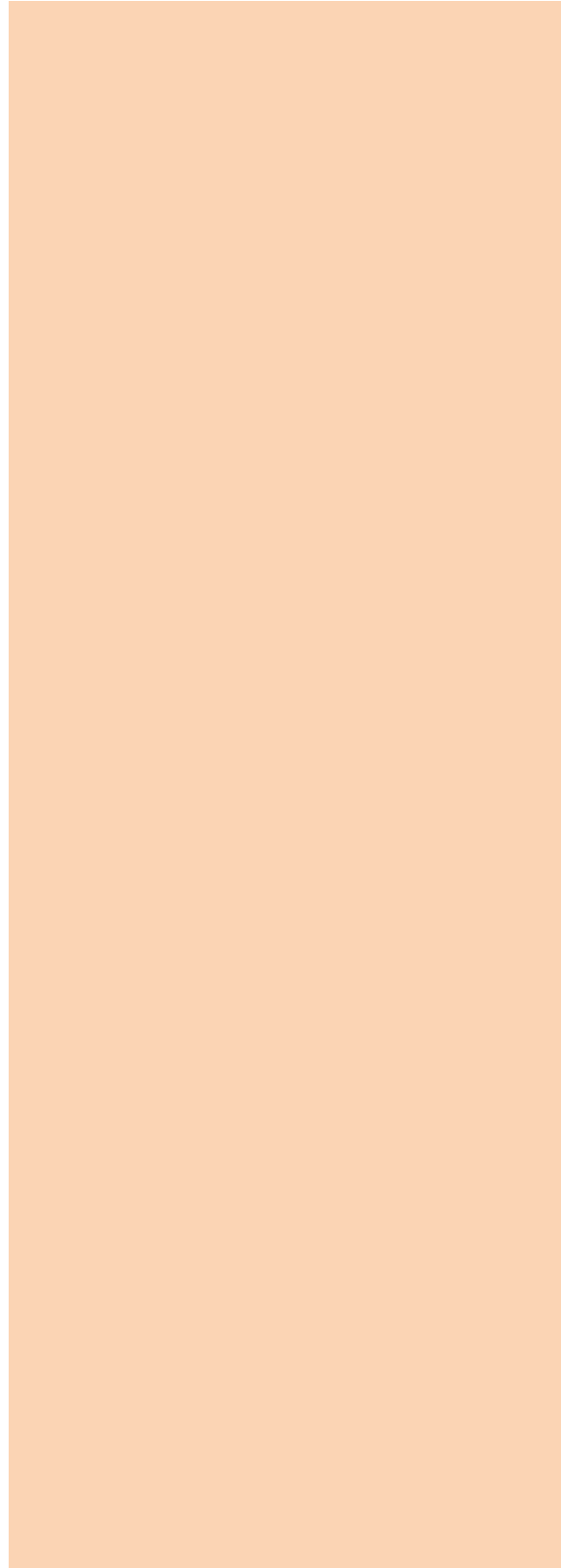




研究所

2018-12-15



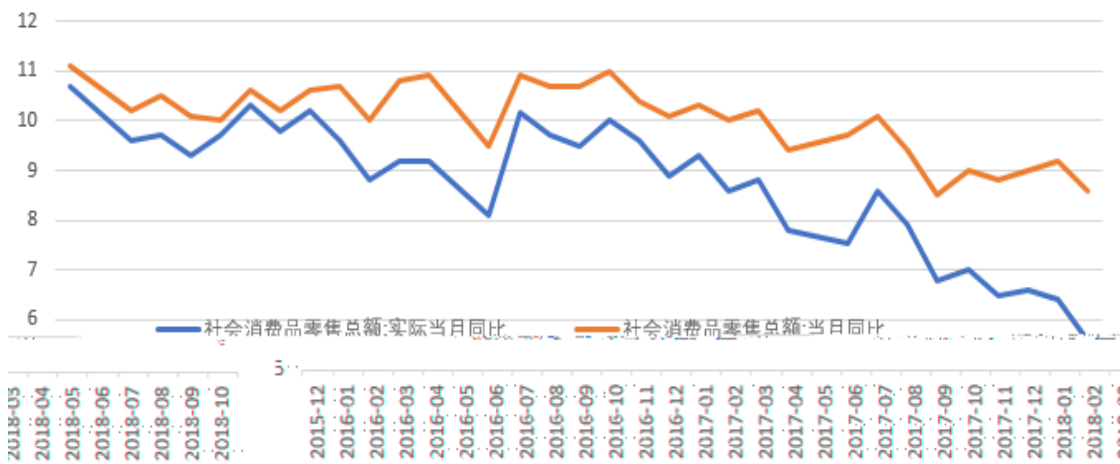












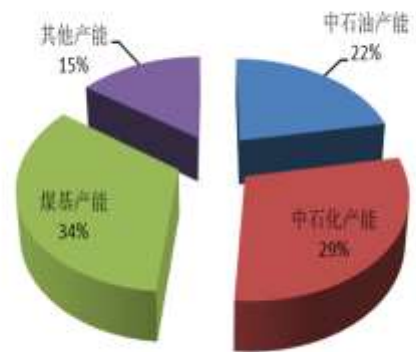


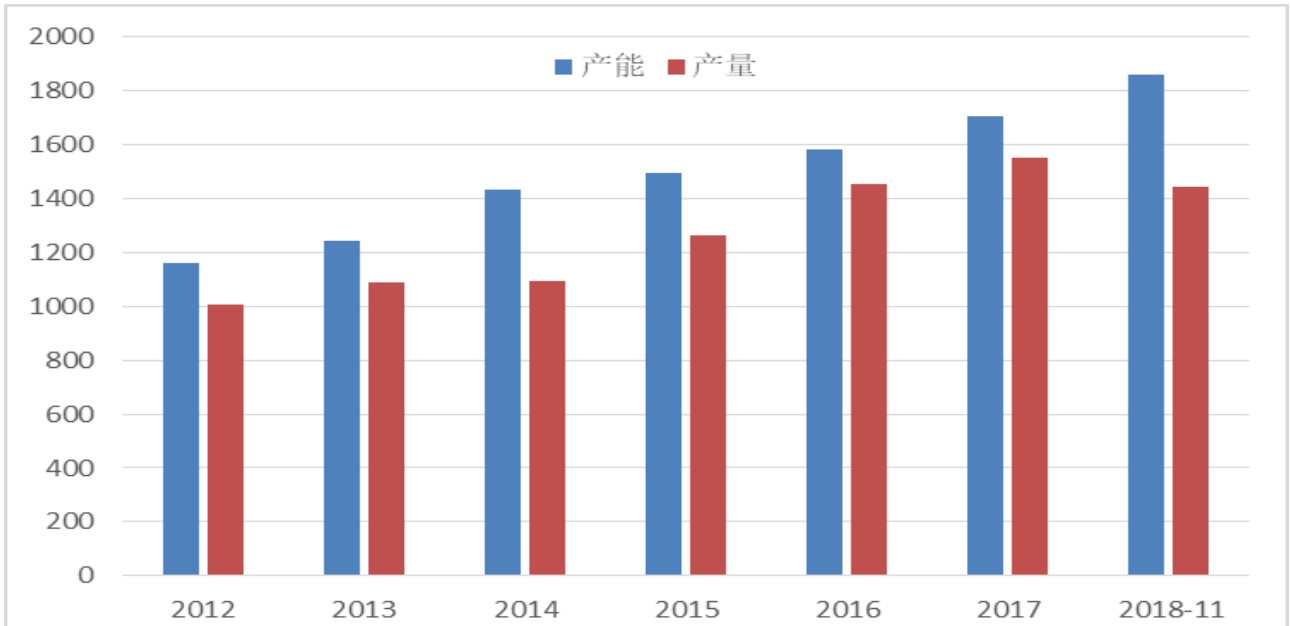


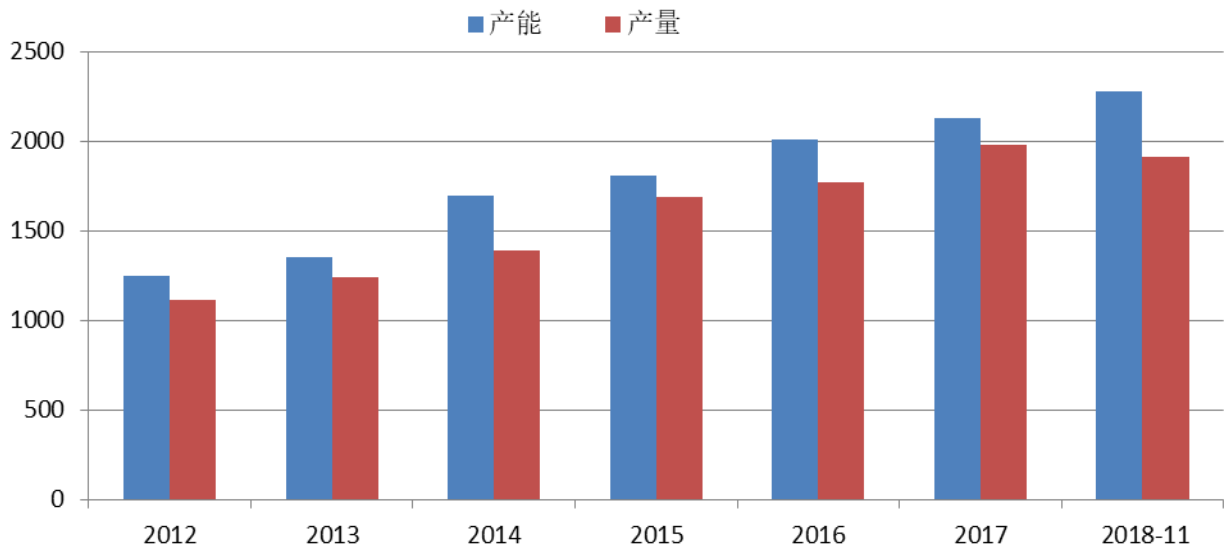
聚乙烯PE产能占比



聚丙烯PP产能占比

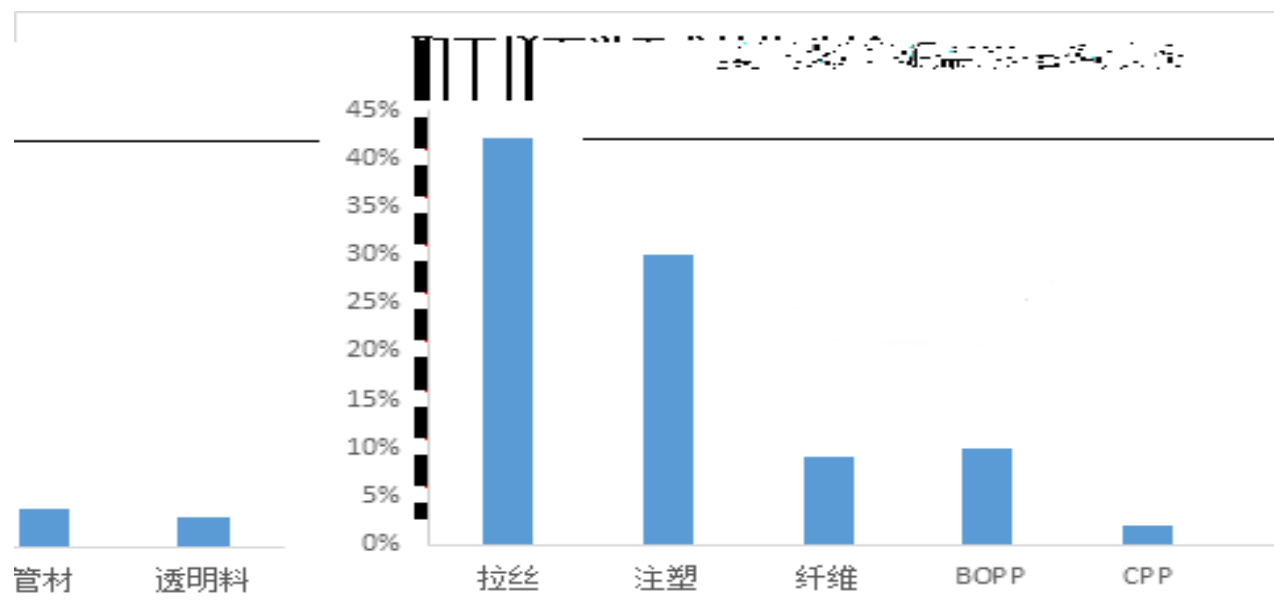


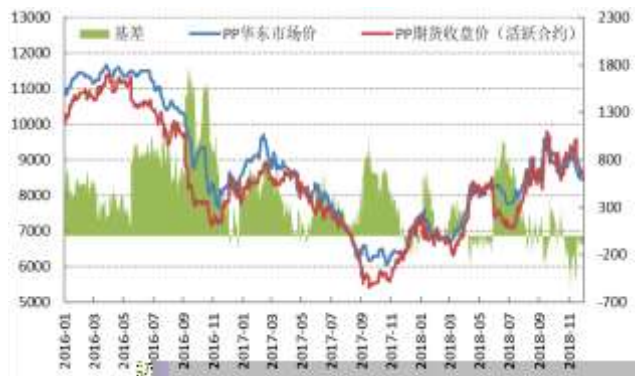
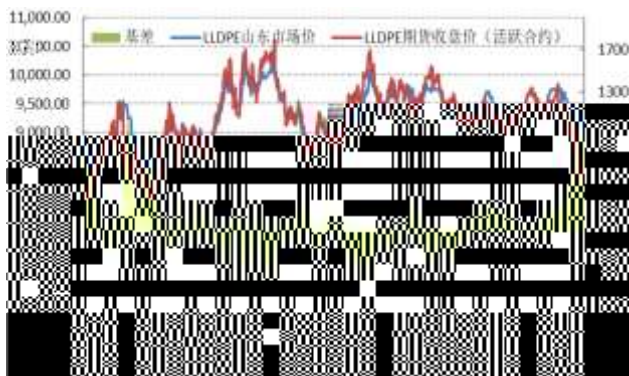


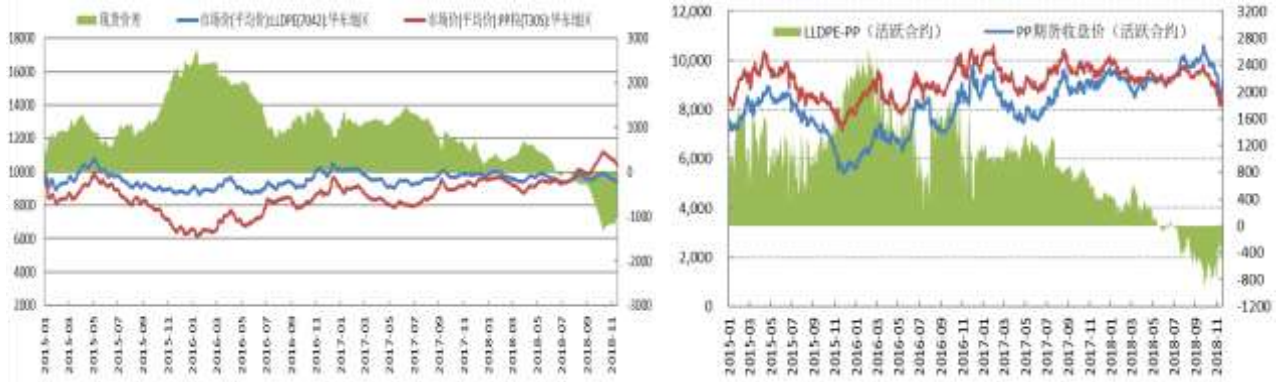














				2017	2018		807
		6.89%		2017	2018		
2018		1-10	1172.1		208.8		
	21.68%	20%	PE	3			
2018	1-10	393.1	3.2		0.83%		2017
		2017	2018				
					1-10		
31.5							
		2018					
		10		2019	1	1	

2019



