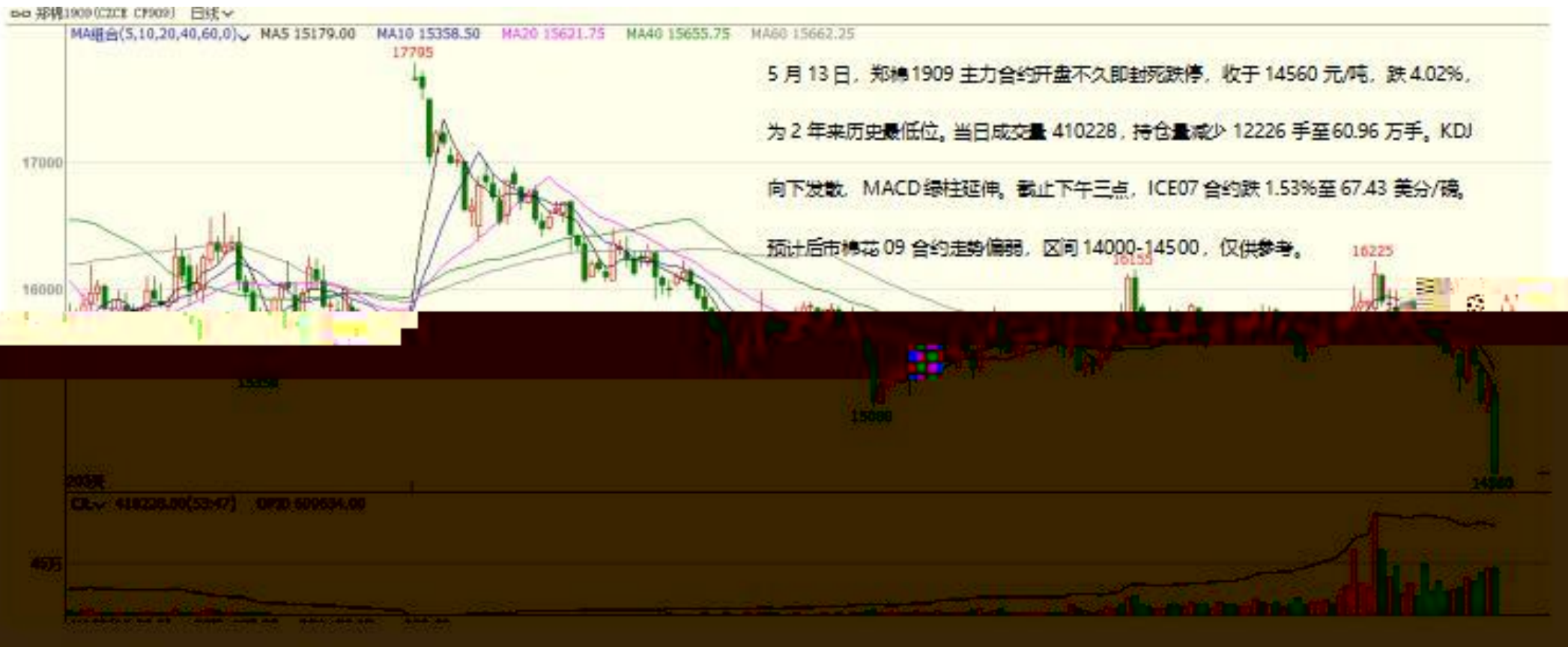


K



K



K

沪锌1906 (SHFE zn1906) 日线

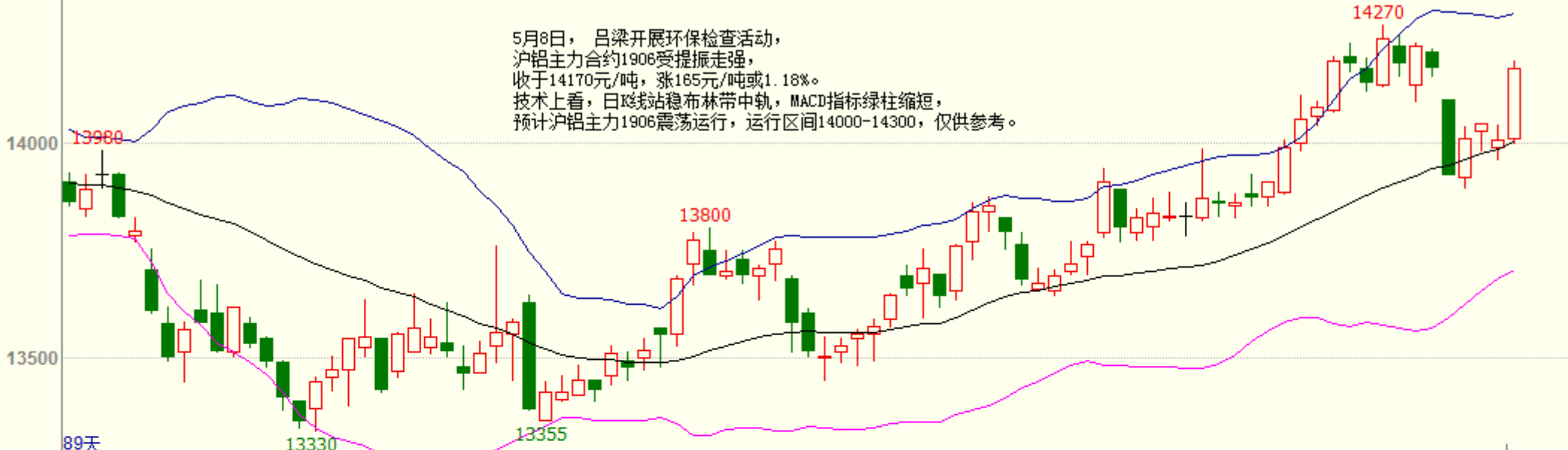


K

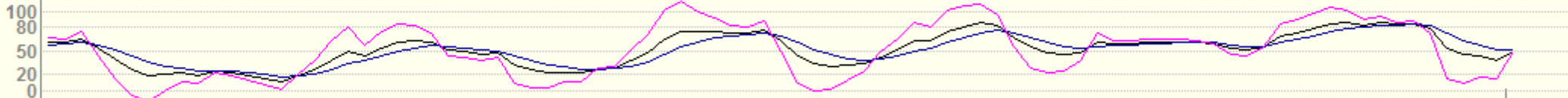
沪铝1906 (SHFE al1906) 日线

BOLL(26,26,2) MID 14001.15 TOP 14298.01 BOTTOM 13704.30

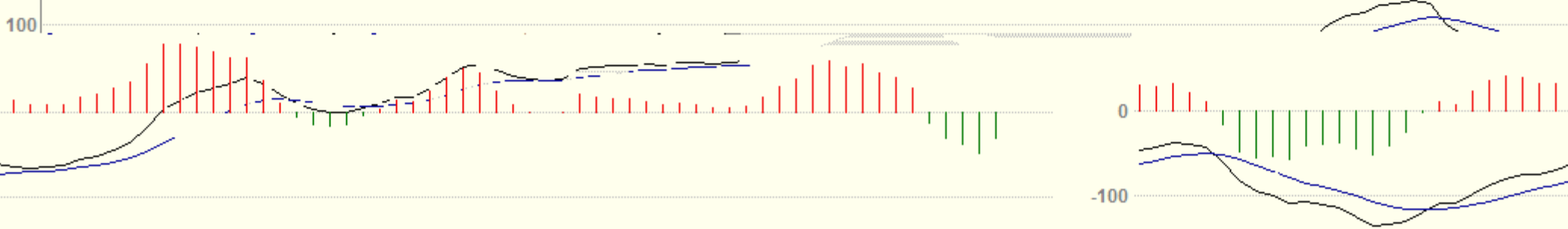
5月8日，吕梁开展环保检查活动，沪铝主力合约1906受提振走强，收于14170元/吨，涨165元/吨或1.18%。技术上，日线站稳布林带中轨，MACD指标绿柱缩短，预计沪铝主力1906震荡运行，运行区间14000-14300，仅供参考。



KDJ(9,3,3) K 50.39 D 50.77 J 49.63



MACD(12,26,9) DIFF 72.58 DEA 89.01 -32.87



019/02 2019/03 2019/04 2019/05 2019/01 2

K

沪铅1906 (SHFE pb1906) 日线

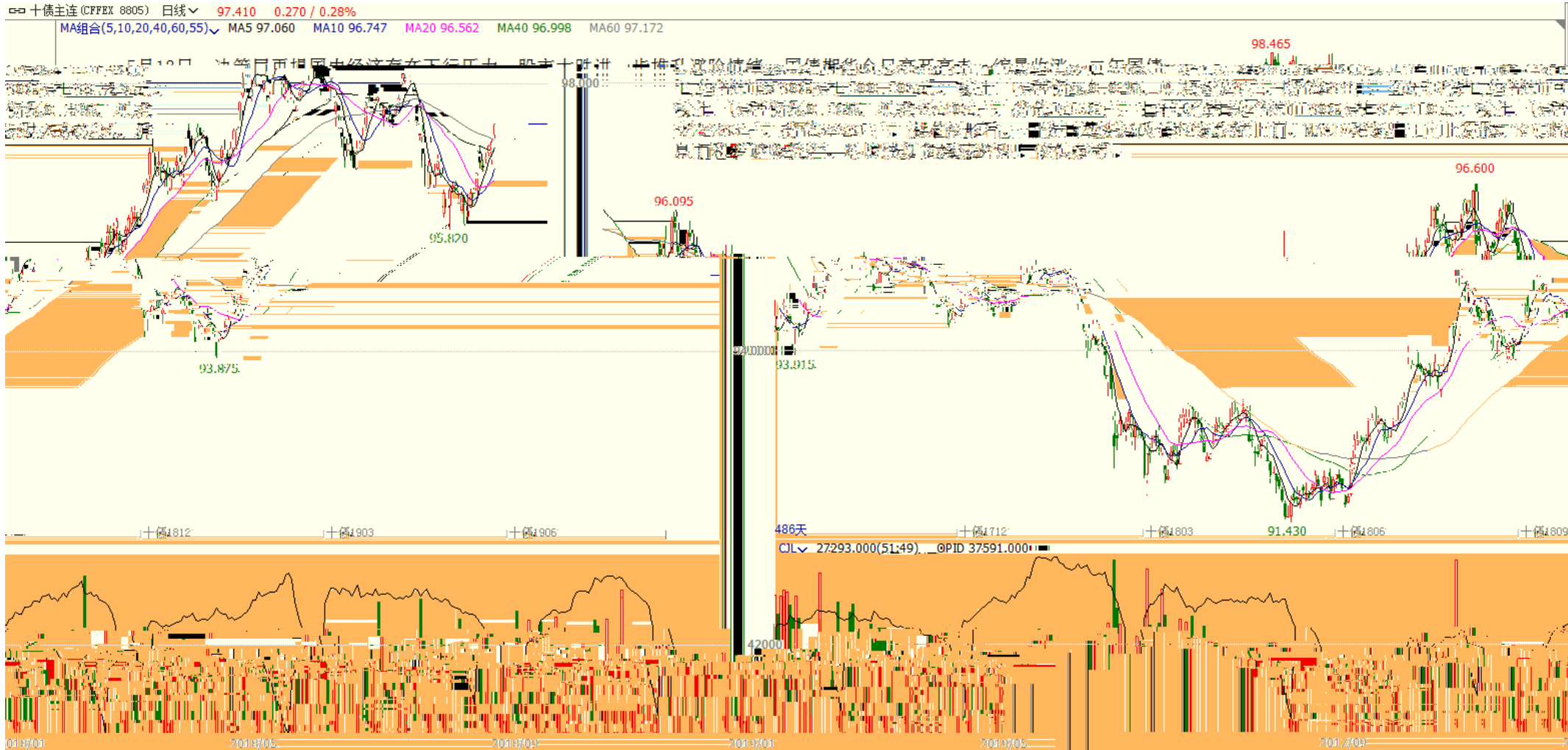


K

沪铜1906(SHFE cu1906) 日线



K



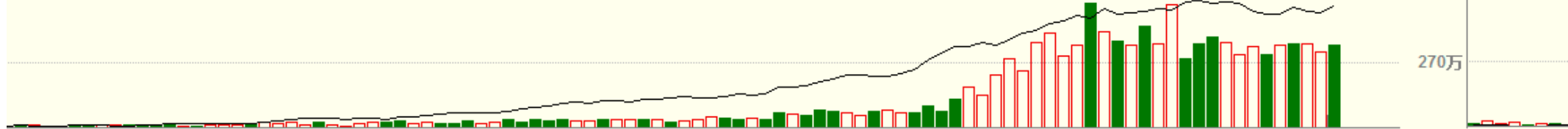
K

螺纹钢1910 (SHFE rb1910) 日线

MA组合(5,10,20,40,60,0) MA5 3734.40 MA10 3748.40 MA20 3759.90 MA40 3647.48 MA60 3601.95



10.00(48:52) OPID 2443248.00





K

焦煤1909(DCE jm1909) 日线

MA组合(5,10,20,40,60,0) MA5 1362.10 MA10 1357.15 MA20 1342.20 MA40 1335.00 MA60 1345.44



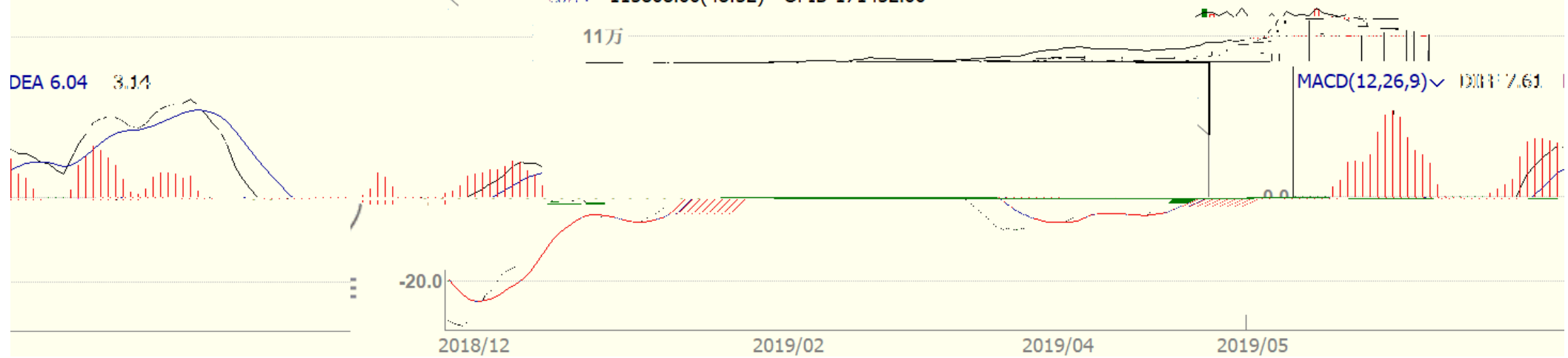
13日, 焦煤1905收1350.5, 较上一交易日下跌0.41%, 成交量增加, 持仓量增加。基本面方面, 澳煤通关低位, 蒙煤通关高位, 需求端焦企利润回升, 低硫主焦现货价格小幅上涨, 钢厂焦炭库存回升, 今日钢材成交价各地涨跌互现, 成交量减少。预计焦煤近期偏强运行。

115808.00(48:52) OPID 171452.00

11万

DEA 6.04 3.14

MACD(12,26,9) DIFF 7.61



--

"

"



020-22139858



020-22139813



020-22139817



020-22139824

5

1007-1012

510623