

豆粕1909(DCE m1909) 日线

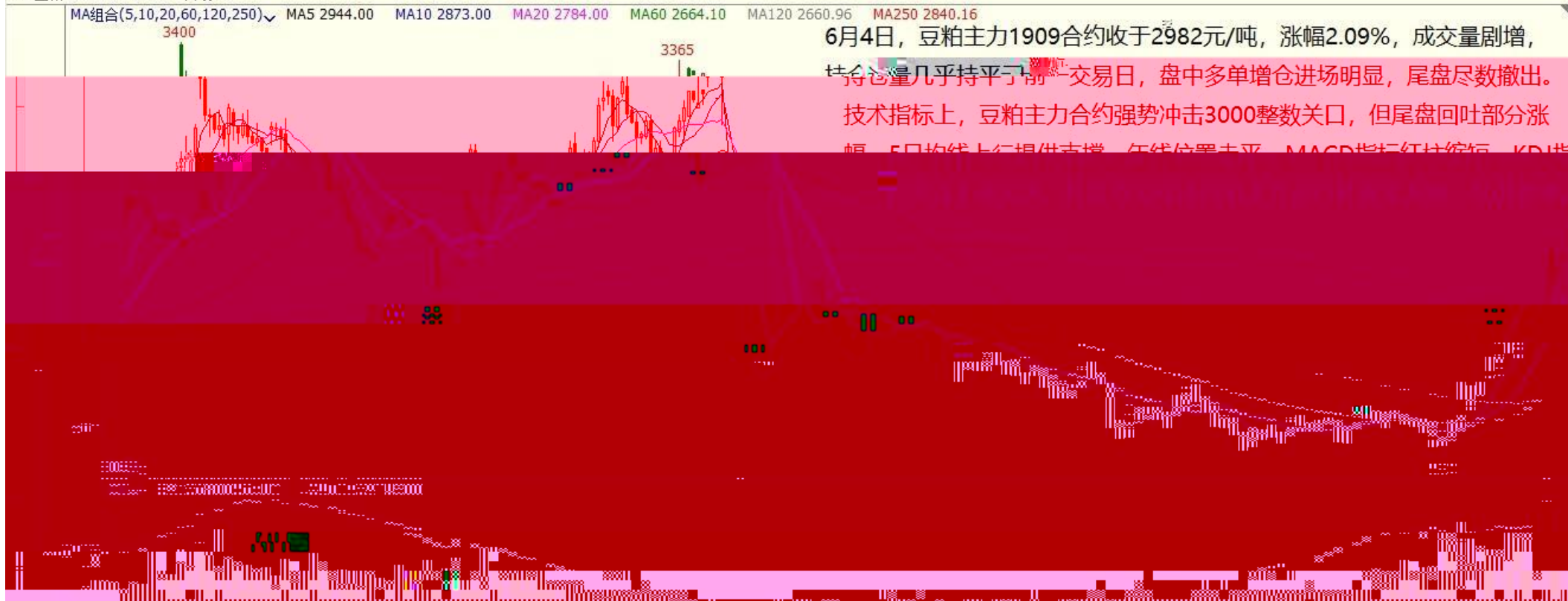
MA组合(5,10,20,60,120,250) MA5 2944.00 MA10 2873.00 MA20 2784.00 MA60 2664.10 MA120 2660.96 MA250 2840.16

3400

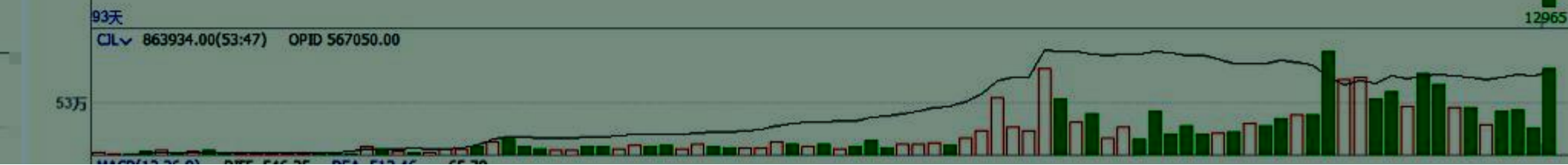
3365

6月4日，豆粕主力1909合约收于2982元/吨，涨幅2.09%，成交量剧增，持仓量几乎持平于前一交易日，盘中多单增仓进场明显，尾盘尽数撤出。

技术指标上，豆粕主力合约强势冲击3000整数关口，但尾盘回吐部分涨幅，5日均线上行提供支撑，均线位置未平，MACD指标红柱缩短，KDJ指

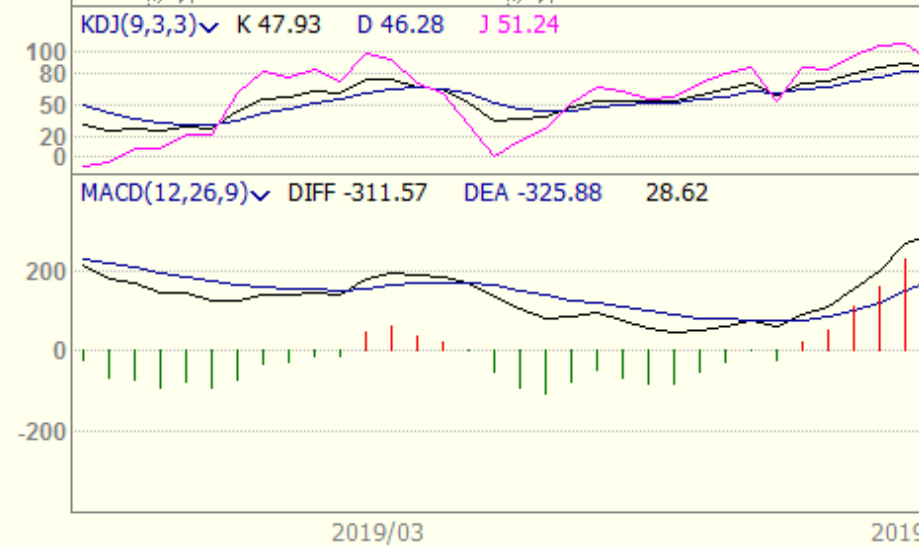
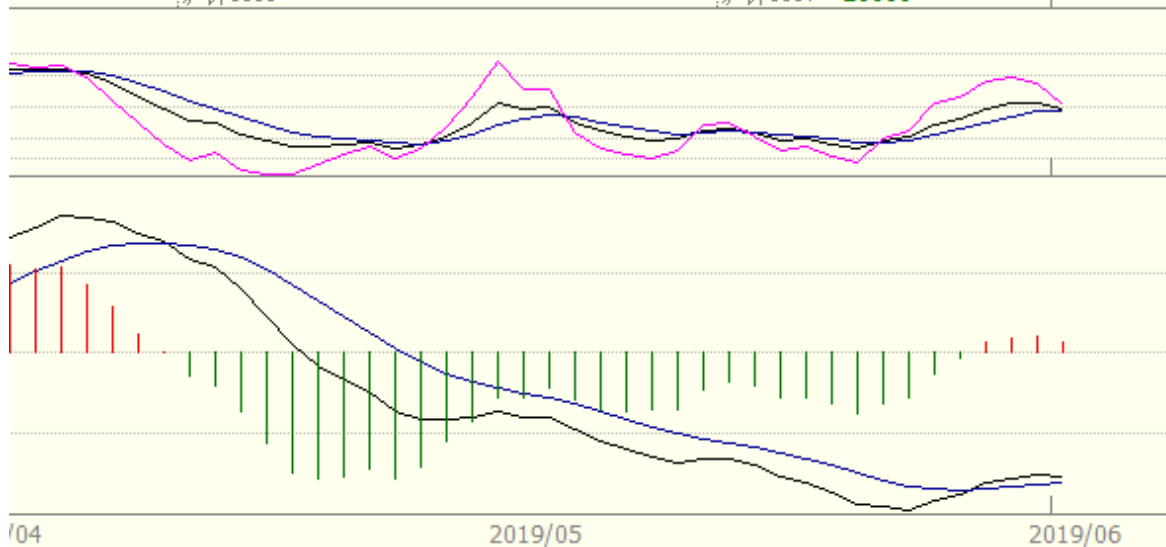
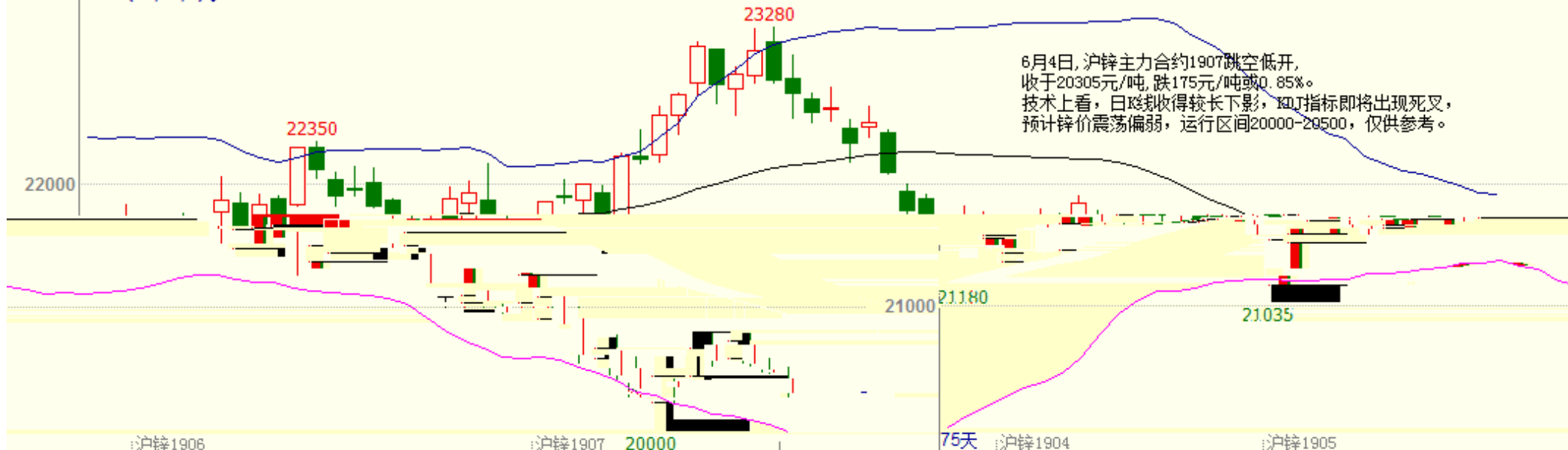


郑棉1909(CZCE CF909) 日线



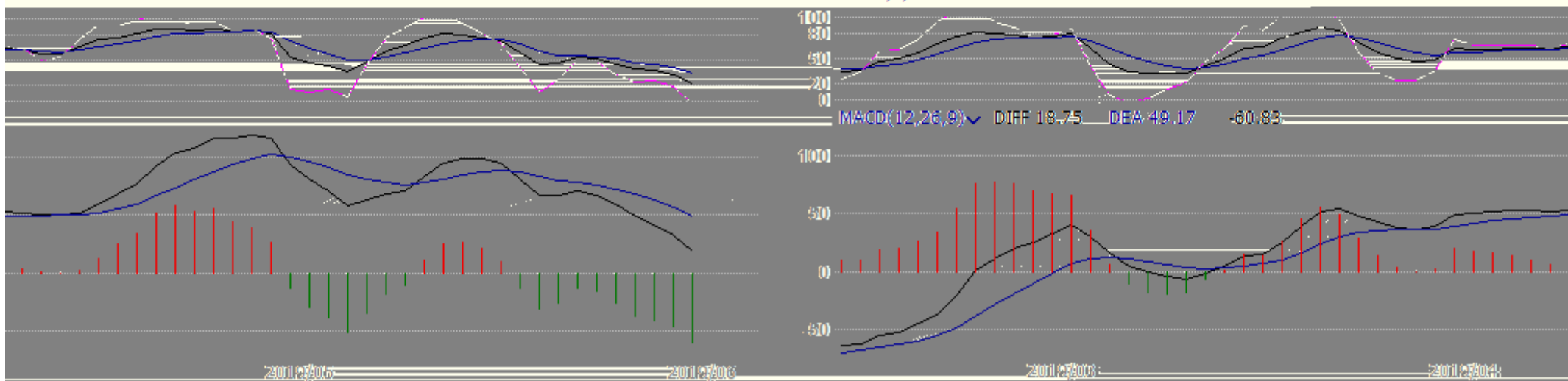
沪锌主连 (SHFE 2244) 日线

BOLL(26,26,2) MID 20948.65 TOP 21918.96 BOTTOM 19978.35



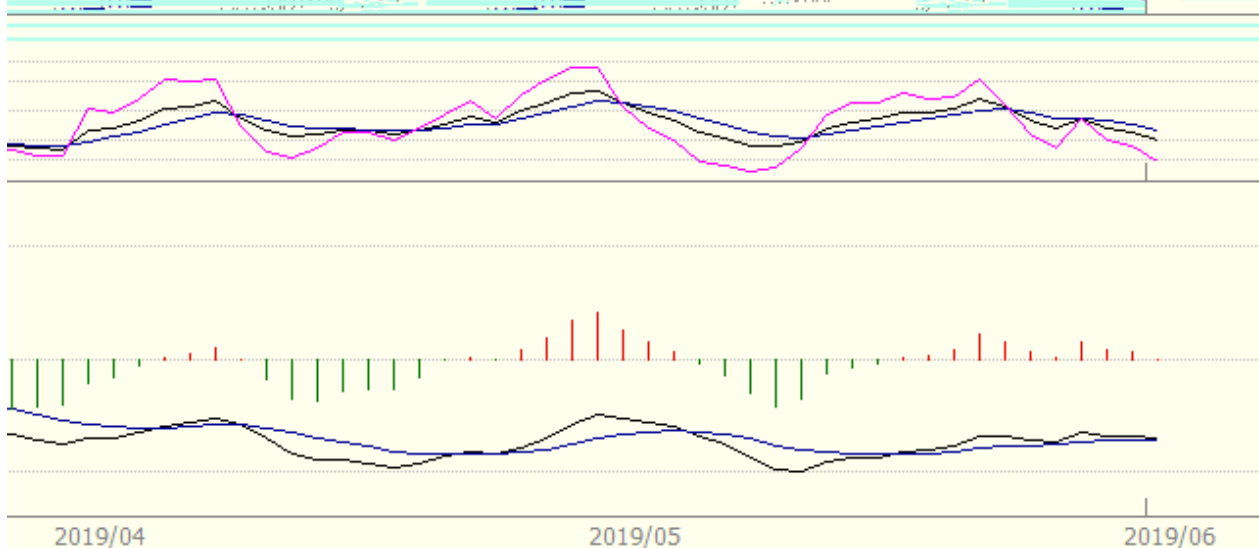
沪铝1907 (SHFE a11907) 日线

BOLL(26,26,2) MID 14172.69 TOP 14392.79 BOTTOM 13952.60



沪铅主连 (SHFE 2895) 日线

BOLL(26,26,2) MID 16185.58 TOP 16671.16 BOTTOM 15700.00



沪铜1907(SHFE cu1907) 日线

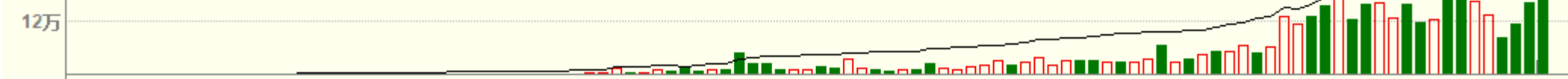
MA组合(5,10,20,40,60,0) MA5 46790.00 MA10 47028.00 MA20 47400.50 MA40 48374.25 MA60 48606.67



5-31, 近期沪铜小幅反弹后继续拐头向下获四连阴, 并跌破年初低点位置, 短期价格无明显支撑。日K均线系统呈空头排列, MACD指标偏空, 预计价格继续下探。仅参考。

109天

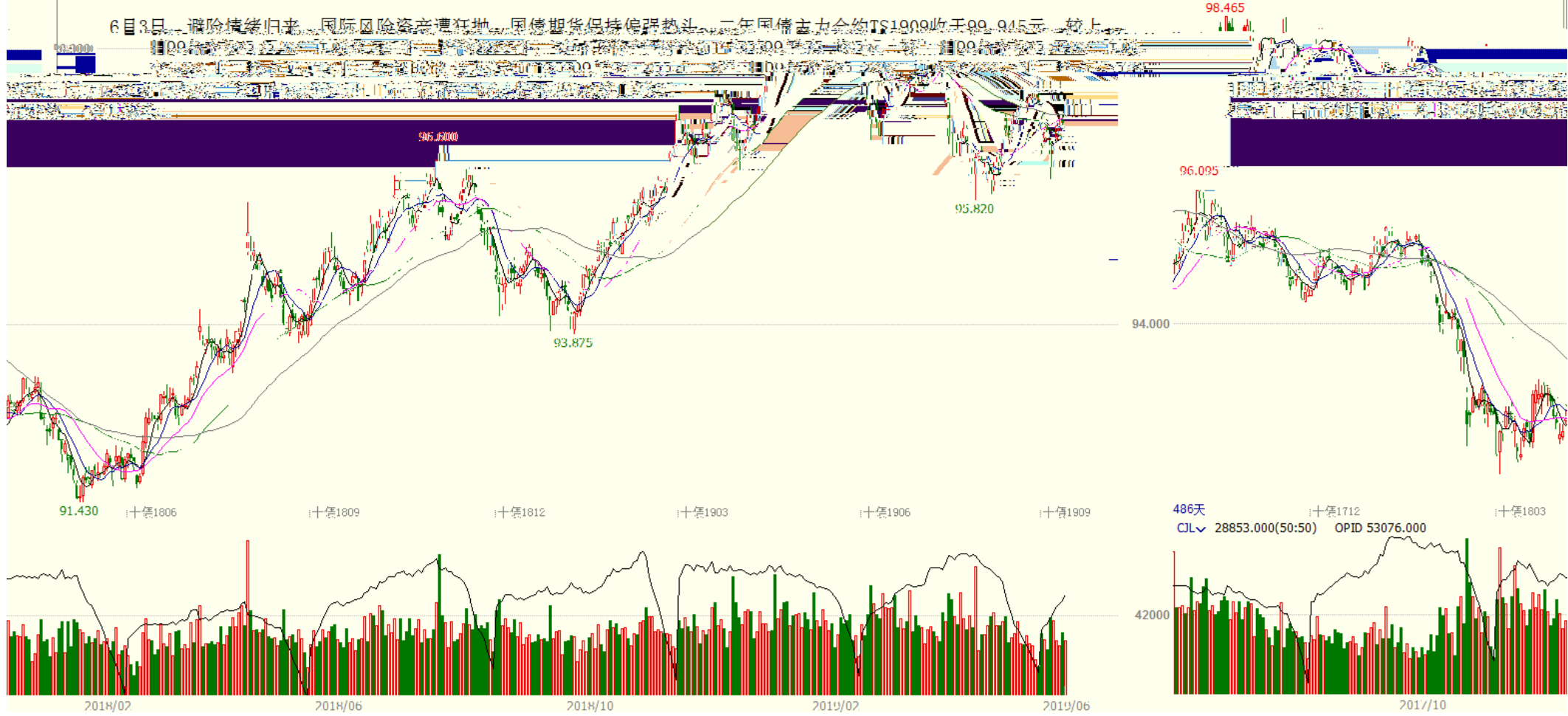
CJL 183872.00(49:51) OPID 236888.00



十债主连 (CFEEX 8805) 日线 97.200 0.270 / 0.28%

MA组合(5,10,20,40,60,55) MA5 96.885 MA10 96.807 MA20 97.010 MA40 96.731 MA60 97.049

6月3日 避险情绪归来 国际风险资产遭狂抛 国债期货保持偏强势头 二年国债主力合约TS1909收于99.945元 较上



焦煤1909(DCE jm1909) 日线





