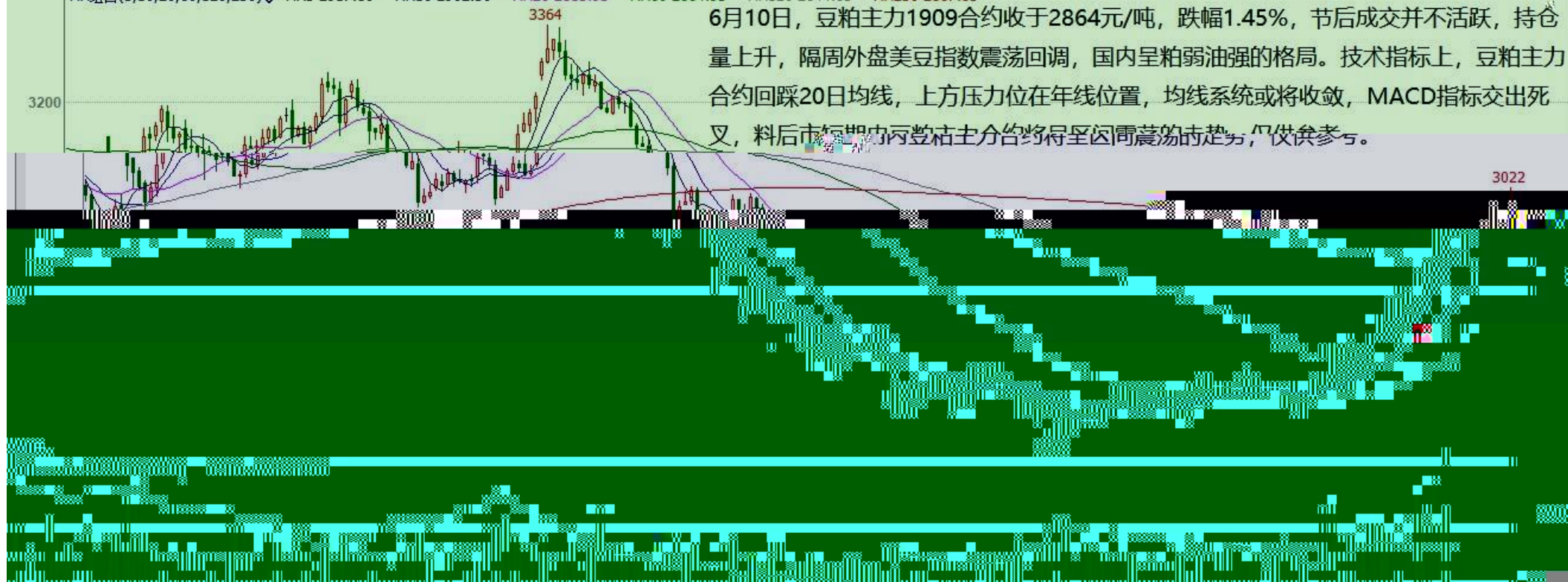


豆粕指数(DCE 1200) 日线

MA组合(5,10,20,60,120,250) MA5 2917.80 MA10 2902.50 MA20 2815.95 MA60 2664.93 MA120 2644.83 MA250 2867.83



3022

郑棉1909(CZCE CF909) 日线



区间12700-13200, 仅供参考。

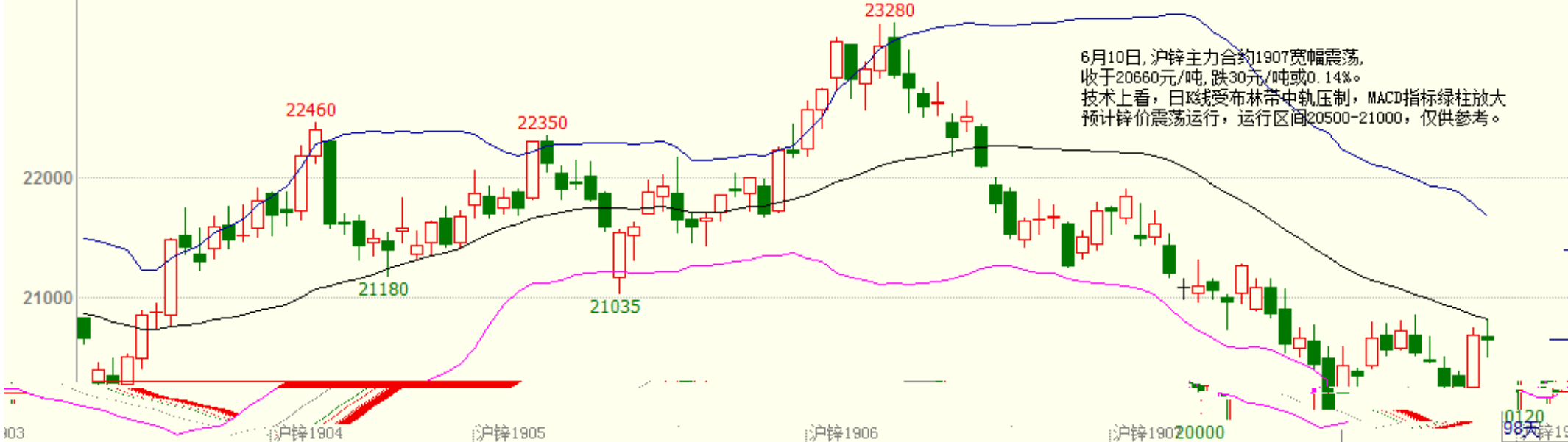
017

CLV 305202.99(5249) OPJ 559608.00

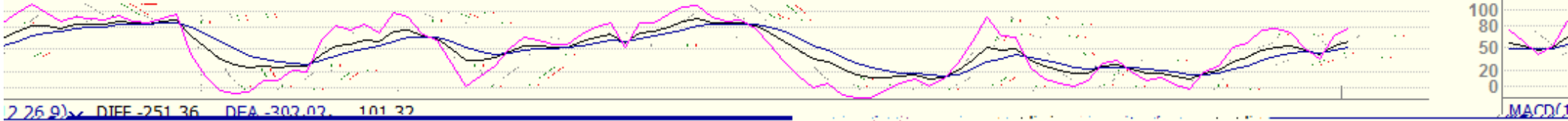


沪锌主连 (SHFE 2244) 日线

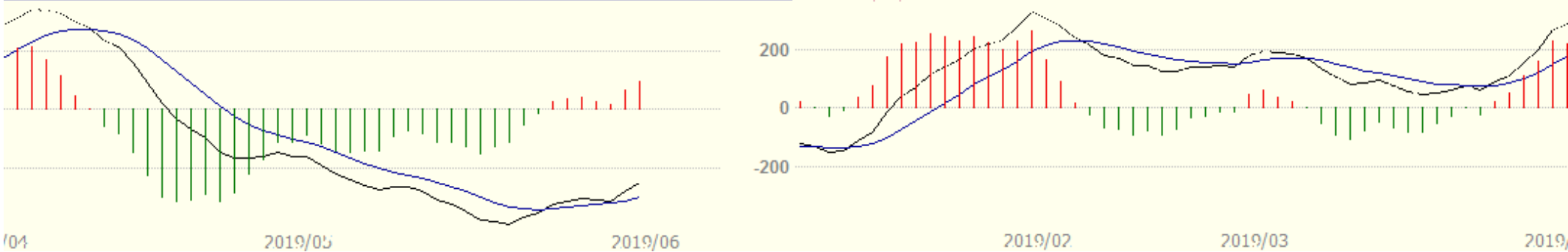
BOLL(26,26,2) MID 20820.77 TOP 21674.76 BOTTOM 19966.78



K 61.10 D 52.50 J 78.32



DIF -251.36 DEA -302.02 101.32



沪铝主连 (SHFE 2214) 日线

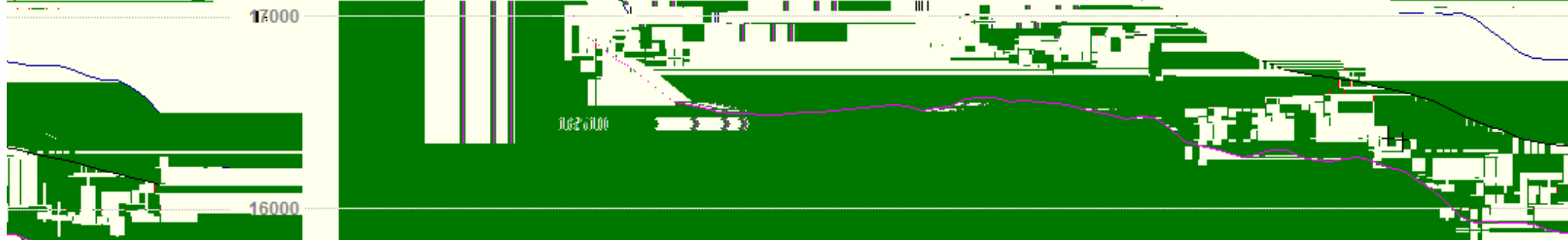
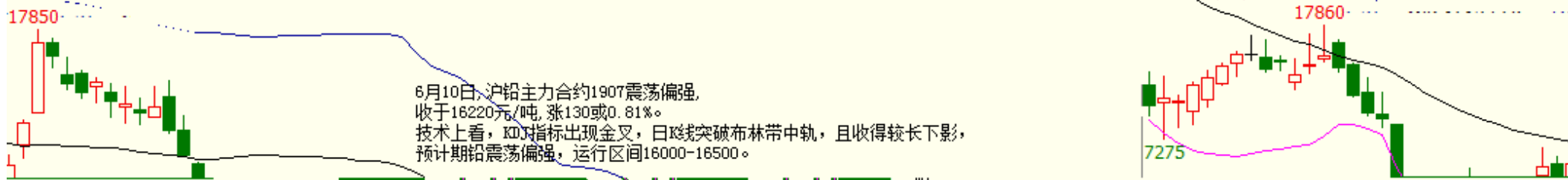
BOLL(26,26,2) MID 14150.00 TOP 14399.32 BOTTOM 13900.68

6月10日, 沪铝主力合约1907震荡运行, 收于13940元/吨, 跌10元/吨或0.07%。
技术上看, KDJ指标跌入超卖区, 但MACD指标绿柱放大, 预计沪铝主力1907震荡运行, 运行区间13900-14100, 仅供参考。

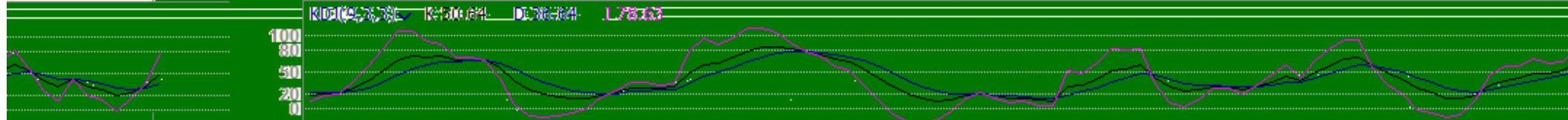


沪铅主连 (SHFE 2895) 日线

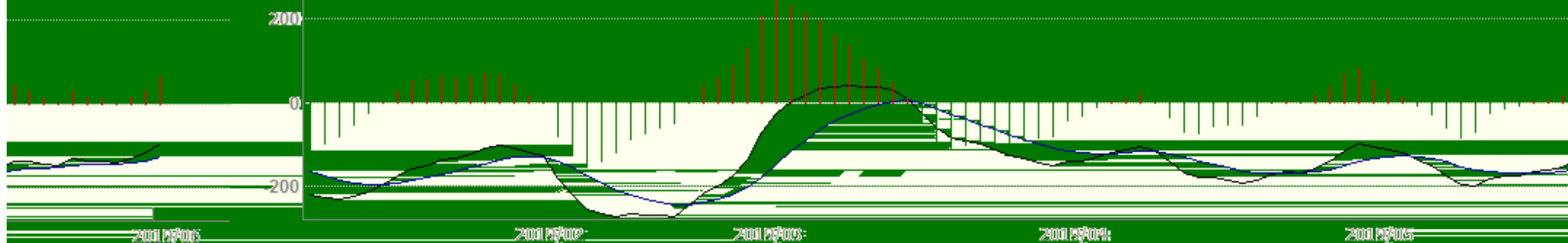
ROU (26,26,2) MID 16127.60 TOP 16407.10 BOTTOM 15759.10



98.5 沪铅1907 沪铅1909 沪铅1905 沪铅1903 157800 157800



MACD(12,26,9) DIFF: 93.98 DEA: 122.14 67.11



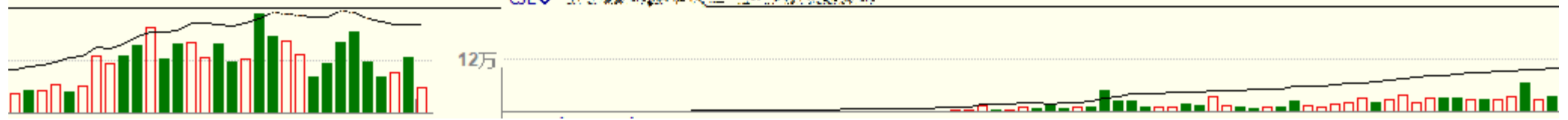
沪铜1907(SHFE cu1907) 日线

MA组合(5,10,20,40,60,0) MA5 46230.00 MA10 46510.00 MA20 46986.50 MA40 47955.50 MA60 48364.00



6-10, 日内沪铜主力震荡整理, 暂获5日均线支撑, MACD指标绿柱实体持续

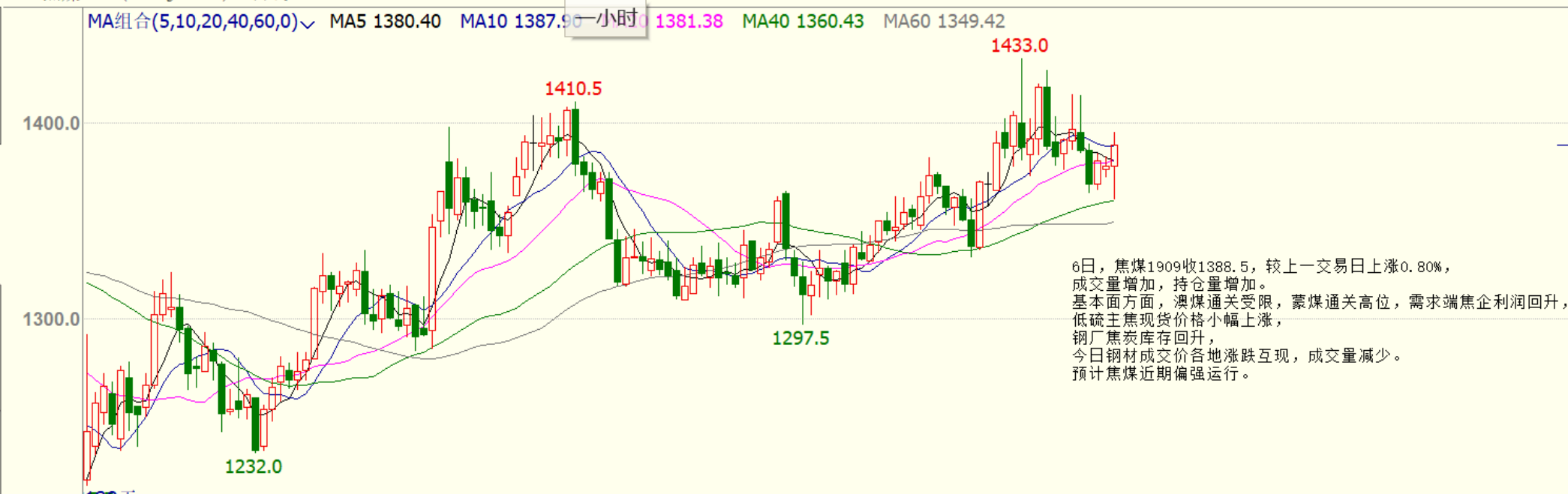
分析: DIFF及DEA下行趋势有所放缓, 短期铜价涨势暂缓, 但日线均线系统最



十债主连 (CFEX 8805) 日线 97.410 -0.060 / -0.06%
MA组合(5,10,20,40,60,55) MA5 97.388 MA10 97.046 MA20 97.102 MA40 96.815 MA60 97.038



焦煤1909(DCE jm1909) 日线



6日,焦煤1909收1388.5,较上一交易日上涨0.80%,成交量增加,持仓量增加。基本面方面,澳煤通关受限,蒙煤通关高位,需求端焦企利润回升,低硫主焦煤现货价格小幅上涨,钢厂焦炭库存回升,今日钢材成交价各地涨跌互现,成交量减少。预计焦煤近期偏强运行。

成交量

CJL 247600.00(50:50) OPID 218246.00

