

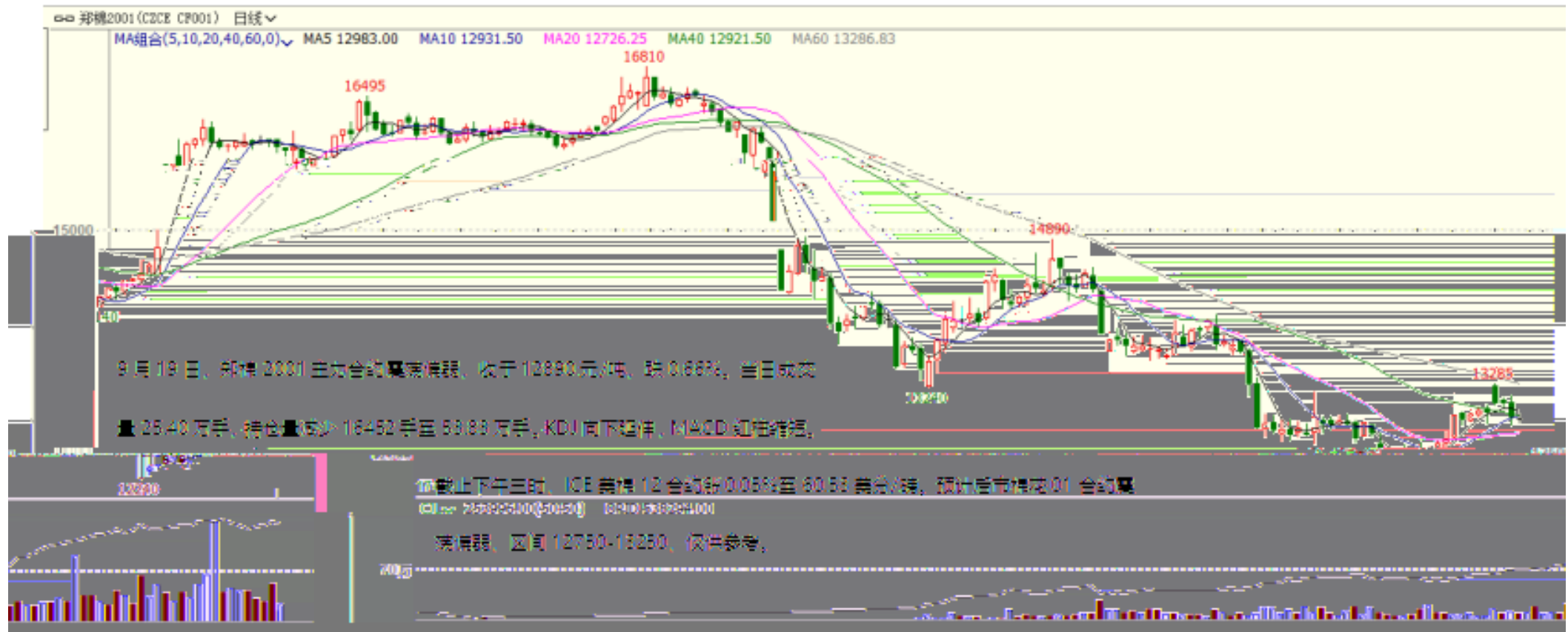
K

豆粕2001(DCE m2001) 日线

MA5 2852.20 MA10 2901.60 MA20 2918.00 MA60 2883.73 MA250 2806.32



K



K

沪锌主连 (SHFE 2244) 日线

BOLL(26,26,2) MID 18836.15 TOP 19354.57 BOTTOM 18317.74

20910

9月19日, 沪锌主力合约1911跳空低开, 收于18950元/吨, 跌175元/吨或0.92%。技术上, MACD指标红柱缩短, KDJ指标空头排列, 预计沪锌承压运行, 运行区间18900-19300, 关注价格核时溢价的影响, 仅供参考。

19795

19305

18930

沪锌1805

沪锌1910

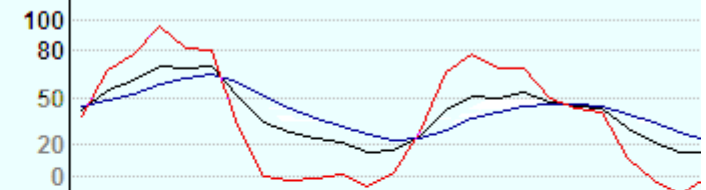
沪锌1911

沪锌1911

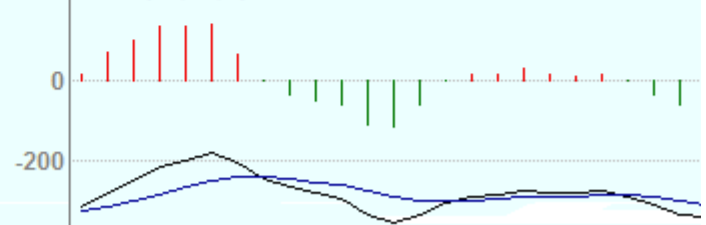
海天

沪锌1905

KDJ(9,3,3) K: 42.60 D: 66.65 J: 9.51



MACD(12,26,9) DIFF 52.92 DEA 17.02 71.79



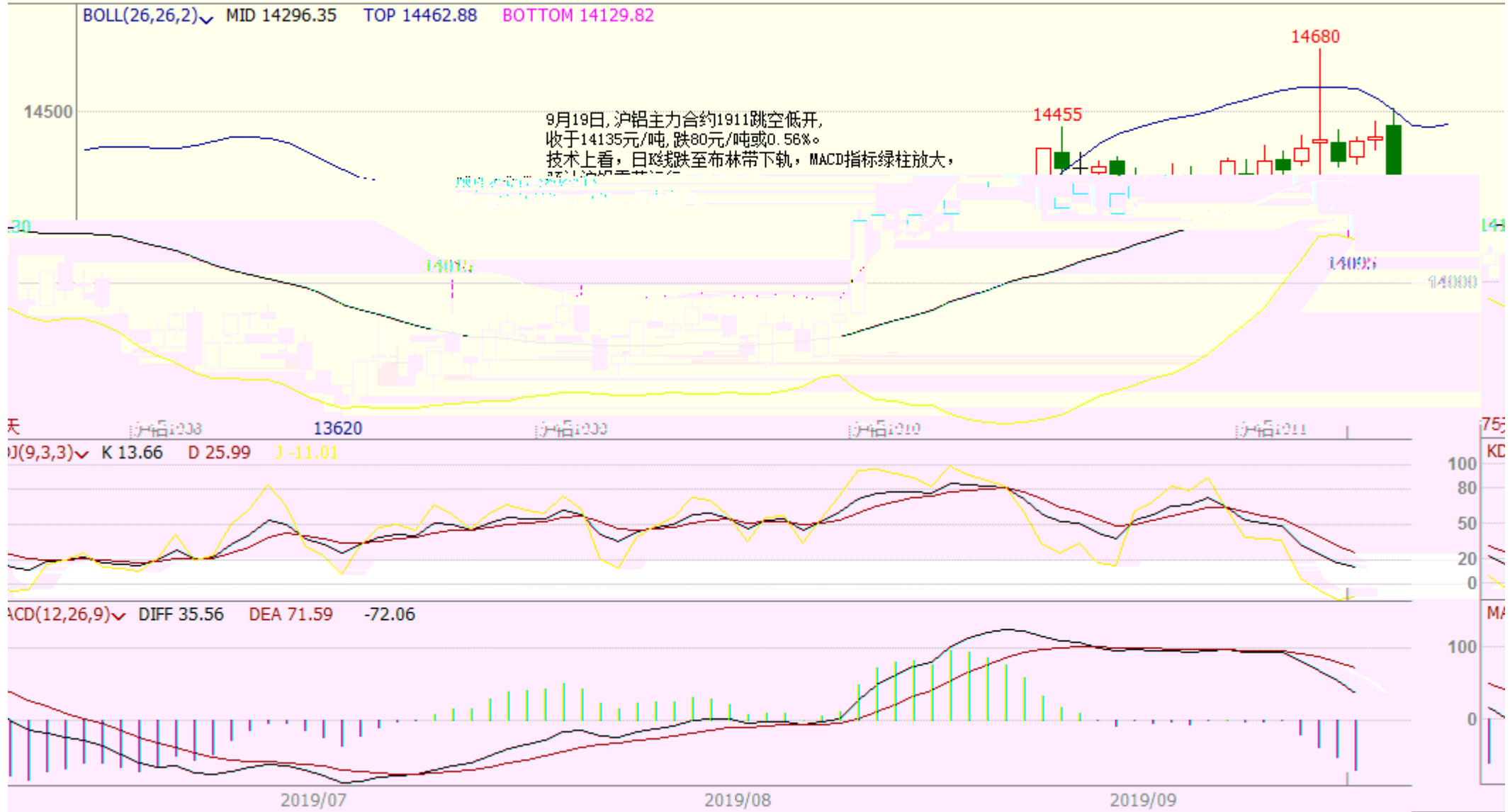
2019/08

2019/09

2019/07

K

沪铝主连 (SHFE 2214) 日线





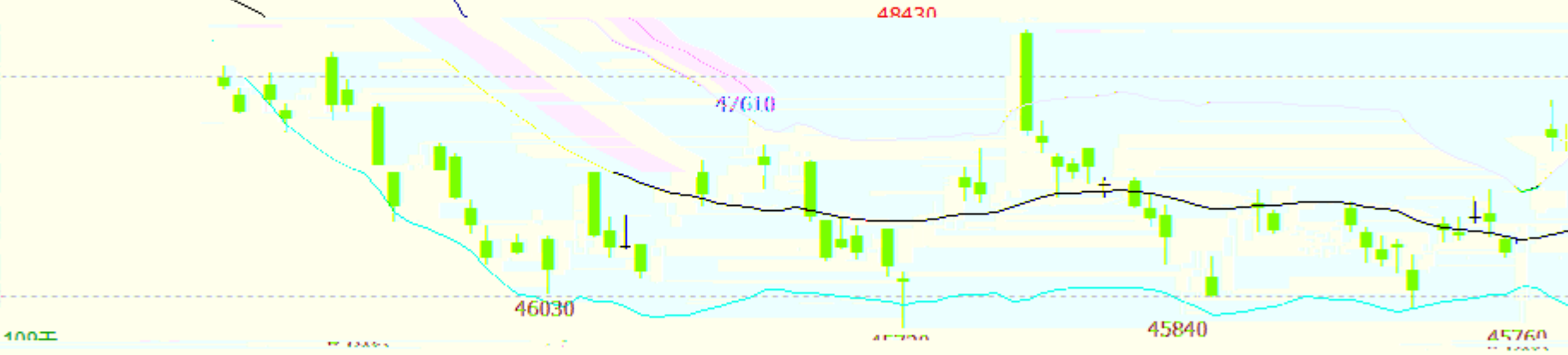
K

沪铜1911(SHFE cu1911) 日线

BOLL(26,26,2) MID 46832.69 TOP 47710.01 BOTTOM 45955.38



9-19, 今日沪铜主力继续收阴, MACD红柱实体持续收窄, KDJ指标形成死叉后向下跌散, 短期技术面偏空, 铜价或向下试探布林中轨46800元附近支撑。仅供参考。



MV(1,0,20) 110658.00(49:51) 101241.44 749.338



0

0

--

"

"



020-22139858



020-22139813



020-22139817



020-22139824

5

1007-1012

510623