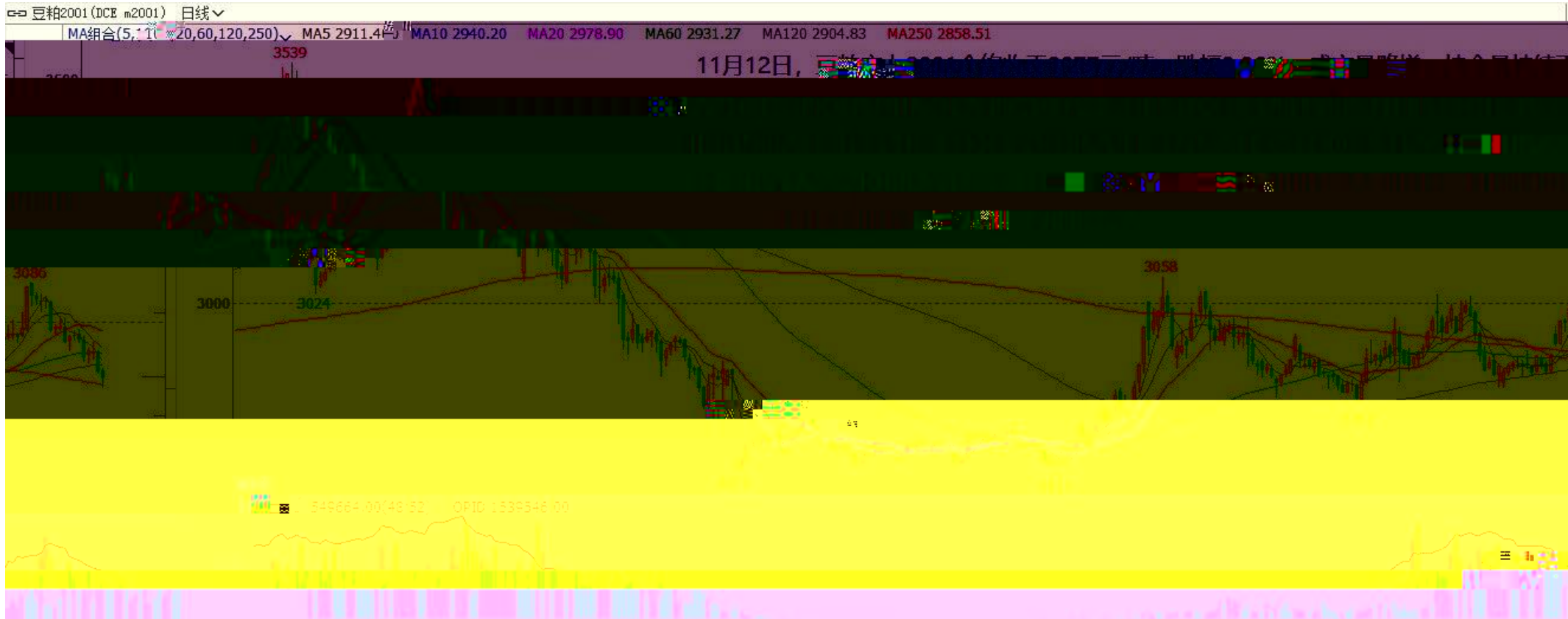


K



K



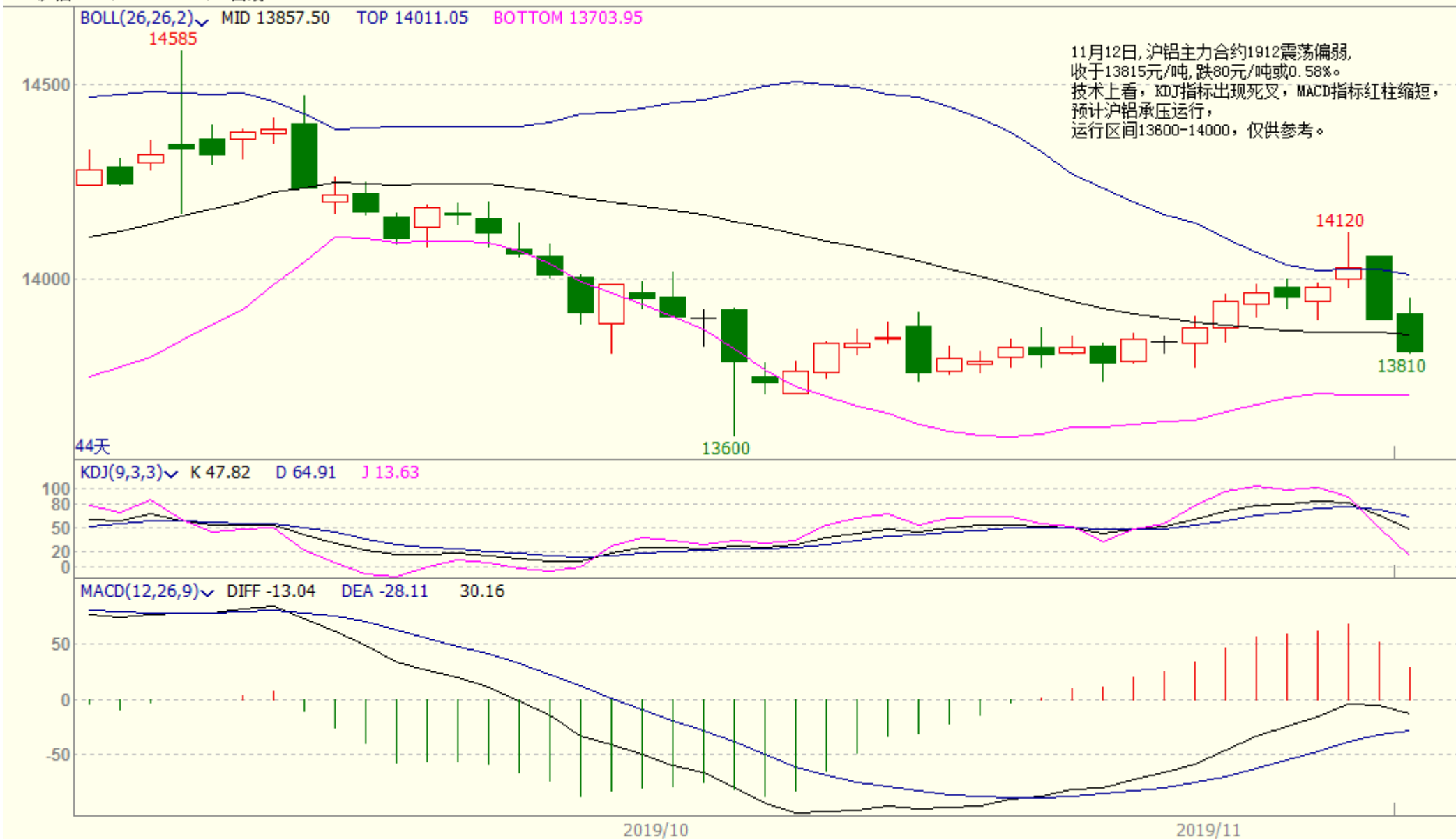
K

沪锌1912 (SHFE zn1912) 日线



K

沪铝1912(SHFE a11912) 日线



K

沪铅1912 (SHFE pb1912) 日线

BOLL(26,26,2) MID 16615.96 TOP 17240.55 BOTTOM 15991.37

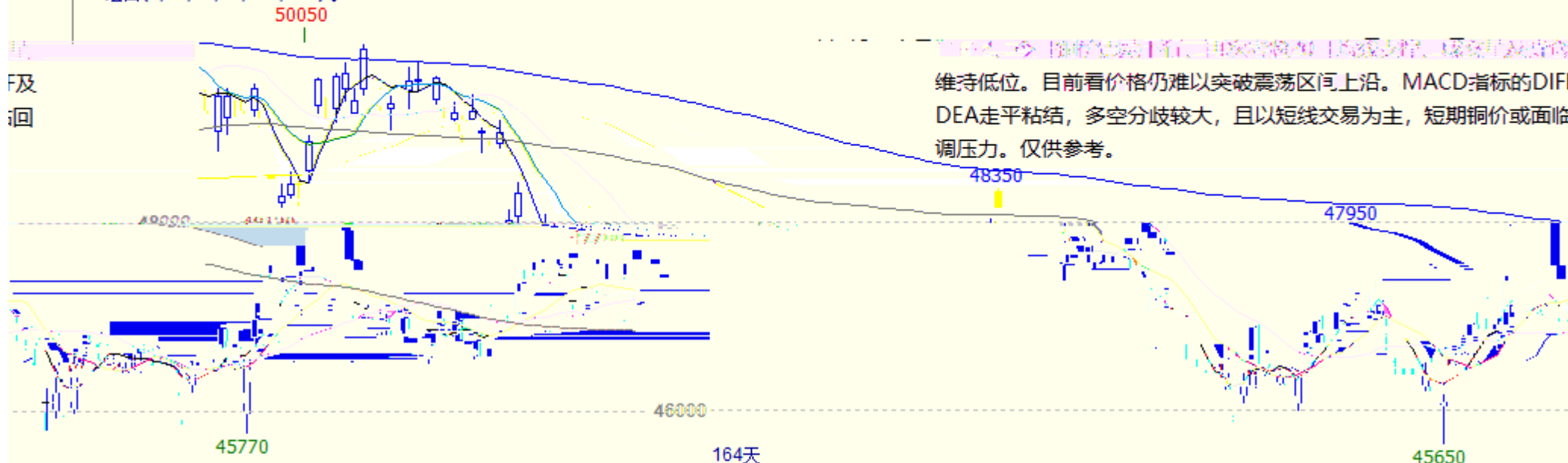


K

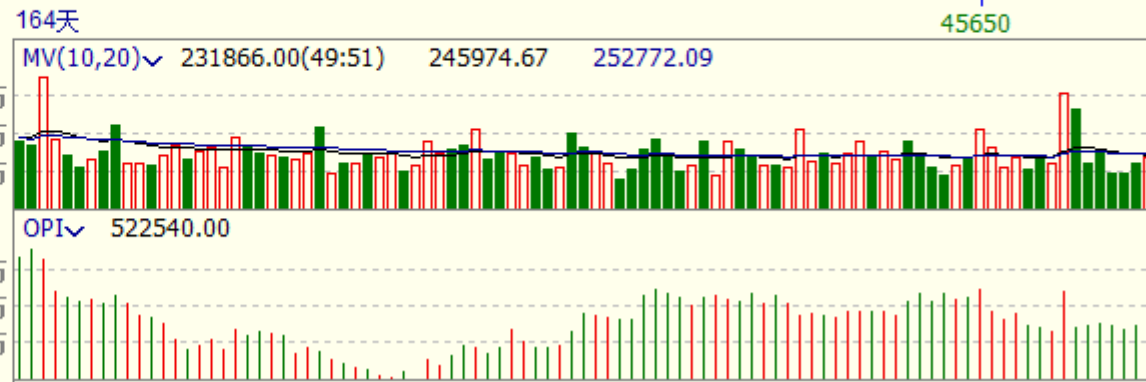
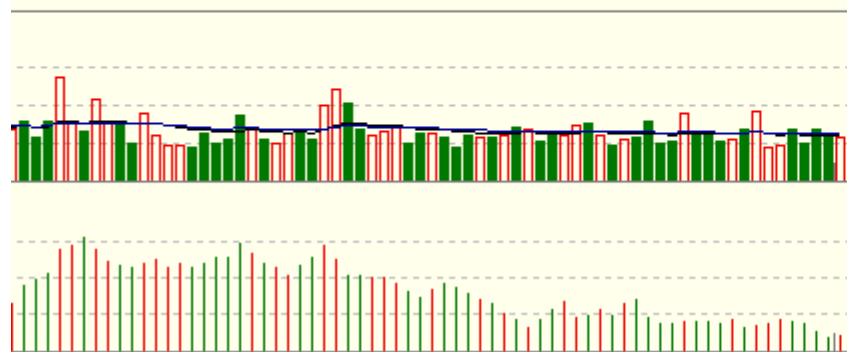
沪铜指数(SHFE 2100) 日线

MA组合(5,10,20,60,120,250) MA5 47262.00 MA10 47288.00 MA20 47182.00 MA60 46966.33 MA120 46856.67 MA250 47863.04

日
K
F及
回



维持低位。目前看价格仍难以突破震荡区间上沿。MACD指标的DIF/DEA走平粘结，多空分歧较大，且以短线交易为主，短期铜价或面临调压力。仅供参考。



K



—

“

”



020-22139858



020-22139813



020-22139817



020-22139824

5

1007-1012

510623