

2020 : 2020 "

" " " "

" 2020

6%

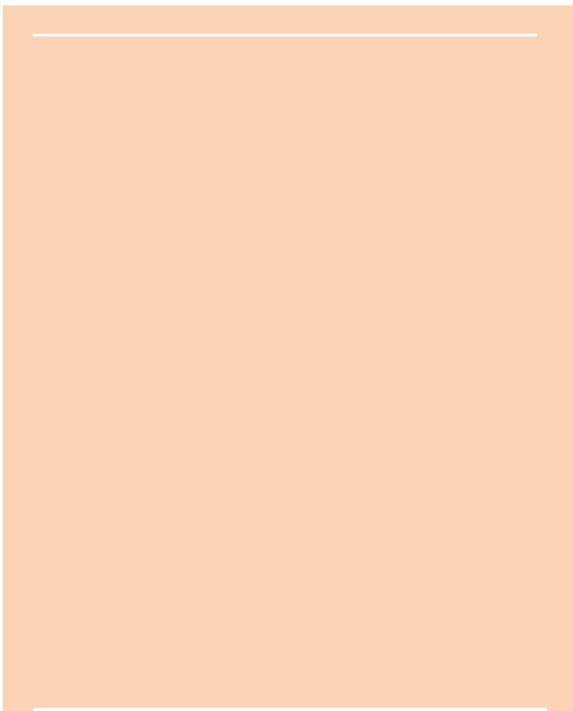
2020

2019

PE

PP

L-P



LLDPE



PP



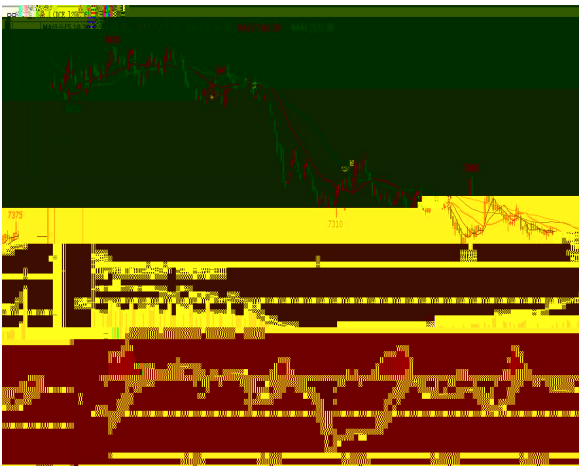




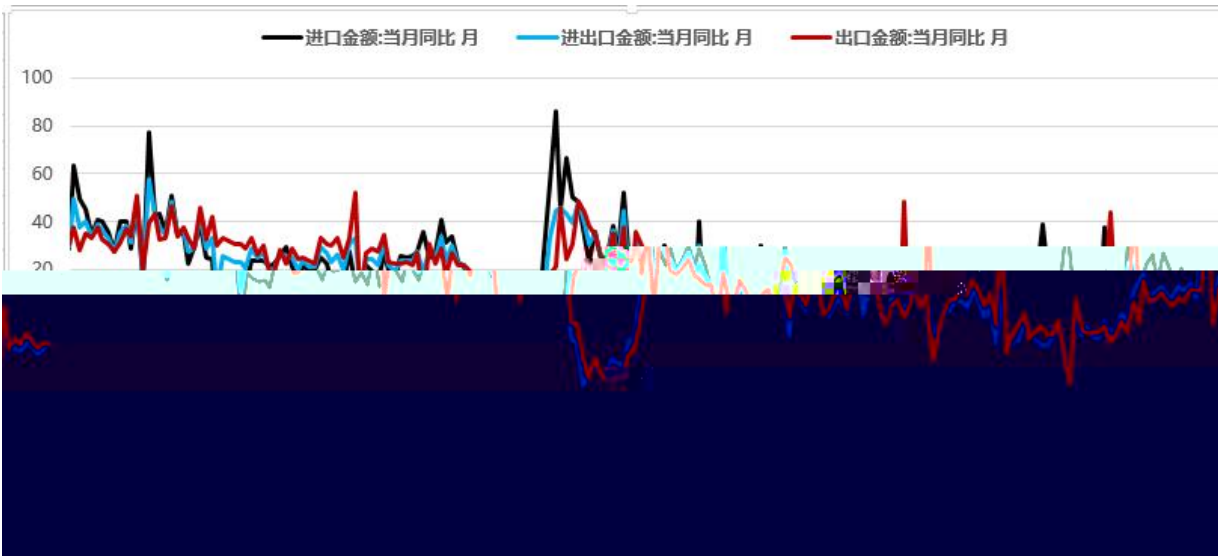




LLDPE/PP







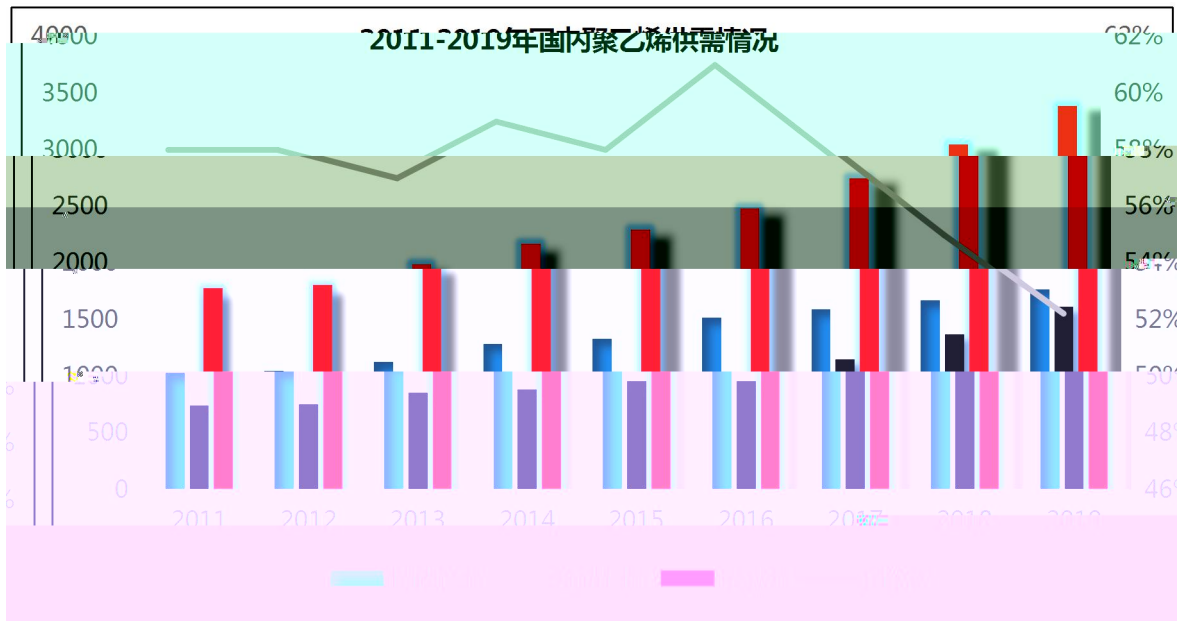


2

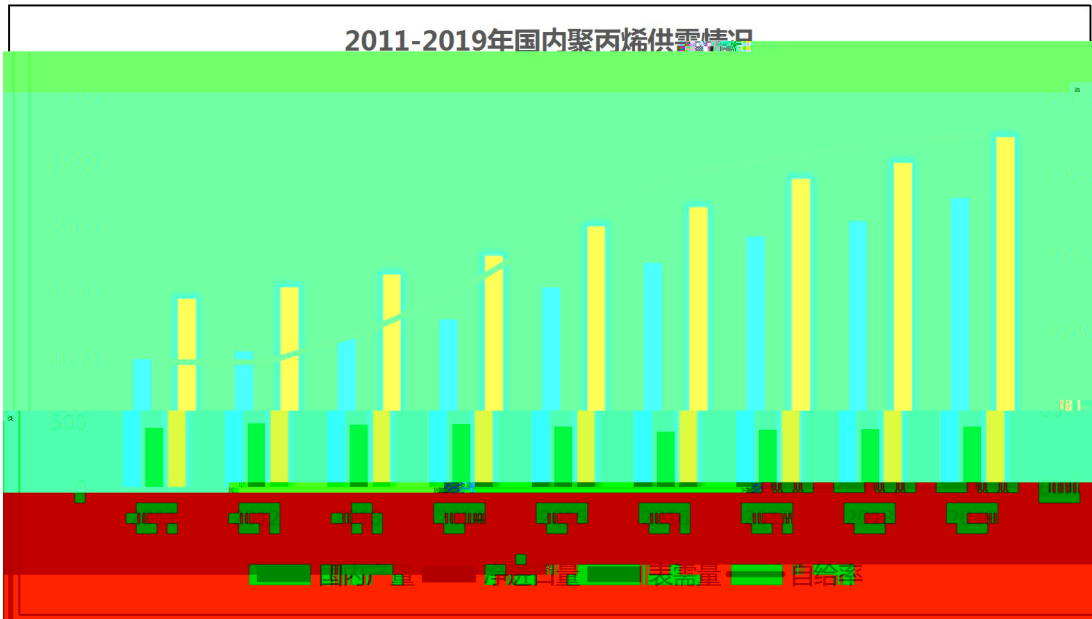
2.1

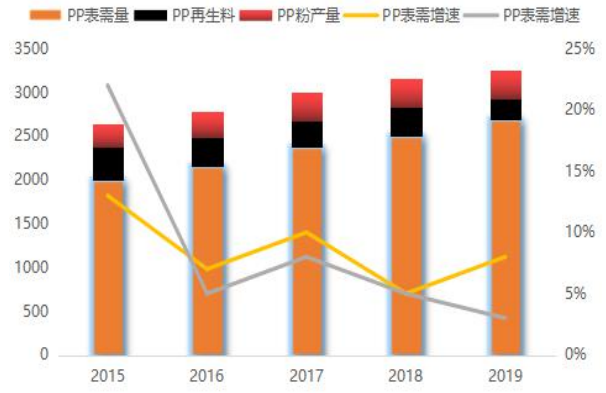
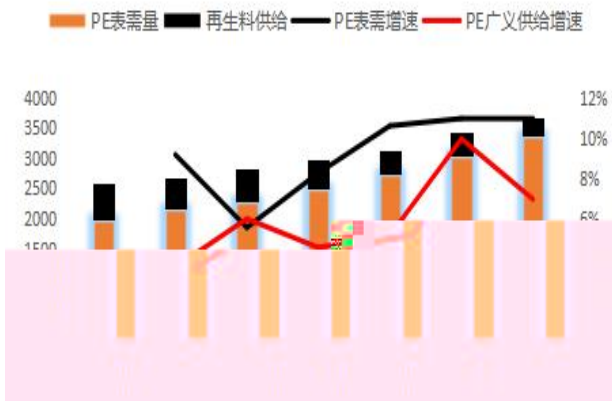
2.2



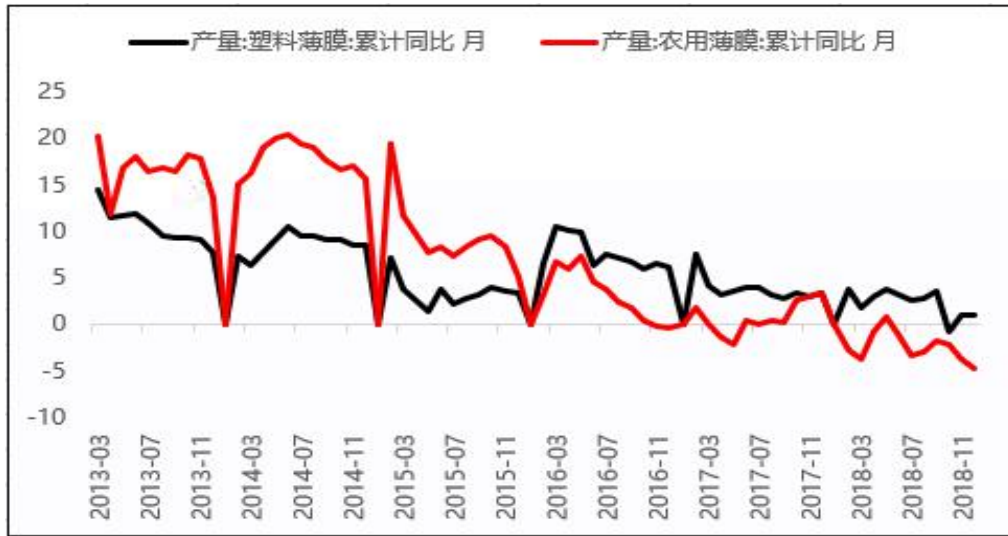








3.1 PE





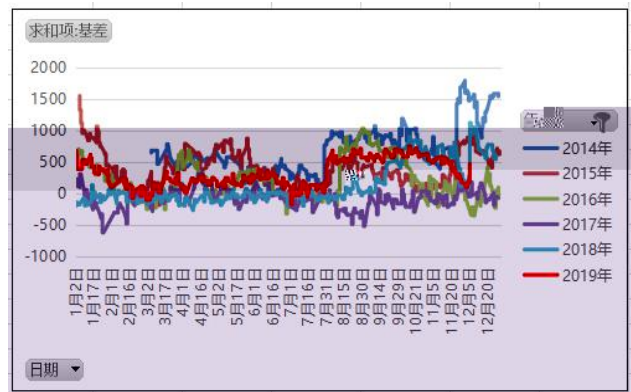
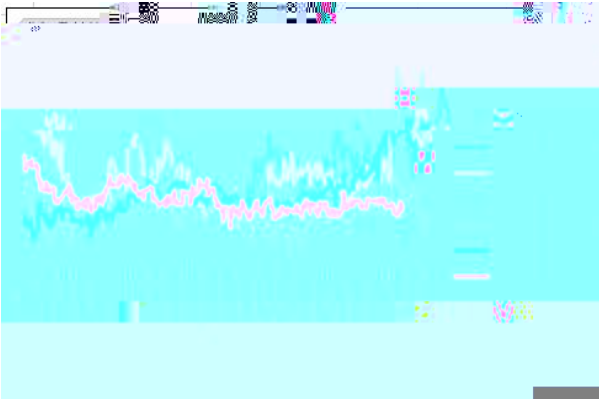


BOPP CPP		

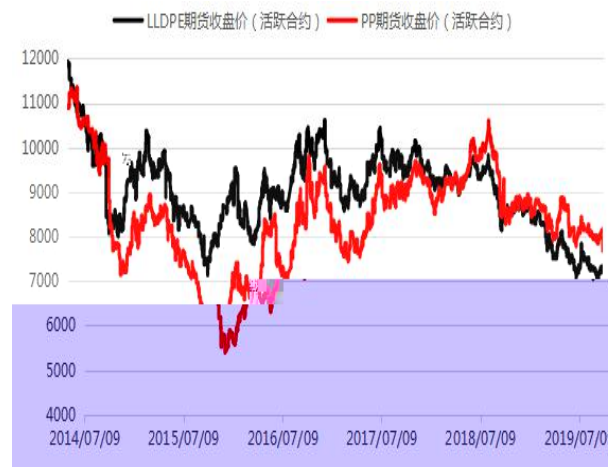
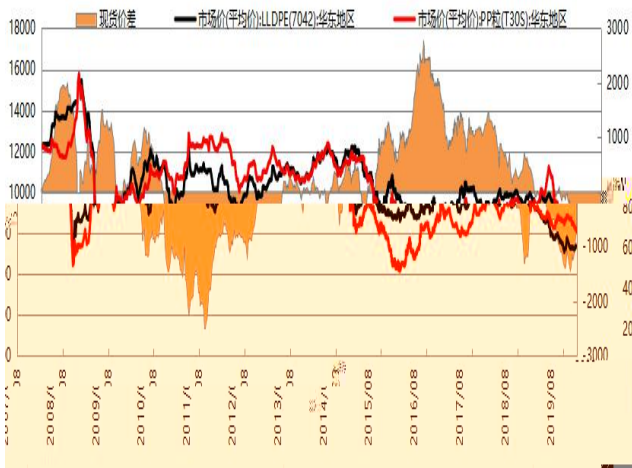
3.2.1

4

4.1 LLDPE PP

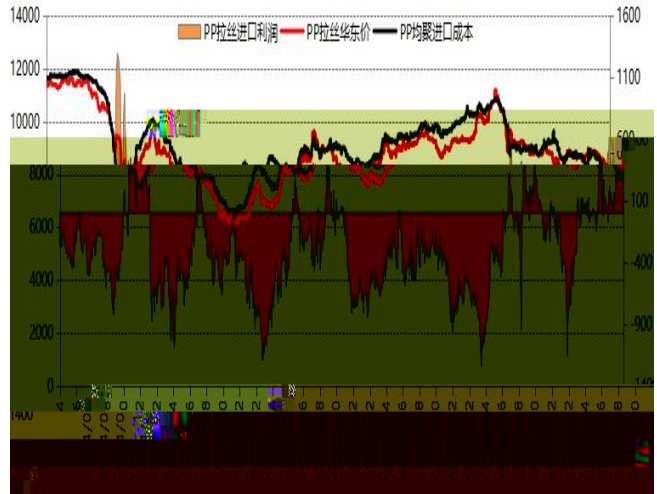
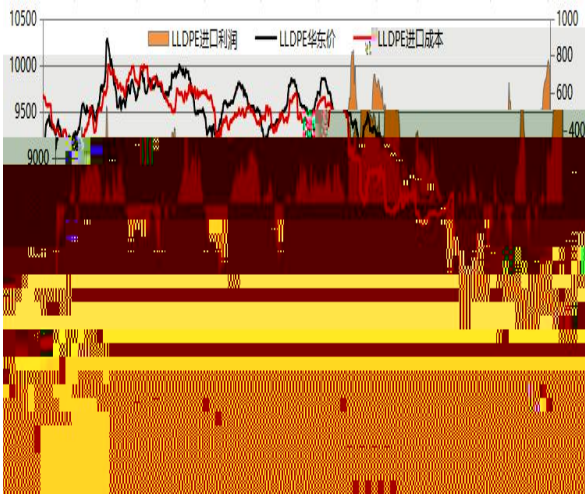


4.2 LLDPE-PP

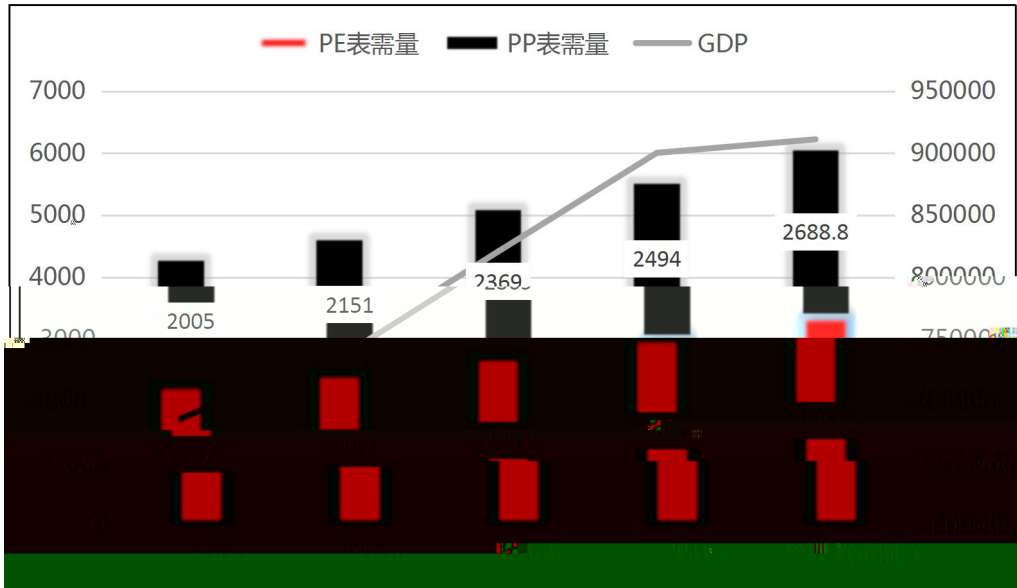


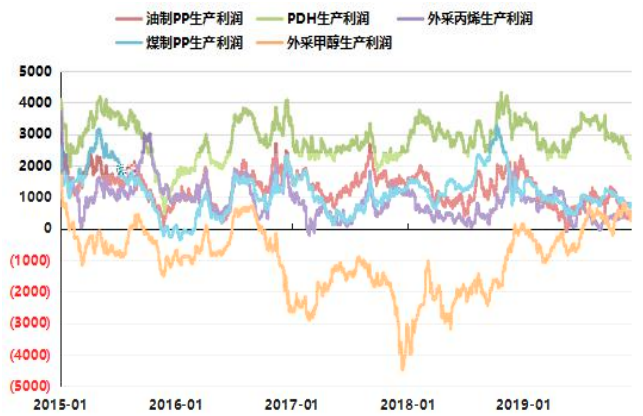
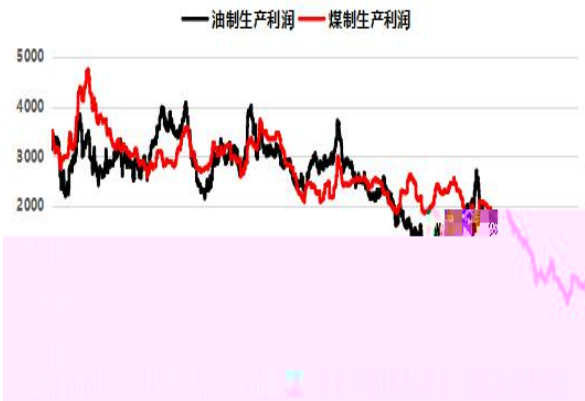
4.3 LLDPE PP





2020









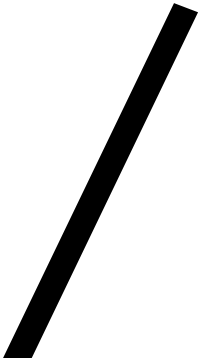
U

O

λ



O





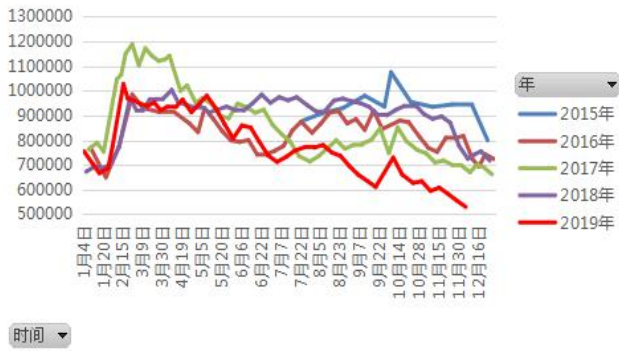
4 2020



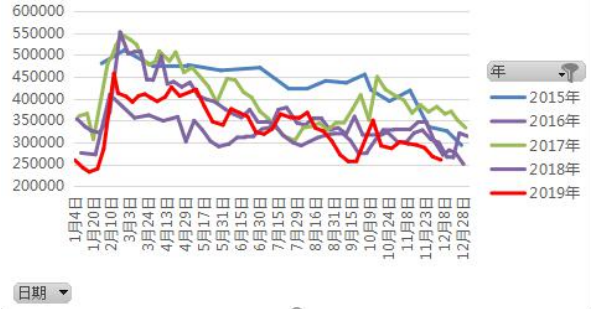
4.2 PP

4.3

求和项:PE总库存



求和项:PP总库存





--

