

020-22836112							
2022	1-2		1-2				20-21
							20-21
		1-2		"			" "
		" "		"			" "
2022							
	5.23%		2035	GDP			
				GDP			5.23%
				GDP			
				2022			5.5%
	5.23%						
			1	2021			
24.67%	30.16%	24.19%	4.8%	1.37%	14.81%		2
		5.5%					
				1:1			1%
				1.5%			3
		5.23%		GDP	21-22		
				2021			
			1		5.5%	5.23%	
			-2%			1%~3%	
			5.5%				
			9%	10.85%			
-2%				1%~3%		5.23%	
				6.85%~10.85%		-2%~2%	
	2022			2%~3%		2	
3	Q2				3		
	8.96%		2020			Q2	

F3022666
Z0013612
xuky@gzf2010.com.cn

F03087345
wu.yuxiang2@gzf2010.com.cn



20211230 - - - 12
-20211230

20211230 - - -
15%~20%-20211230

20220120 - - -
3 -20220120

20220323 - - & -
-20220323

2022	1-2	
		
		
		3
	GDP	4
		5.23%	5
		5
2022		6
	Q2	7
		
		
		

30

:

:

.....

.....

.....

.....

.....

.....

...

..

.....

.....

.....

2022 1-2

1-2 7.50%
 12.20% 20.90%
 8.10% 3.70%
 6.70% 31
 5.40% 5.50% 20-21
 20-21 2022 1-2
 " " " "
 " "

	2022		20-21

Mysteel

1-2

2020

2021

0.34%

4

0.37%-0.42%

1-2

-12.20%

-9.80%

1.80%

3.70%

-9.60%

19.30%

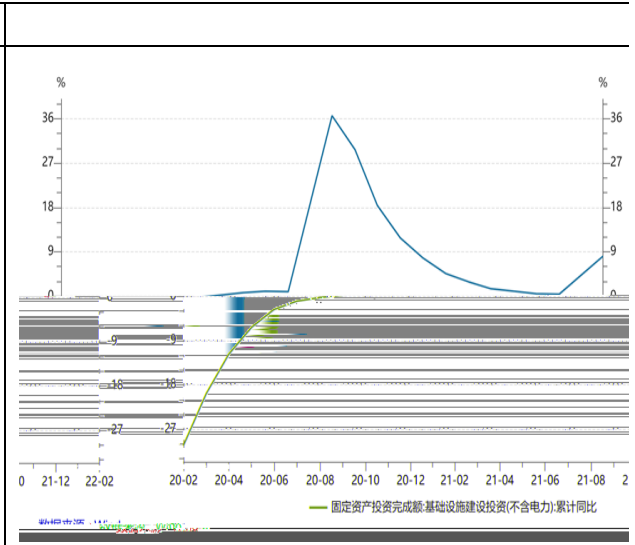
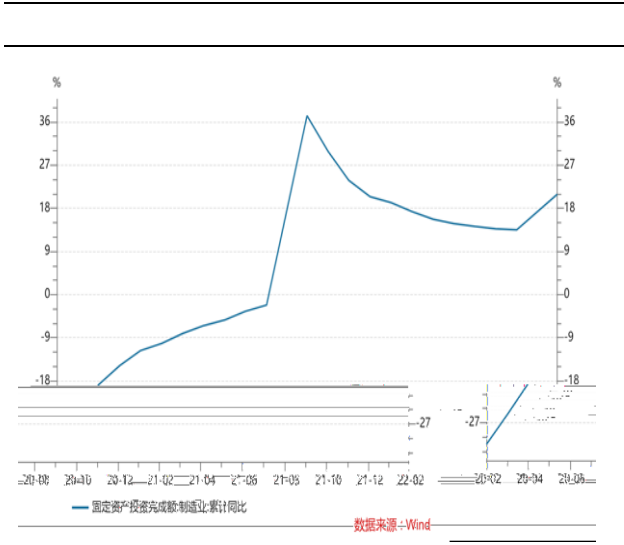
-42.30%

-17.73%

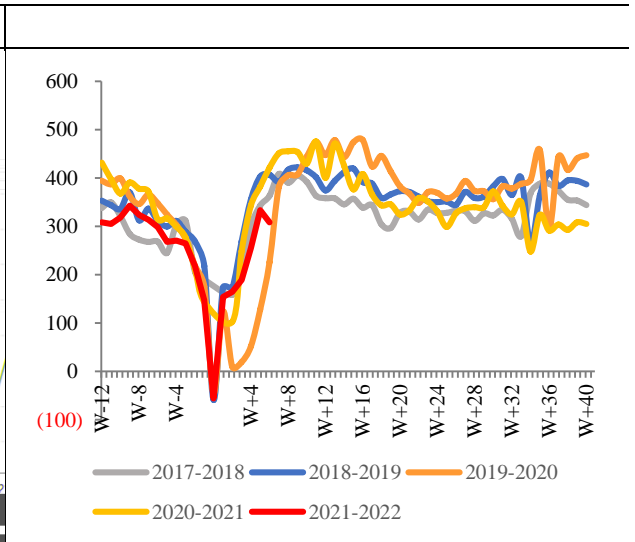
-8.9%

3%

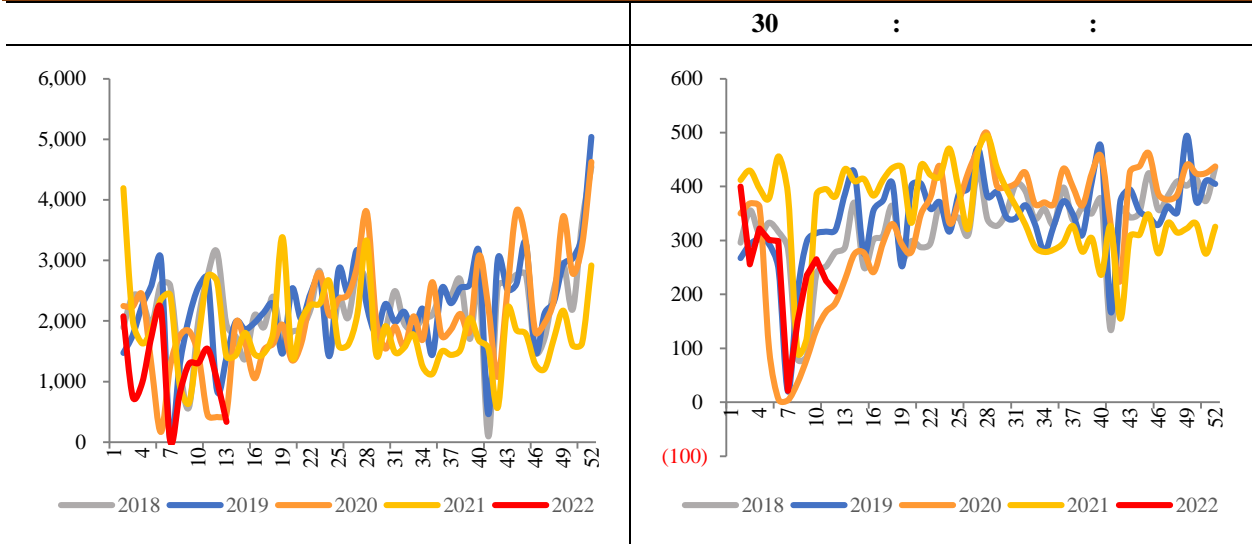
-29%



Wind



Mysteel



5.5%

2011 2018

2013

2017

2018

"

"

2017

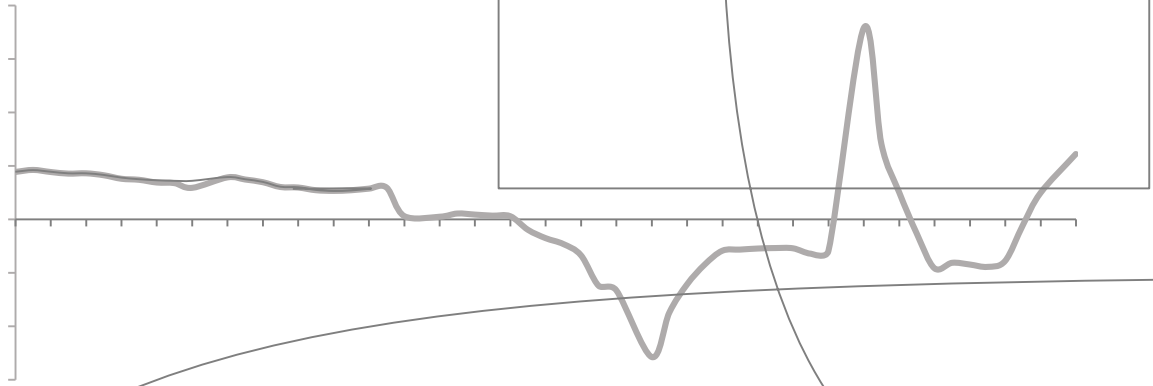
2017

2021

2021

24.67% 30.16% 24.19%

4.8% 1.37% 14.81%



Wind

GDP

			2016	2017	2020			
			8.10%	7.20%	2.90%	GDP	6.85%	6.95%
2.20%	2018	2019				5.90%	5.40%	GDP
			6.75%	6.00%				
		2018	2019				2021	2020
		GDP						
		"	"	"	"			
						GDP	3	2
			2021					

P2P

Wind

5.23%

GDP

2021

5.23%

5.68%

2022

2021

4.9%

2022

"

"

5.5%

21-22

65%

35%

5.5%

5.68%~9%

4.95%~10.85%

-2%~2%

2022

1%~3%

-2%

5.68% 5.23% -2%~2%
 6.85%~10.85% 2%~3%
 2022 -2%

“ ”
