

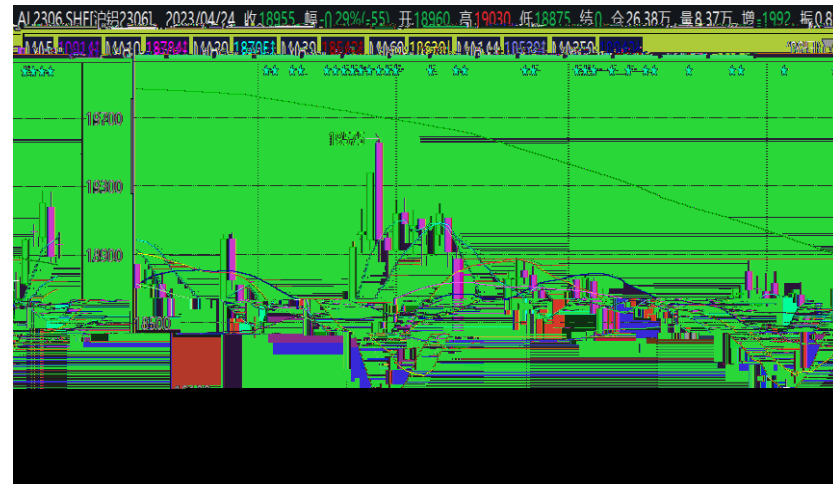
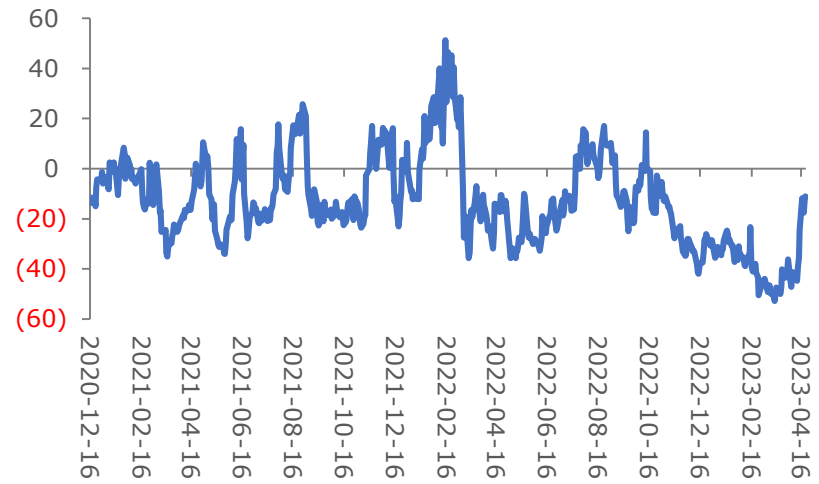
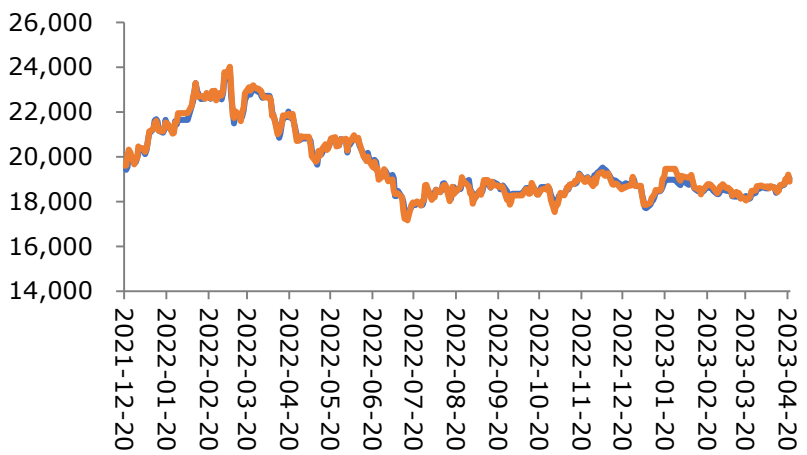
 01

 02

 03

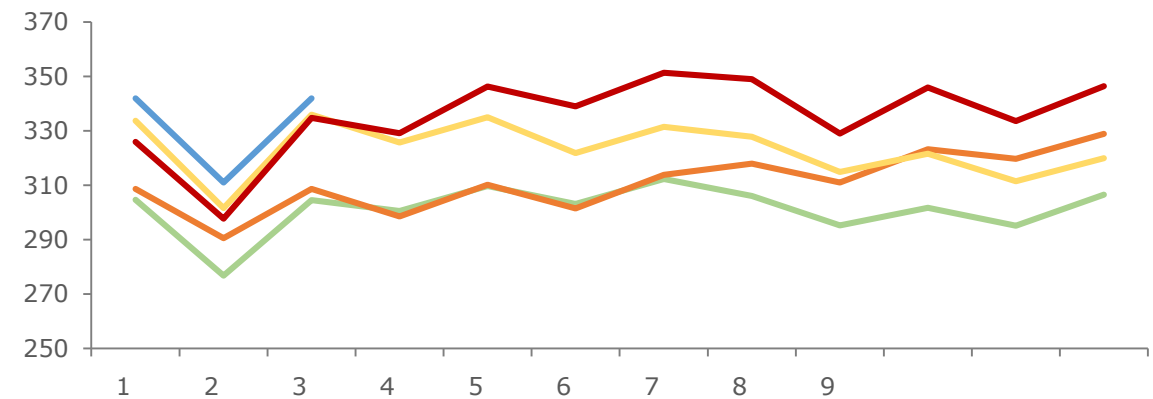
 04







3 **341.99** **+10%** **+2.1%**

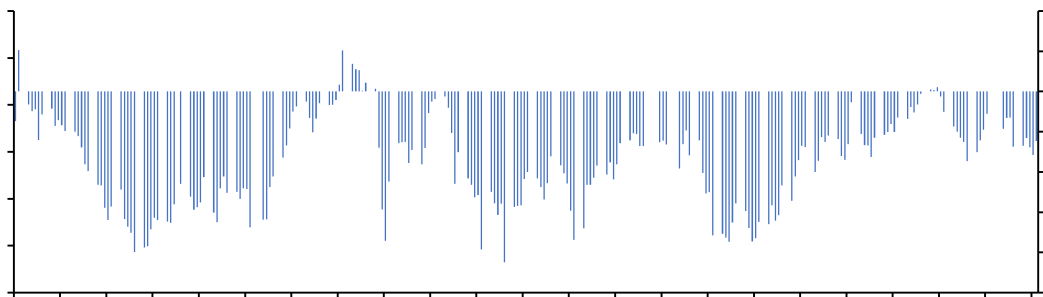


[Empty blue bar]

SHFE **26.16** **LME** **57.14**

90.6

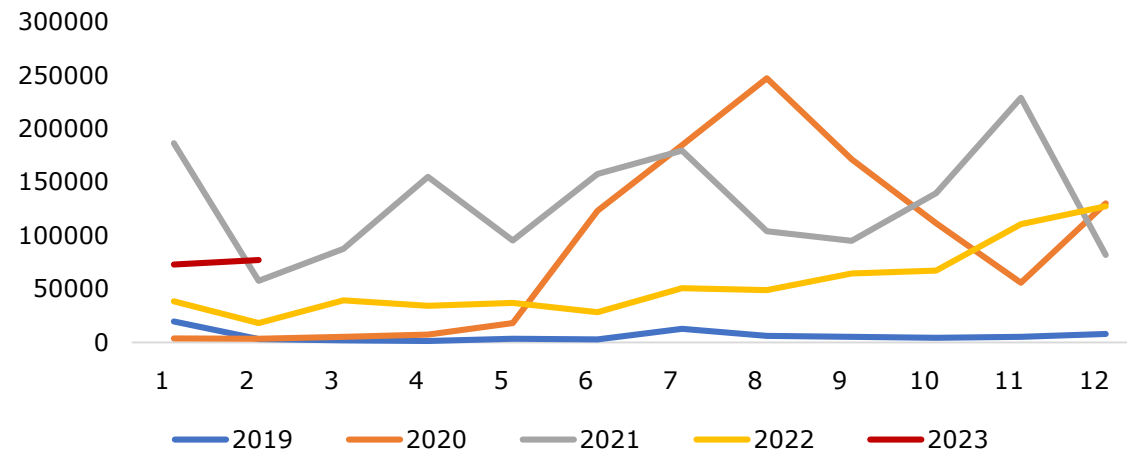
7.91



2

323.06%

5.72%



2

7.93%

-11.51%

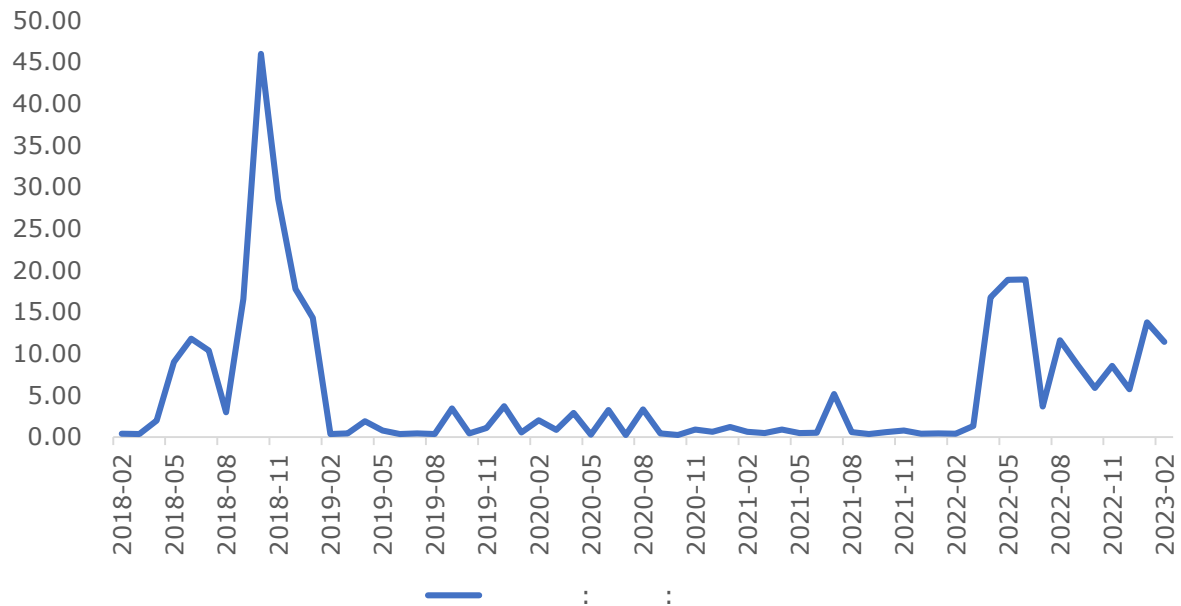
3

+1.71%

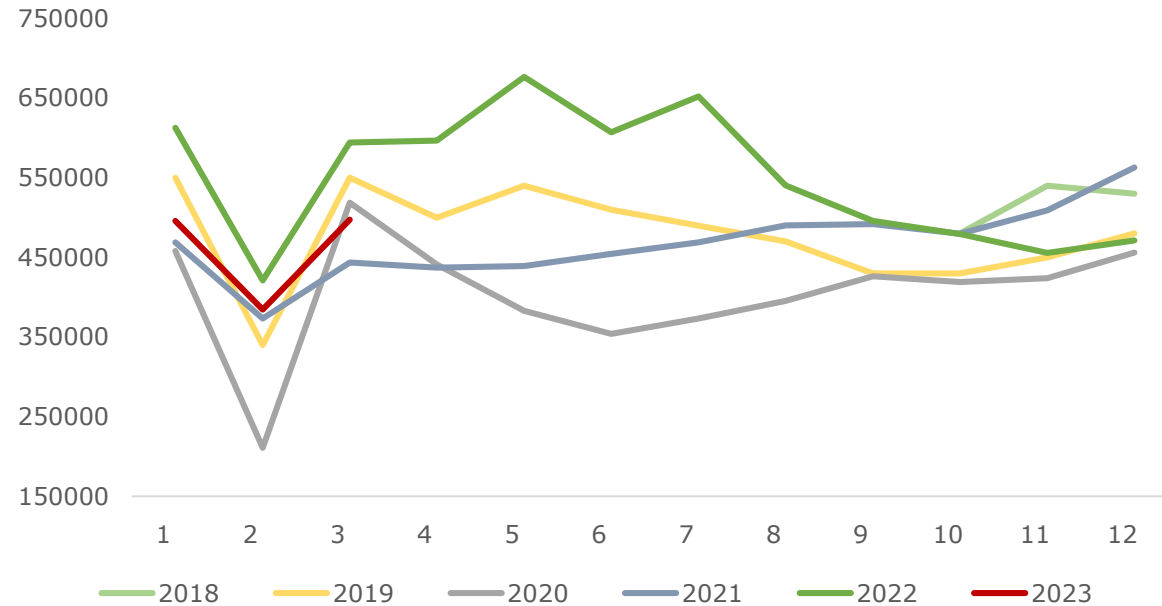
+3.83%

3

2 -17.1%



3 +29.3% -16.3%



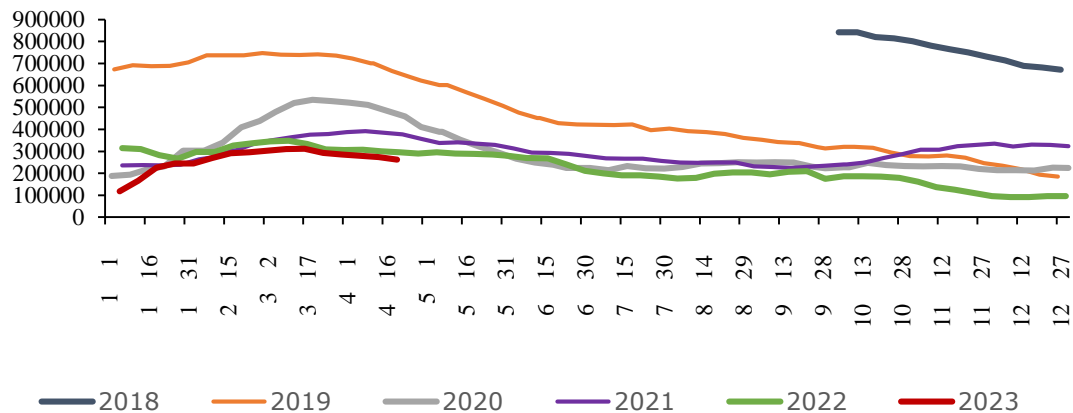
wind

:3

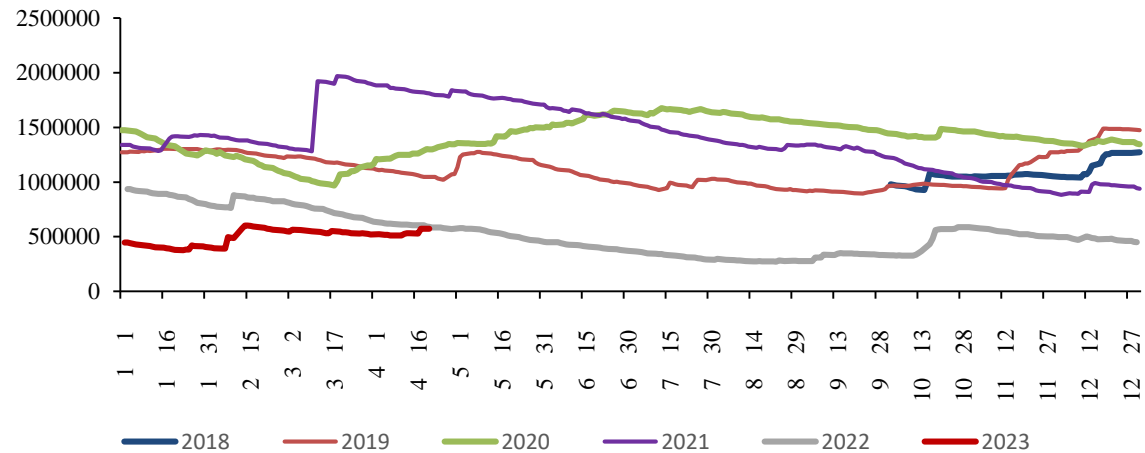




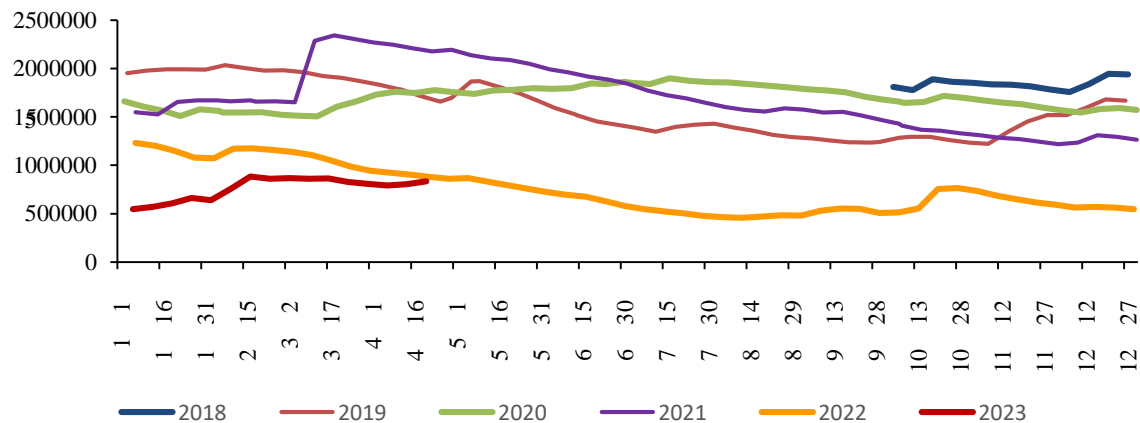
SHFE 26.16



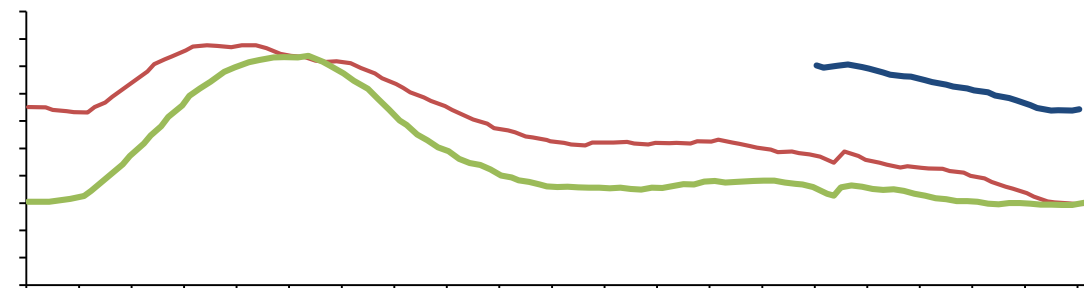
LME 57.14



LME+SHFE 83.3

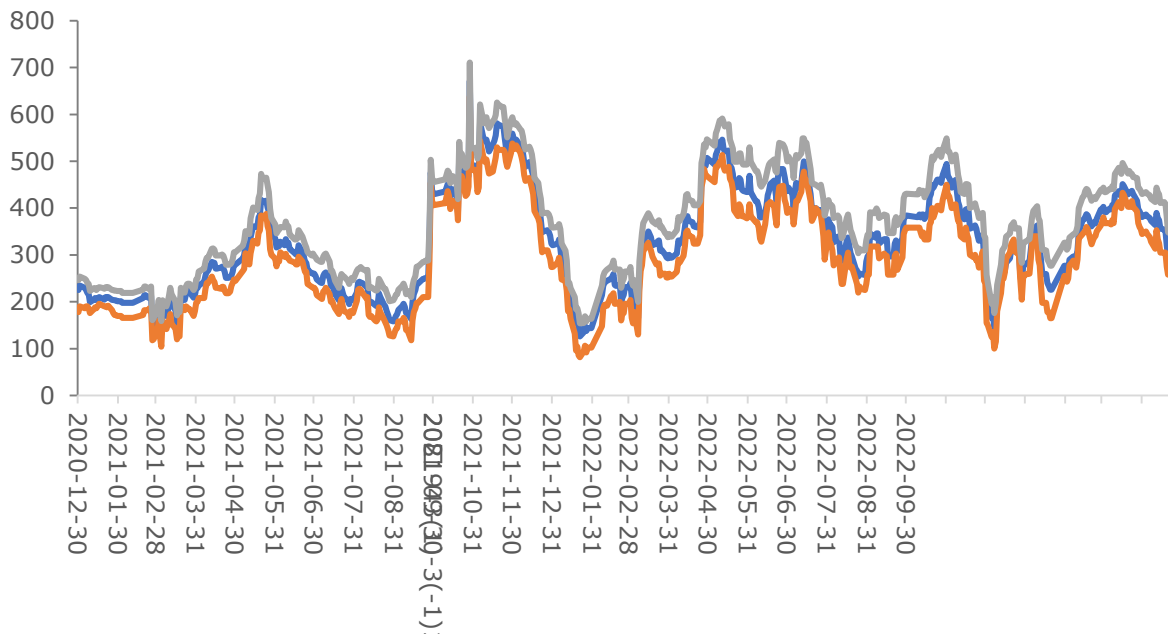


90.6 -6.2%



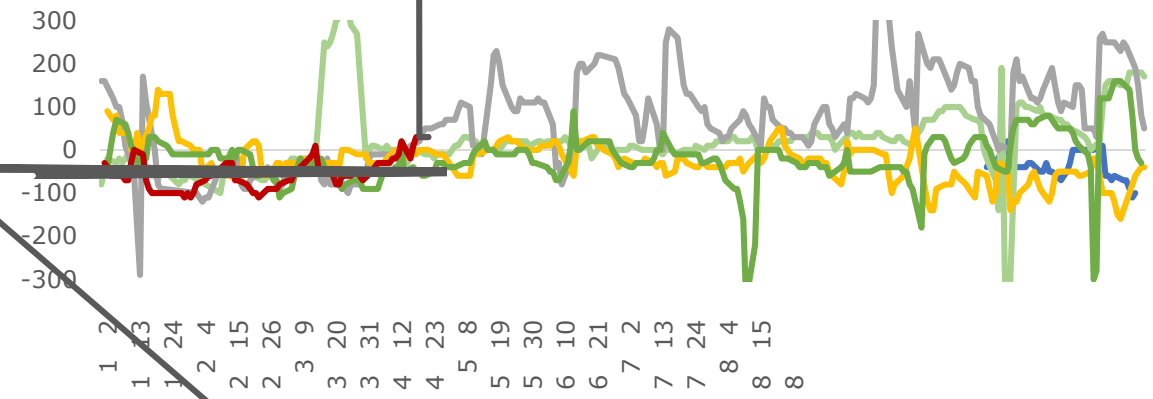
-15.3%

16.3



30 /

- +5 /



~~LME0-3 11 /~~



/



021-68905325 12 15 03 69 1	0571-89809624 2 1301 111	028-83279757 12 6 802 4	021-50568018 899 1201-1202
0757-88772666 28 2 2301 2302	0755-83533302 A 704A 705	0757-88772888 57 2 3006	0769-22900598 1501B 2
020-31953184 2 1306 105	0763-3808515 2 04 05 06 25	0758-2270761 1704 1705 2	020-61887585 8 803B 171
010-63360528 -5 32 101 12 1211 24 1	027-59219121 A 14 1401-9 193	0531-66671202 B 906 8	0371-86533821 80 1 2 23 2301
0532-88697833 100 905	020-22836158 6 1	020-22836155 6 1	020-22836182 6 1
020-22836185 6 1	021-50390265 388 701		

