

F3022666
Z0013612
xuky@gzf2010.com.cn

BACK.....

	4		3	CPI	5%	
	5.2%	6%			LME	
					LME	
	8426-9183		66120-70540			
	66000-71000					
	5					
	25 BP	5-5.25%			5%	2%
	4	15	24.5	24.0	23.9	
			3			
		GDP	1.1%	2.6%		
			1.9%			
	--	PCE	4.9%	4.7%		

1 :GDP: : :

Wind

	2023	4	28			39.1
2022	24.1		15			
		LME		6.5		8.9
		COMEX	2.8		3.5	0.7
SHFE	13.7			6.9		6.8
	16.2		4.8	11.4		4
					LME	

3 JOLTs

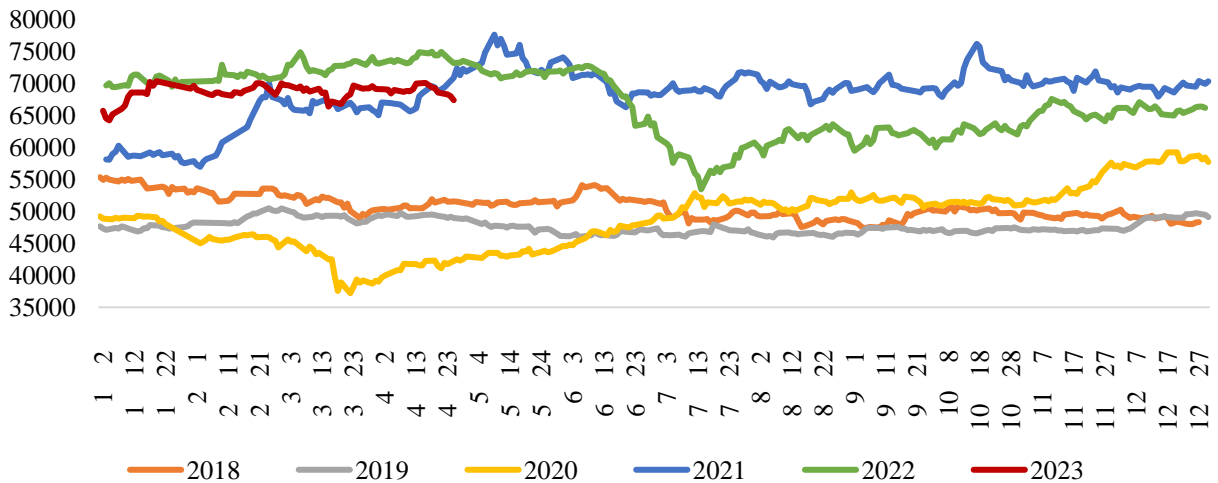
4 ISM 47.1 3

2009 1.1% GDP

64000 5 64000-68500

4

2



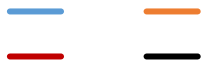
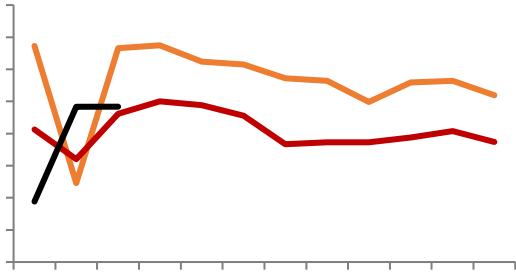


9

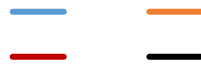
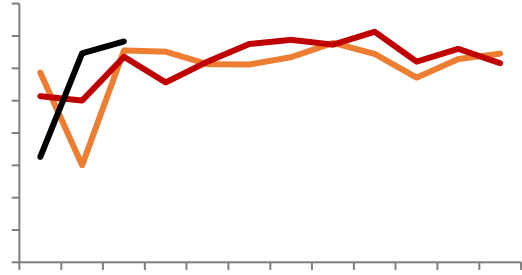
Wind



15

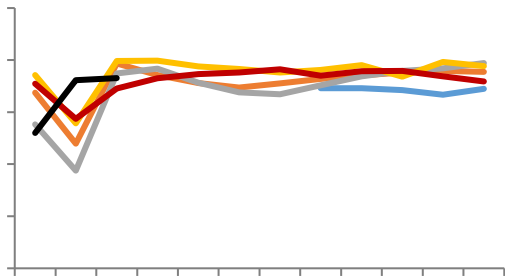


16



Mysteel

17



Mysteel

18

19 SHFE

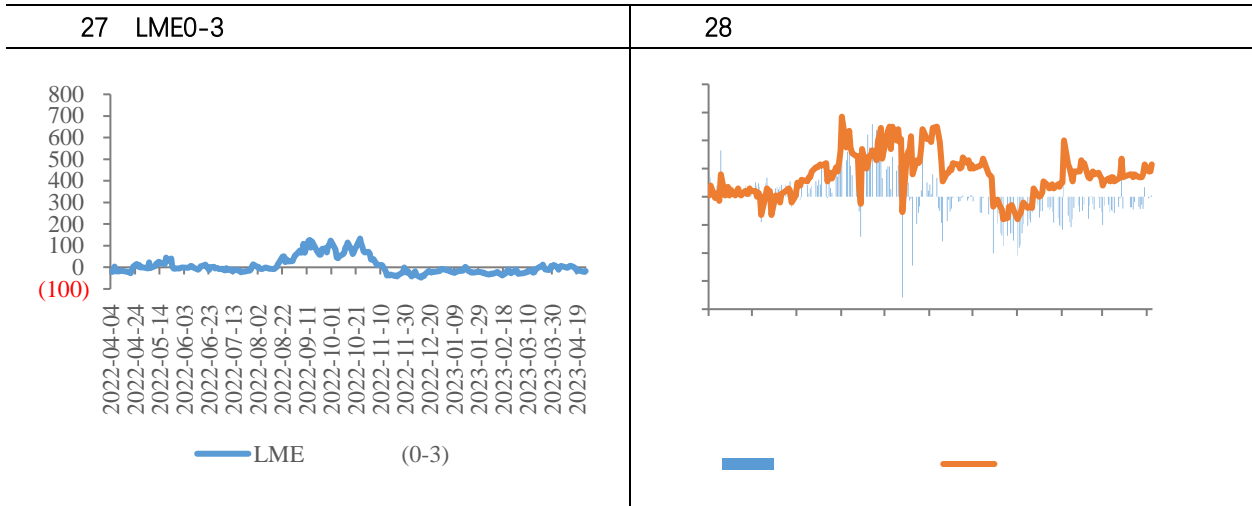
20

Wind

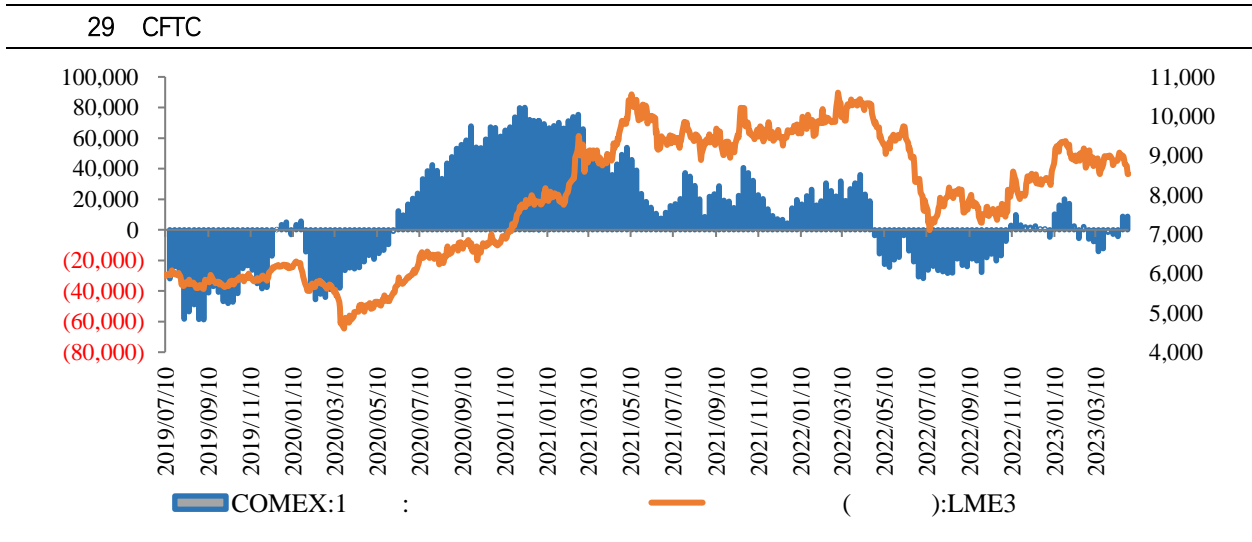
21 LME

22

Wind



Wind



Wind

1	3			
		0.4%	2	--
				-0.1%
				-0.7%
2	3			
				76.4%
				95.8%
4	26			
				2023 3
				12.3%
		32.3%		
				18.0%
				20.2%
		98.5%		22.3%
				44.4%
				76.4%
		98.0%		
				14.5%
		99.4%		
				30.7%
		95.8%		

3			7		
	4	25			4
	3	104	101.3		104
			68.1	7	
151.1					
4 JOLTs					
	10	3			JOLTS
				1000	959
			977.5		
