

 01

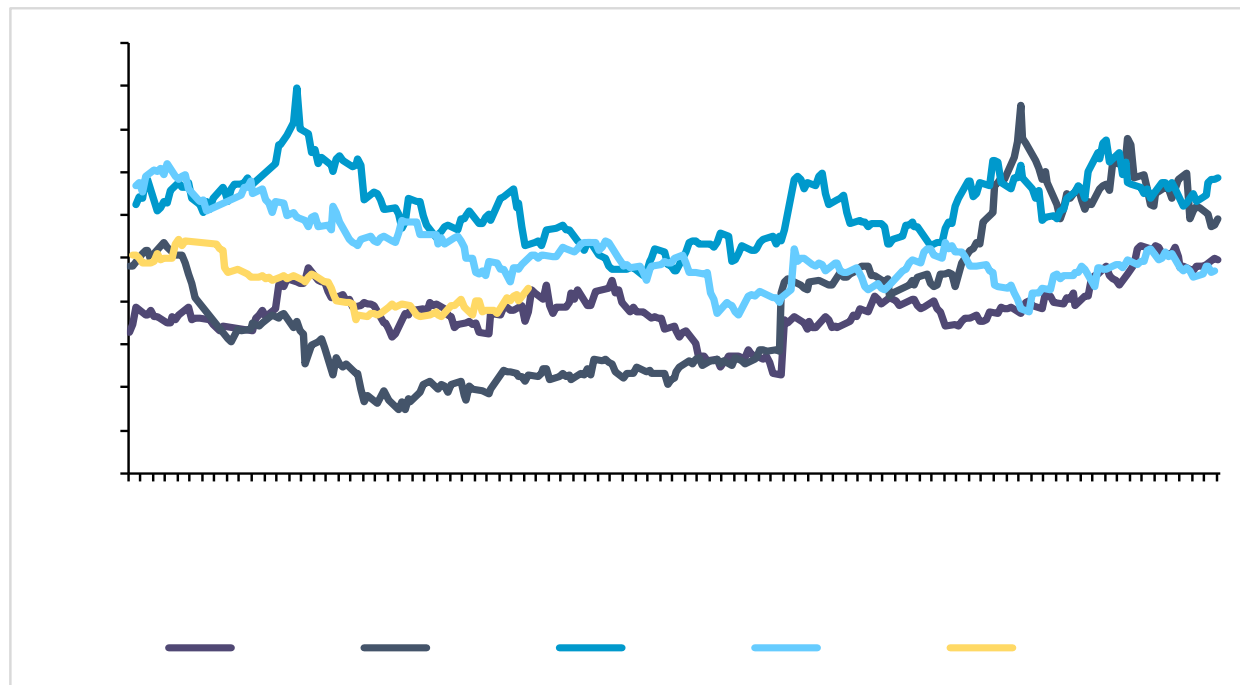
 02

 03

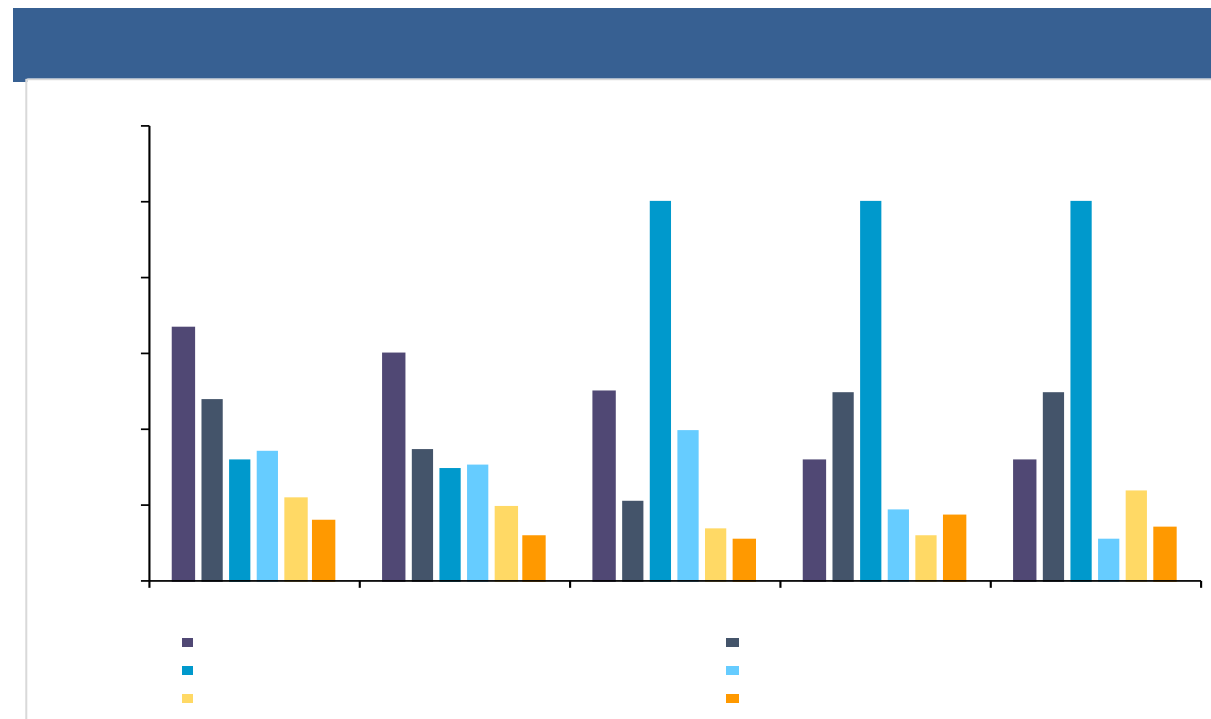
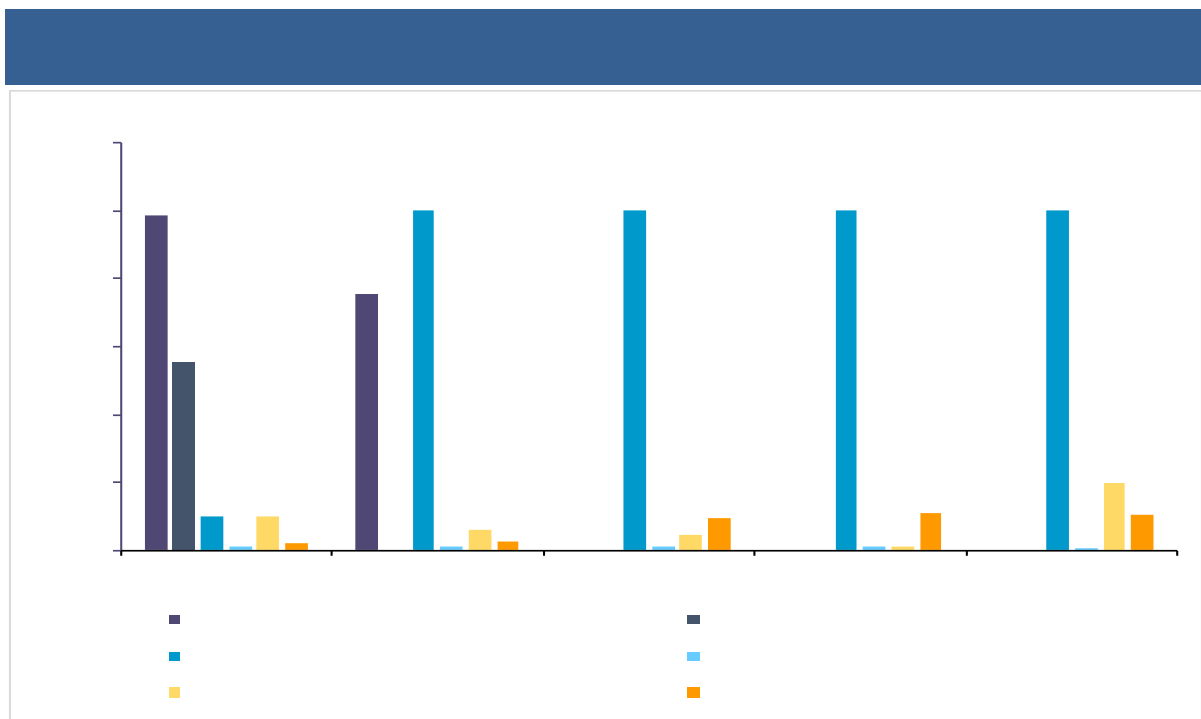


2022/6/9

12060 / 0.5%



ifind



ifind

- 
- ✓
- ✓
- ✓

ANRPC

&

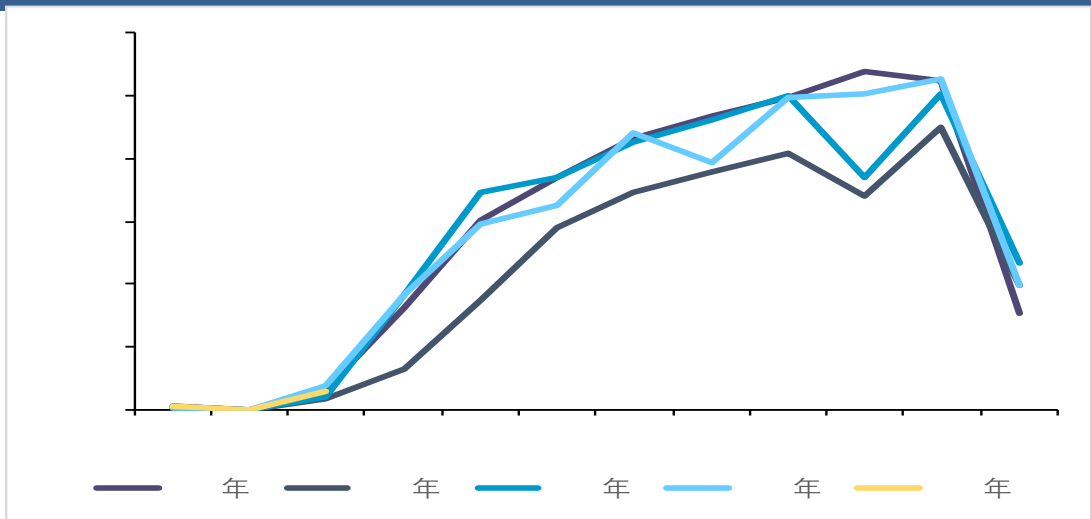
&

ANRPC	4	71.72	-4.87%	+2.15%
-------	---	-------	--------	--------

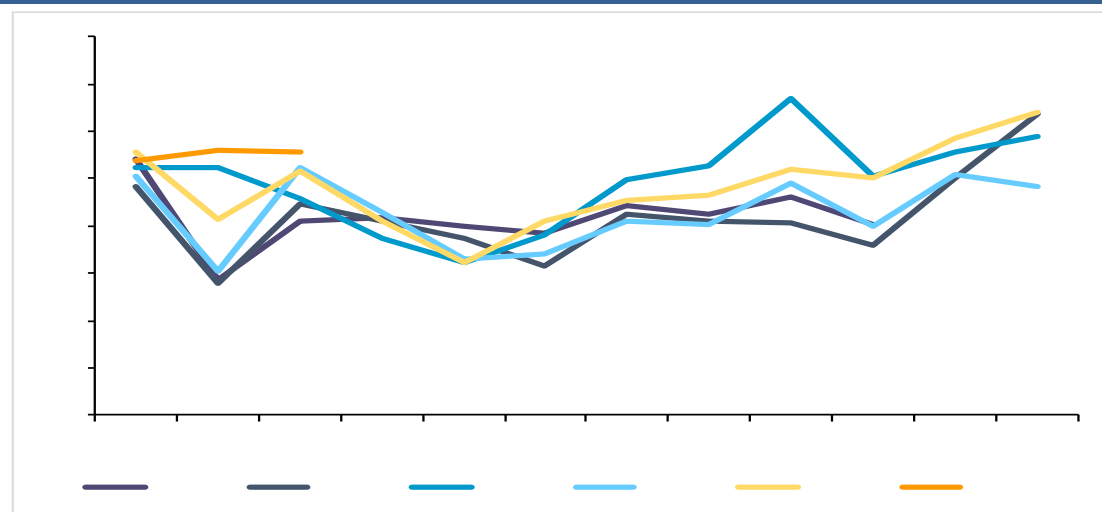
ANRPC	4	86.24	-4.46%	+6.14%
-------	---	-------	--------	--------

ANRPC	<b>Wind</b>	7	90.95	+5.30%
-------	-------------	---	-------	--------

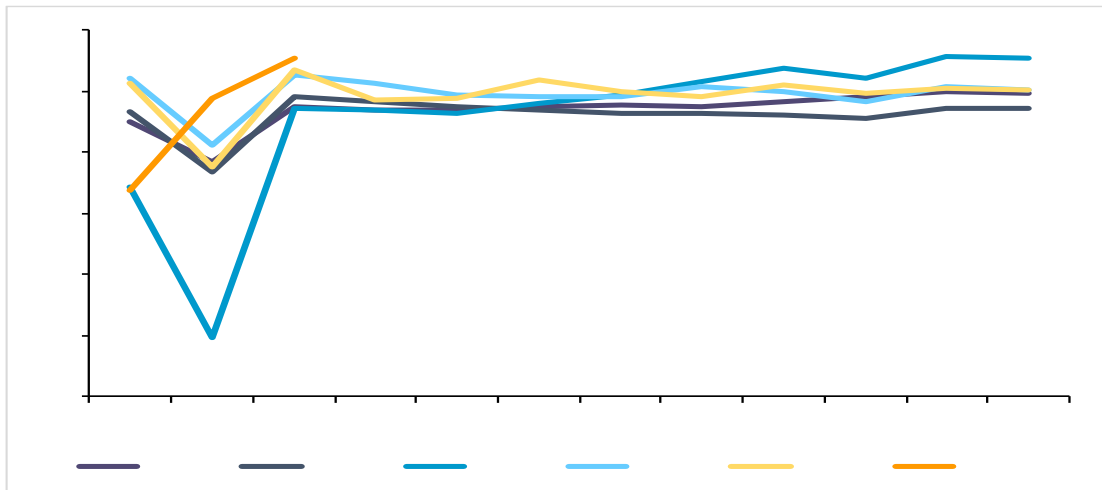
3 7500



3 4300 +194.44% +89.29%



3 55.3 +13.09% +3.46%



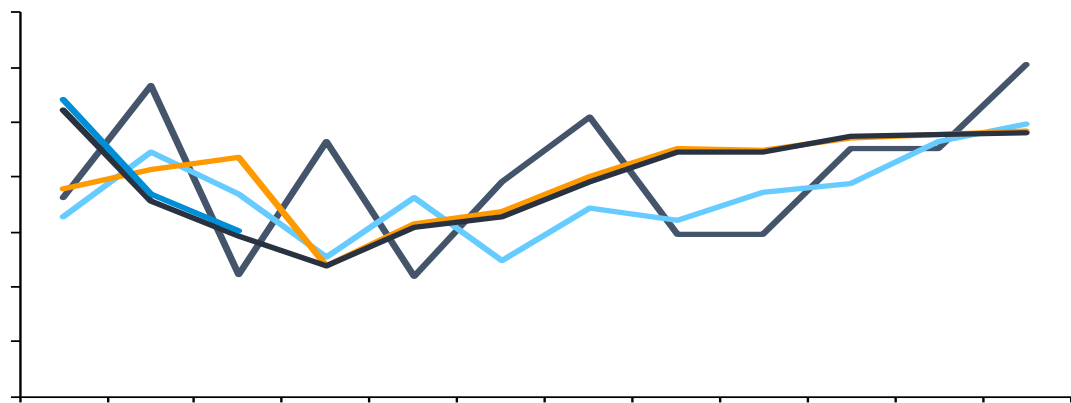
✓

✓

✓

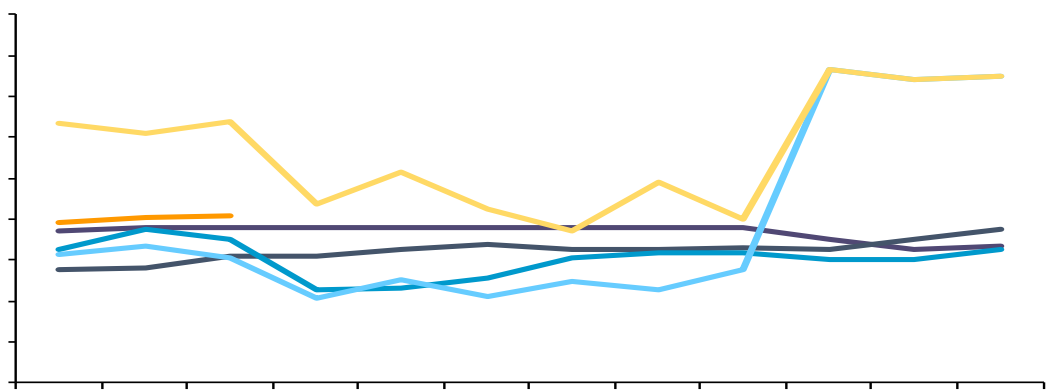


4      24.54      +3.46%      -18.66%



—      —      —      —      —

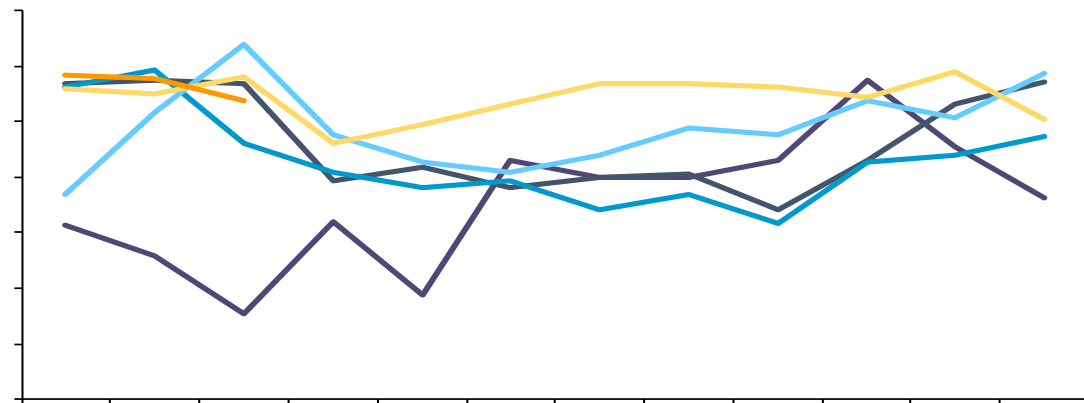
4      6.37      -26.87%      -22.03%



—      —      —      —      —      —

ifind

4      35.56      +7.56%      3.76%



—      —      —      —      —      —

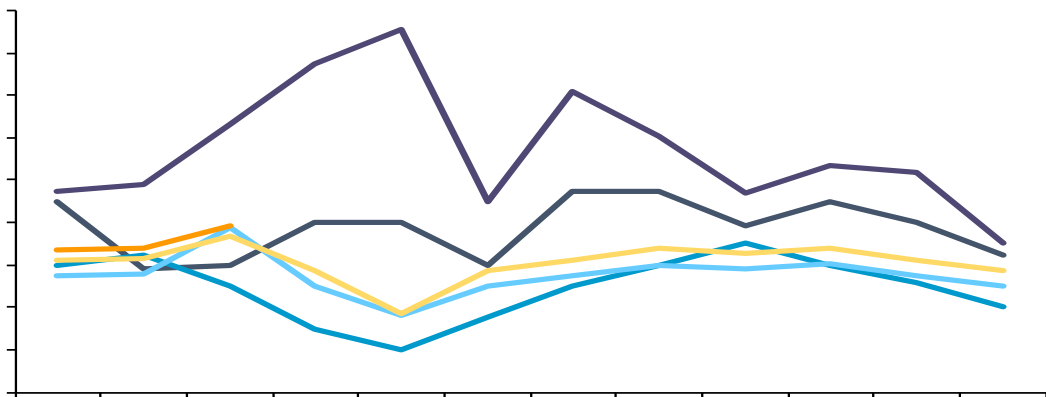
✓

✓

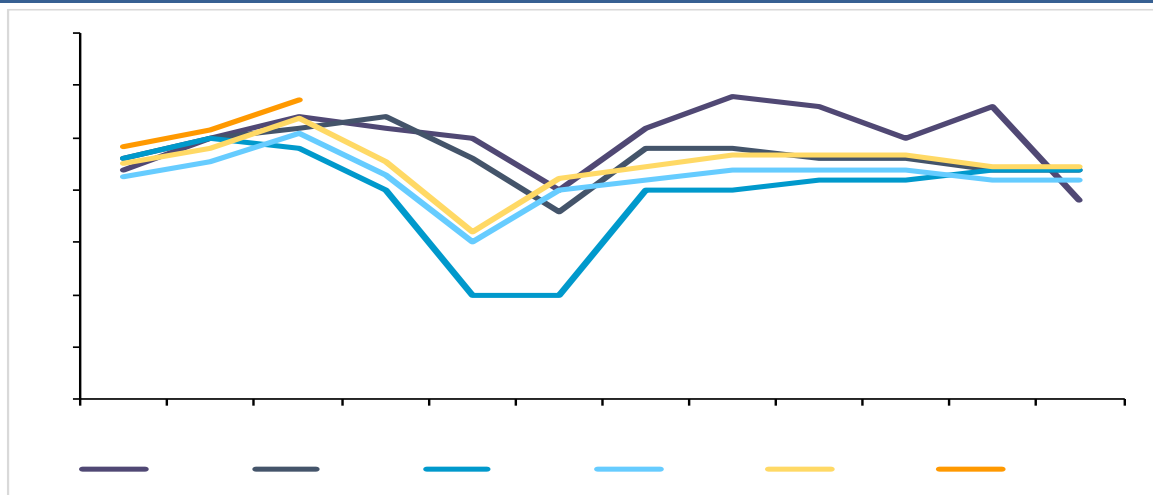
✓

4      26.19      +1.75%      -5.93%

4      20      -2.58%      +5.26%



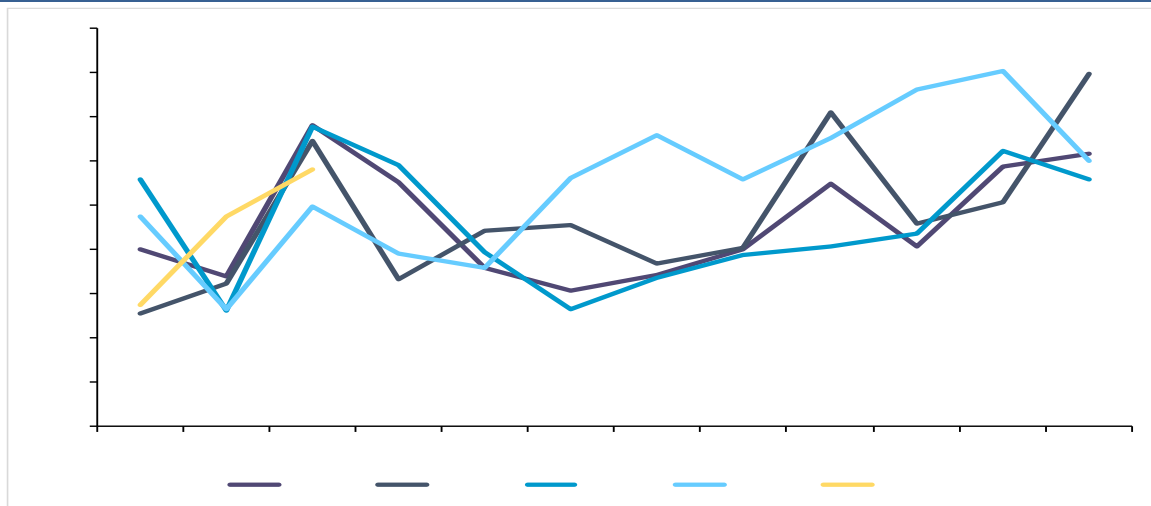
4      5.44      +3.23%      -7.33%



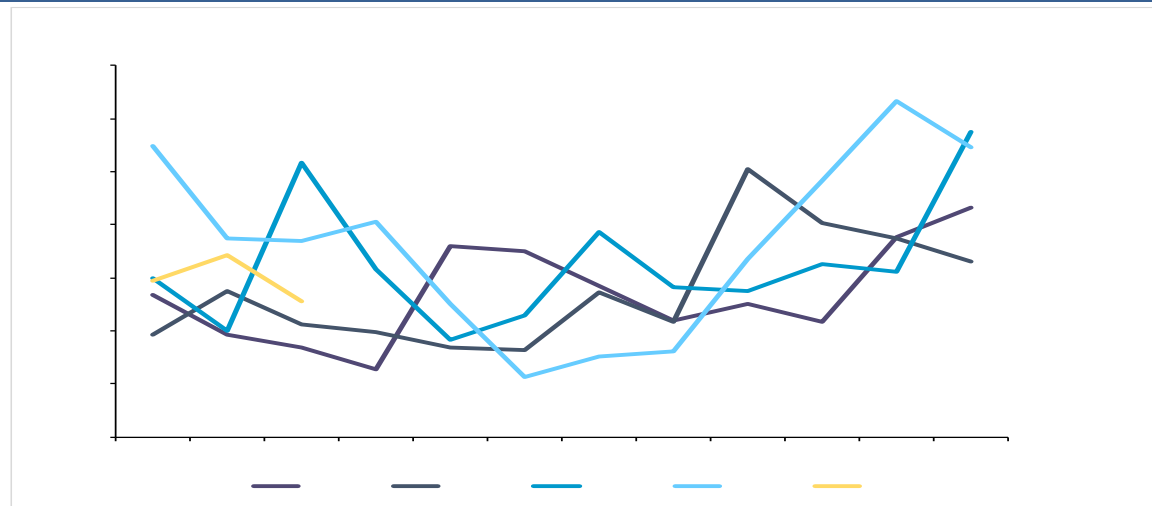
ifind

- ✓
- ✓
- ✓

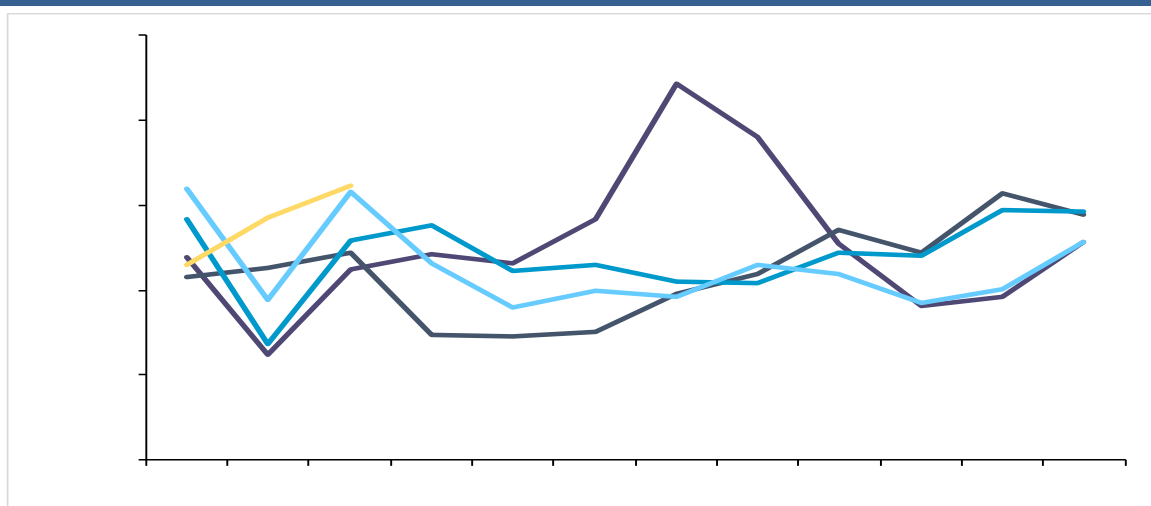
2023 1-4 17.03 +27.33%



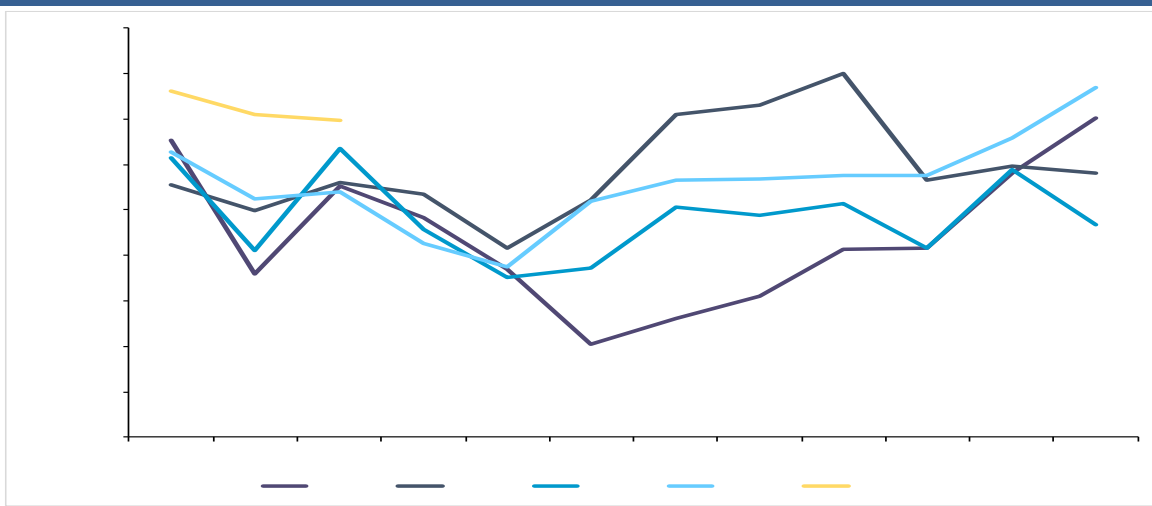
2023 1-4 5.20 -30.26%



2023 1-4 59.53 +41%



2023 1-4 141.91 +66%



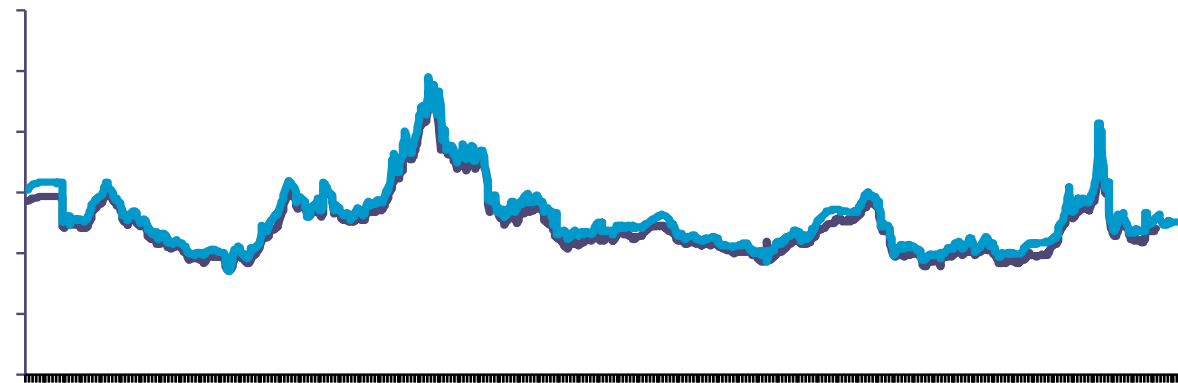
2023 1-4

11900

-49.97%

复合橡胶年进口量 (万吨)





ifind

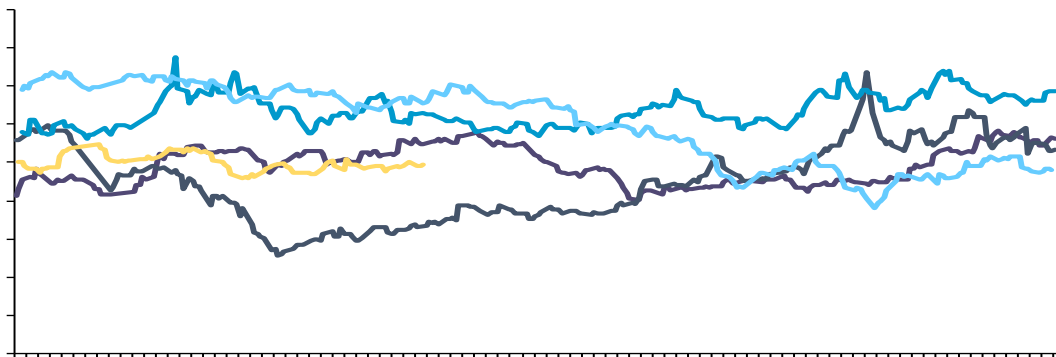
✓

✓

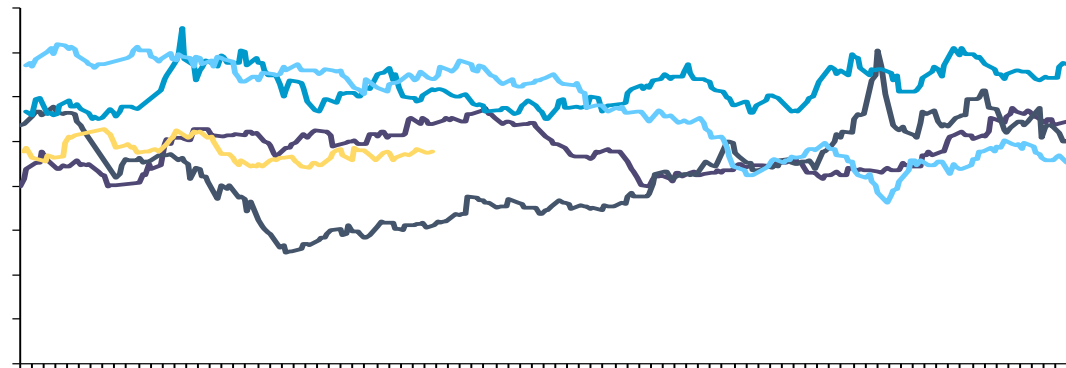
✓



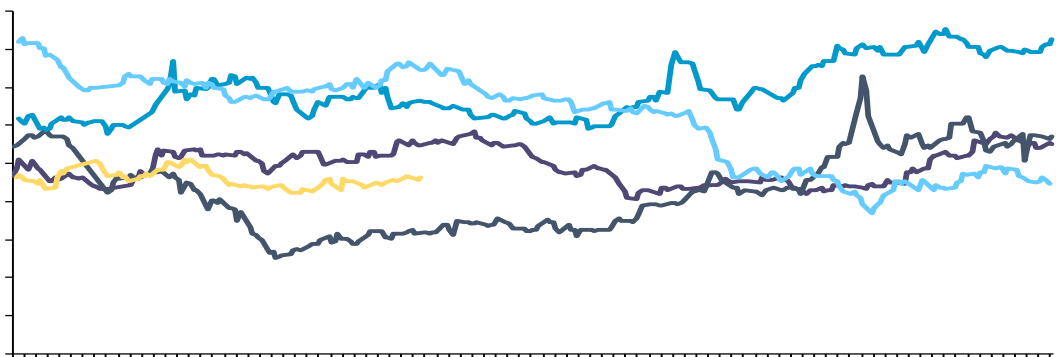
20



20

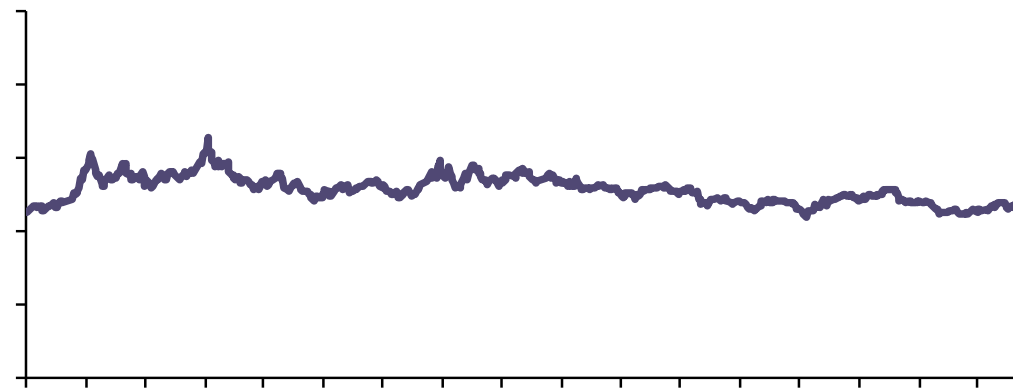


20



ifind

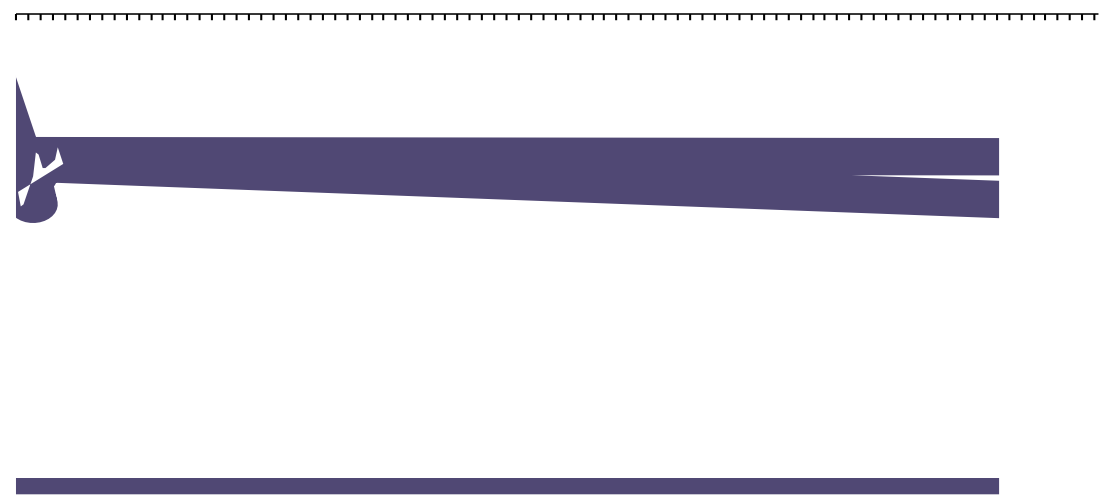
- ✓
- ✓
- ✓



ifind

✓





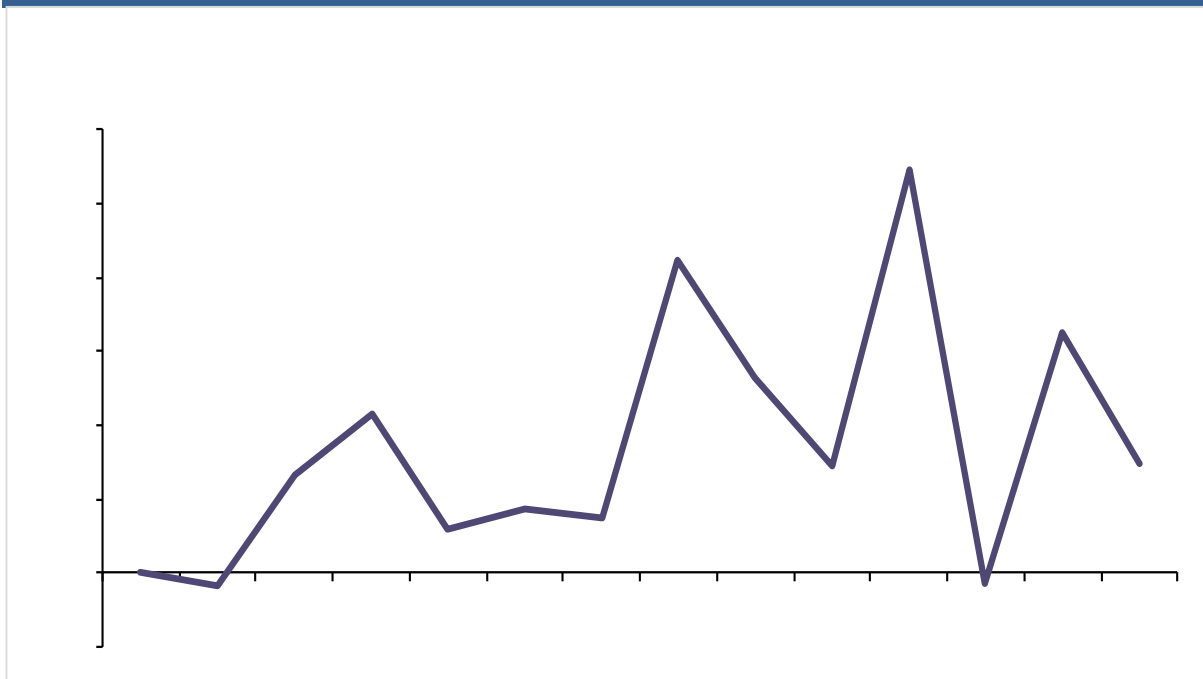
ifind



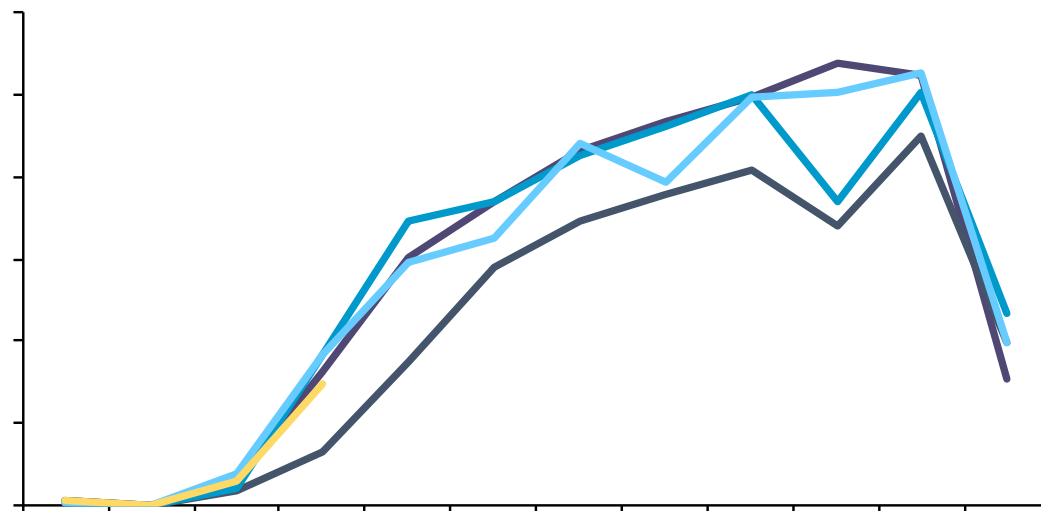
✓

✓

2023 4 2.75

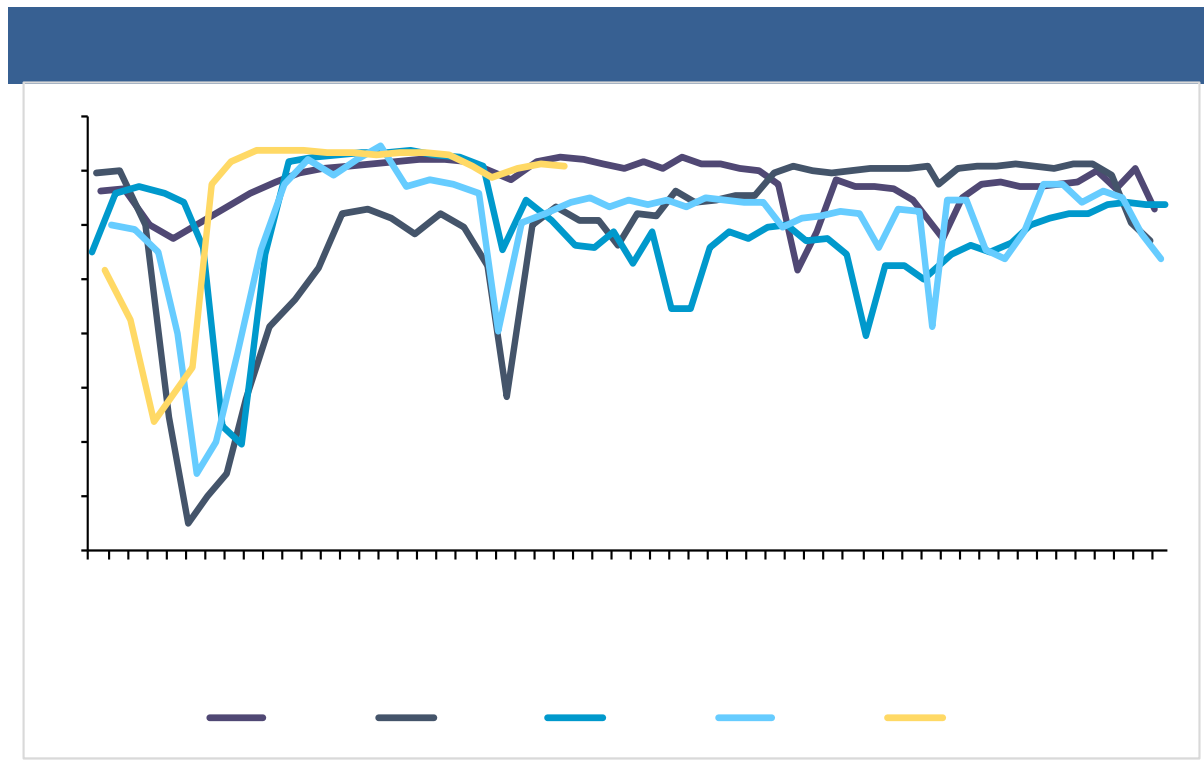
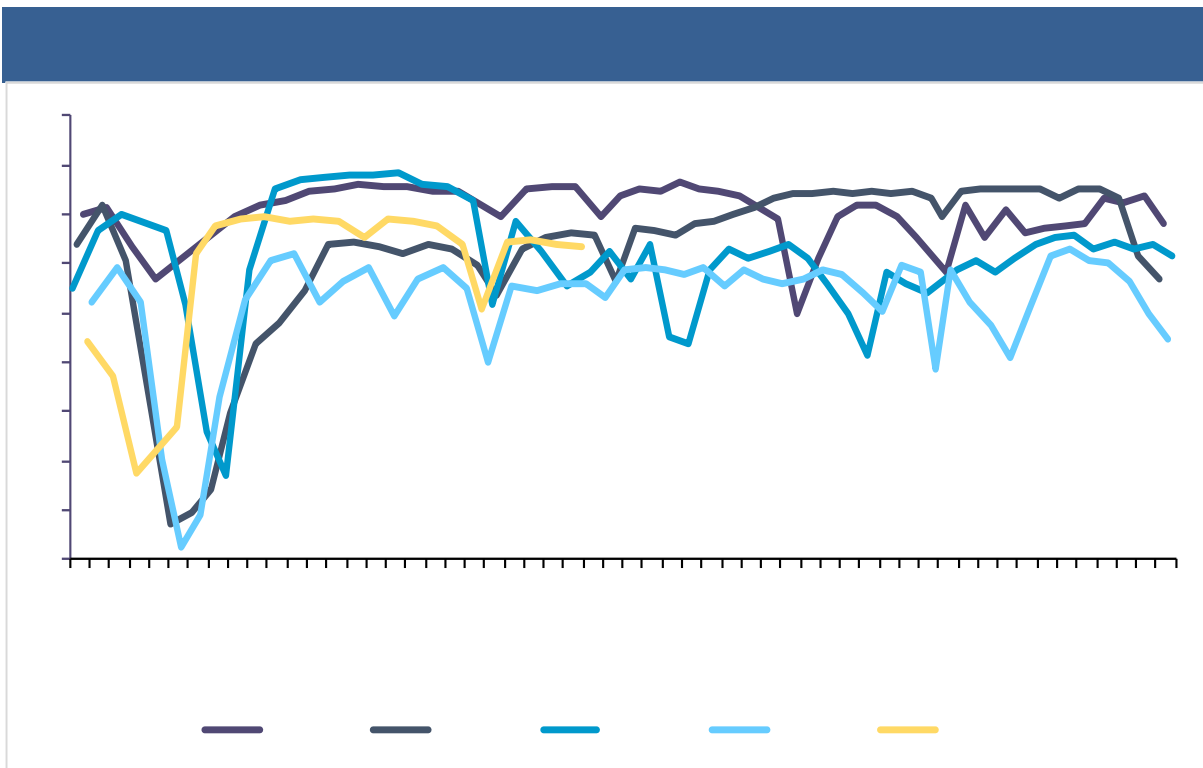


4 7.41%

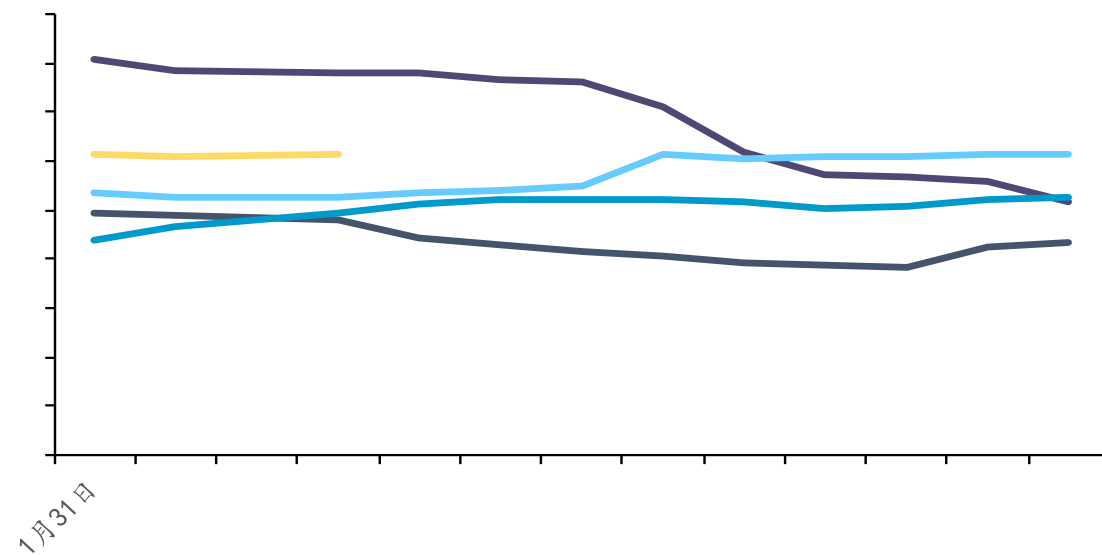
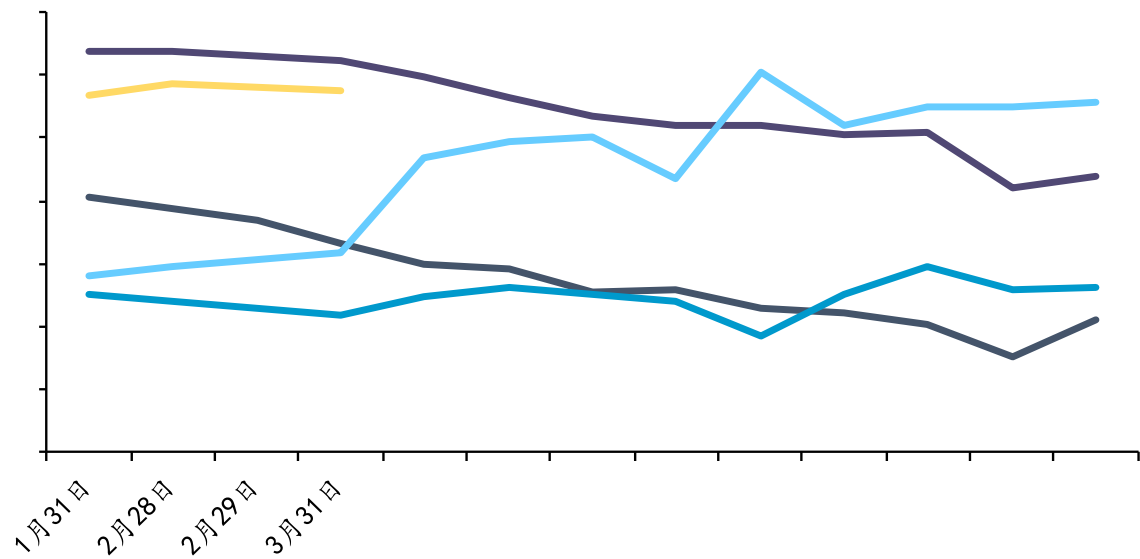




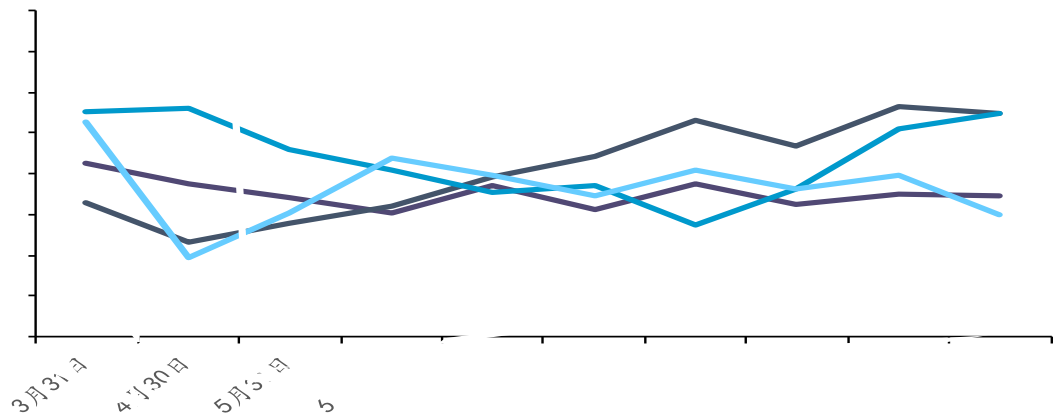
- ✓
- ✓
- ✓
- ✓



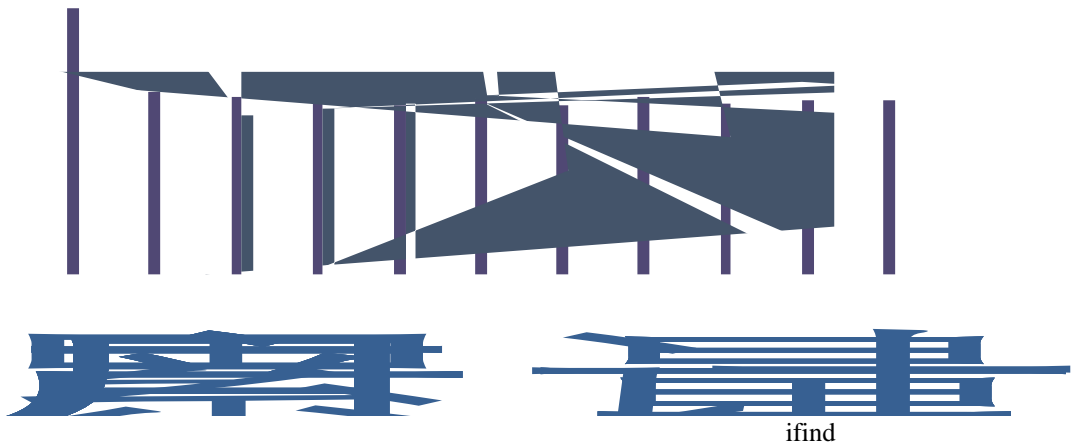
✓  
✓  
✓



4 8526.90 +31.78%

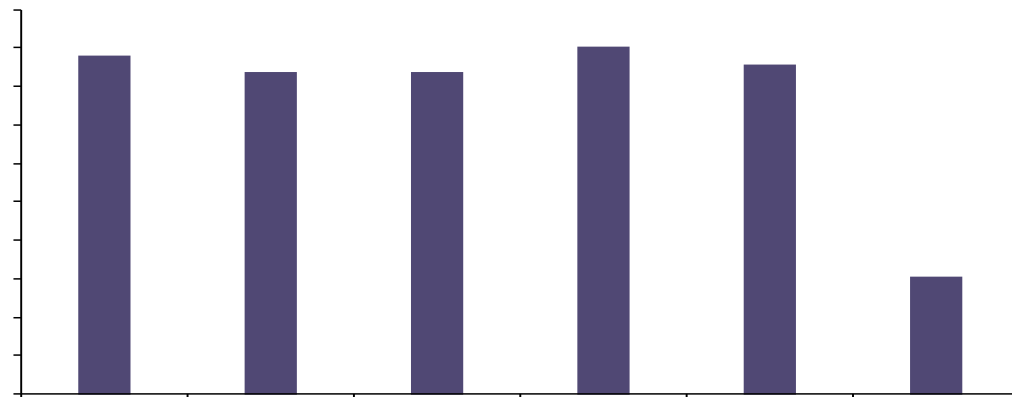


2023 1-4 30526.9 +13%



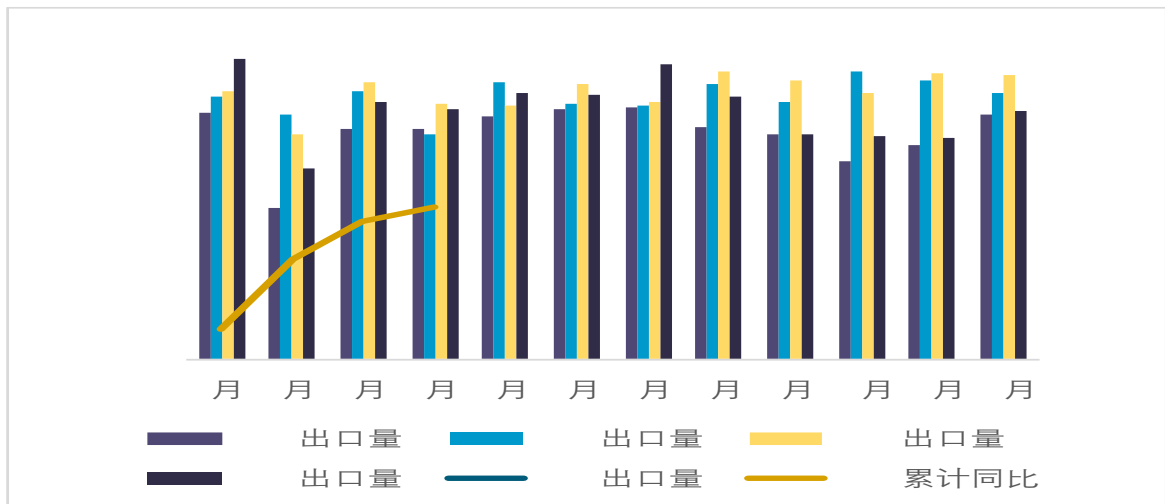
2022 85781.8

橡胶轮胎外胎产量 (年 万条)

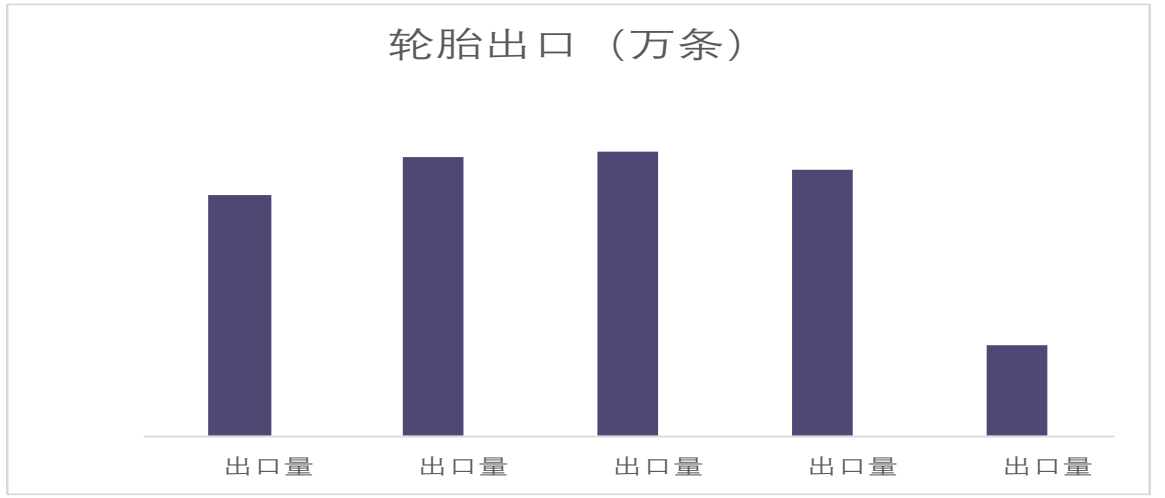


- ✓
- ✓
- ✓

4 5070 -4.30% +9.79%

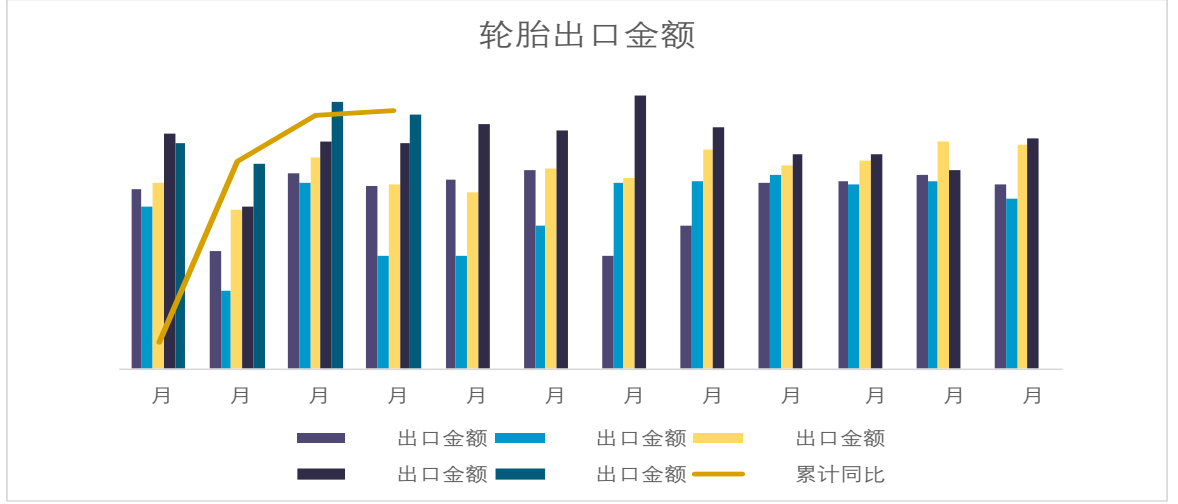


1-4 18977 +3.24%



ifind

1-4 66.46 +12.07%

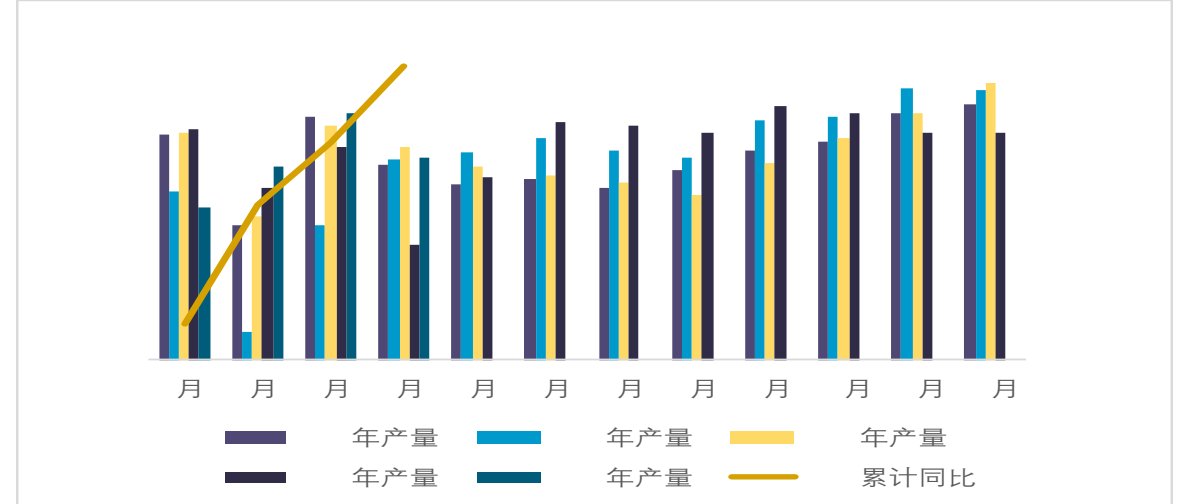


- ✓
- ✓
- ✓
- ✓



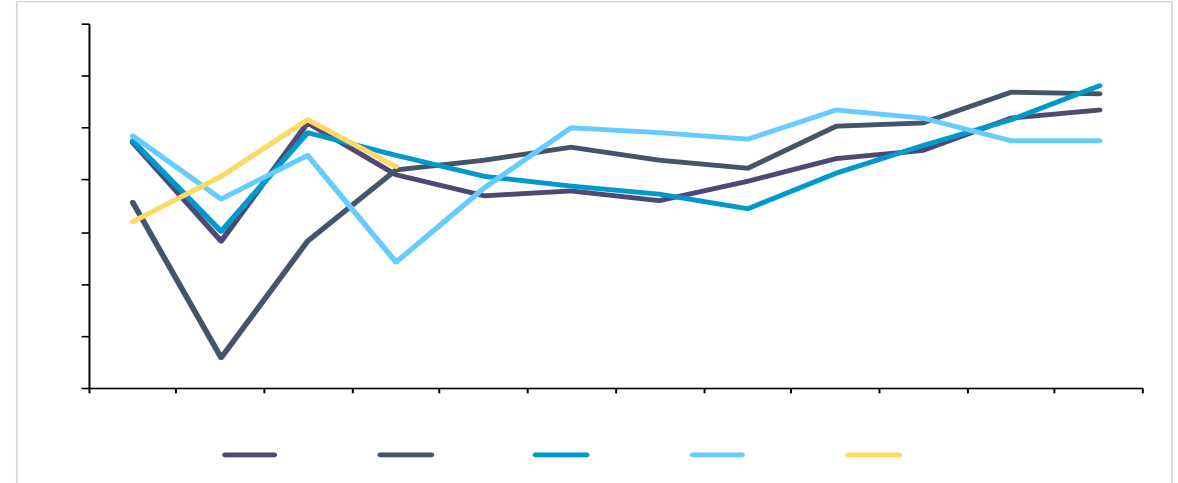
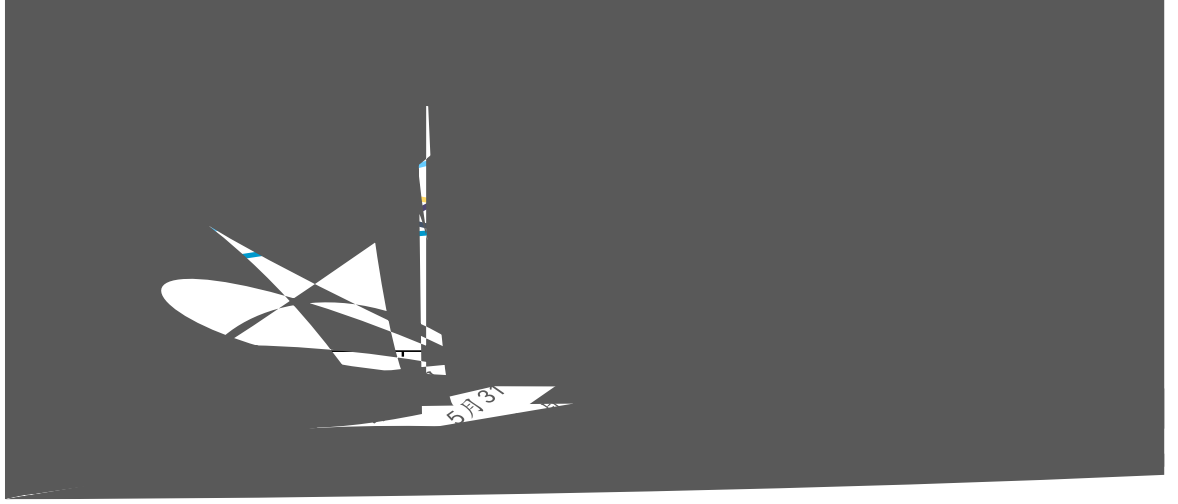


4      215.90      -11.91%      +82.83%



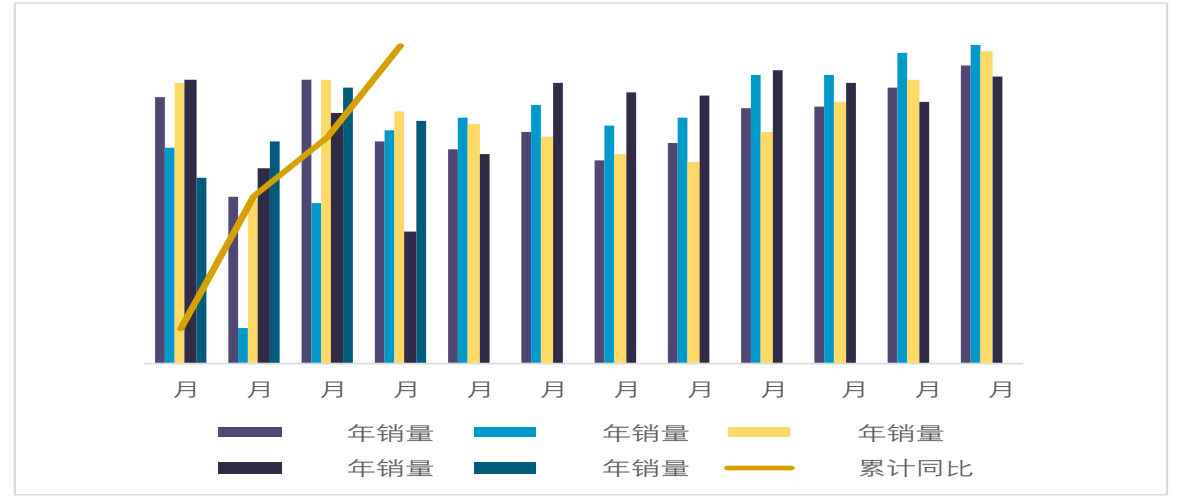
55.40%      -5%      -1.4%

5

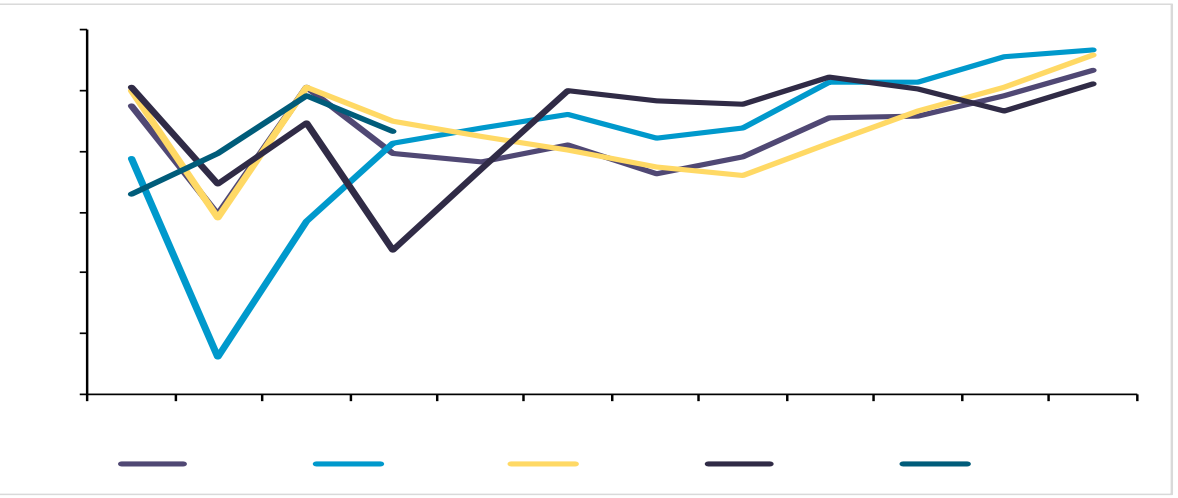


- ✓
- ✓
- ✓

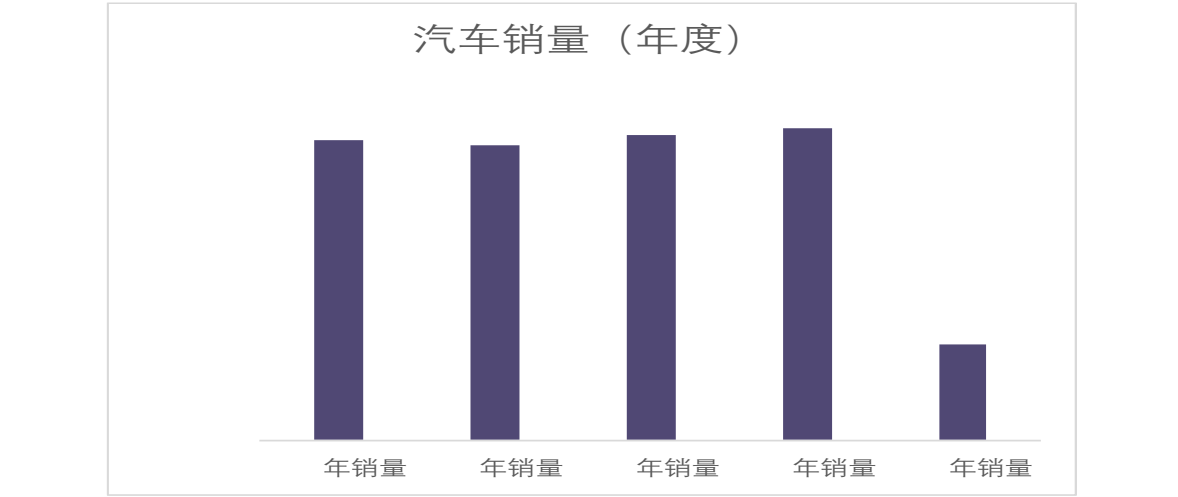
4 215.90 -11.91% +82.83%



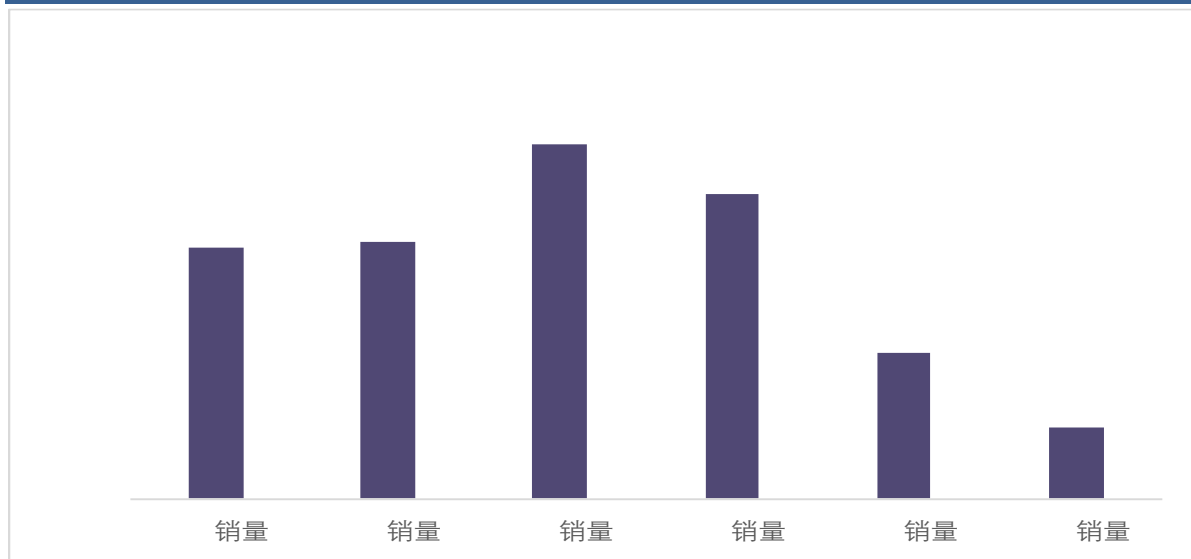
ifind



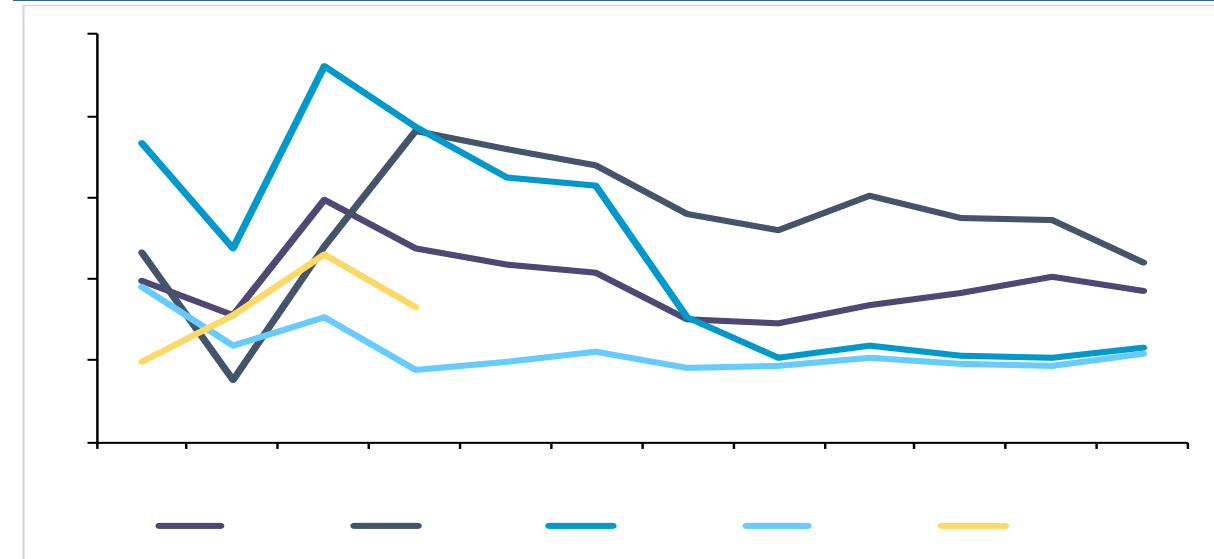
2023 1-4 823.50 +7.19%



2022 67.11 -51.84%



5 7 -16% +42%



✓ 5 7 4 16%  
39.5 21% 3

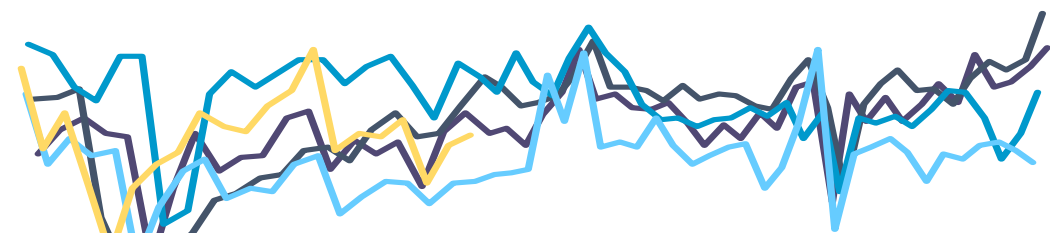
✓ 5 7 2022 5 2017-2021 5

✓ —

ifind

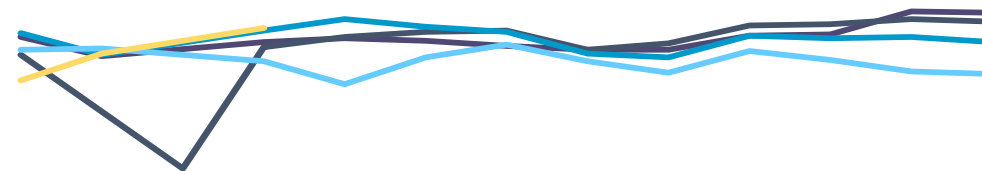
&

30



年 年 年 年 年

5 51.50 -2.3



- ✓
- ✓
- ✓
- ✓
- ✓

ifind



021-68905325 12 15 03 69 1	0571-89809624 2 1301 111	028-83279757 12 6 802 4	021-50568018 899 1201-1202
0757-88772666 28 2 2301 2302	0755-83533302 A 704A 705	0757-88772888	0769-22900598 1501B 2
020-31953184	0763-3808515	0758-2270761	020-61887585 8 803B 171
010-63360528	027-59219121 A 14 1401-9 193	0531-66671202	0371-86533821 80 1 2 23 2301
0532-88697833	020-22836158 6 1	020-22836155 6 1	020-22836182 6 1
020-22836185 6 1	021-50390265 388 701		

