



■ :

- ✓
- ✓
- ✓
- ✓
- ✓
- ✓

■

- ✓

✓ &



 01

 02

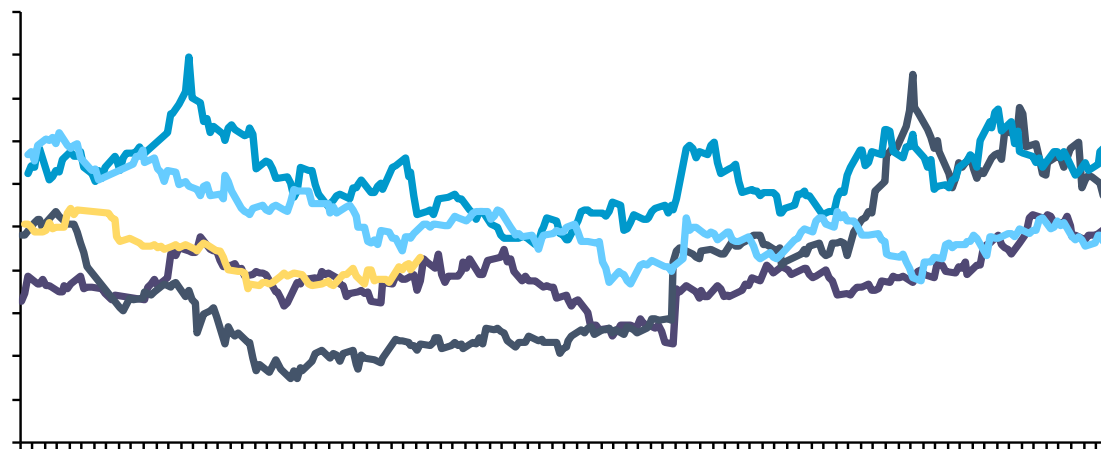
 03

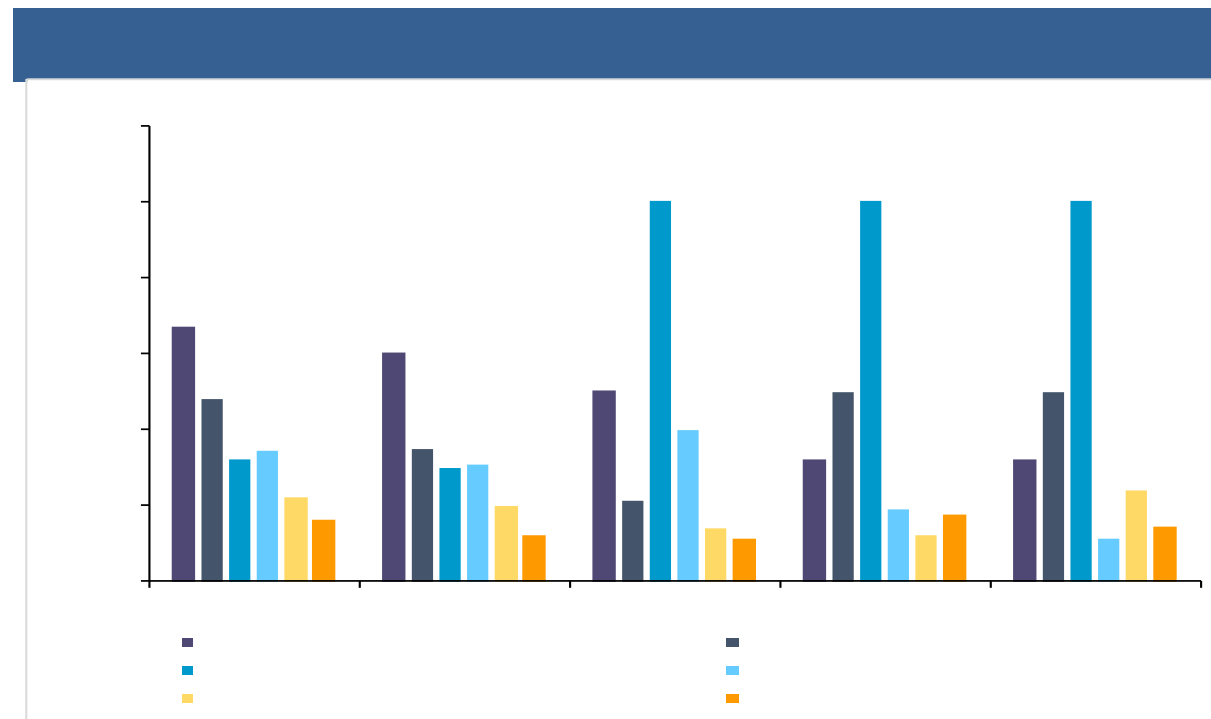
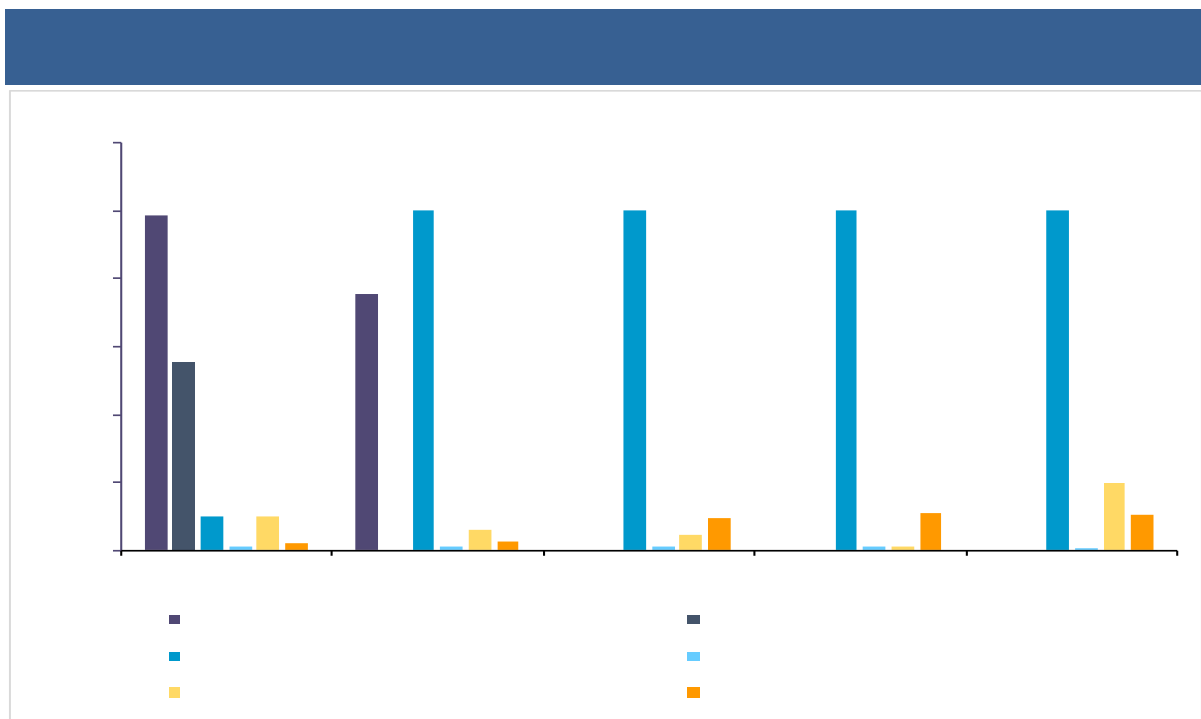


2023/8/2

11975 /

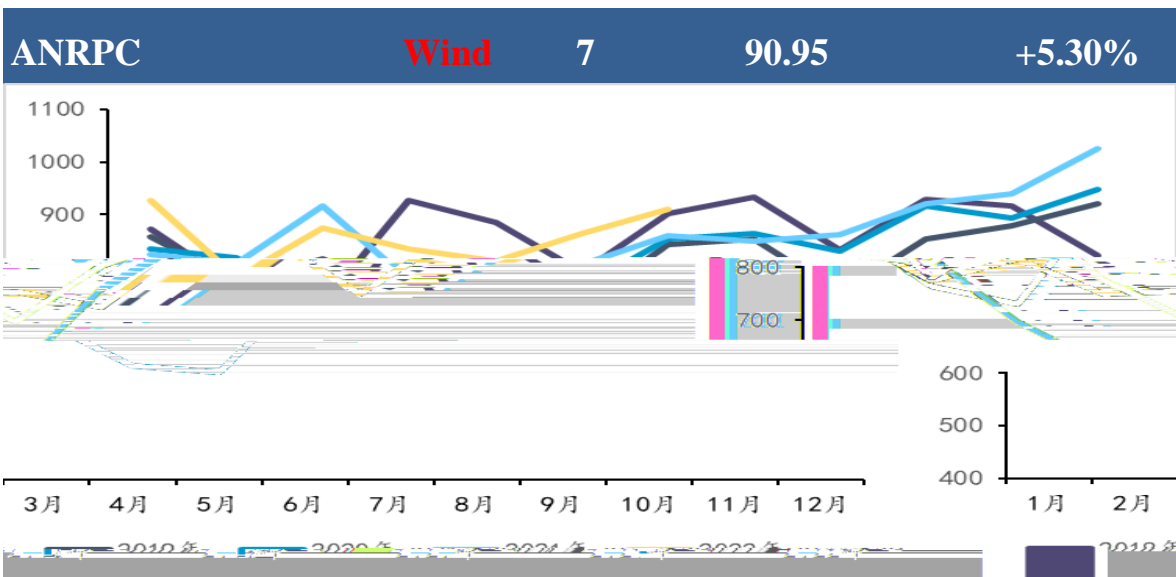
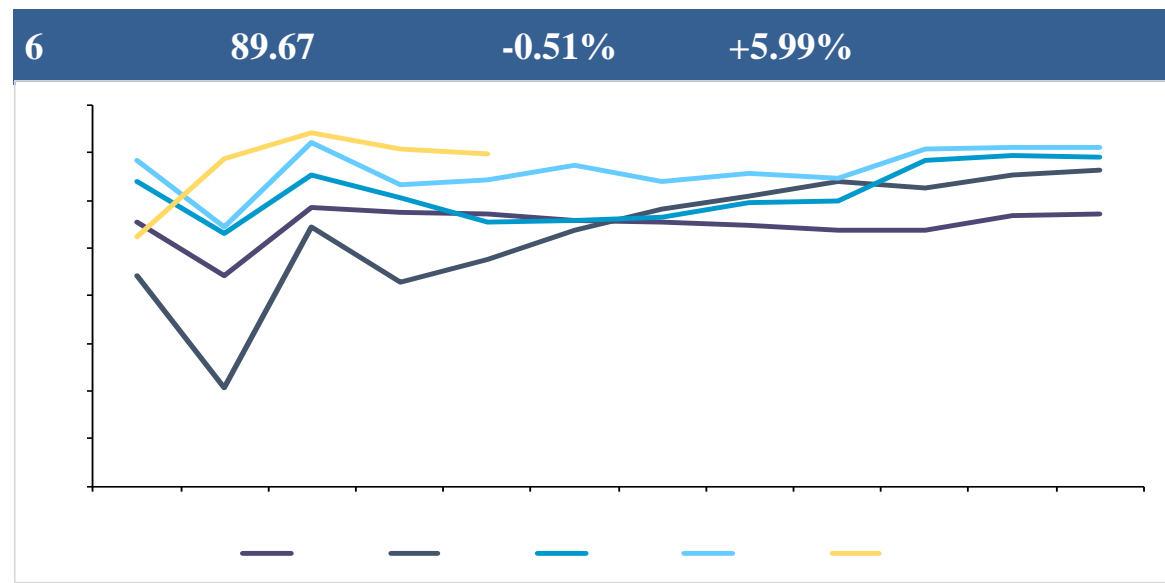
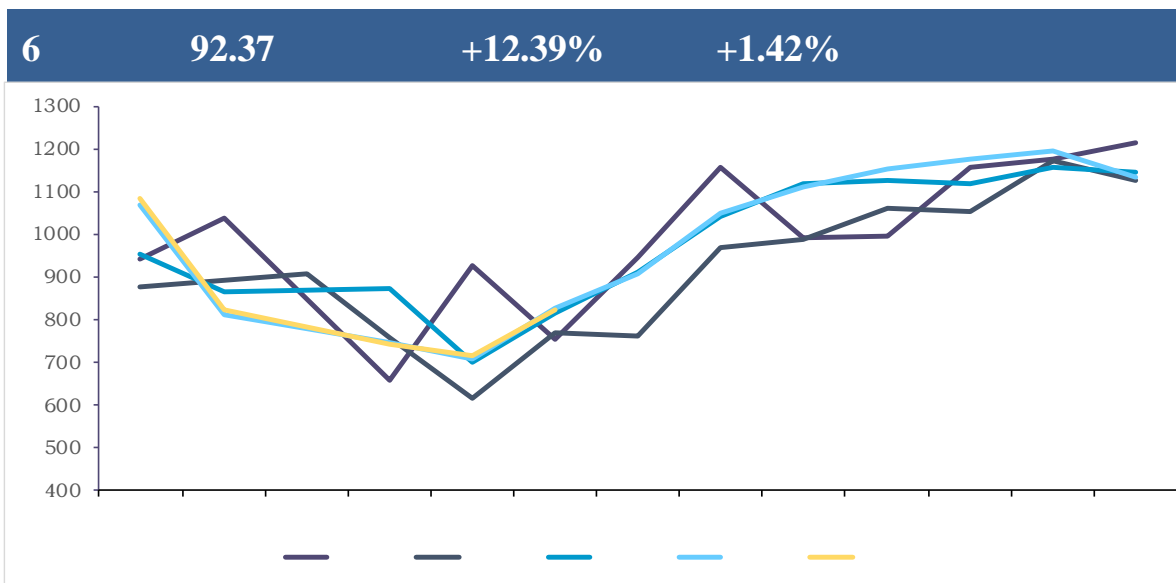
-1.88%





ifind

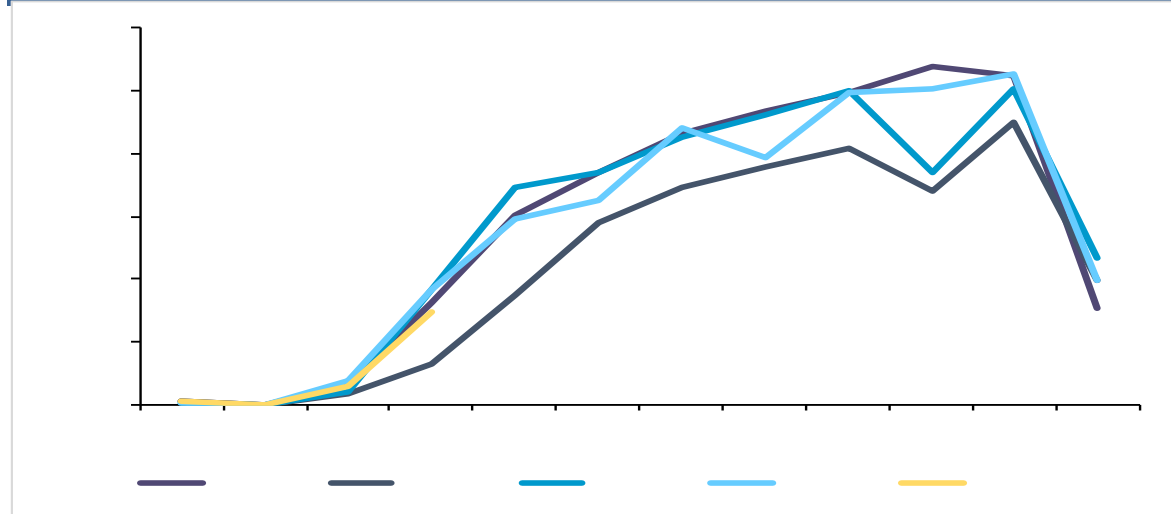
- 
- ✓
- ✓
- ✓



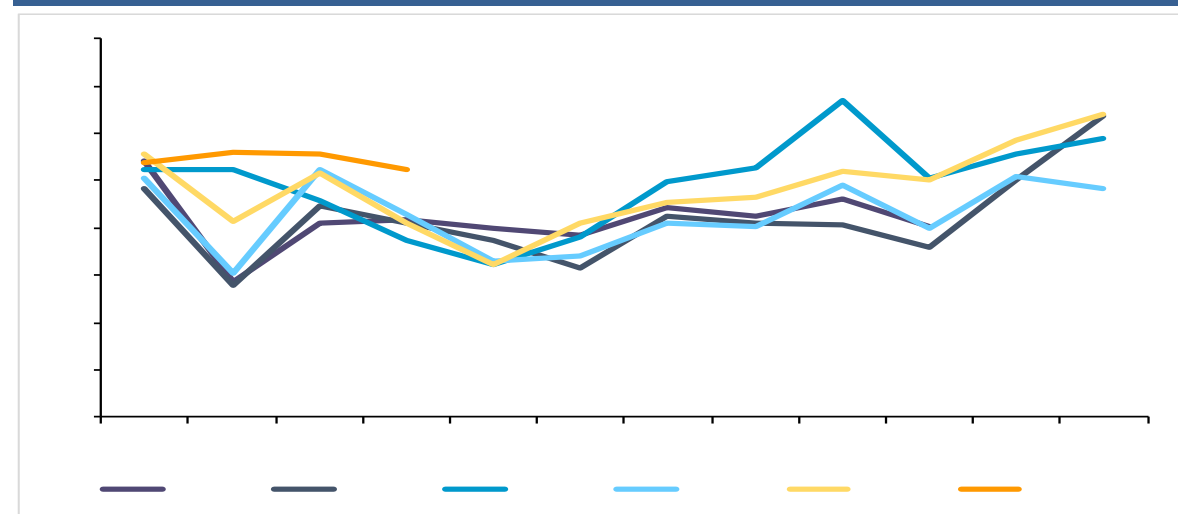
☐

- ✓
- ✓
- ✓

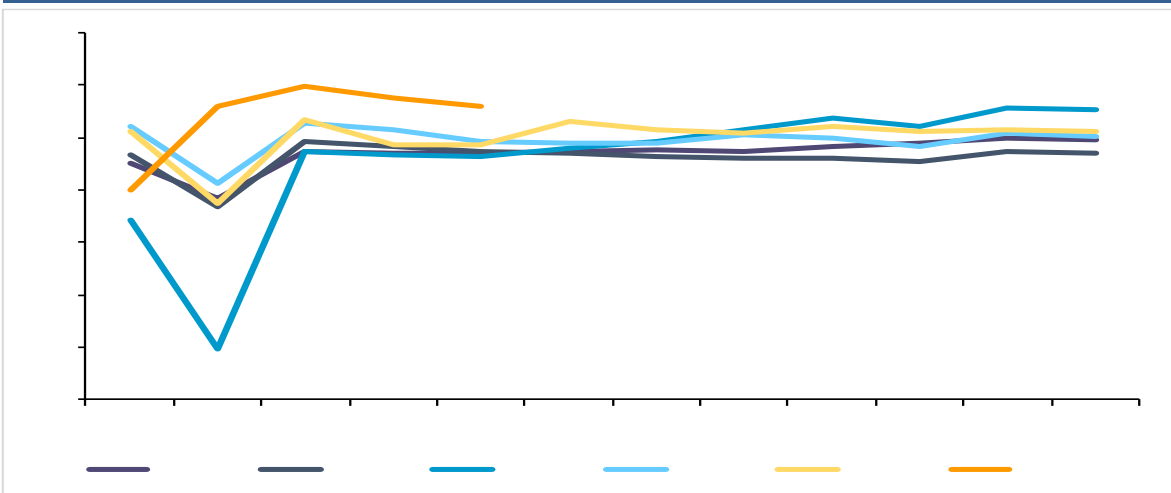
5      64000      +62.44%      -11.60%



5      4400      +7.32%      -10.20%



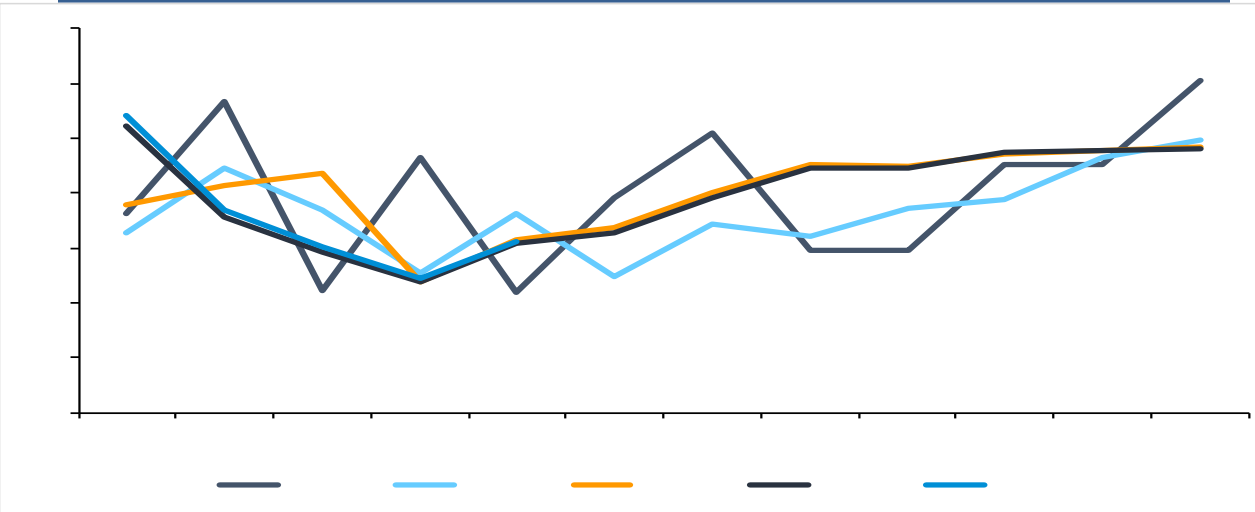
5      56      -2.78%      +14.85%



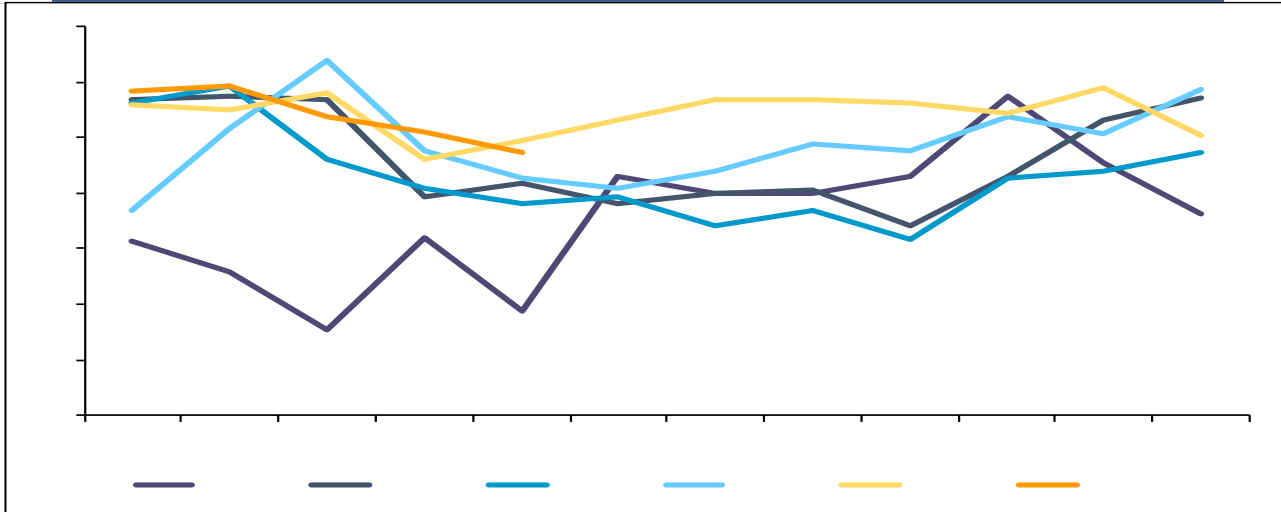
- ✓
- ✓
- ✓



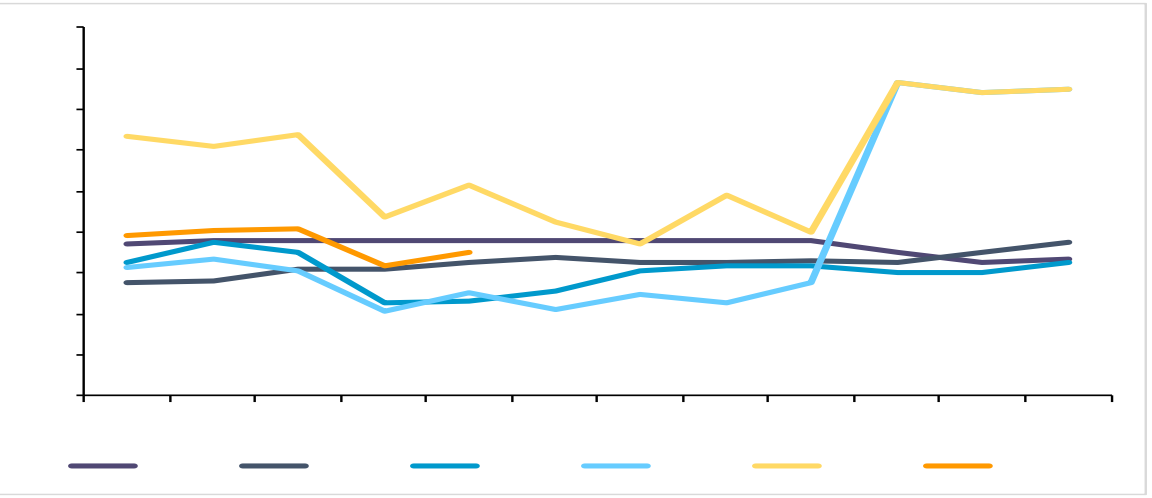
5 31.16 +1.63% -7.75%



5 33.64 -5.40% -3.36%



5 7.04 +10.52% -31.58%



✓

✓

✓

5	24.16	+1.77%	-7.75%
---	-------	--------	--------

4	20	-2.58%	+5.26%
---	----	--------	--------

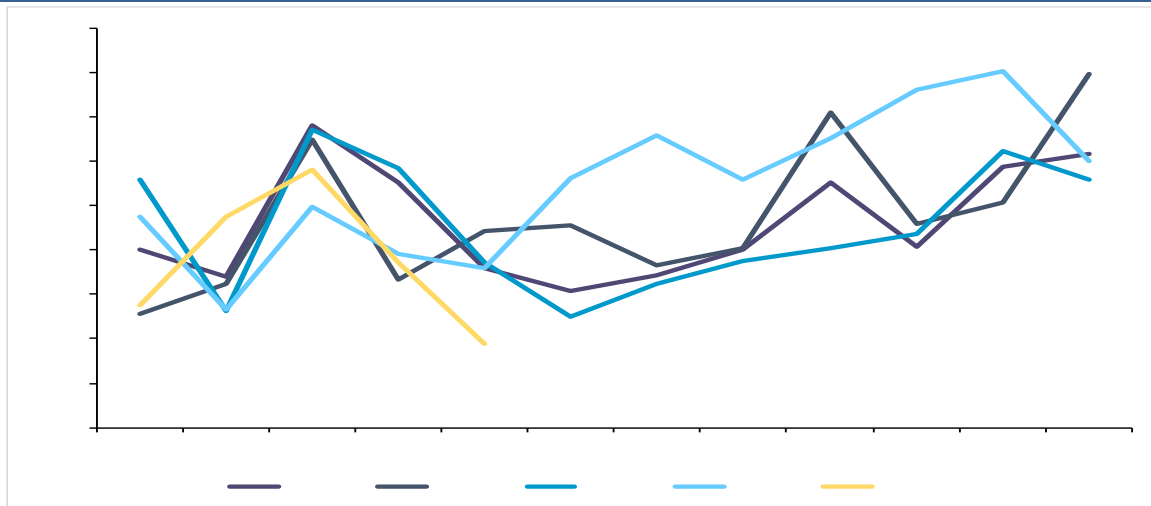
5	4.76	-12.50%	+3.25%
---	------	---------	--------

✓

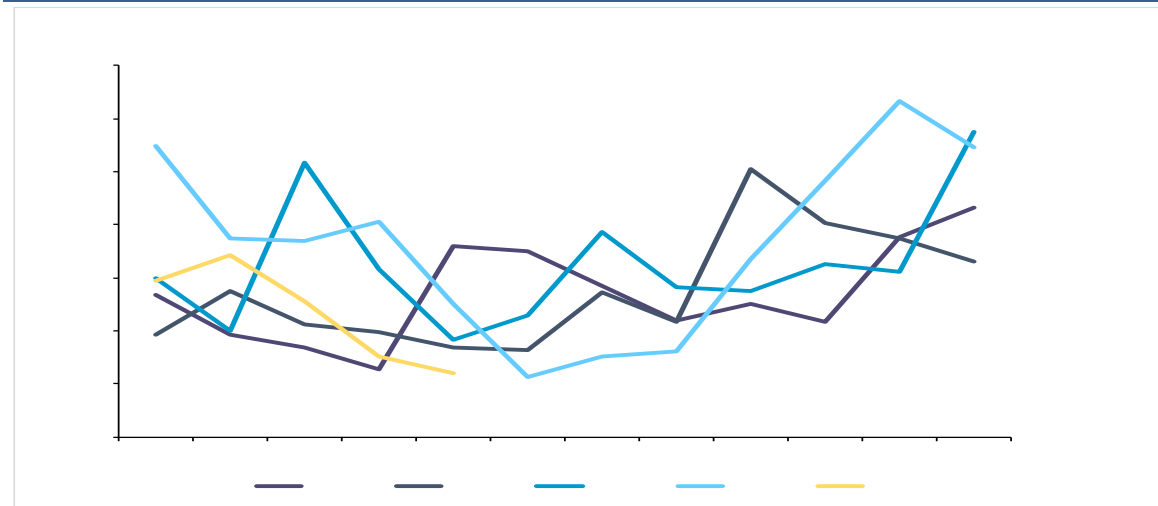
✓

✓

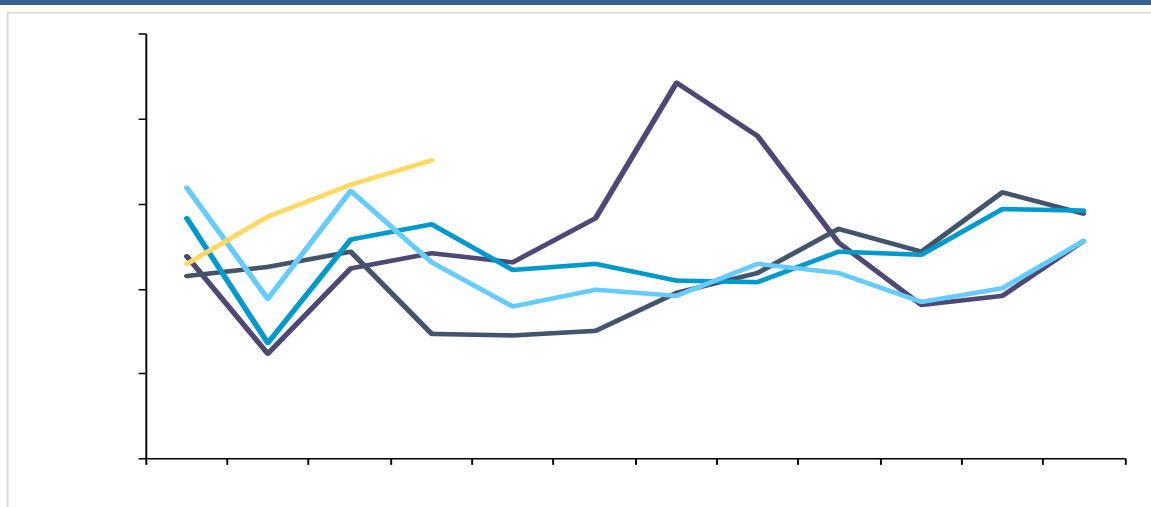
2023 1-5 18.93 +31.69%



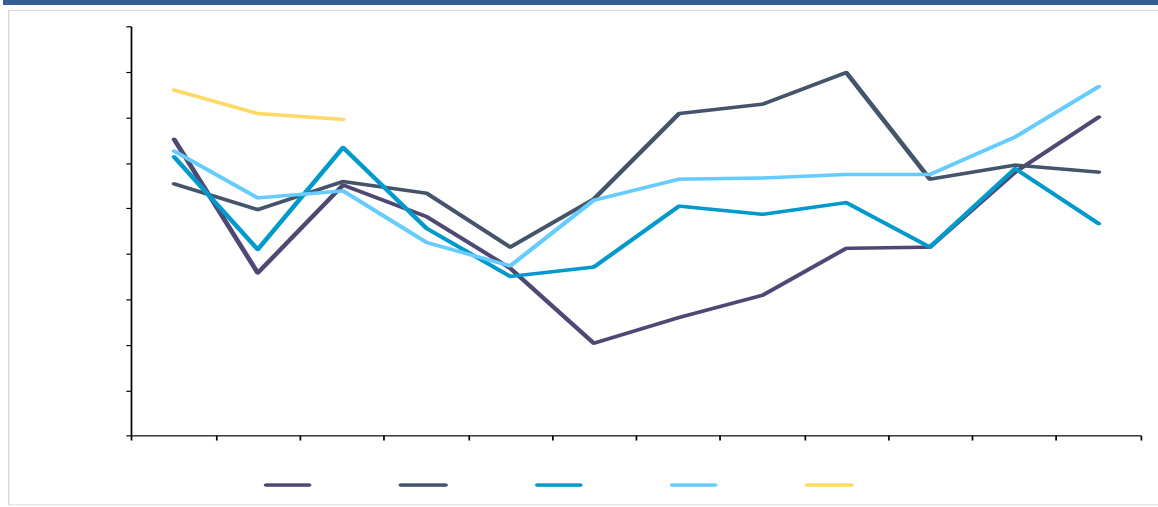
2023 1-5 5.80 -31.42%



2023 1-5 77.17 +79%



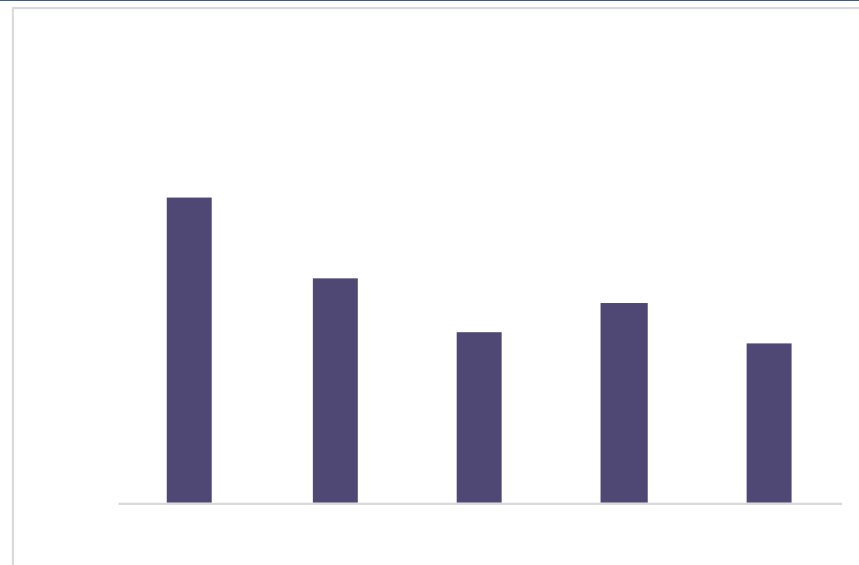
2023 1-5 141.91 +96%



2023 1-5

15000

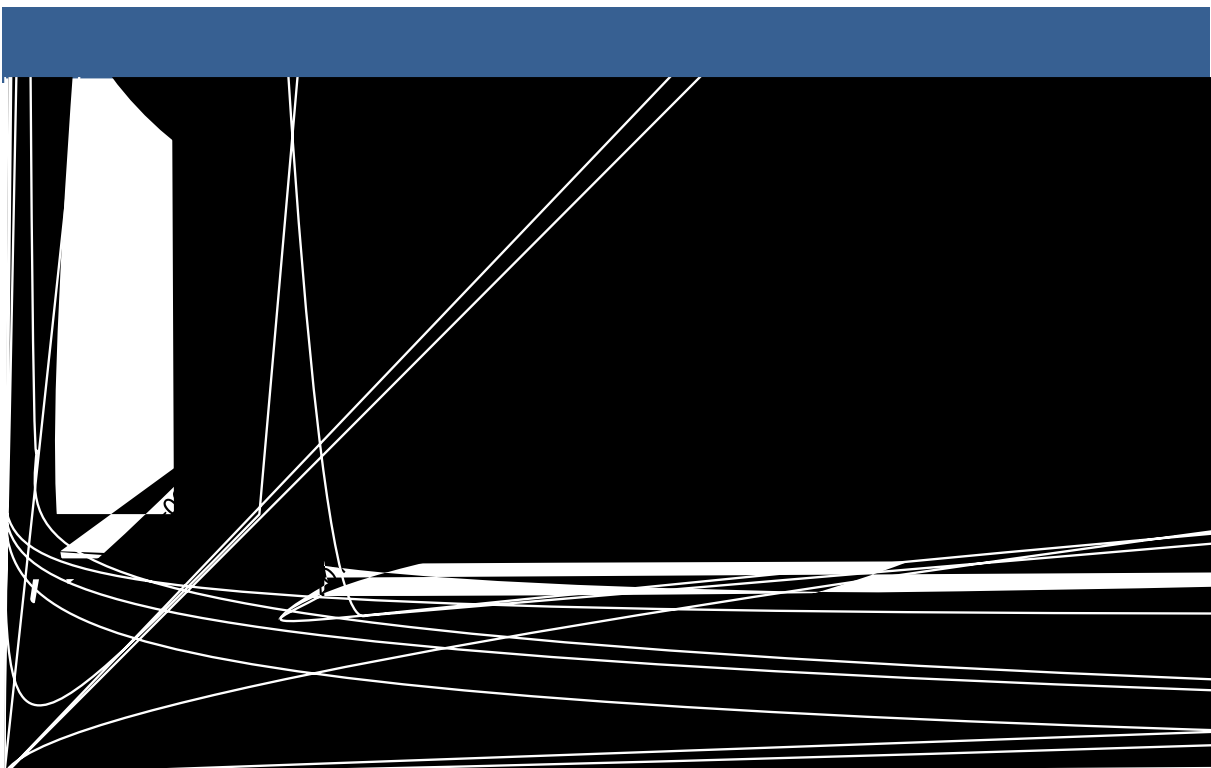
-55.60%



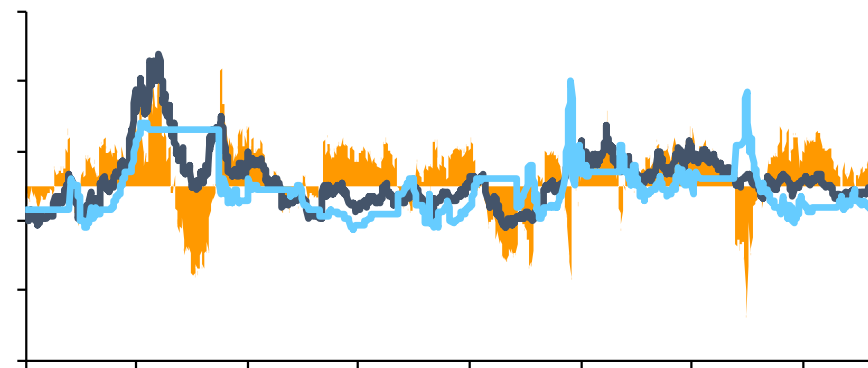
ifind

✓

- ✓
- ✓
- ✓
- ✓



RU

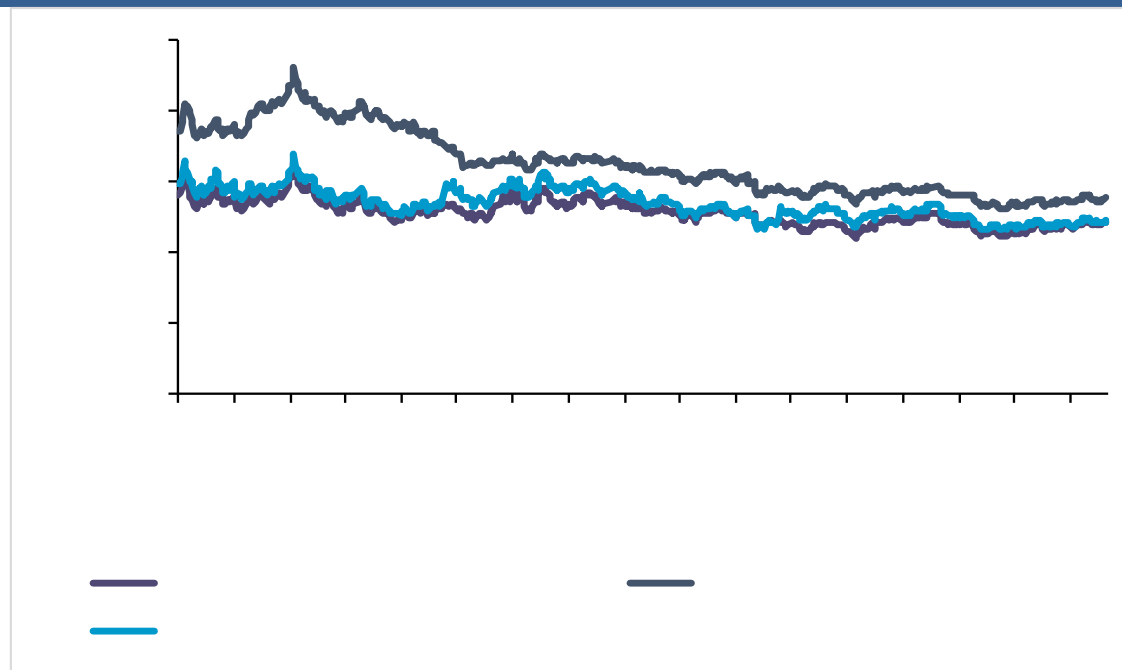


20

20

20

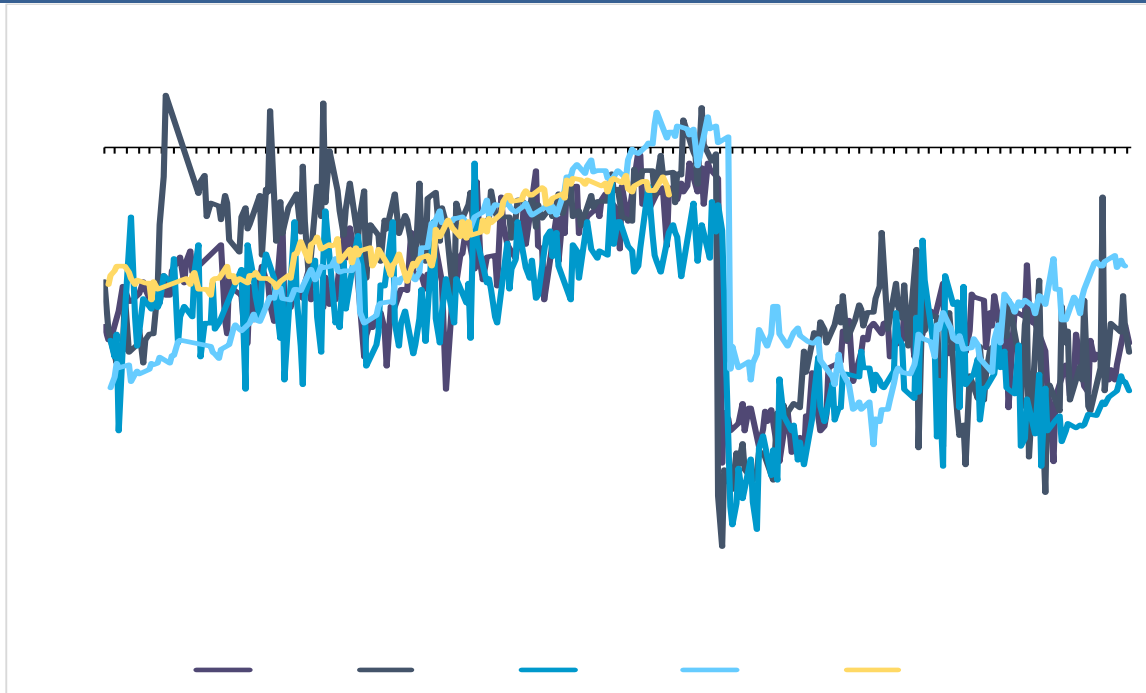
✓



ifind

✓





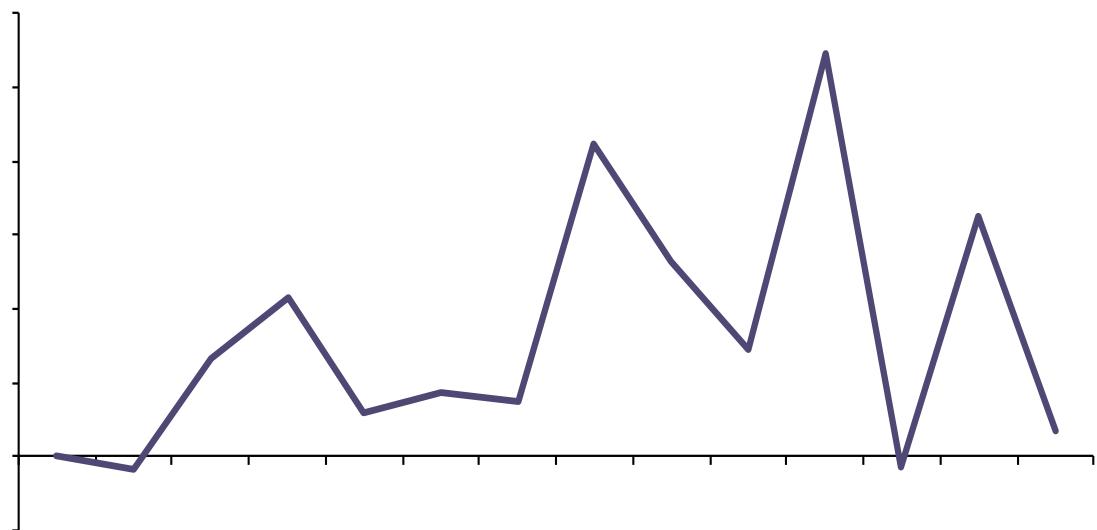
ifind

✓

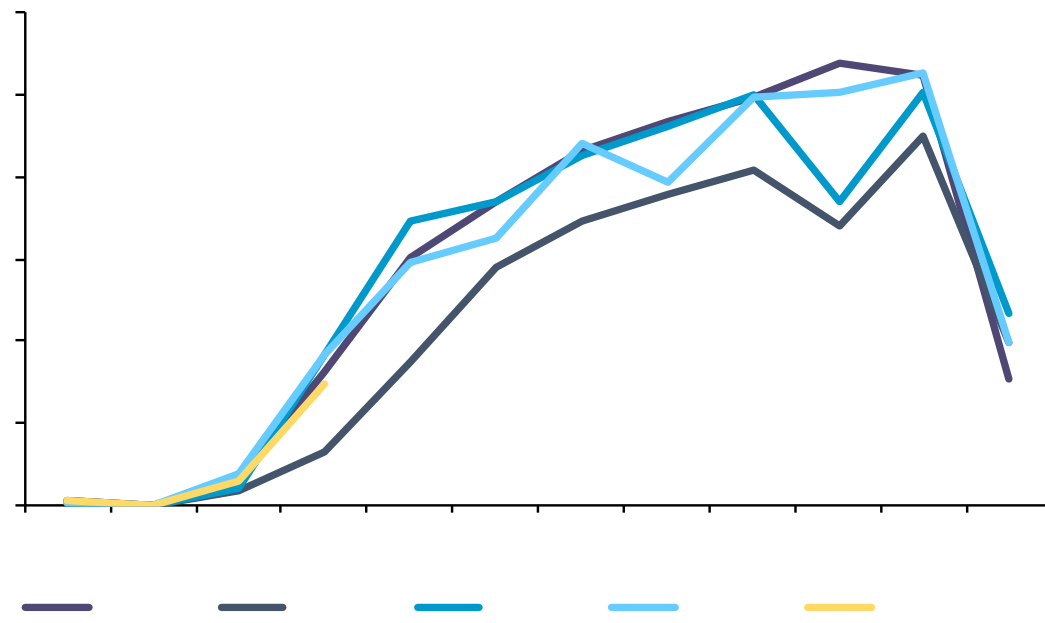
✓

✓

2023 6 18200

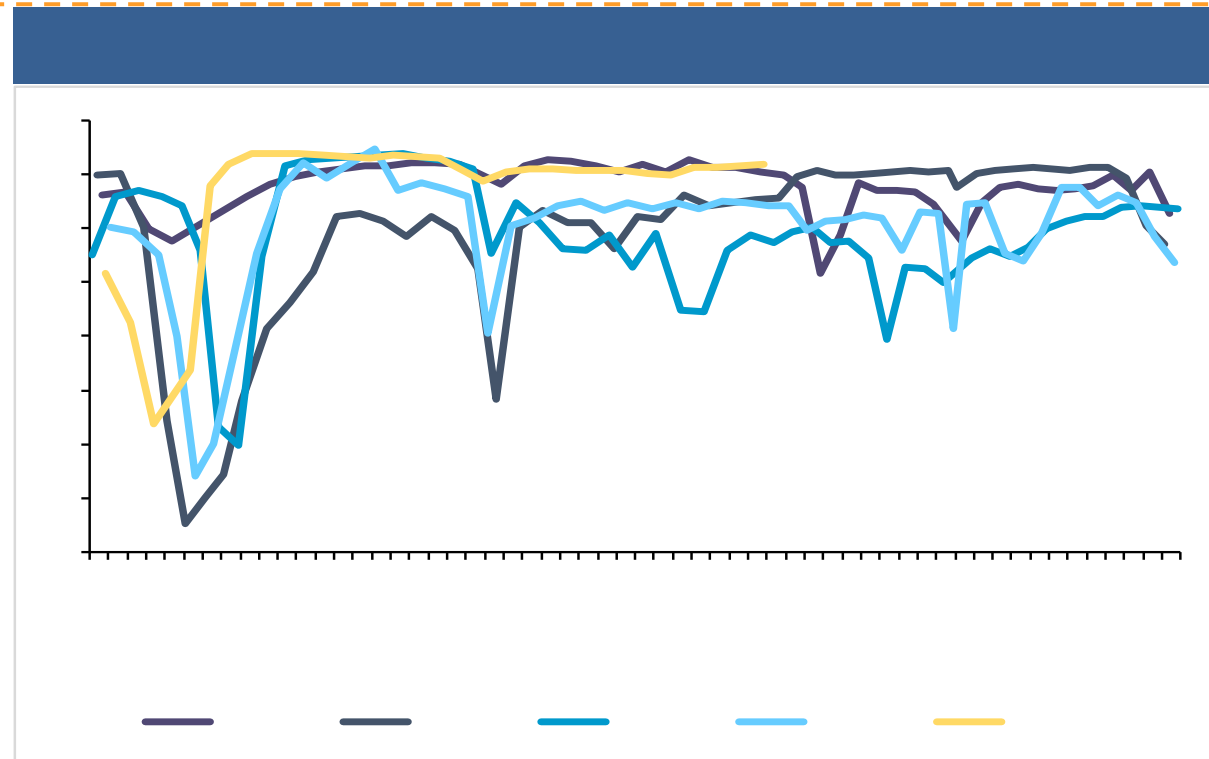
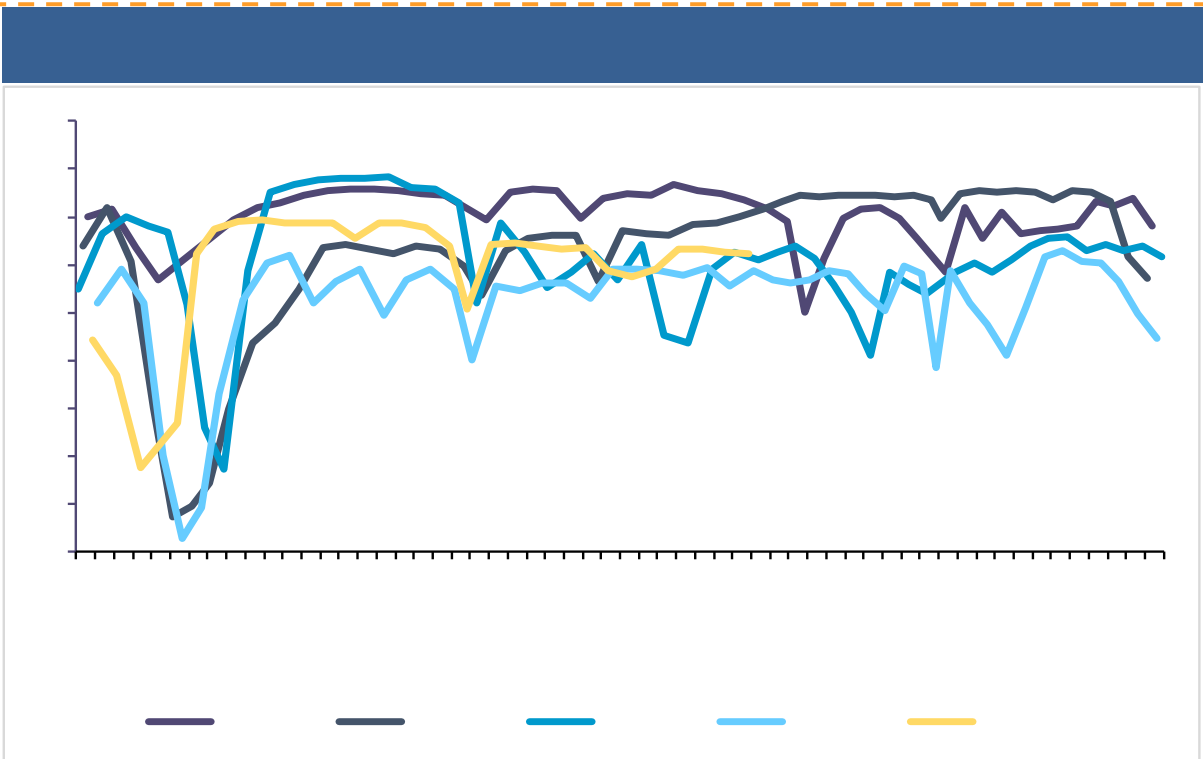


6 15.66%





- ✓
- ✓
- ✓
- ✓

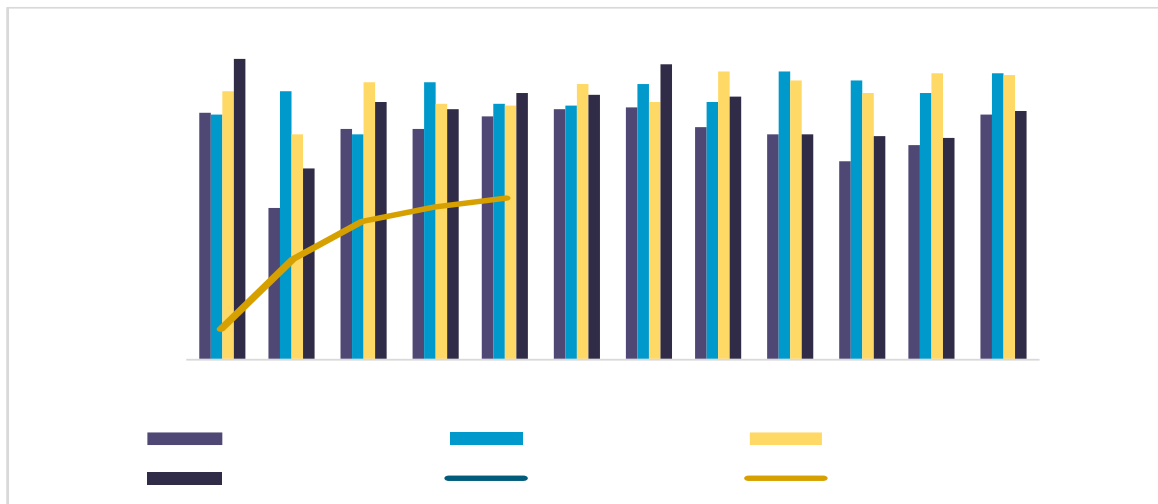


✓

✓



6 5669 +5.33% +16.45%

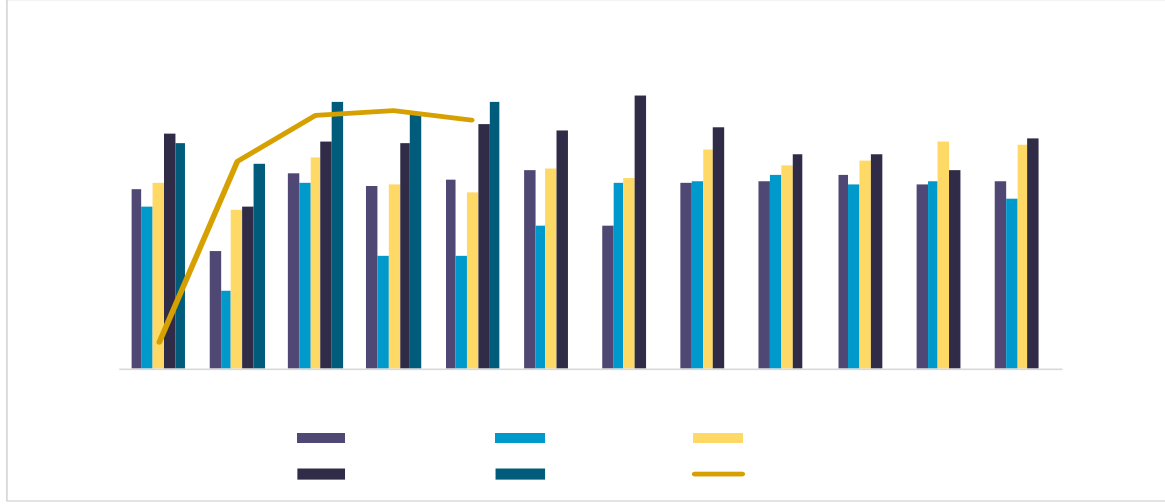


1-6 30028 +6.73%



ifind

1-6 104.80 +12.63%

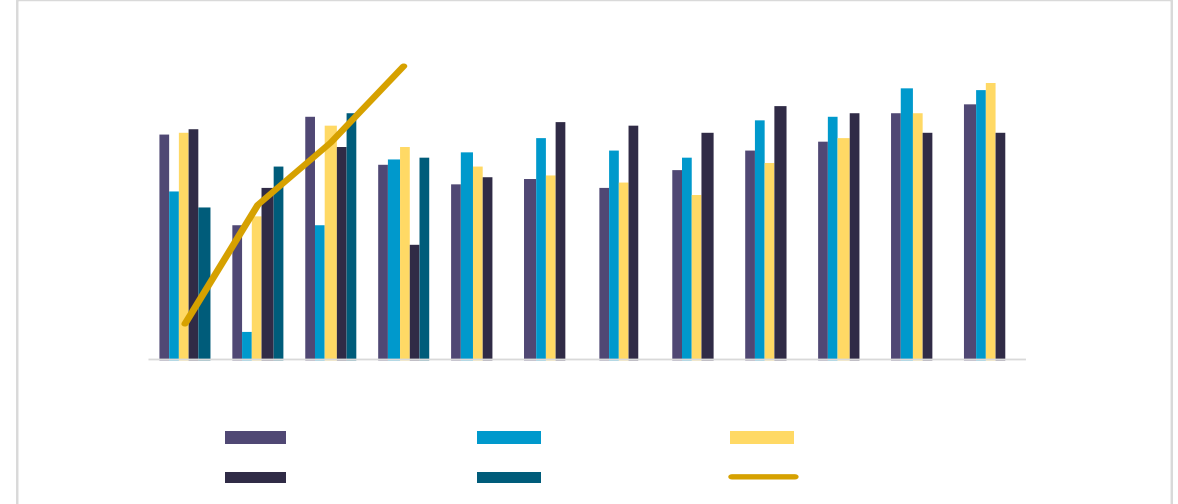


- ✓
- ✓
- ✓
- ✓

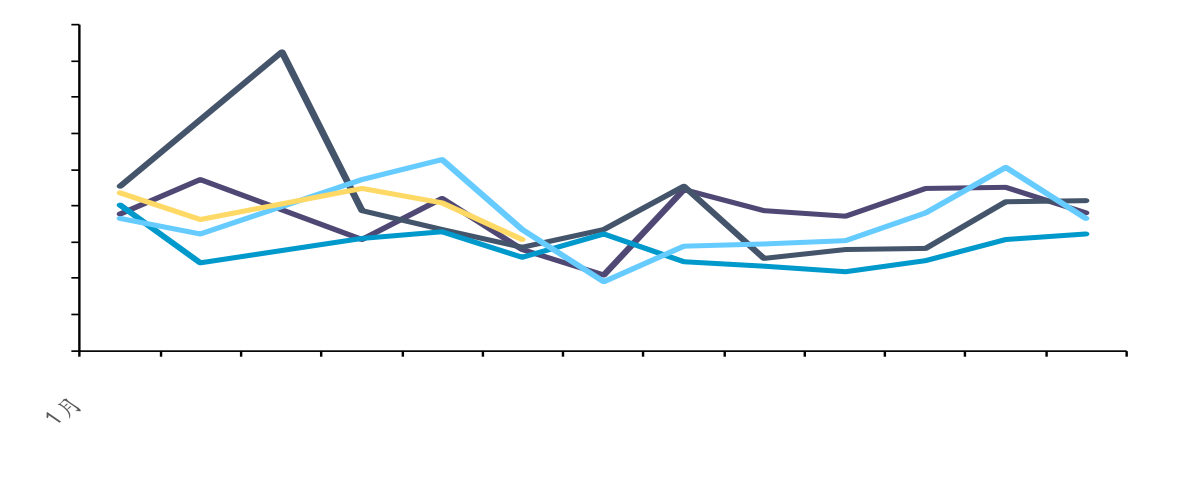




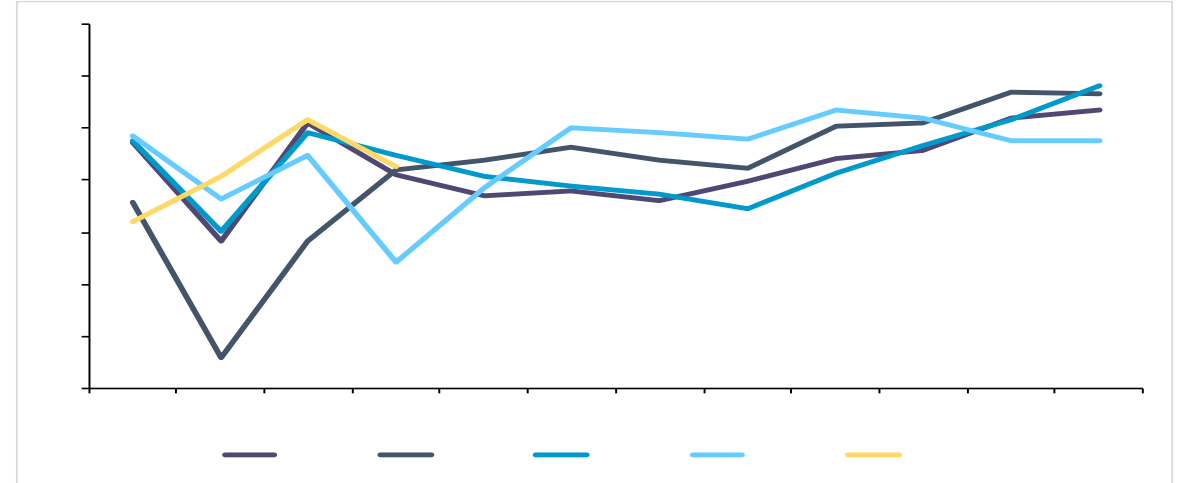
6 256.10 +9.77% +2.47%



6 54% 1.4

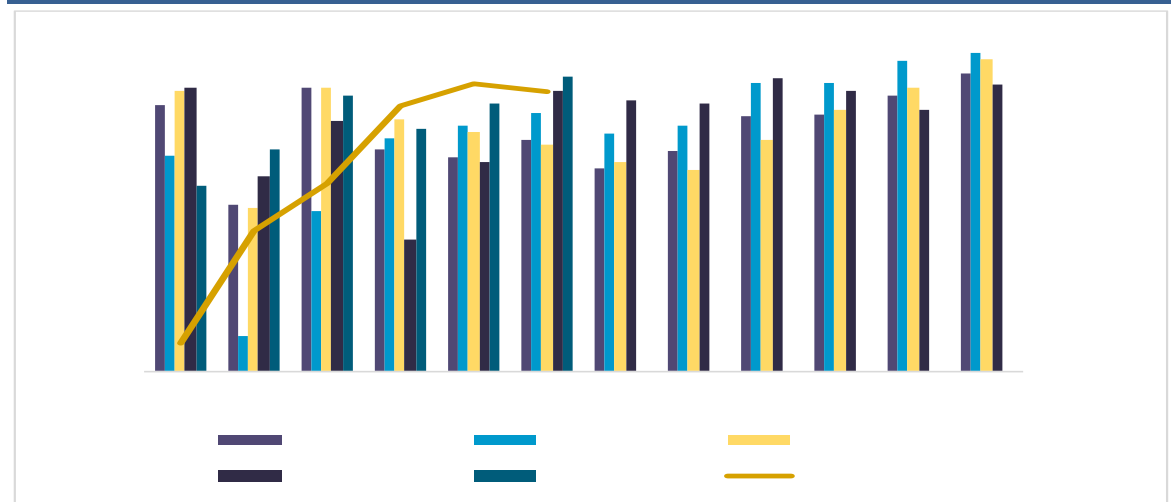


Dark blue header bar



- ✓
- ✓
- ✓
- ✓

6 262.20 +10.08% +4.78%



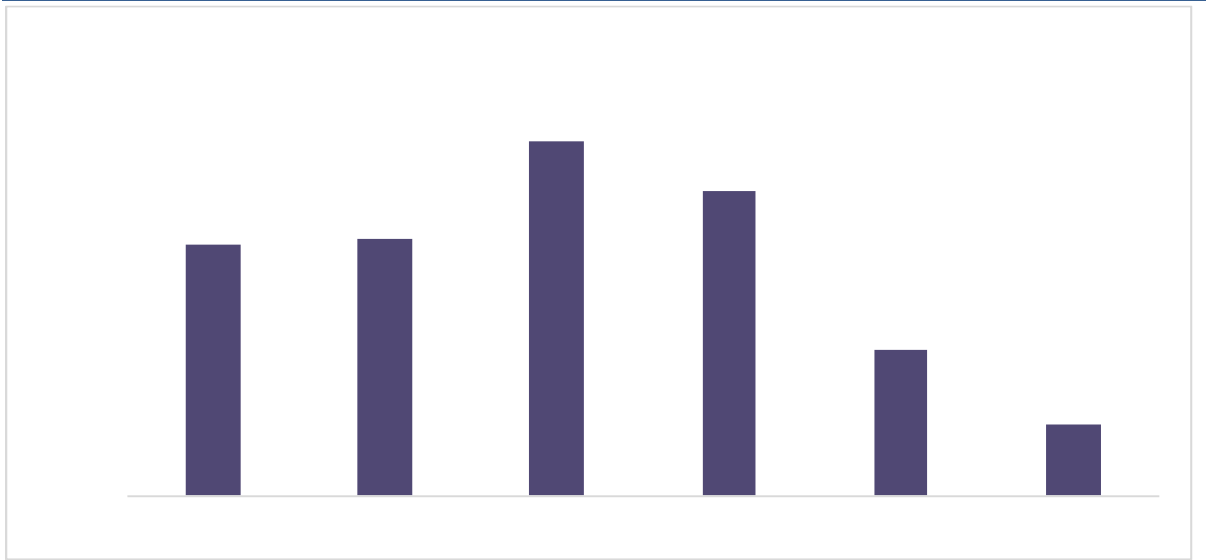
1-6 1323.90 +9.89%



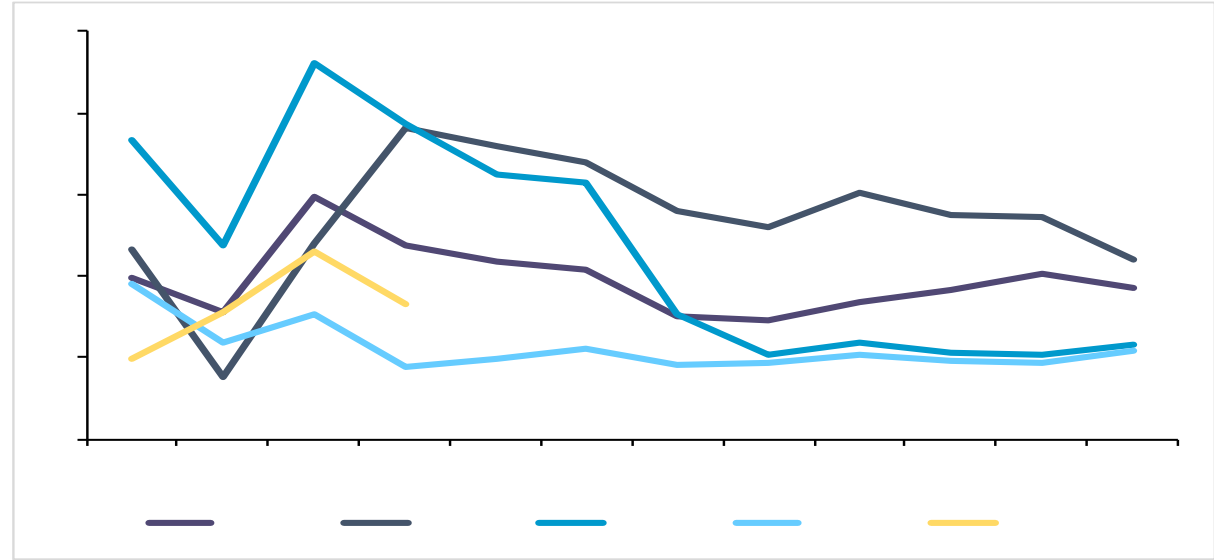
- ✓
- ✓
- ✓

3%

1-6    48.83    +28.81%



5    7.74    -6.86%    +40.98%

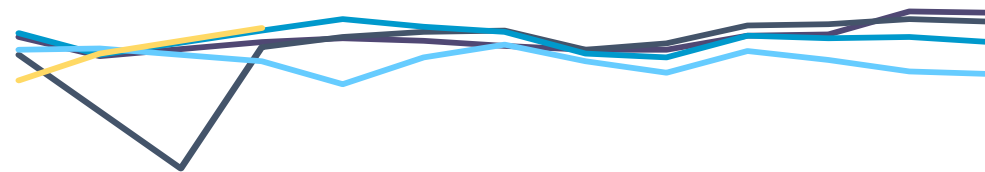


✓ 6	8.65	+11.76%	+56.99%	1-6	48.83	28.81%	ifind
✓ 6	8.65			2022 5	2017-2021 5		
✓				1-5	4.0%	4.7%	

&

30

5 51.50 -2.3



1

- ✓
- ✓
- ✓
- ✓
- ✓

2012 1497

Z0016940

同				同			
12	021-68905325 丰 华 69 1 15 03	0571-89809624 庆 华 111 2 1301		12 6 802	028-83279757 华 4	21-50568018 华 丰	
丰 华 同				同		丰	
28	0757-88772666 丰 华 2 2301 2302	0755-83533302 丰 华 华 A 704A 705		0757-88772888 华	0769-22900598 丰 丰 2 1501B	同	
同		同		丰 同		同	
	020-31953184 华	0763-3808515 丰		0758-2270761 华	020-61887585 华 171 8 803B	同	
同		同		丰 同		同	
	010-63360528 华 写	027-59219121 华 193 A 14 1401-9		0531-66671202 丰 华 M	0371-86533821 华 华 丰 80 1 2 23 2301	同	
同		同		同		同	
	0532-88697833 丰 华 M	020-22836158 华 1 6		020-22836155 华 1 6	020-22836182 华 1 6	同	
同		同		同		同	
	020-22836185 华 1 6	021-50390265 丰 华 388 701		同			

