





■	
➤	
✓	
✓	
➤	
✓	
✓	
■	
✓	
✓	



01



02



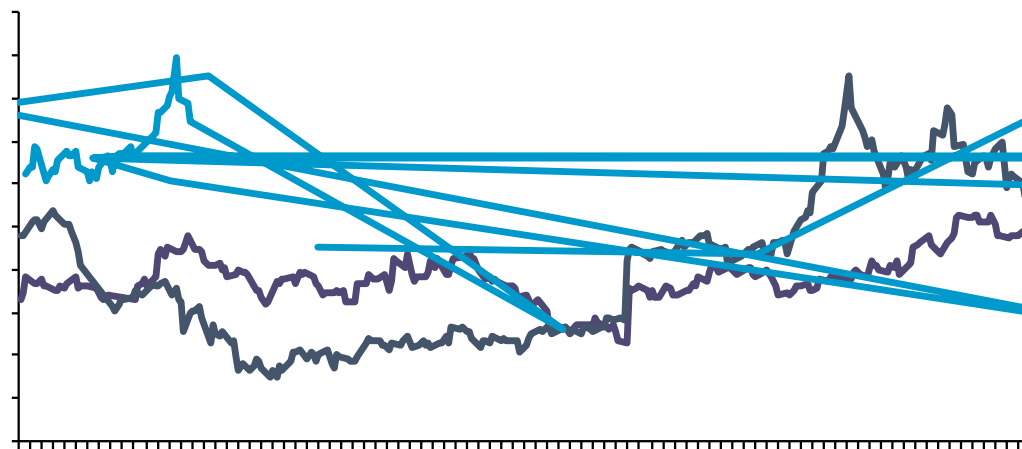
03



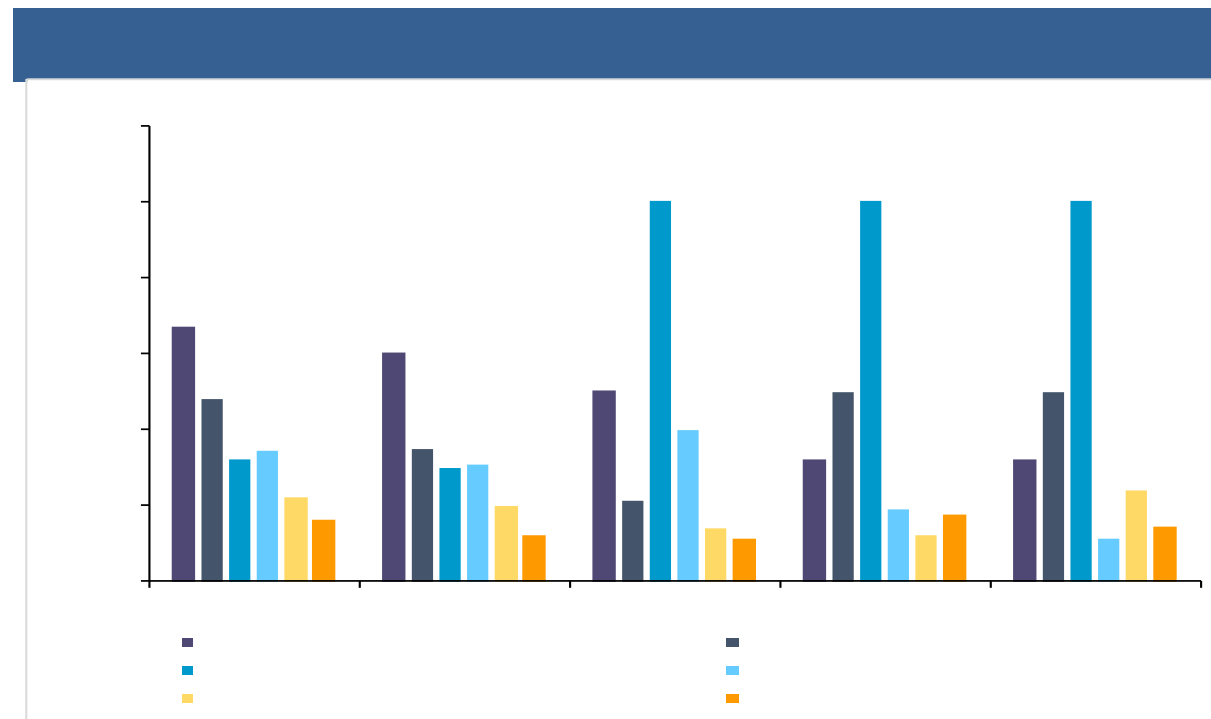
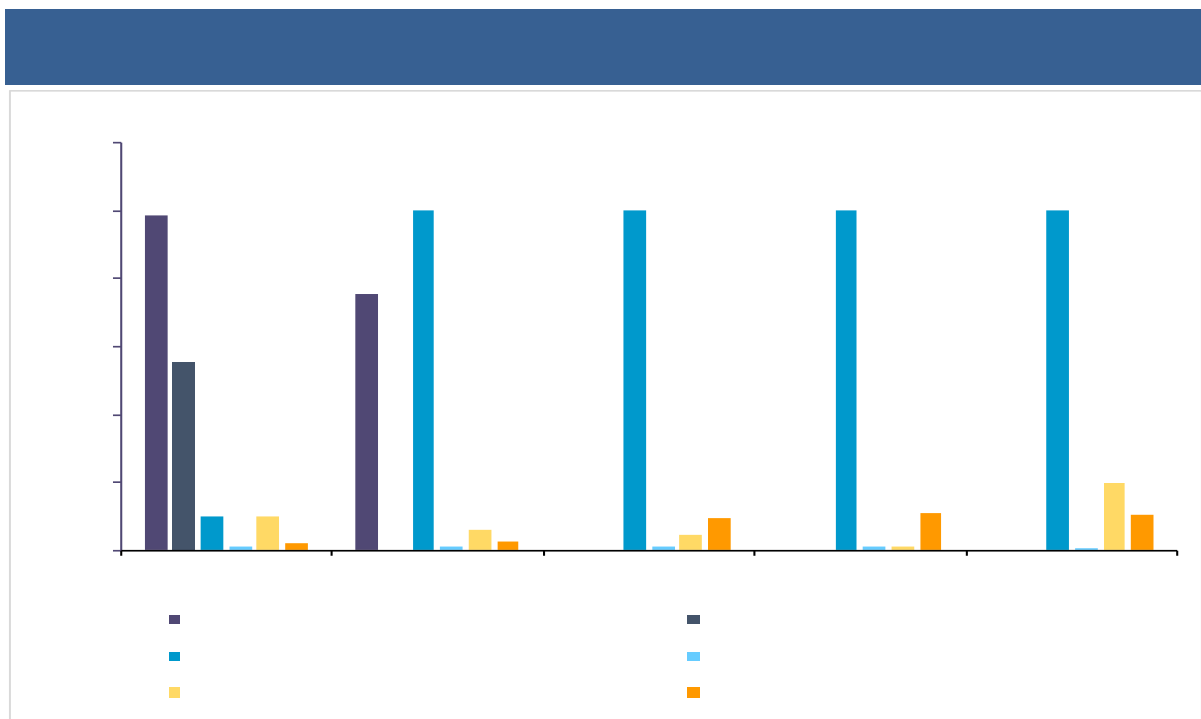
2023/9/13

14295 /

+0.46%

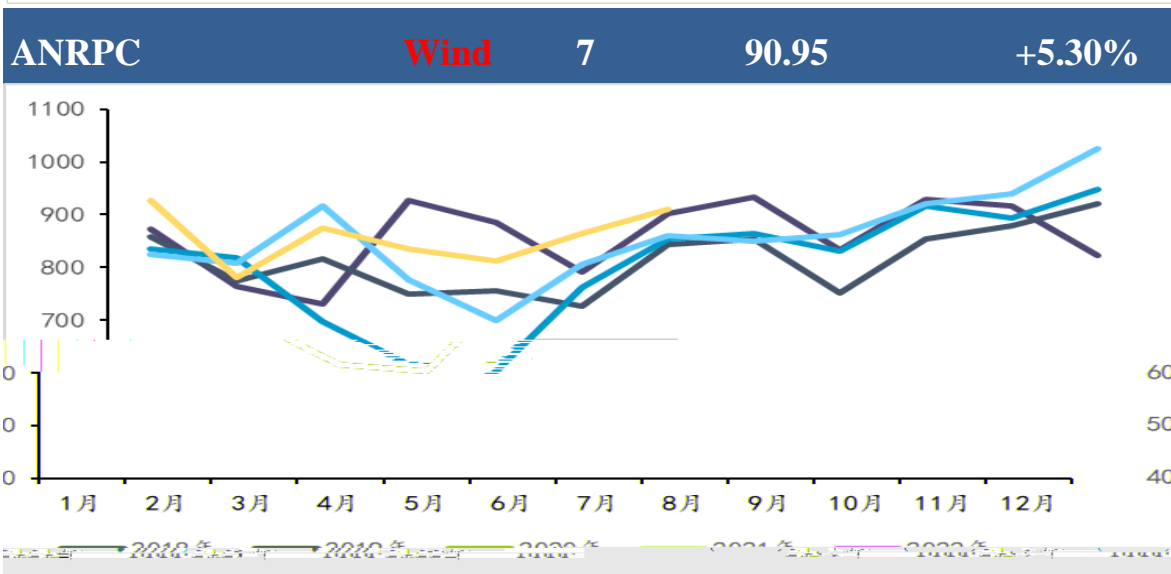
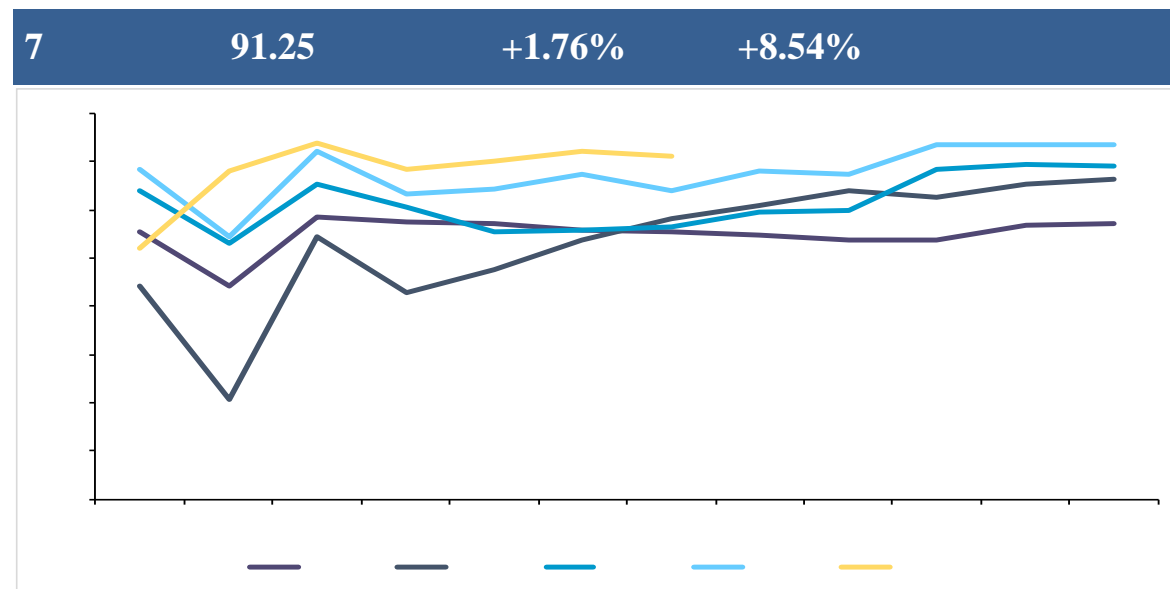
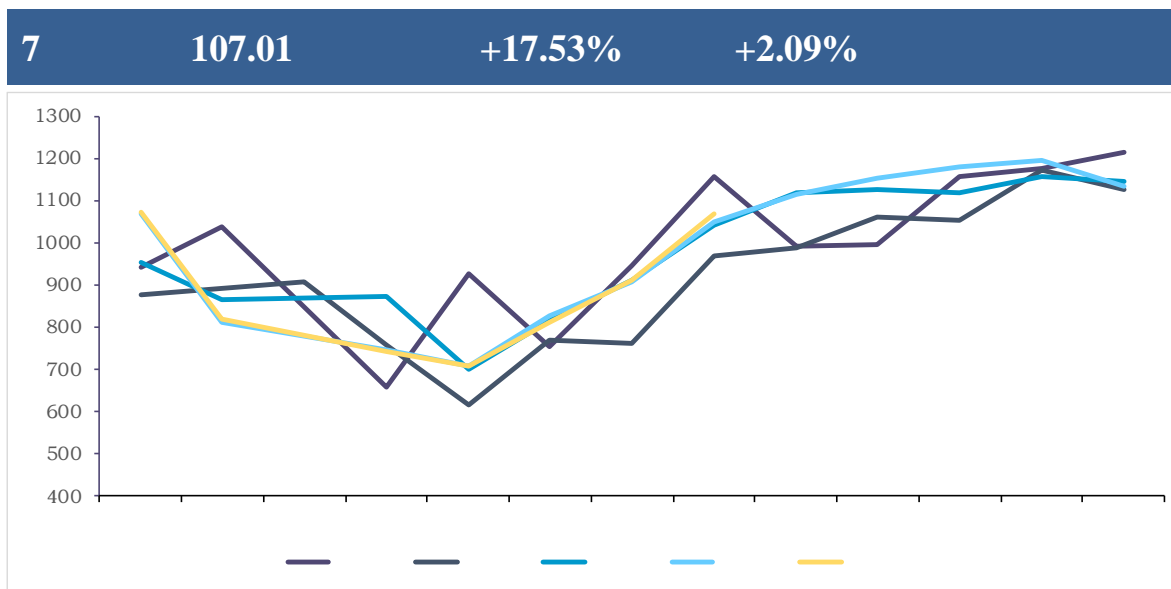


数据来源：同花顺ifind，广州期货研究中心



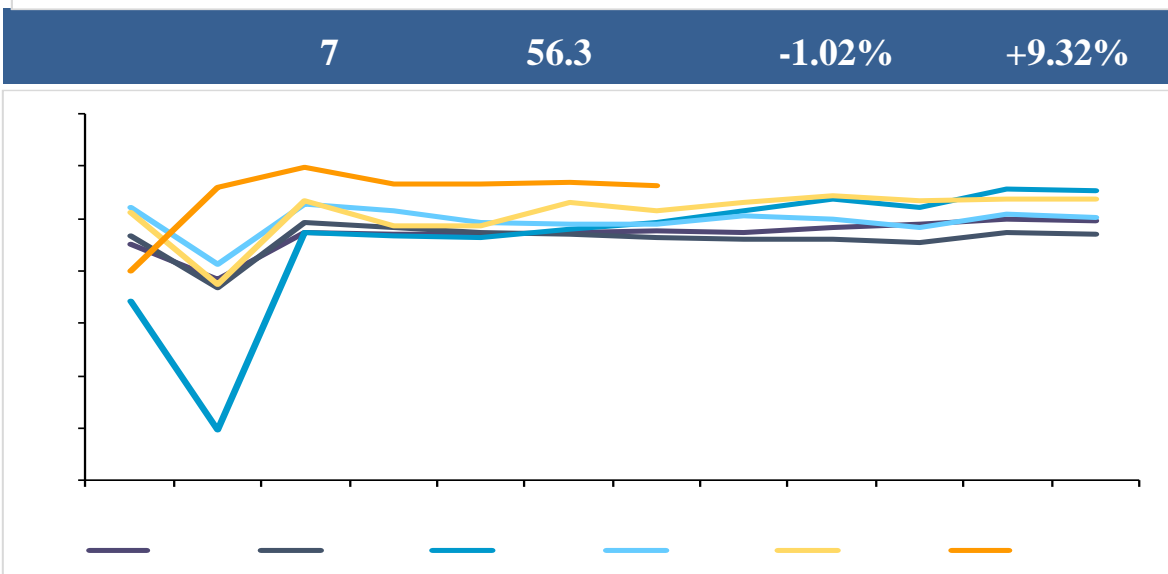
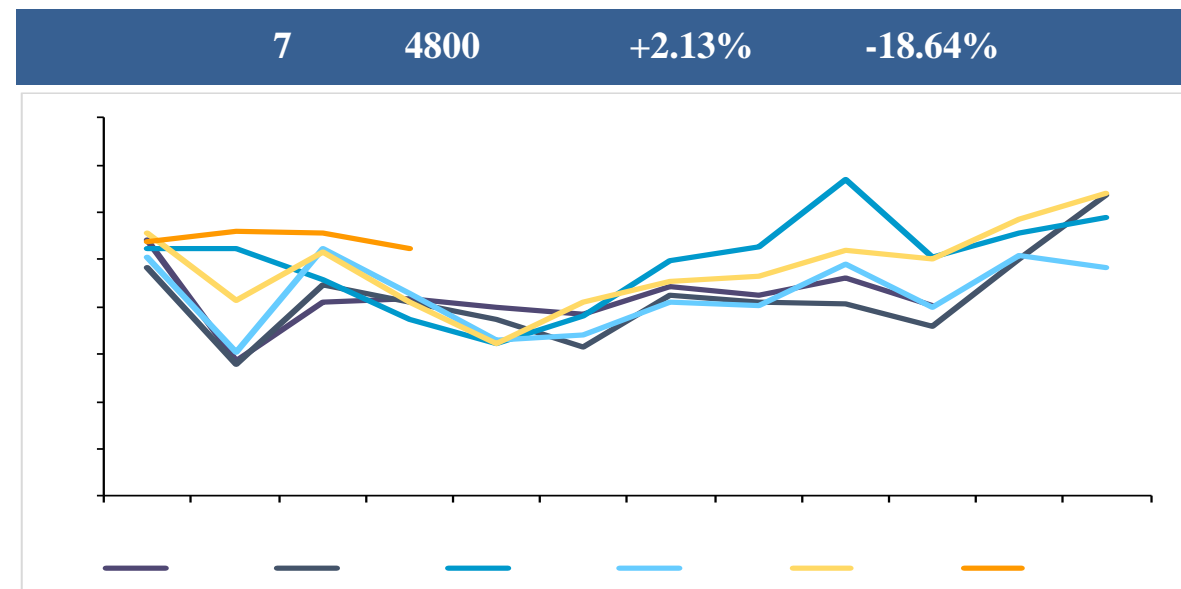
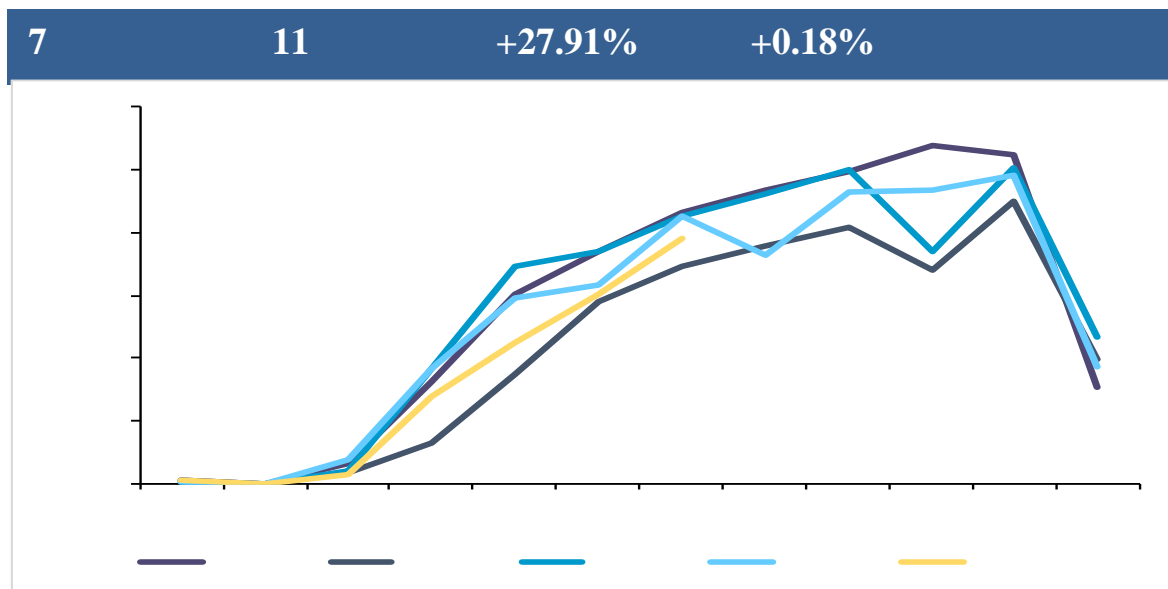
数据来源：同花顺ifind，广州期货研究中心

- 
- ✓
- ✓
- ✓



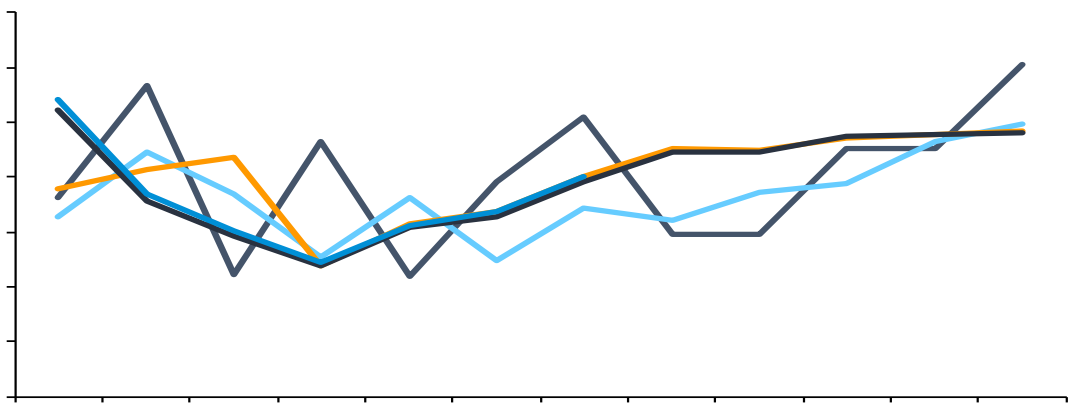
☐

- ✓
- ✓
- ✓



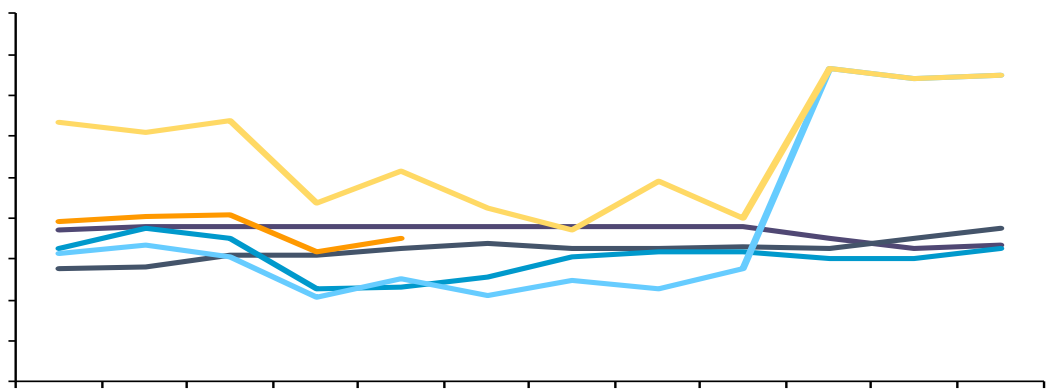


7 40.17 +19.38% +2.50%



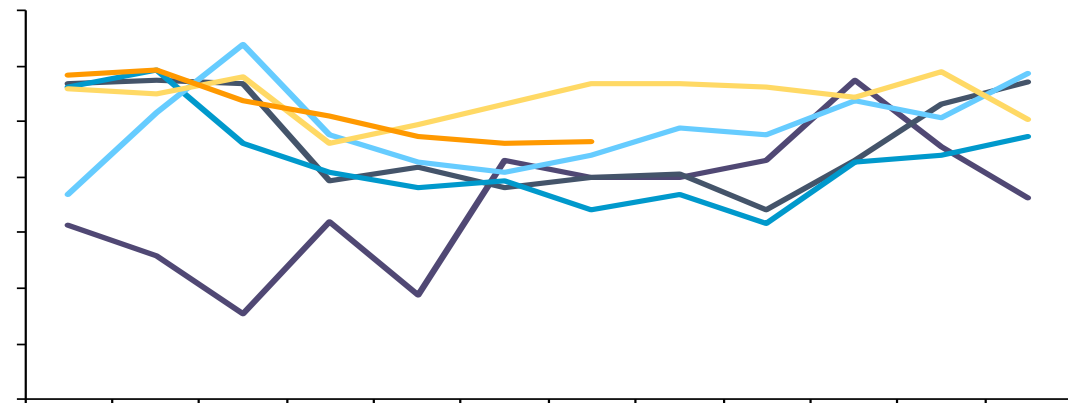
Legend: dark blue, light blue, orange, dark grey, medium blue

7 33.26 +0.76% -13.57%



Legend: dark blue, dark grey, light blue, medium blue, yellow, orange

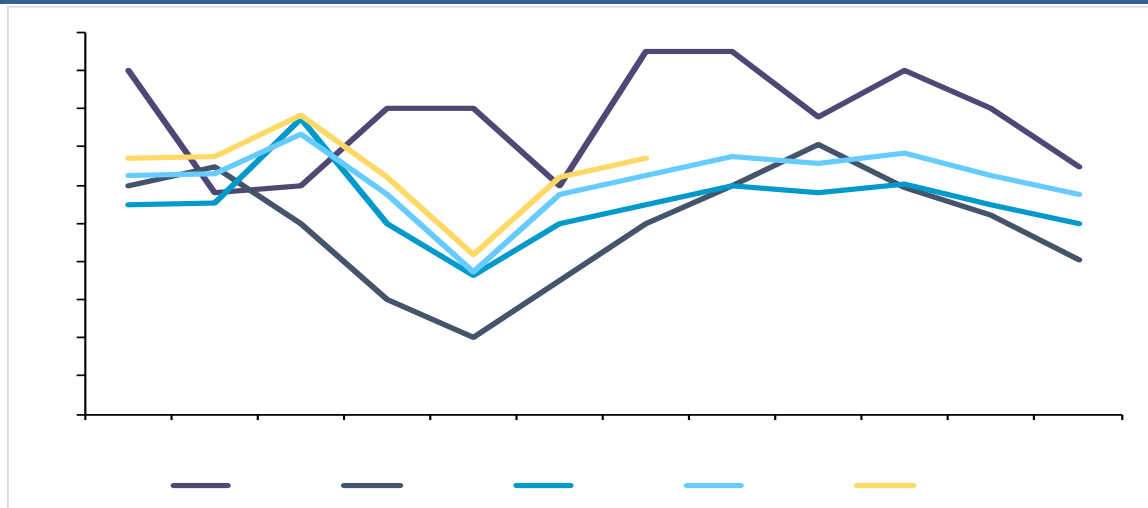
7 33.26 +0.76% -13.57%



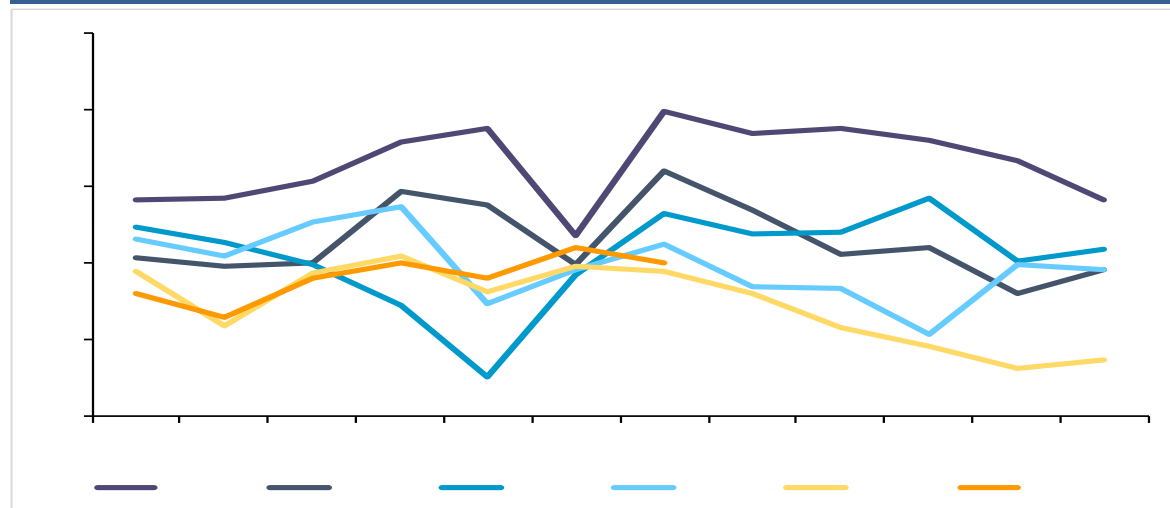
Legend: dark blue, dark grey, light blue, medium blue, yellow, orange

- ✓
- ✓
- ✓

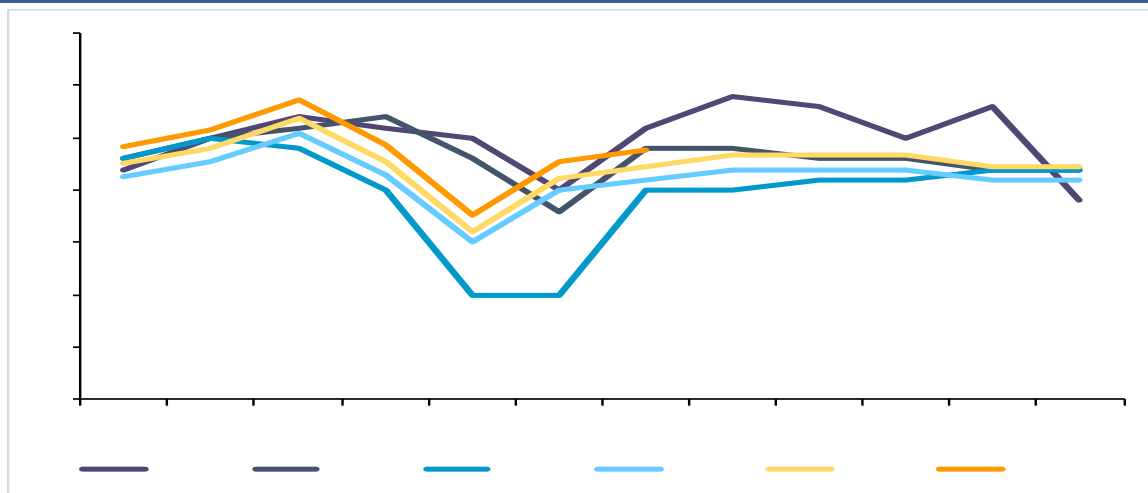
7 26.72 +2.02% +1.79%



7 20 -4.76% +2.93%

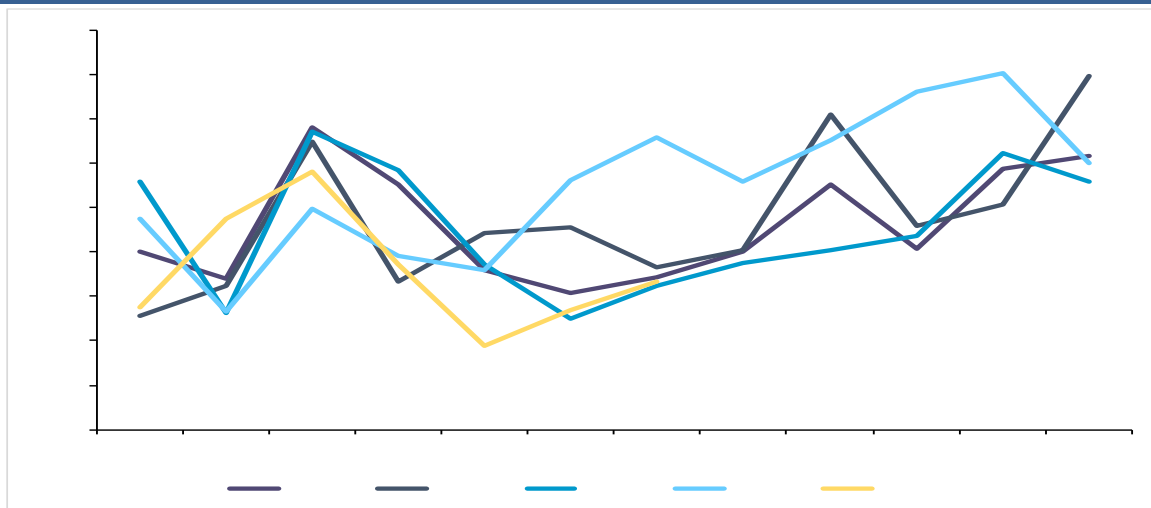


2023 7 5.39 +2.08% +3.26%

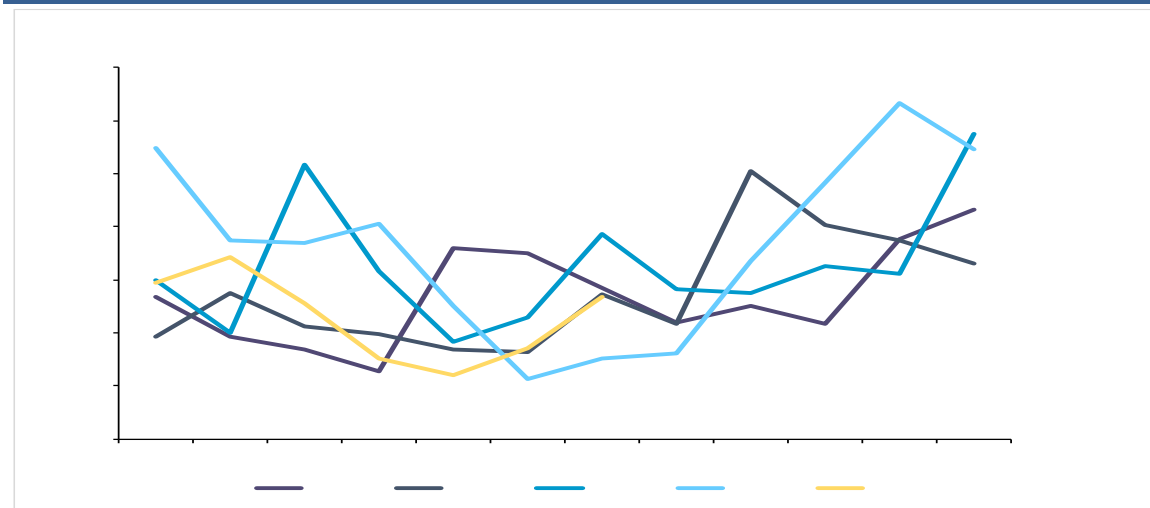


- ✓
- ✓
- ✓

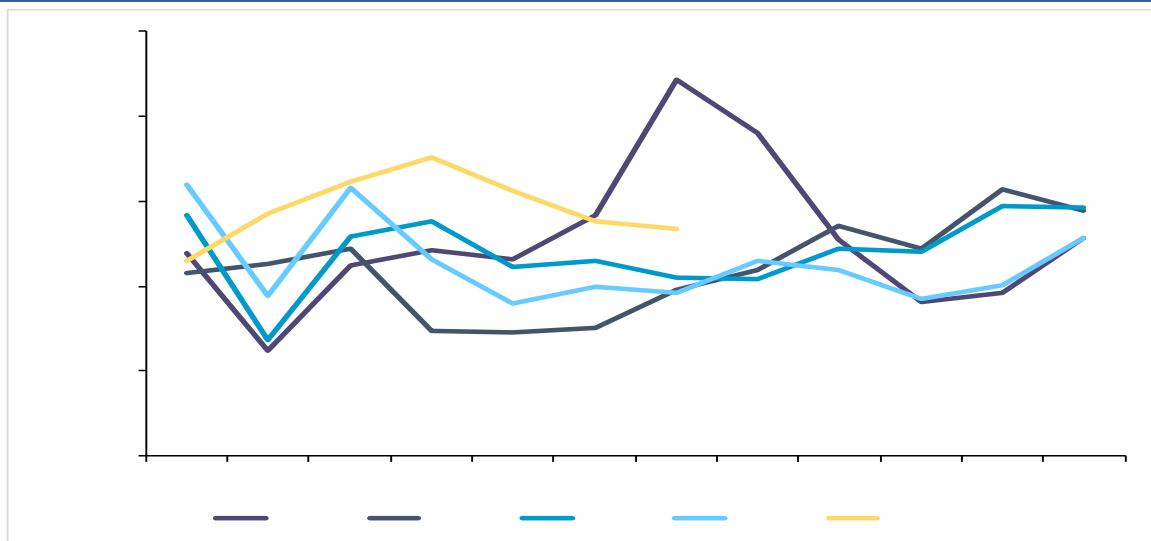
2023 1-7 24.94 -22.55%



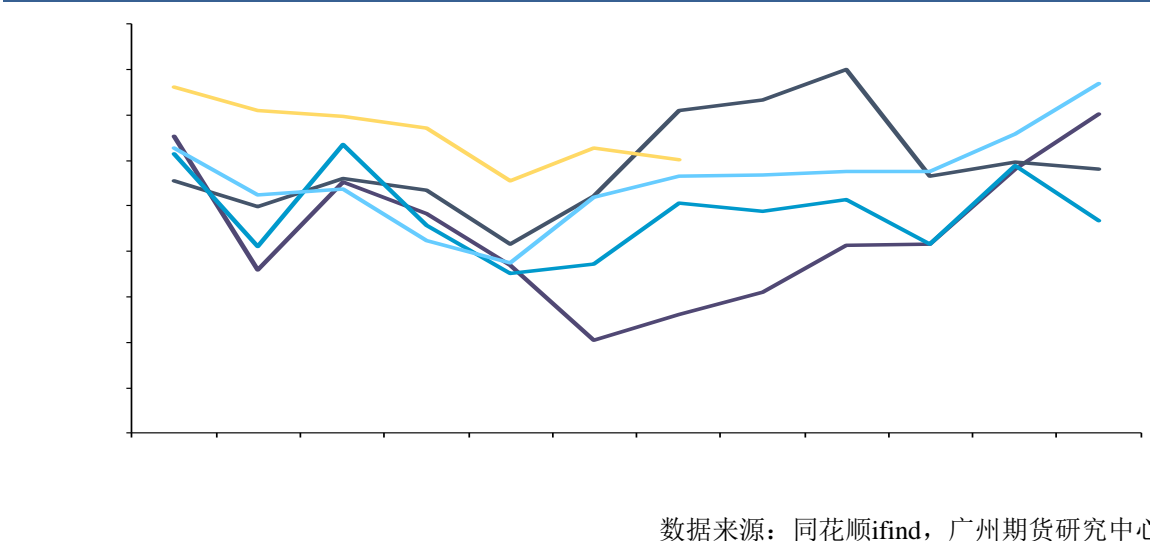
2023 1-7 7.99 -23.59%



2023 1-7 102.38 +127%



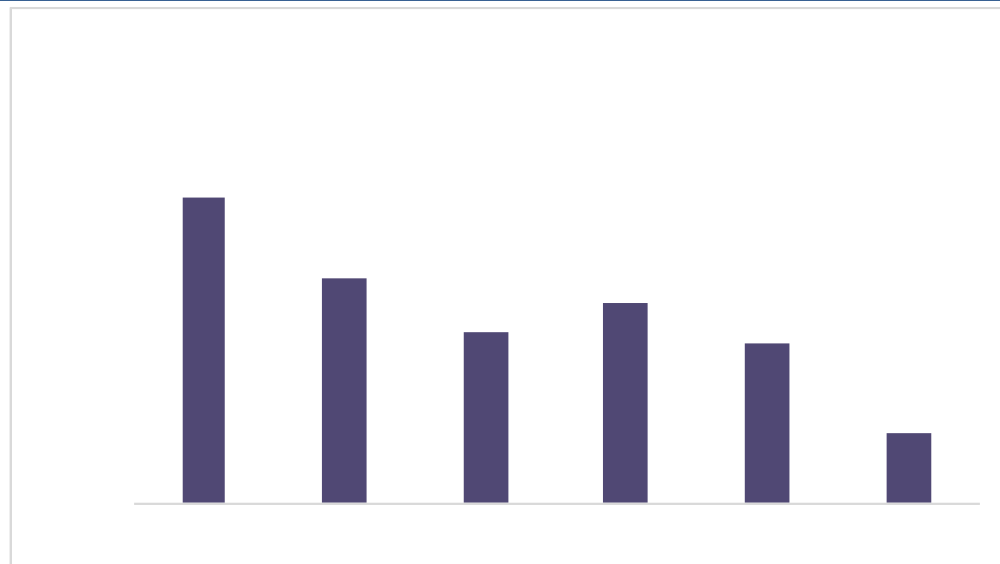
2023 1-7 231.18 +161%



2023 1-5

22000

-58.73%



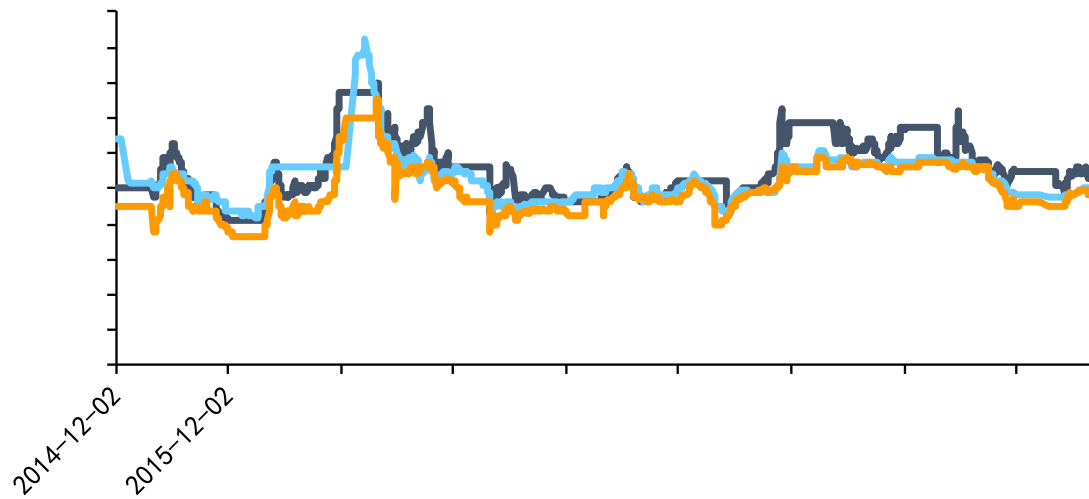
数据来源：同花顺ifind，广州期货研究中心

数据来源：同花顺ifind，广州期货研究中心

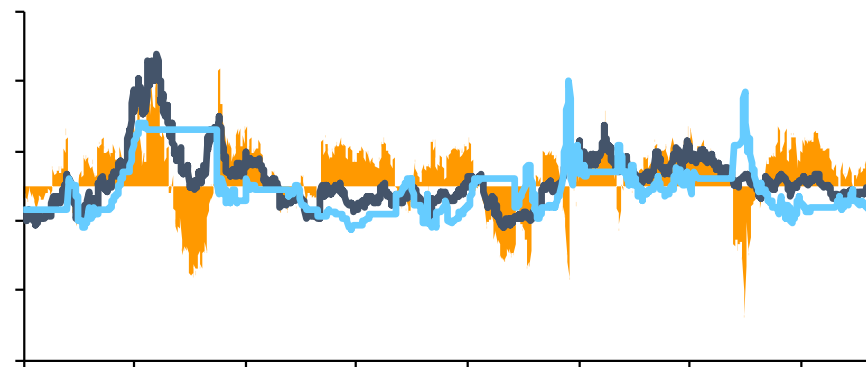
✓

- ✓
- ✓
- ✓

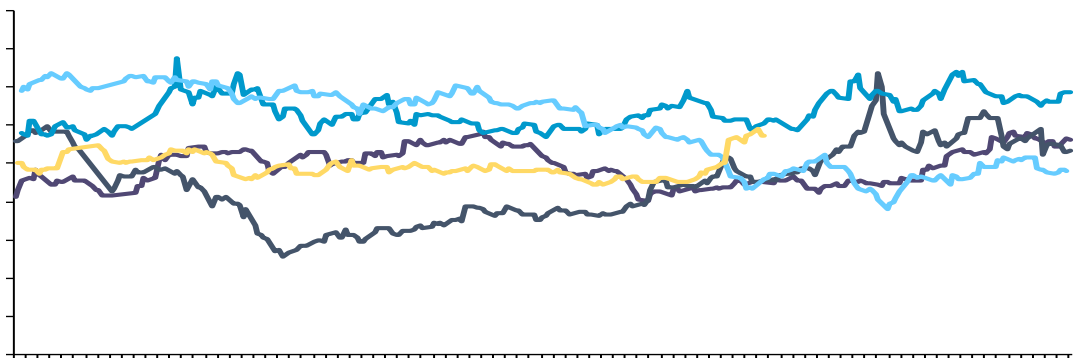
[Dark blue header bar]



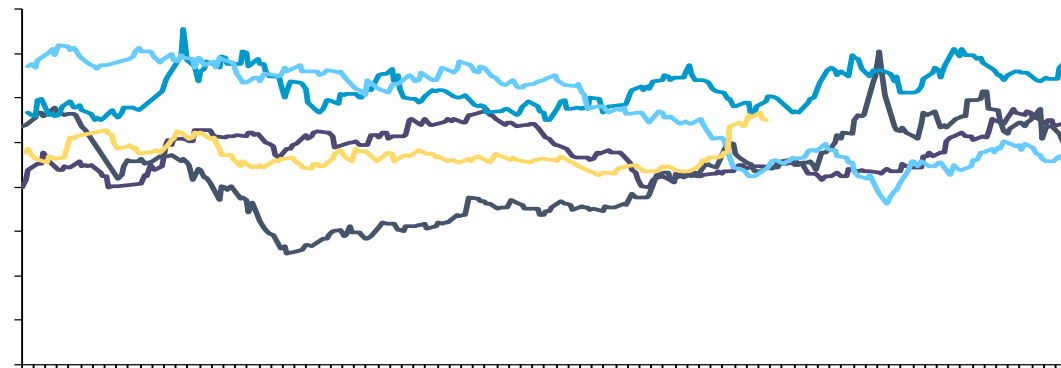
RU - [Dark blue header bar]



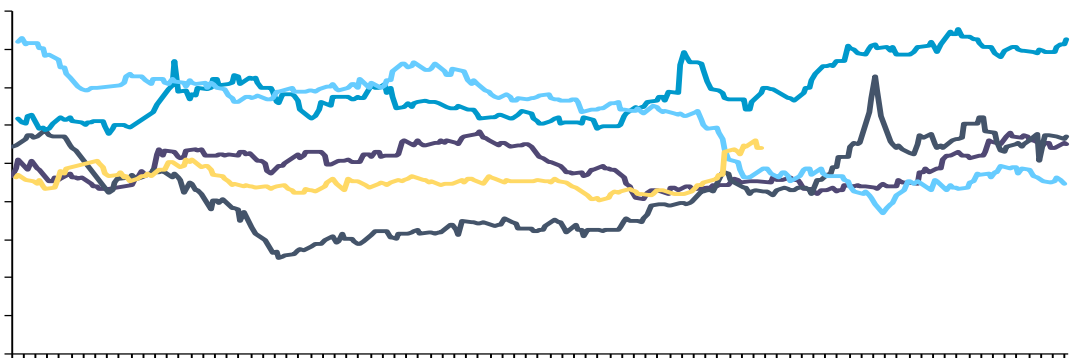
20



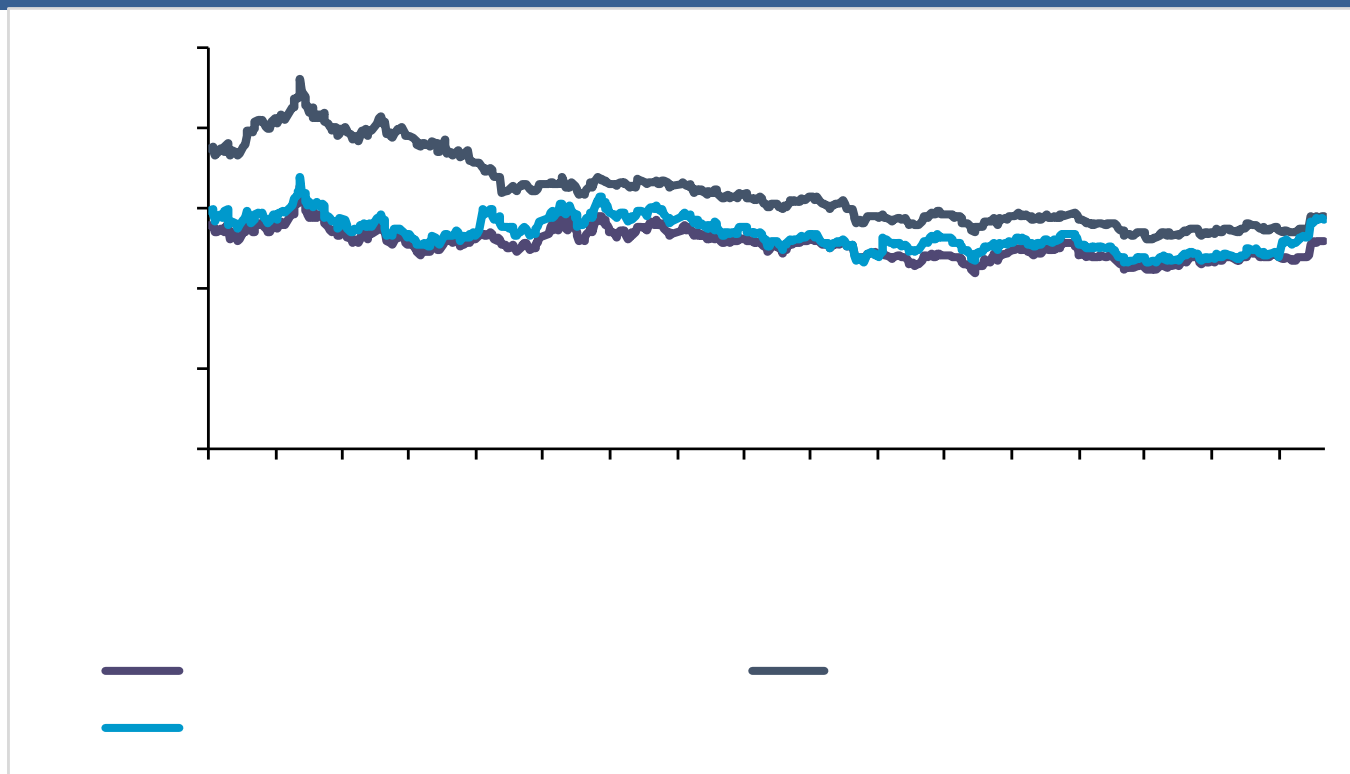
20



20



- ✓
- ✓
- ✓



数据来源：同花顺ifind，广州期货研究中心

✓



-----

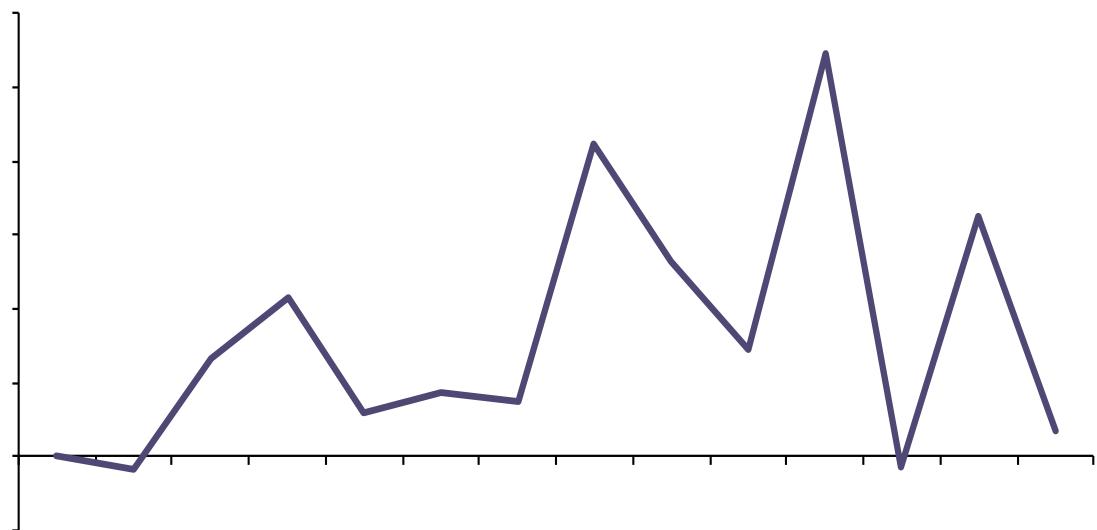
数据来源：同花顺ifind，广州期货研究中心

✓

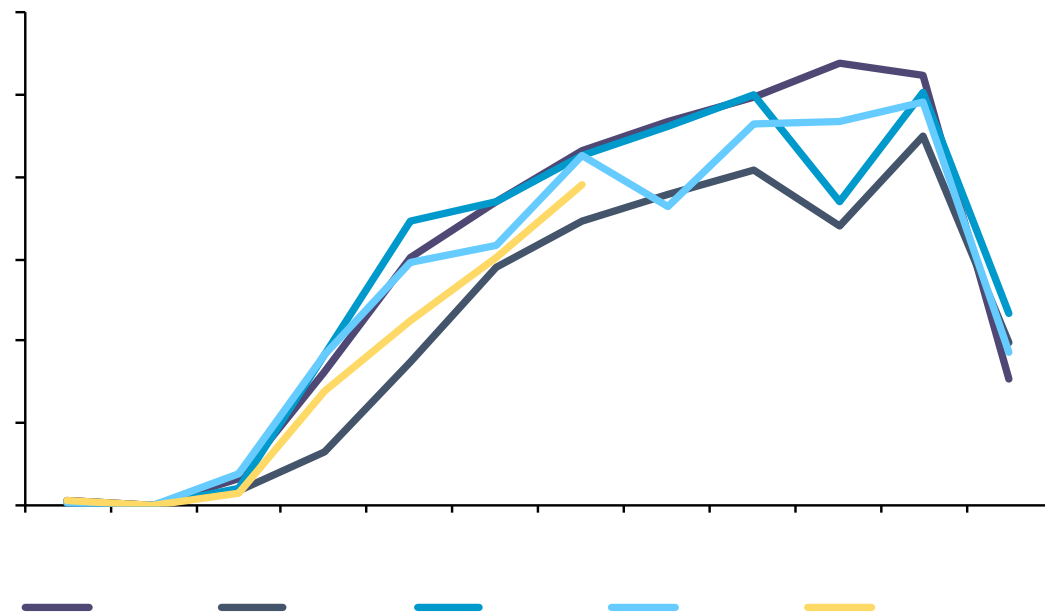
✓

✓

2023 7 7100 6

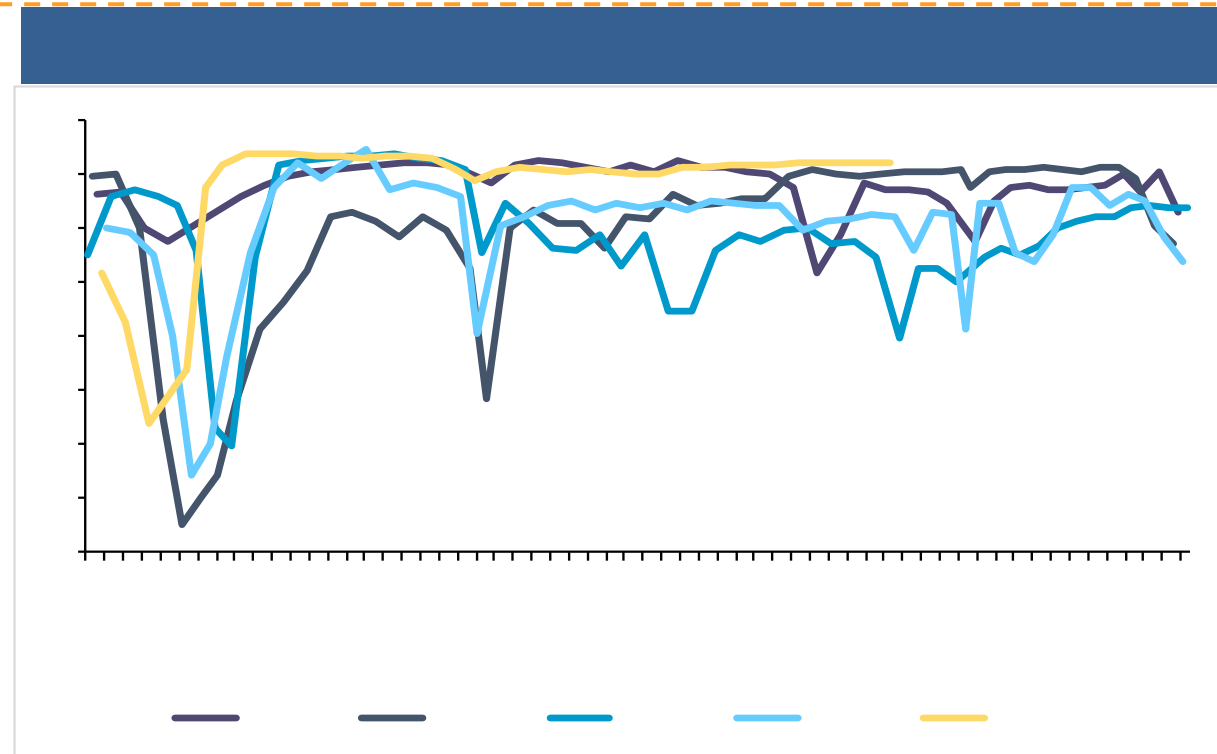


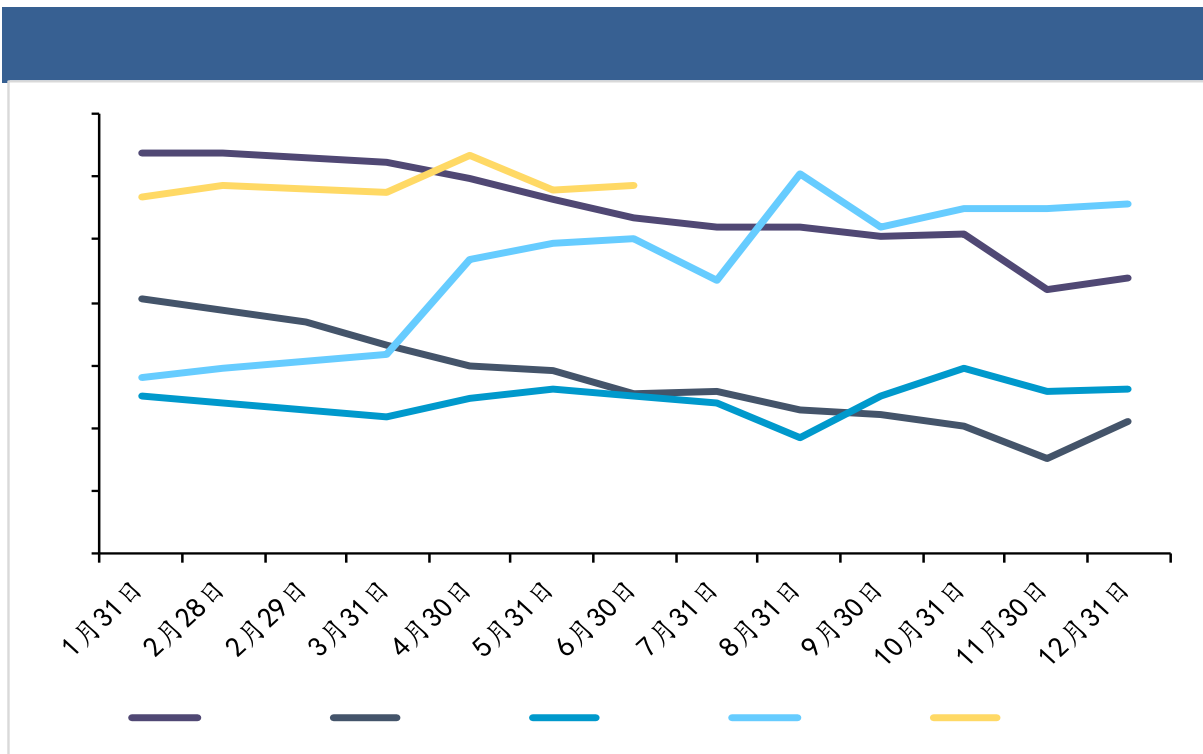
7 19.54%



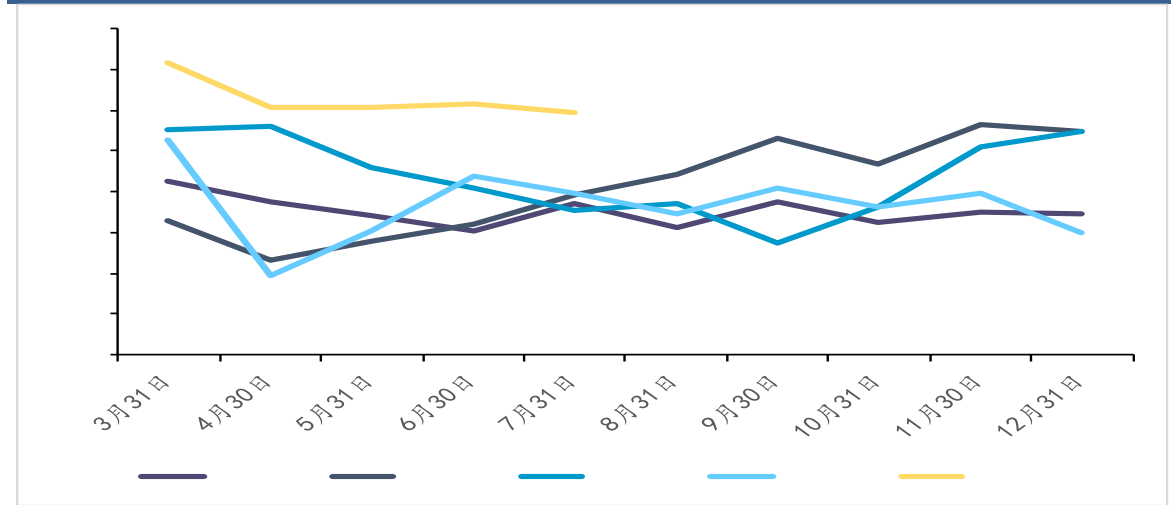


- ✓
- ✓
- ✓

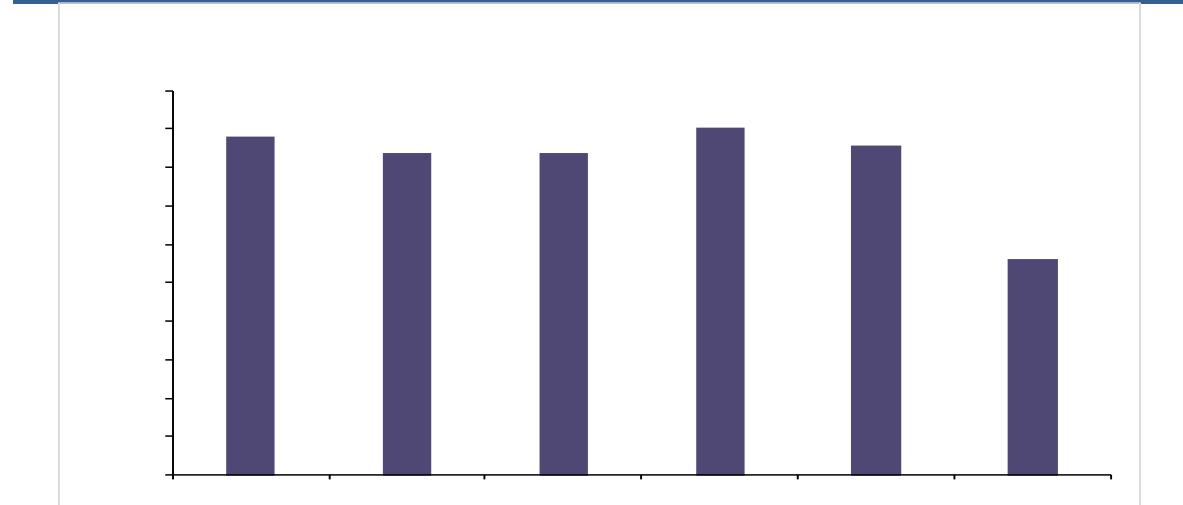




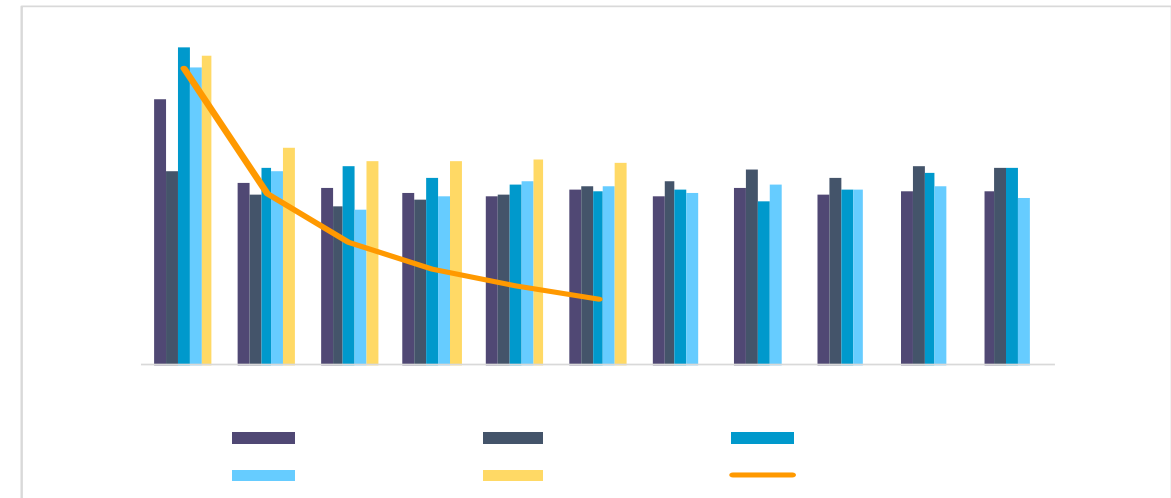
7 8478.9 -1.15%



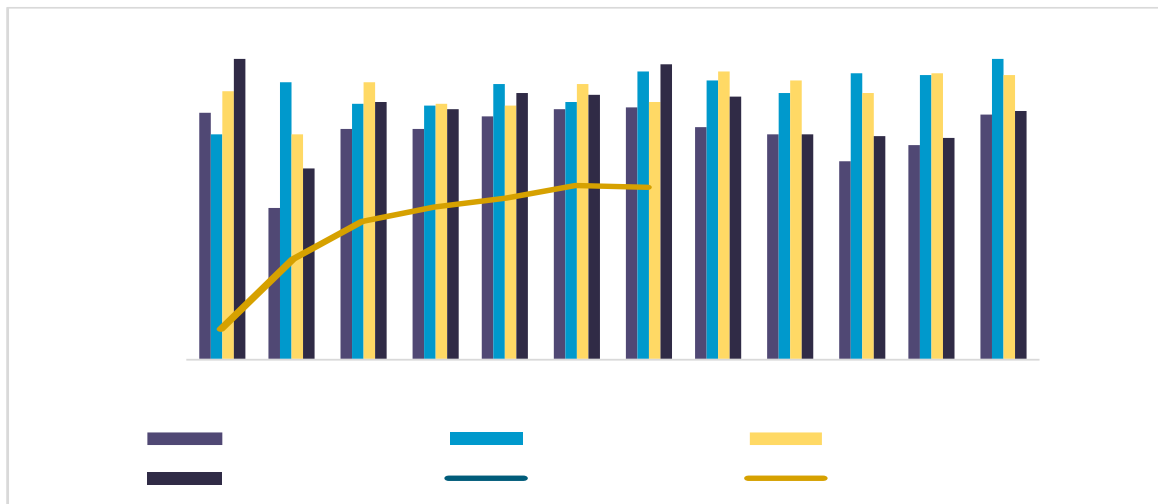
2022 1-7 56115.4



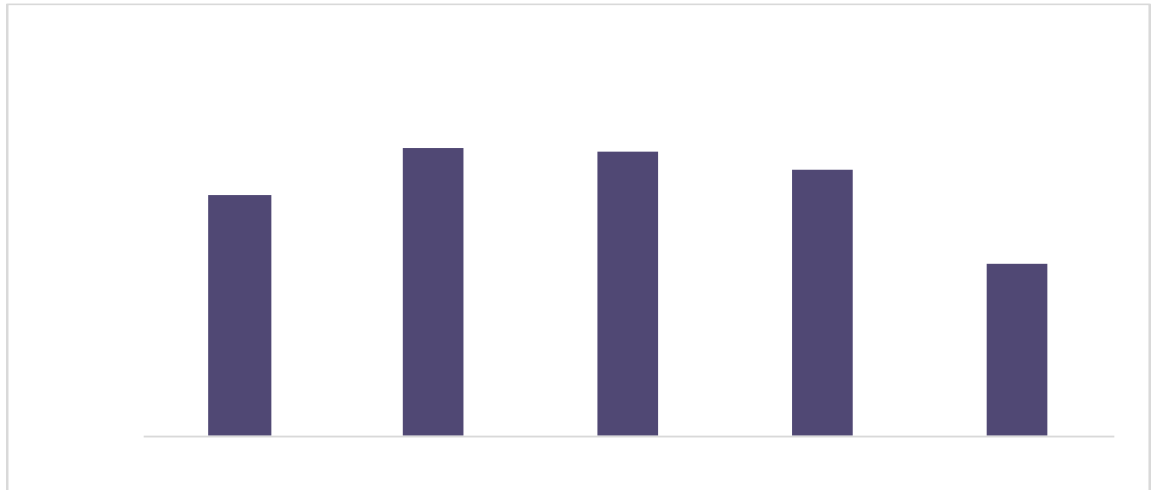
2023 1-7 56115.4 +0.89%



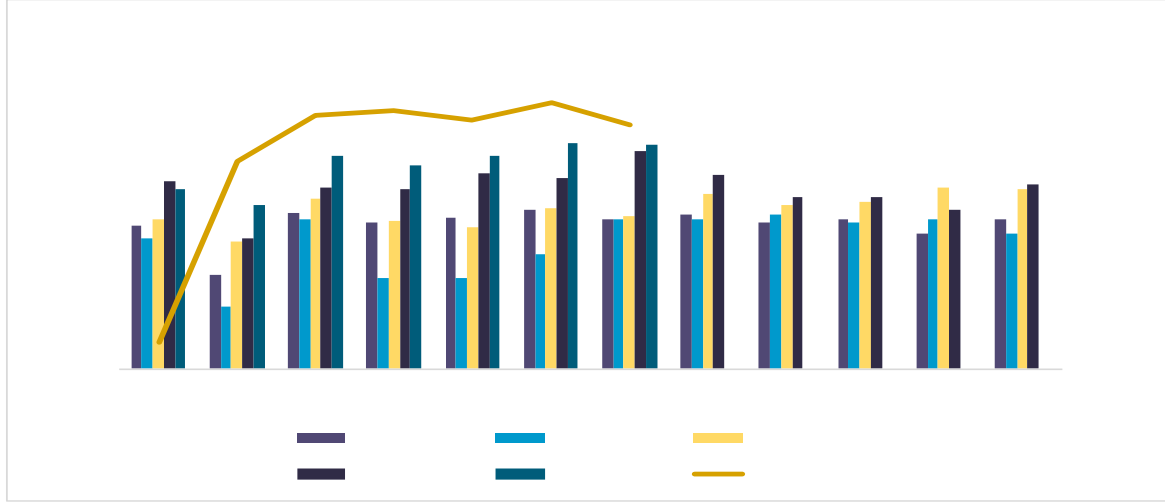
7 5689 +0.35% +4.63%



1-7 35717 +6.39%



1-7 124.40 +10.99%

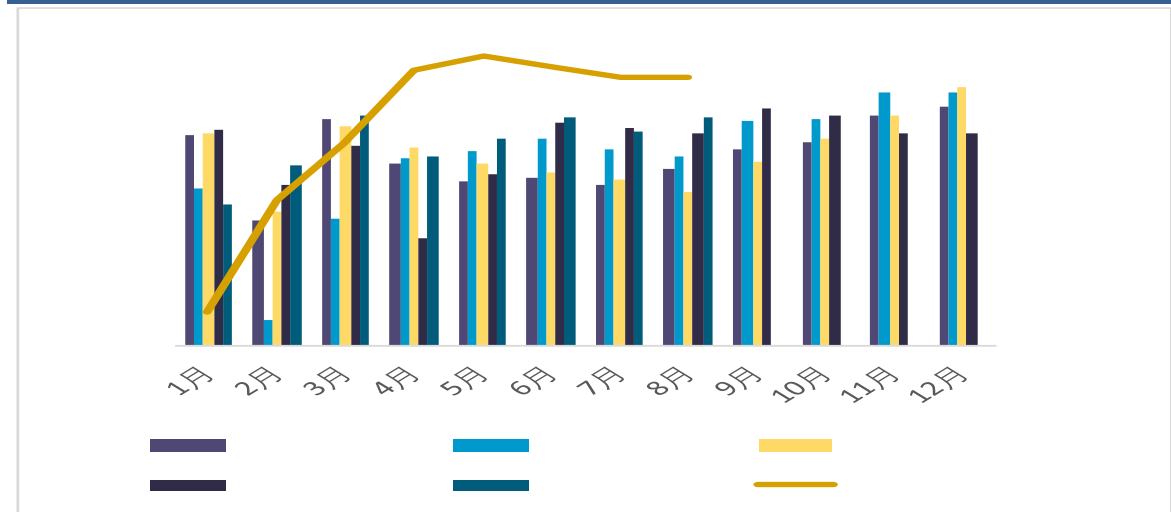


- ✓
- ✓
- ✓
- ✓

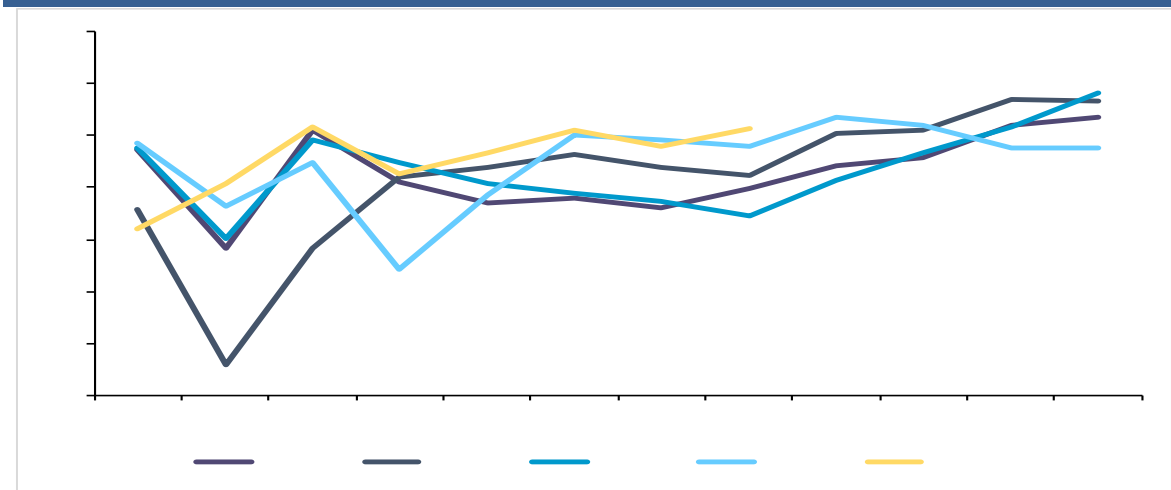




8 257.50 +7.25% +7.52%



Dark blue header bar

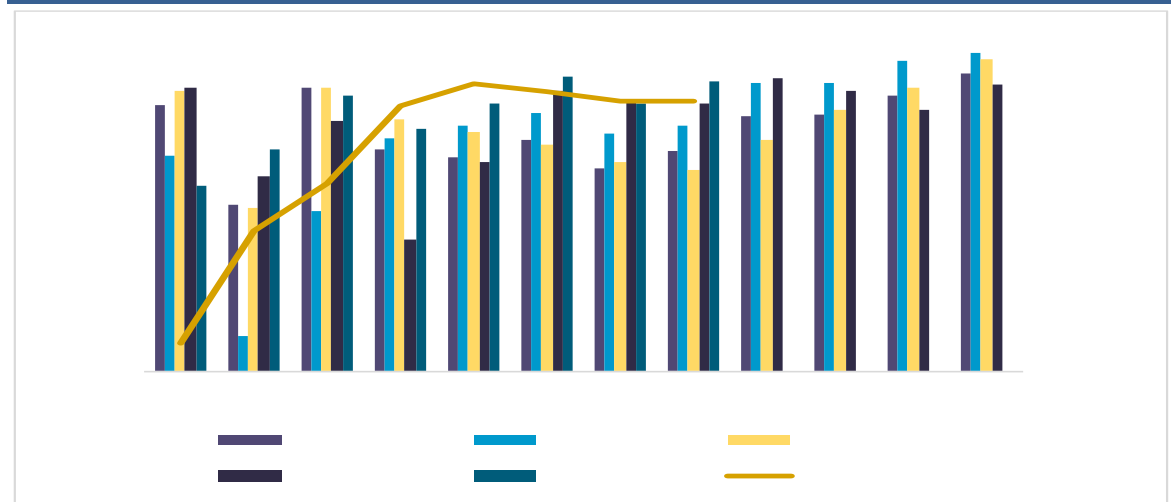


数据来源：同花顺ifind，广州期货研究中心

8 56.90% 0.9

Four checkmarks (✓) arranged vertically in a dashed orange box.

8 258.20 +8.35% +8.17%

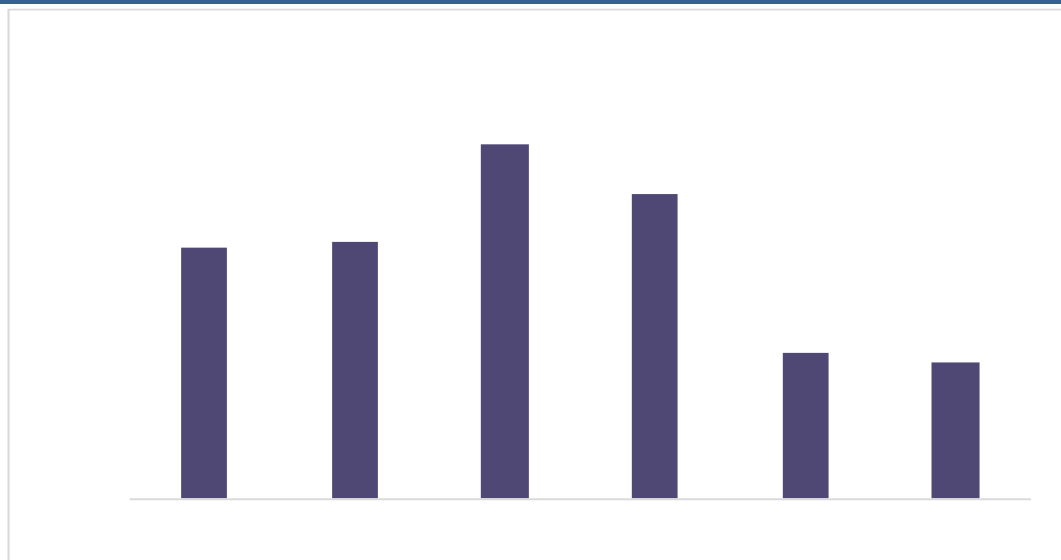


1-8 1820.8 +8.06%

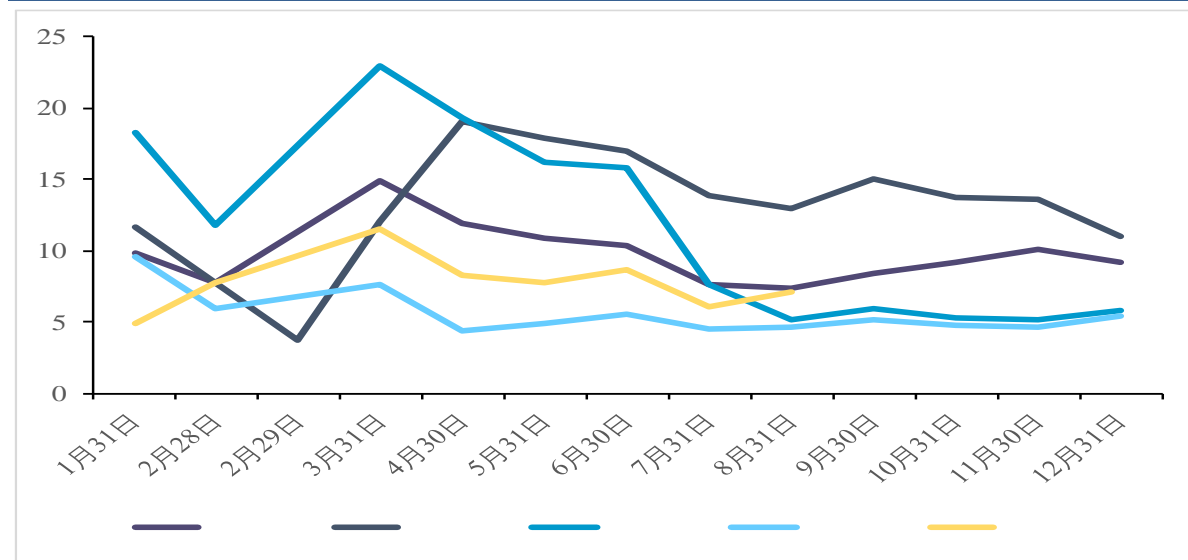


- ✓
- ✓
- ✓
- ✓

1-8                                  62.08                                  31.94%



8                                          7.12                                          +16.15%                                          +54.11%

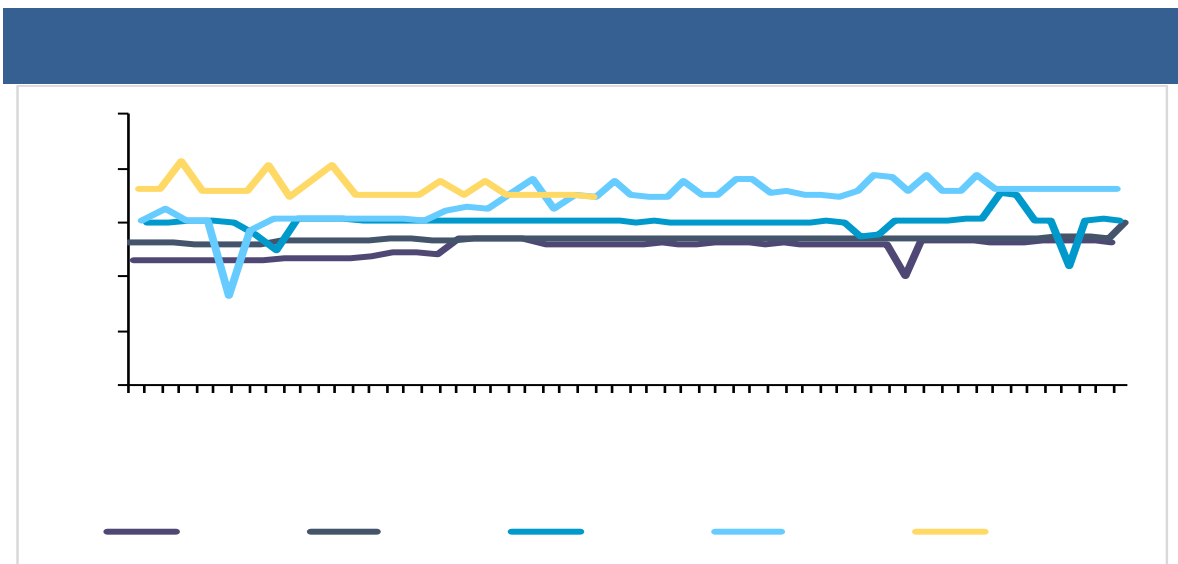
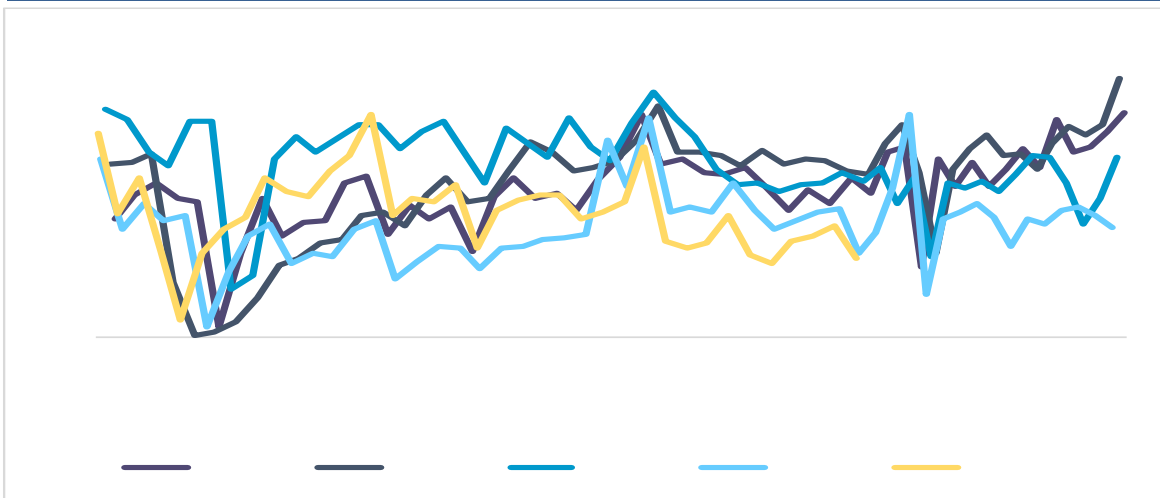


数据来源：同花顺ifind, 广州期货研究中心

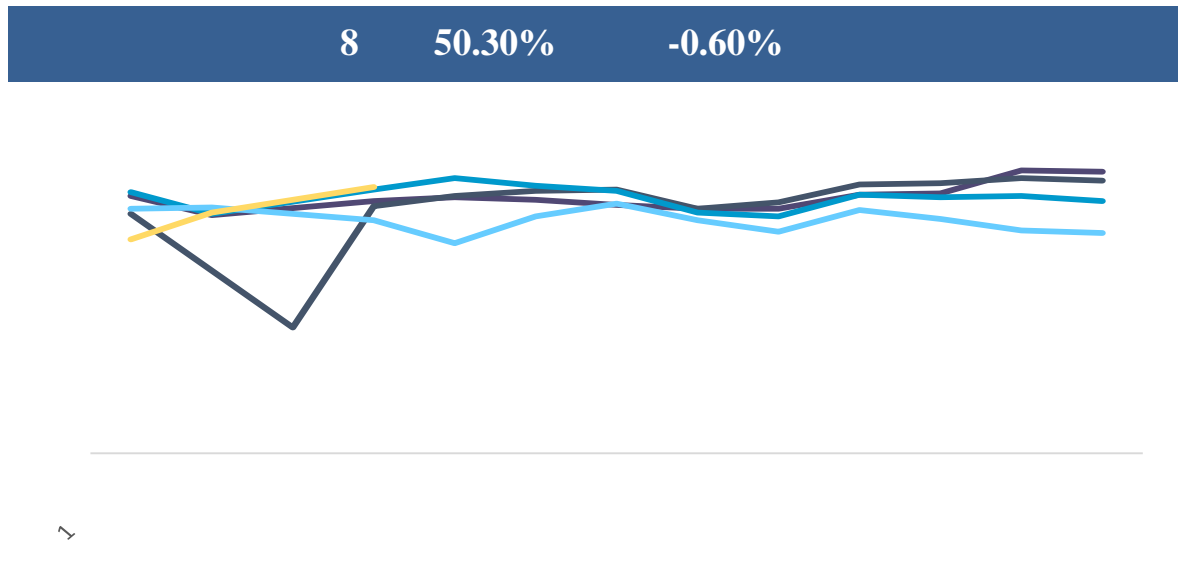
✓ 8	8	7.12	+16.15%	+54.11%	1-8	62.08	31.94%
✓ 8	2022 8	2021 8	7	1	4.87	7	6.13
	8	8	13%				2023 7
✓ 2023 1-8				8	31		

&

30



8 50.30% -0.60%





<b>上海分公司</b>	<b>杭州城星路营业部</b>	<b>四川分公司</b>	<b>上海陆家嘴营业部</b>
联系电话: 021-68905325 办公地址: 上海市浦东新区向城路69号1幢12层(电梯楼层15层)03室	联系电话: 0571-89809624 办公地址: 浙江省杭州市江干区城星路111号钱江国际时代广场2幢1301室	联系电话: 028-83279757 办公地址: 四川省成都市武侯区人民南路4段12号6栋802号	联系电话: 021-50568018 办公地址: 中国(上海)自由贸易试验区东方路899号1201-1202室
<b>广东金融高新区分公司</b>	<b>深圳营业部</b>	<b>佛山分公司</b>	<b>东莞营业部</b>
联系电话: 0757-88772666 办公地址: 广东省佛山市南海区海五路28号华南国际金融中心2幢2301、2302房	联系电话: 0755-83533302 办公地址: 广东省深圳市福田区梅林街道梅林路卓越梅林中心广场(南区)A座704A、705	联系电话: 0757-88772888 办公地址: 佛山市禅城区祖庙街道季华五路57号2座3006室	联系电话: 0769-22900598 办公地址: 广东省东莞市南城街道三元路2号粤丰大厦办公1501B
<b>广州营业部</b>	<b>清远营业部</b>	<b>肇庆营业部</b>	<b>华南分公司</b>
联系电话: 020-31953184 办公地址: 广州市海珠区新港西路105号大院2号1306房	联系电话: 0763-3808515 办公地址: 广东省清远市静福路25号金茂翰林院六号楼2层04、05、06号	联系电话: 0758-2270761 办公地址: 肇庆市端州区信安五路2号华生商住中心商业办公楼1704、1705办公室	联系电话: 020-61887585 办公地址: 广州市南沙区海滨路171号南沙金融大厦第8层自编803B
<b>北京分公司</b>	<b>湖北分公司</b>	<b>山东分公司</b>	<b>郑州营业部</b>
联系电话: 010-63360528 办公地址: 北京市丰台区丽泽路24号院1号楼-5至32层101内12层1211	联系电话: 027-59219121 办公地址: 湖北省武汉市江汉区香港路193号中华城A写字楼14层1401-9号	联系电话: 0531-66671202 办公地址: 山东省济南市历下区泺源大街8号绿城金融中心B楼906	联系电话: 0371-86533821 办公地址: 河南自贸试验区郑州片区(郑东)普惠路80号1号楼2单元23层2301号
<b>青岛分公司</b>	<b>机构业务部</b>	<b>机构事业一部</b>	<b>机构事业二部</b>
联系电话: 0532-88697833 办公地址: 山东省青岛市崂山区深圳路100号办公楼户905室	联系电话: 020-22836158 办公地址: 广州市天河区临江大道1号寺右万科中心南塔6层	联系电话: 020-22836155 办公地址: 广州市天河区临江大道1号寺右万科中心南塔6层	联系电话: 020-22836182 办公地址: 广州市天河区临江大道1号寺右万科中心南塔6层
<b>机构事业三部</b>	<b>广期资本管理(上海)有限公司</b>		
联系电话: 020-22836185 办公地址: 广州市天河区临江大道1号寺右万科中心南塔6层	联系电话: 021-50390265 办公地址: 上海市浦东新区福山路388号越秀大厦701室		

