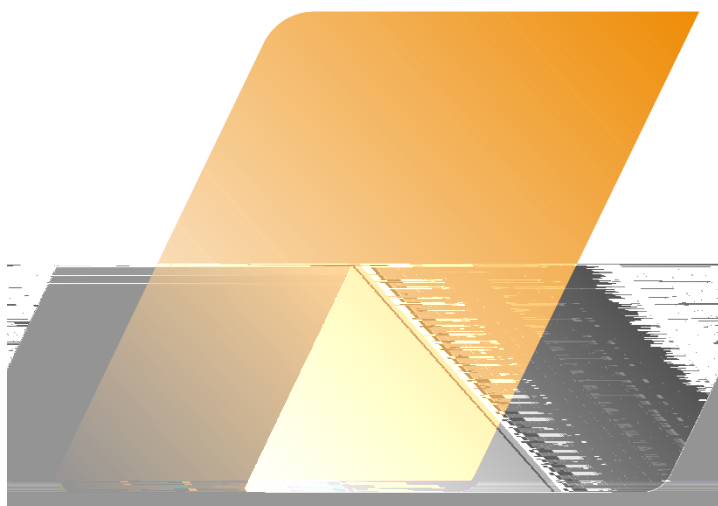


PMI 49.5

5



 01

 02

 03

 04

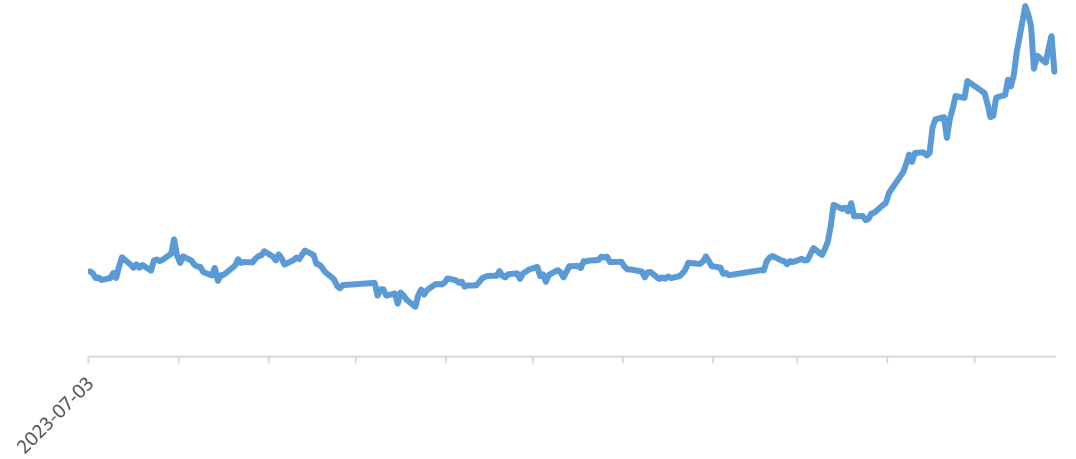
 05

 06

/



LME



¥ 1110

✓

✓



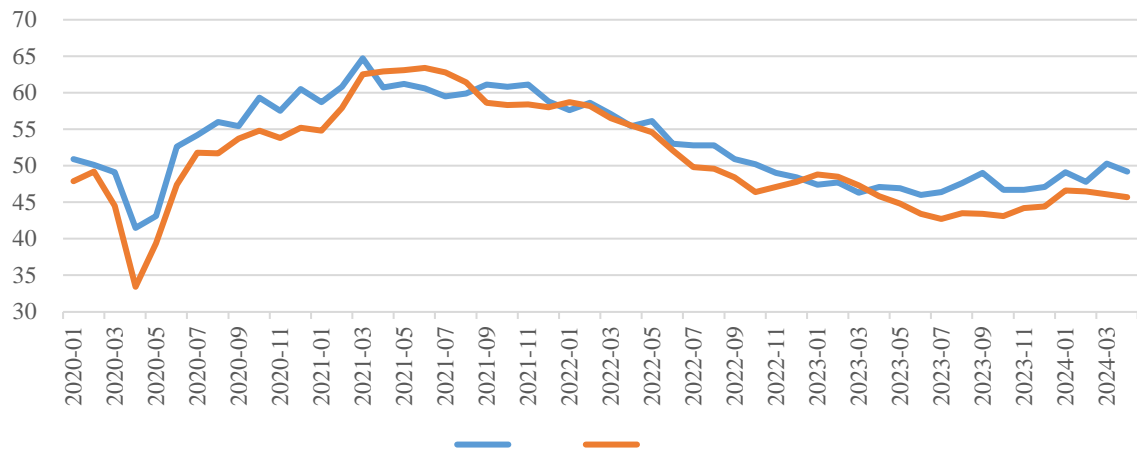
GDP



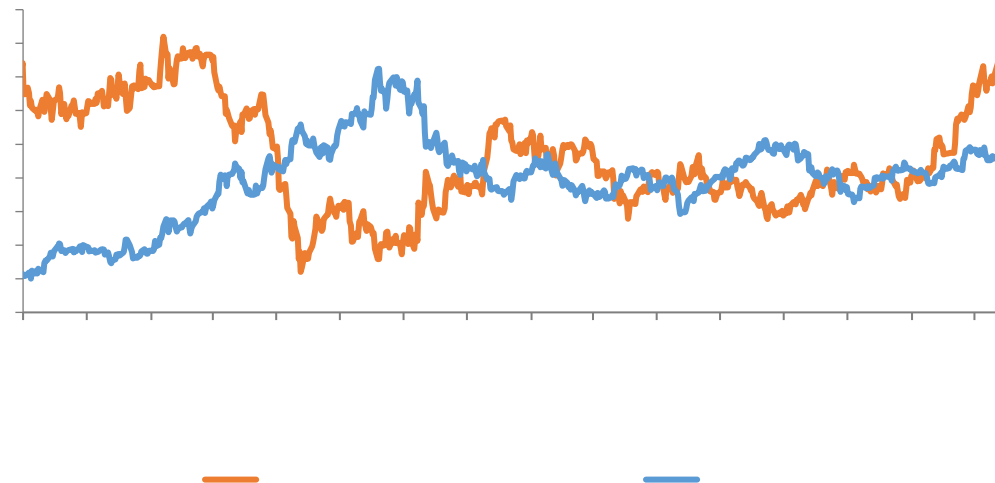
ISM

GDP

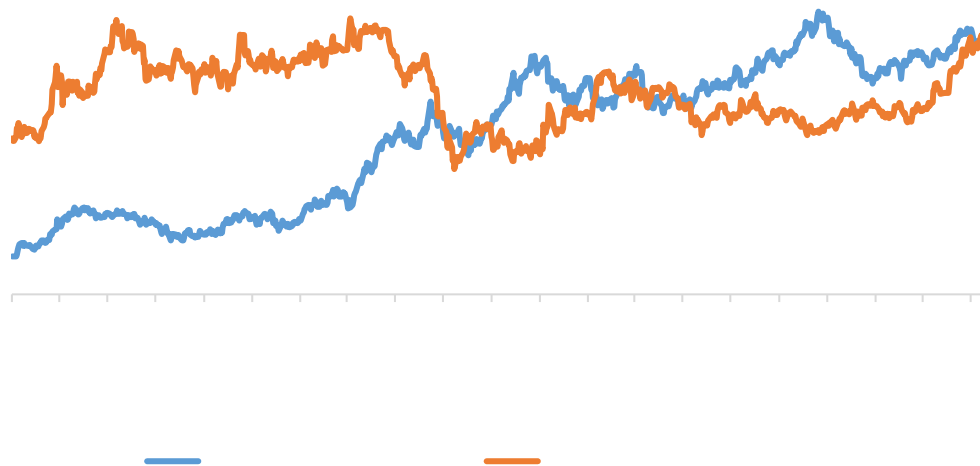
PMI



LME



10



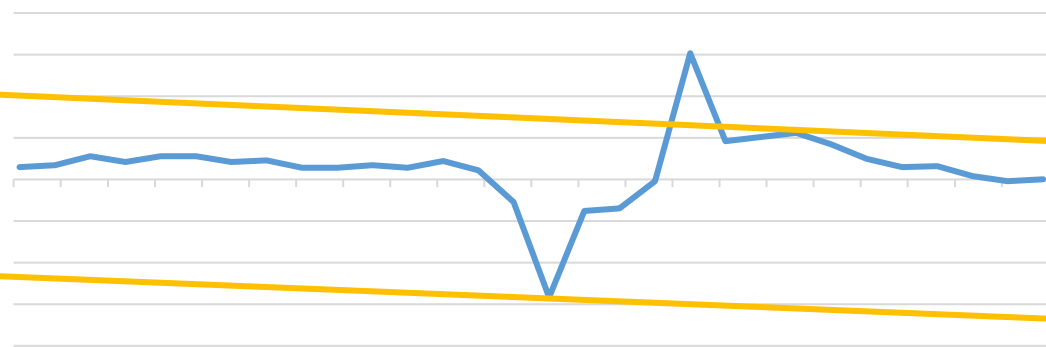
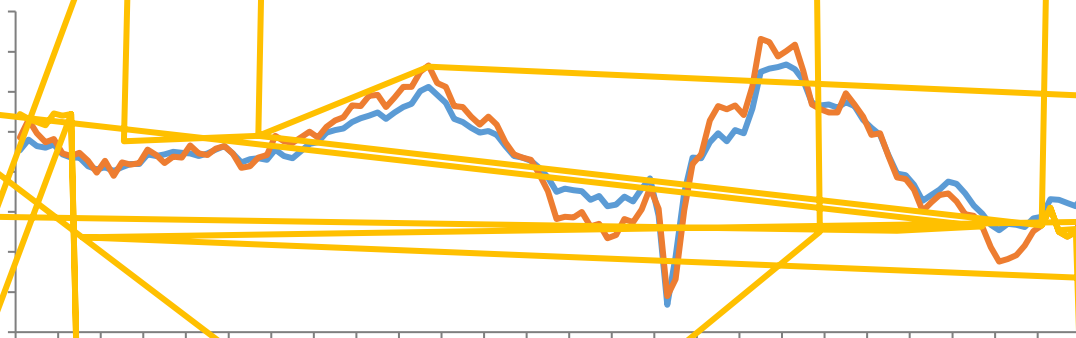
PMI



PMI



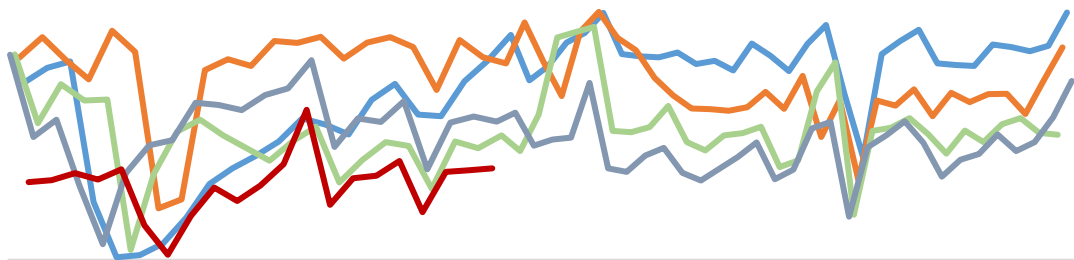
GDP



PMI

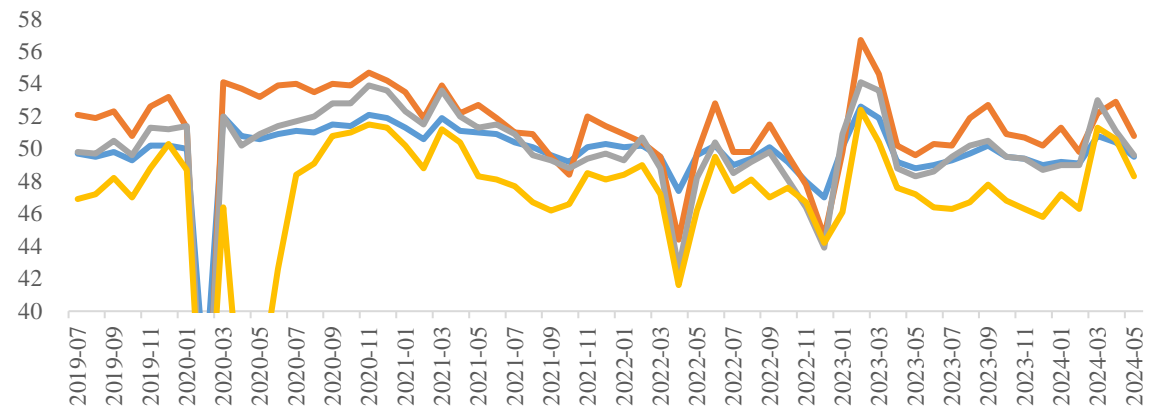
30

:

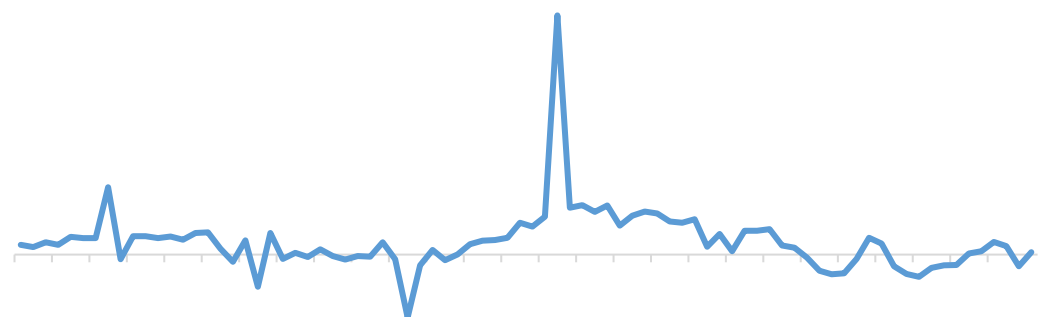


— — — — —

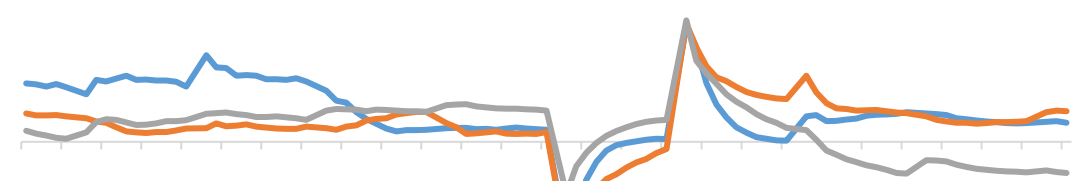
PMI



— PMI — PMI: — PMI: — PMI:



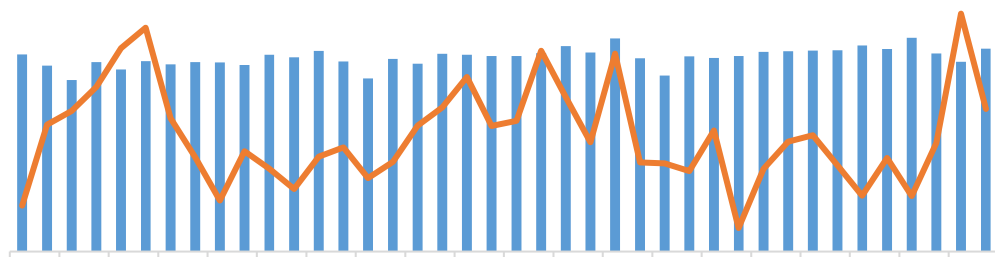
— — —





CSPT

TC



■

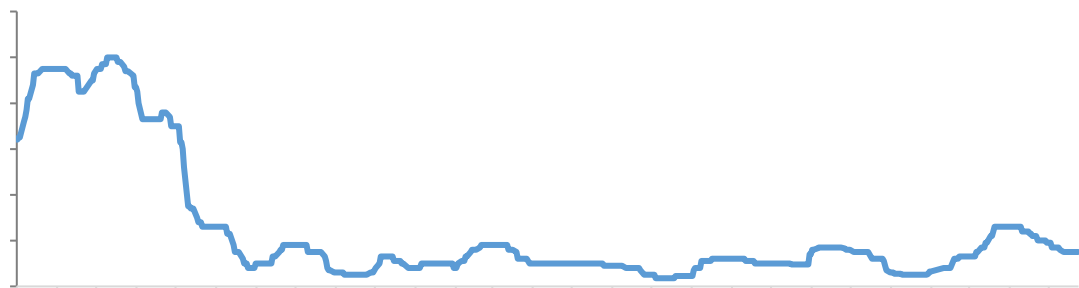
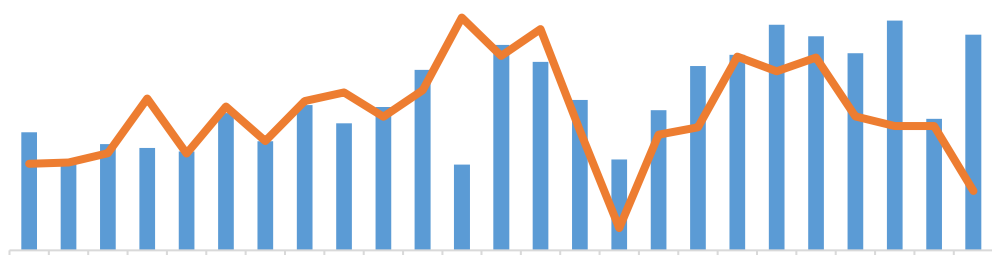
—

CSPT

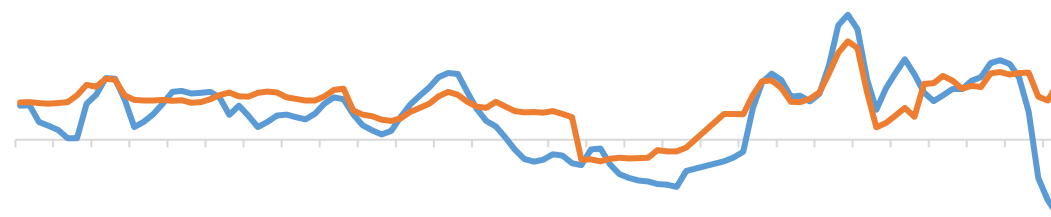
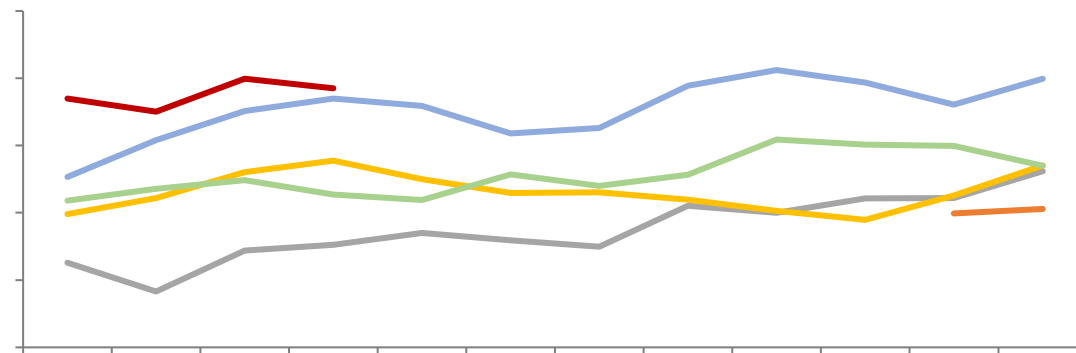
TC



1-4

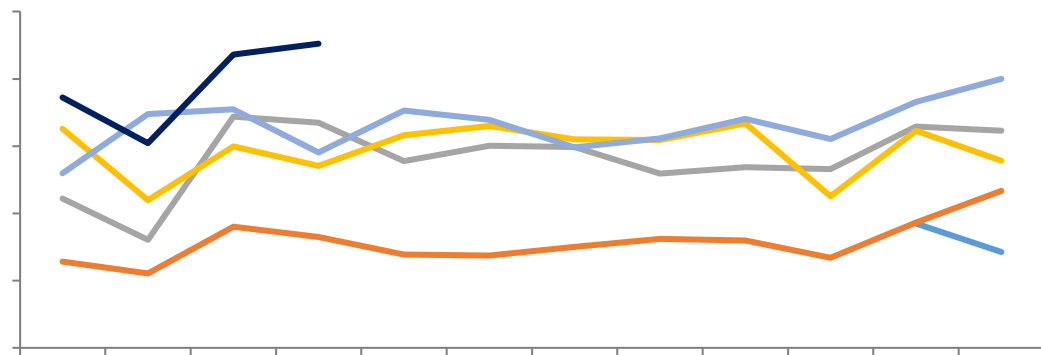
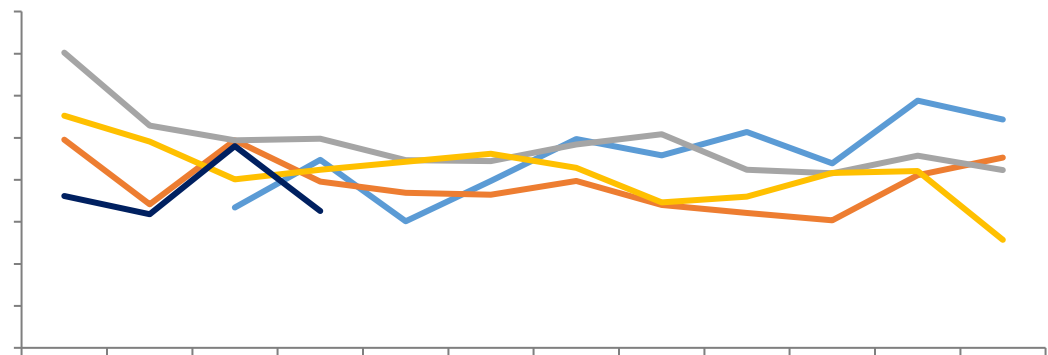
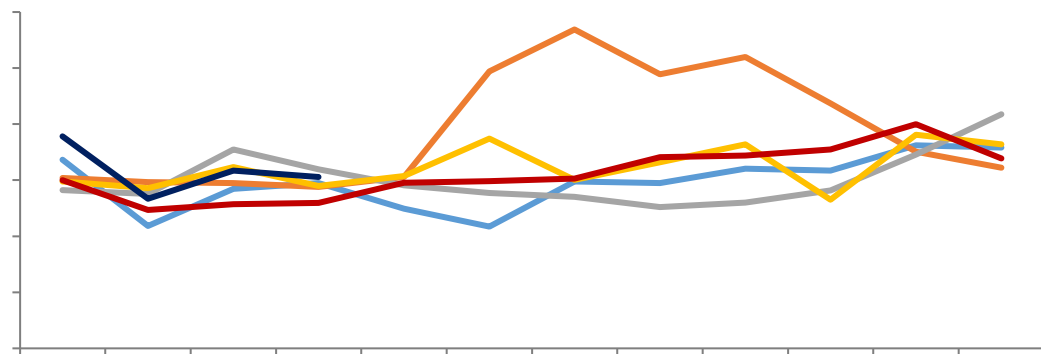
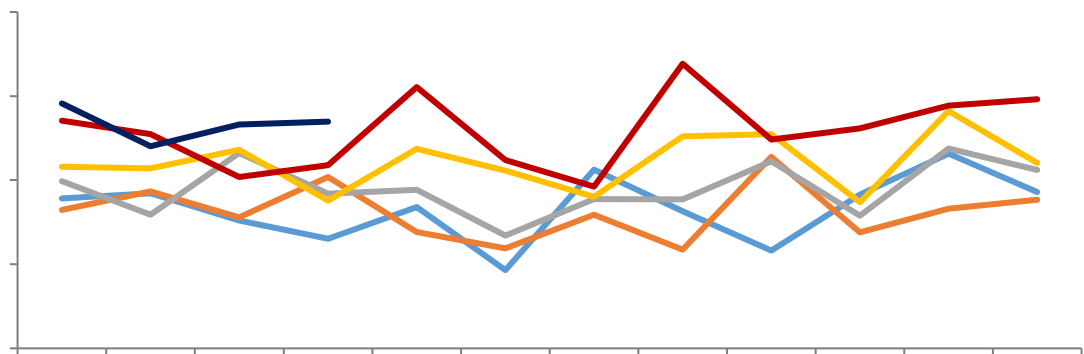


SMM

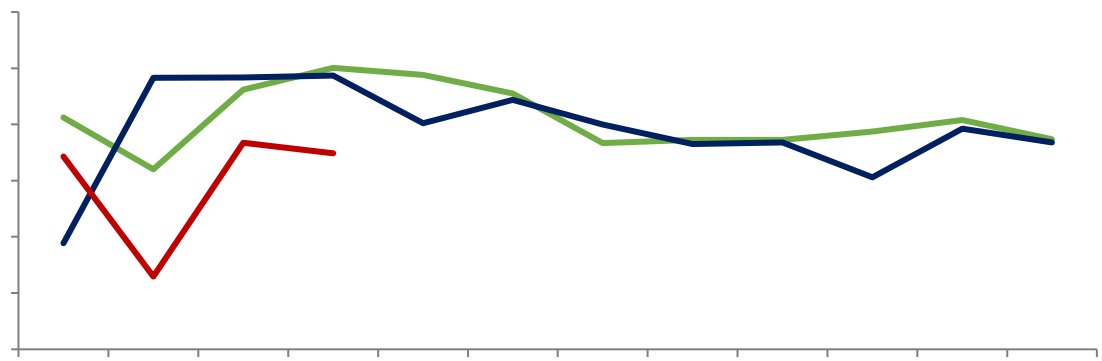


— 铜精矿现货冶炼盈亏平衡 — 铜精矿长单冶炼盈亏平衡



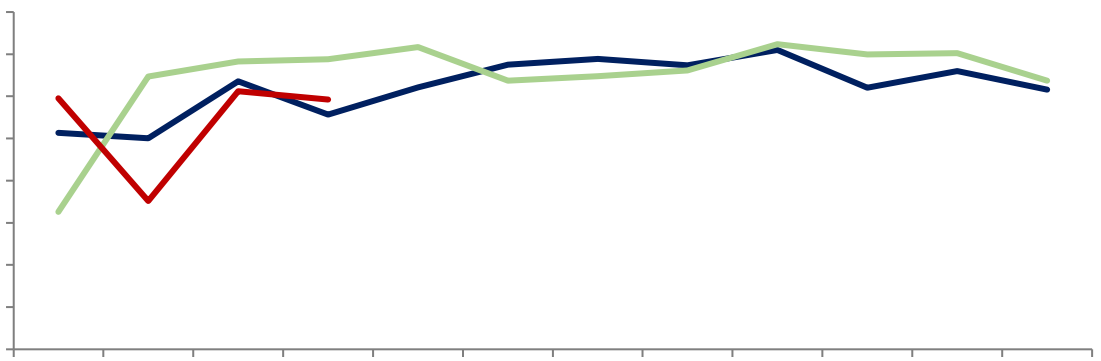


[Redacted Title]



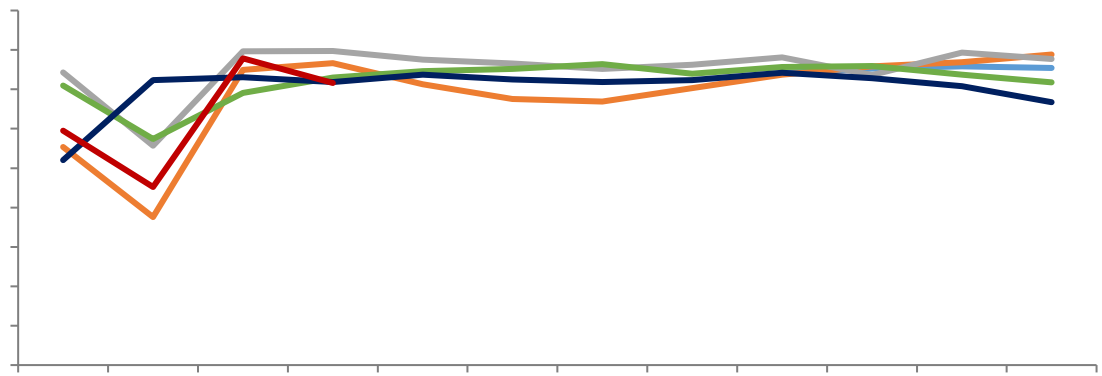
Legend: Green, Dark Blue, Red

[Redacted Title]



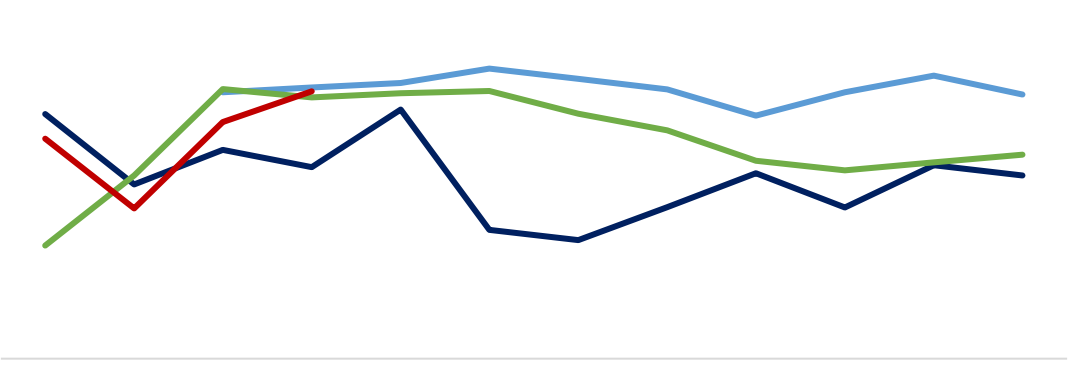
Legend: Dark Blue, Light Green, Red

[Redacted Title]



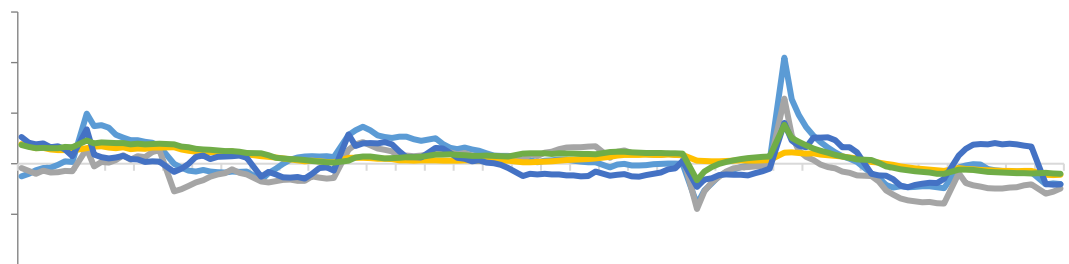
Legend: Light Blue, Orange, Grey, Green, Dark Blue, Red

[Redacted Title]

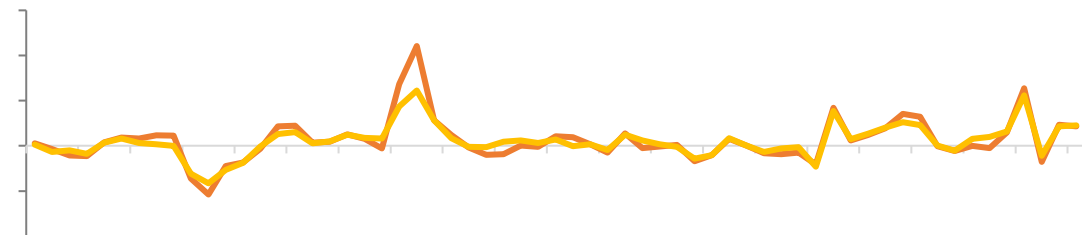


Legend: Light Blue, Dark Blue, Green, Red

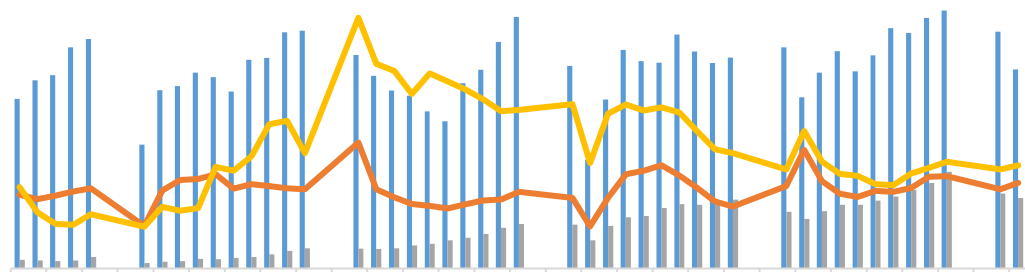
Blue header bar



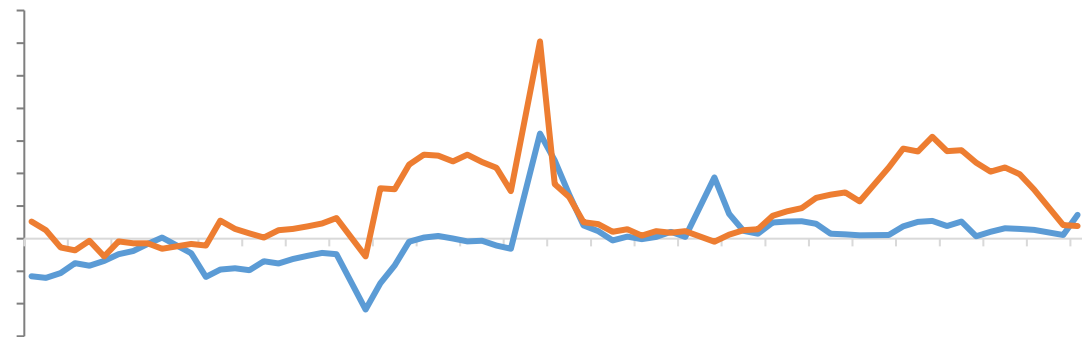
Blue header bar



Blue header bar



Blue header bar





LME

COMEX

SHFE

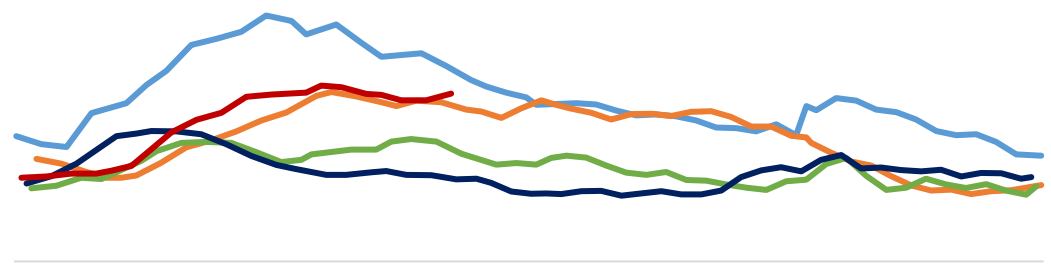
LME



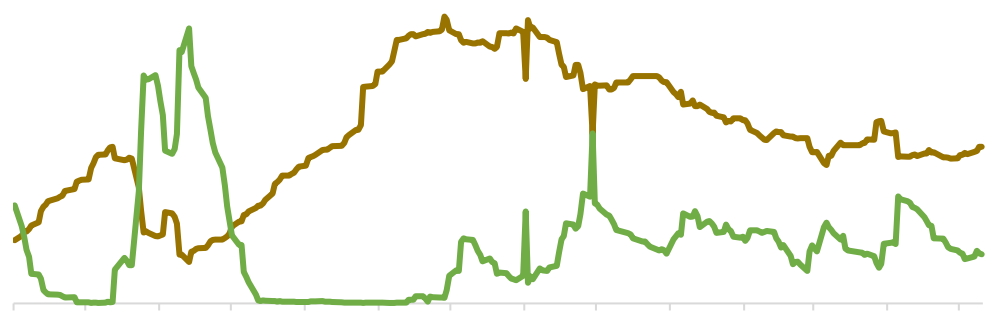
COMEX

[Blank blue header bar]

SHFE



LME



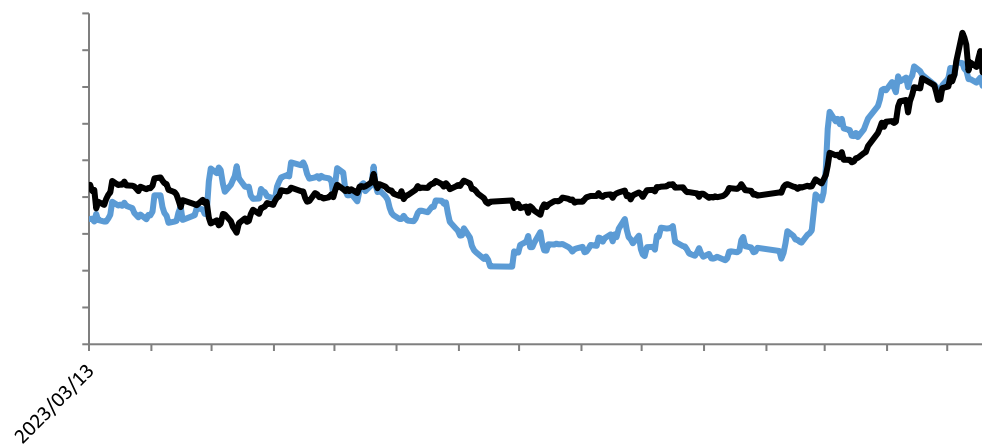


LME0-3



CFTC

LME





/

- 5 25 21.9
- 2025 24%
- 5 PMI 49.5
- GDP 1.3% 0.3%
- 4 PCE 2.8% 2.8% 2.8%

“ ”

2012 1497

F3022666 Z0013612 020-22836081 xuky@gzf2010.com.cn

021- 68905325 388 69 1 12 15 03	0571-89809624 2 1301	111	021-50568018 899 1201- 1202	0757-88772666 2 2302	28
0755-83533302 704A 705	0757-83607028 A 57 2 3006	2	0769-22900598 1501B	0763-3808515 2 04 05 06	25
0758-2270761 1704 1705 ²	010-63360528 5 32 101 12 1211	24 1 -	027-59219121 A 14 1401-9	0371-86533821 80 1 2 23 2301	193
0532-88910060 100 905	028-83279757 12 6 802	4	020-22836158 6	020-22836155	1



广州期货股份有限公司