

01



02



03



04

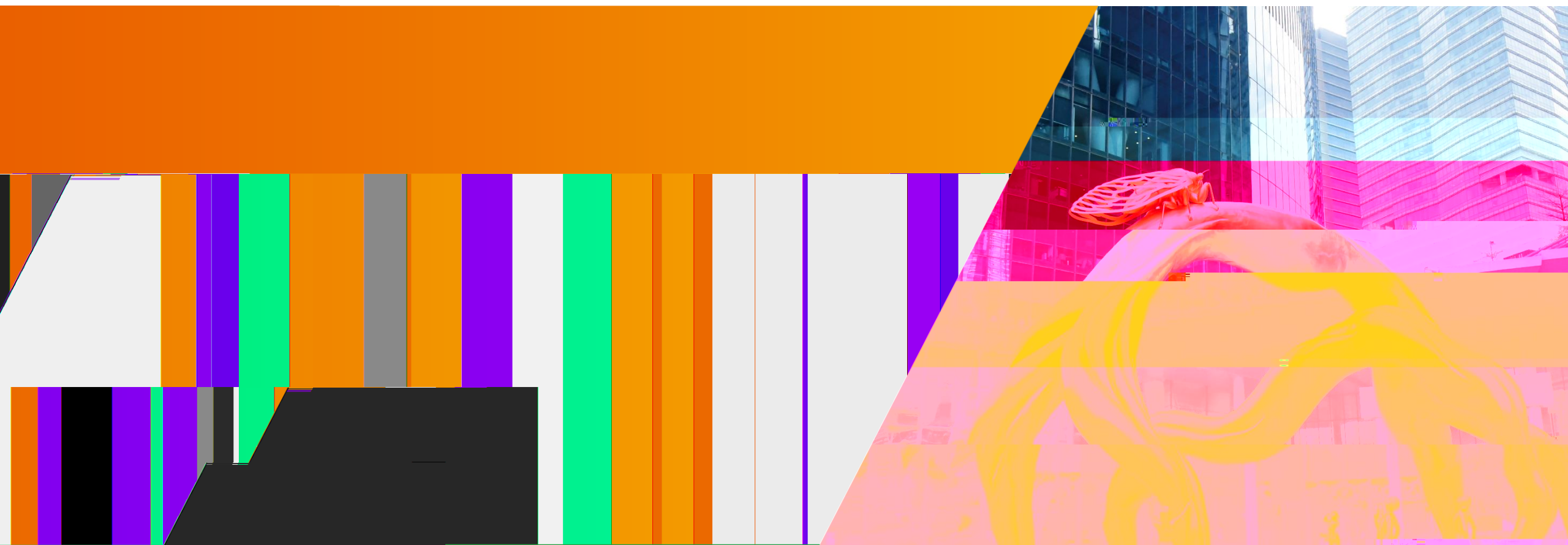


05



06

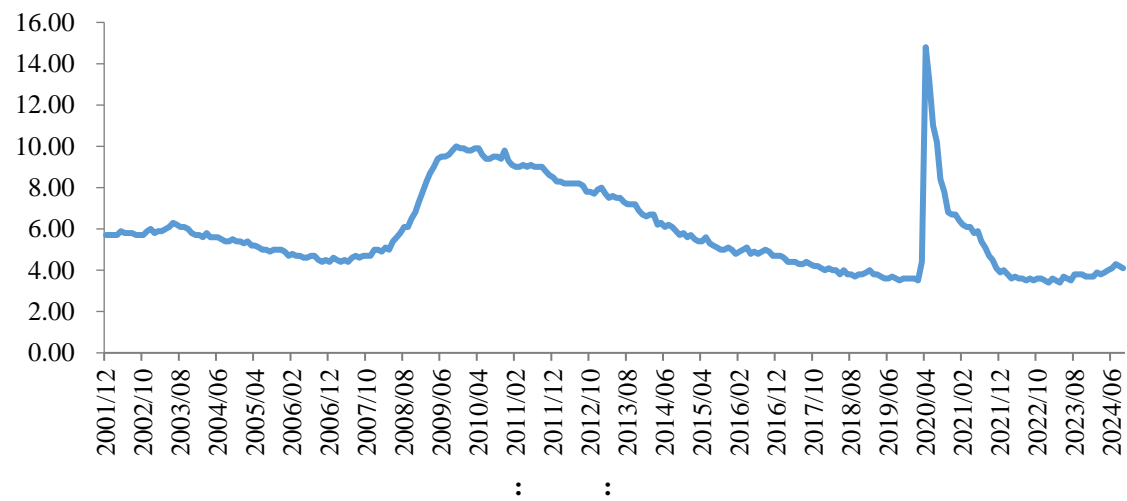




9 CPI

11

25BP



ISM



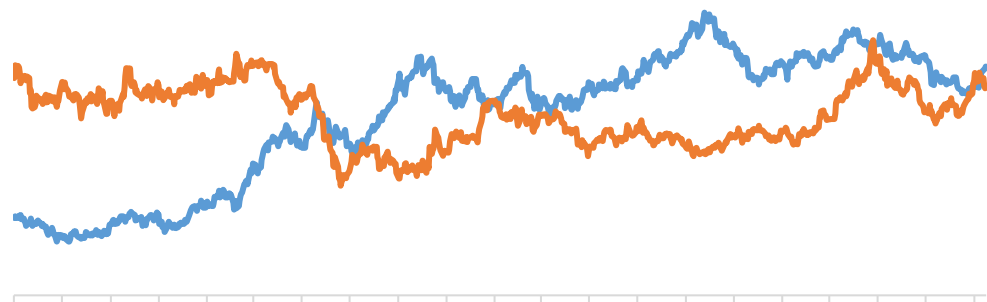
9 CPI

11

25BP

GDP

LME



10

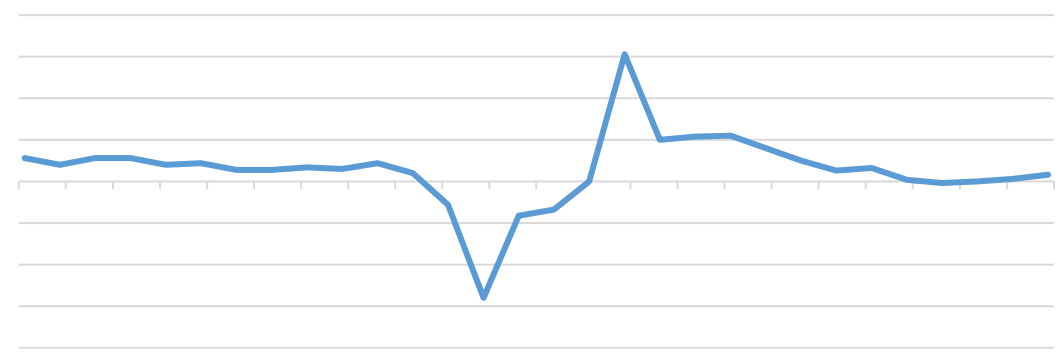
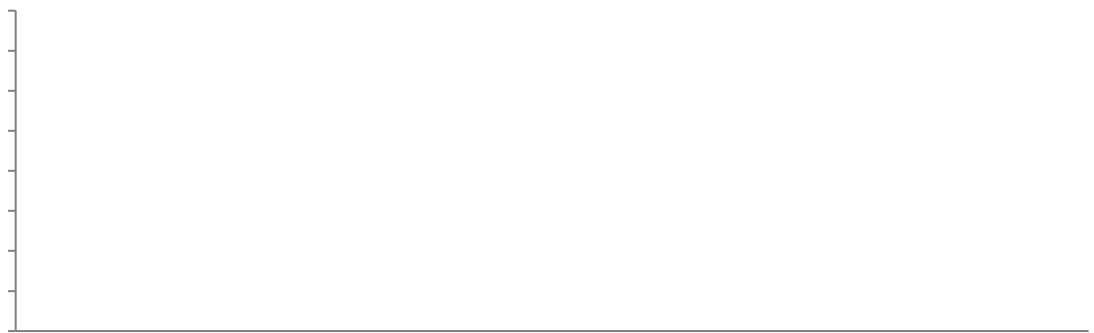
—

—

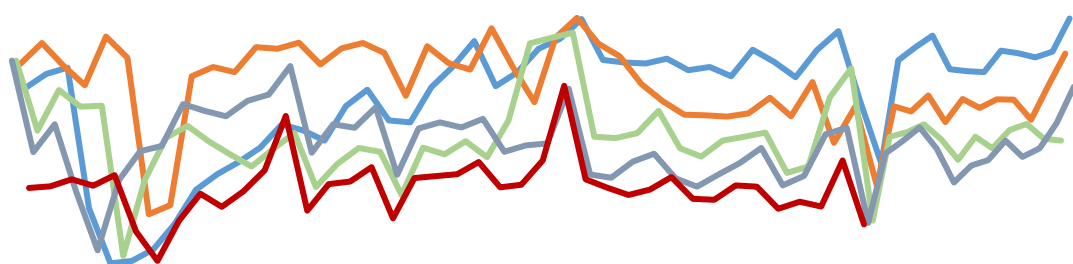


PMI

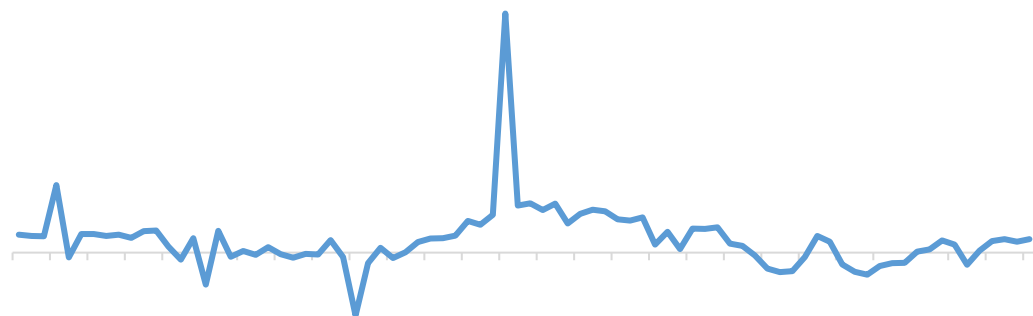
GDP



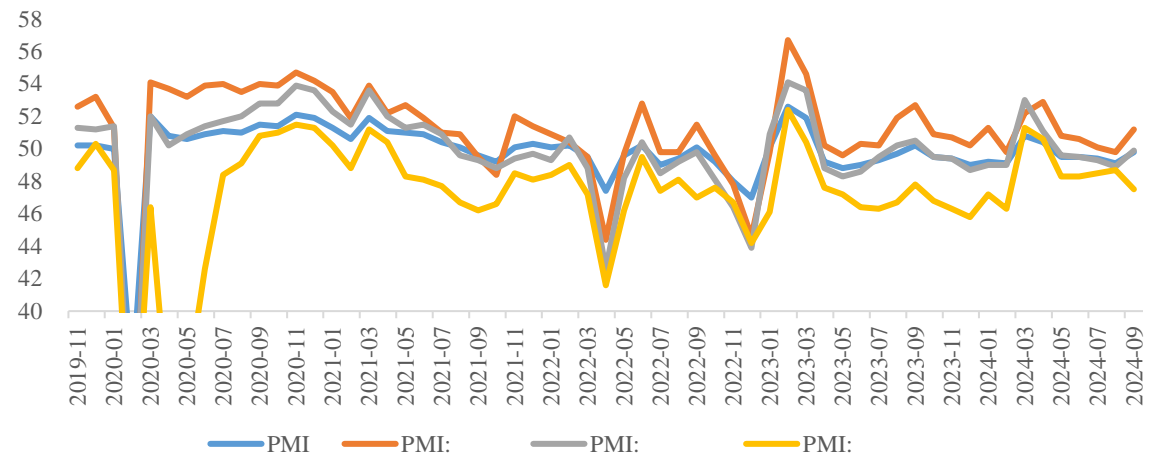
30 : :



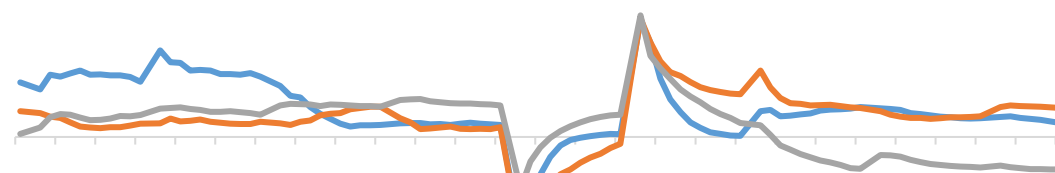
— — — — —



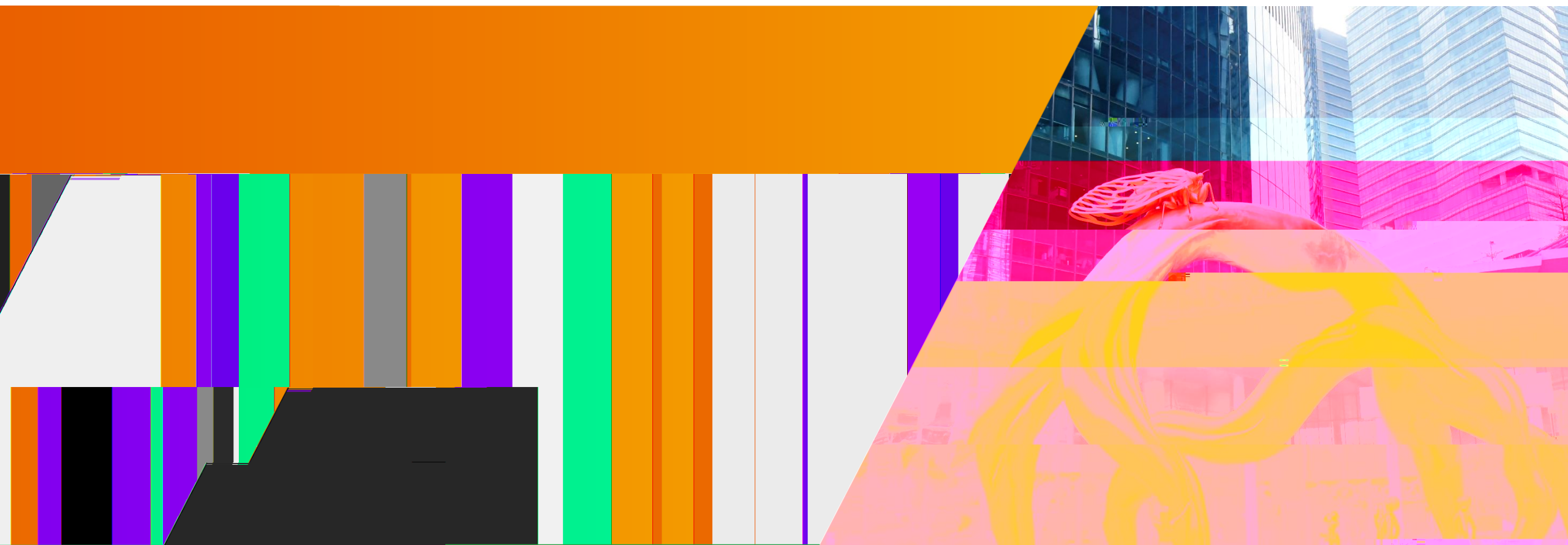
PMI



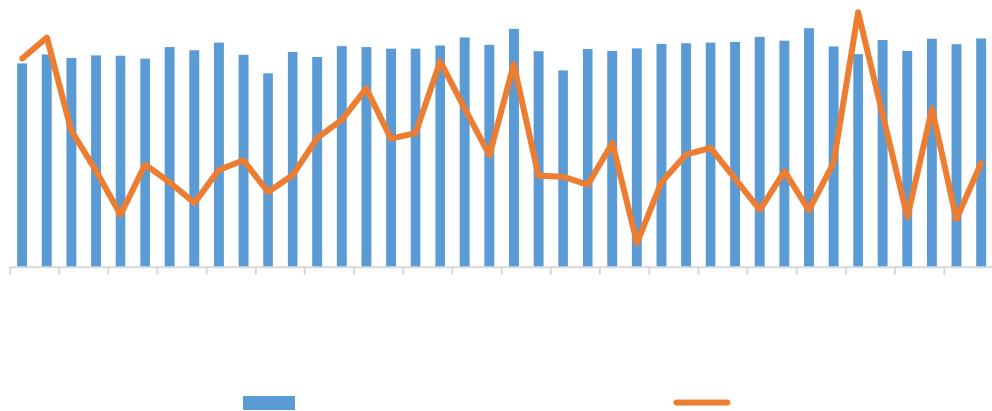
— PMI — PMI: — PMI: — PMI:



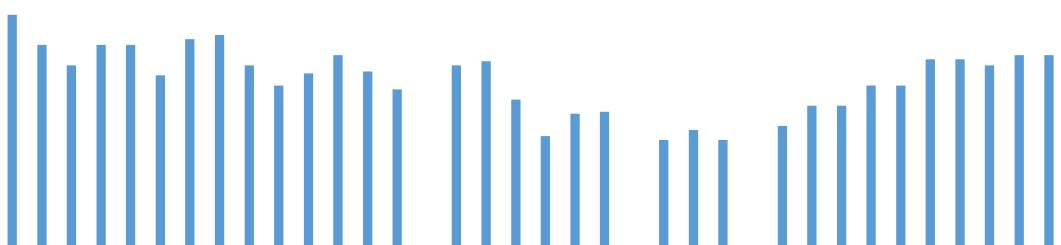
— — —



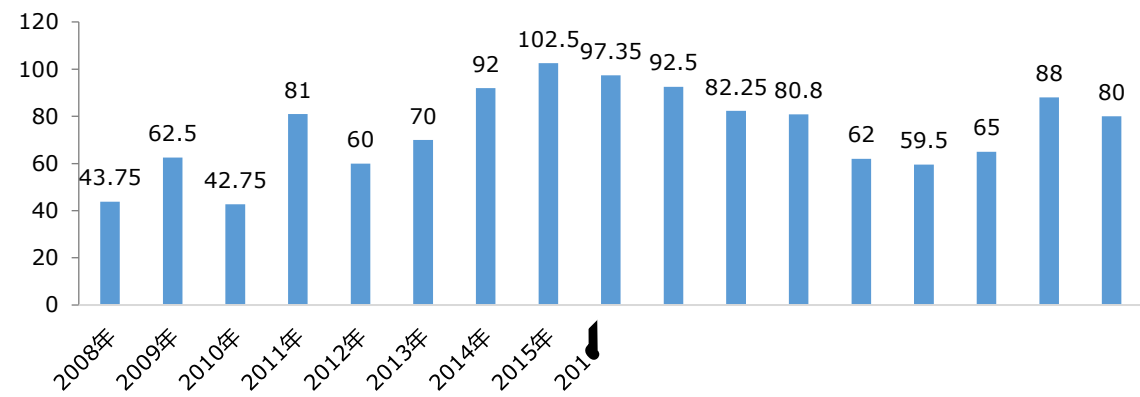
CSPT



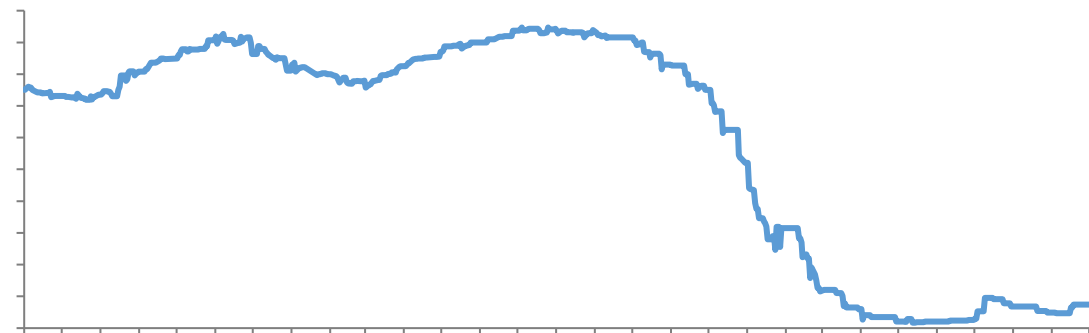
CSPT



TC



TC



1-9

+5.6% 9

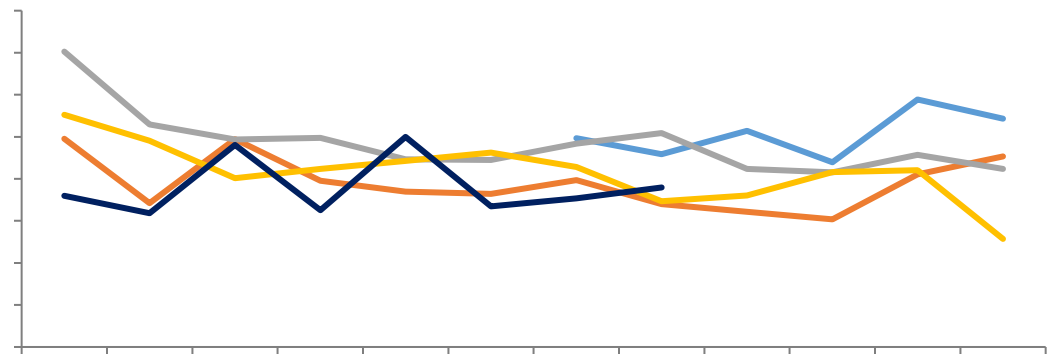
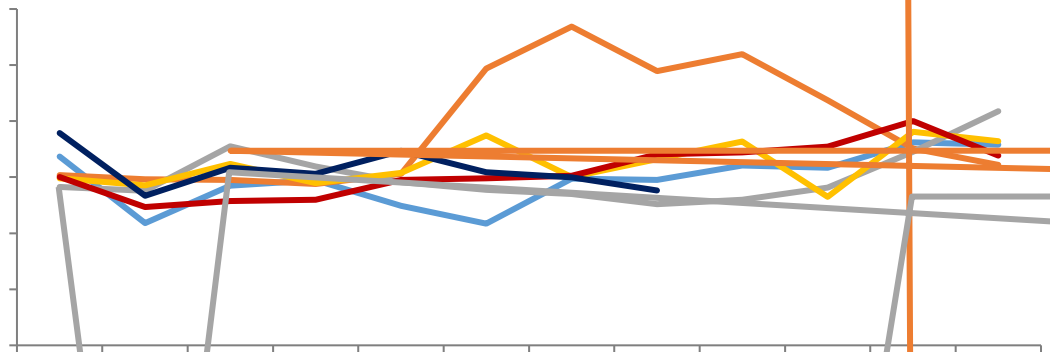
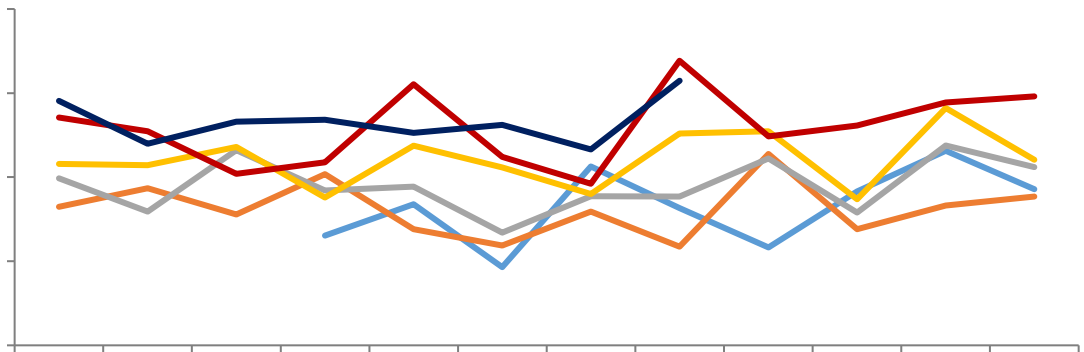
100.43

-0.76%

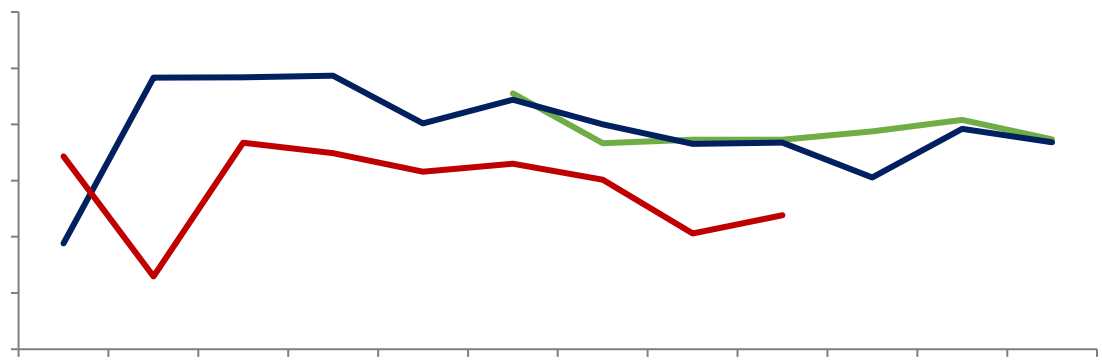
SMM

: (98%):



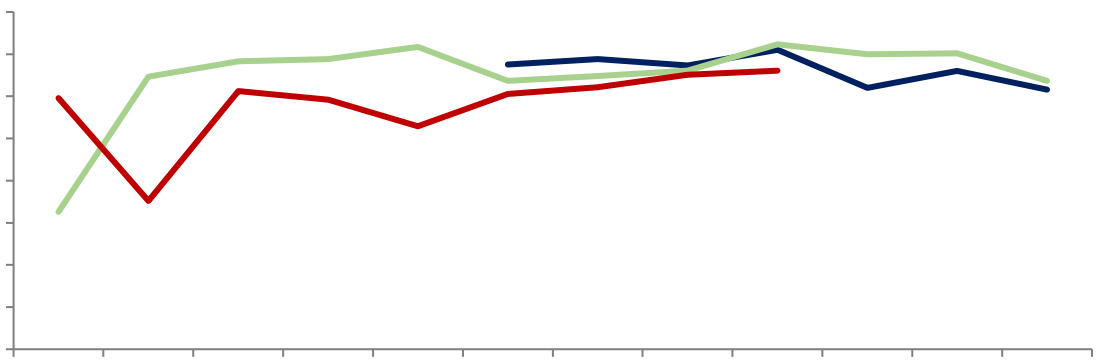


[Redacted Title]



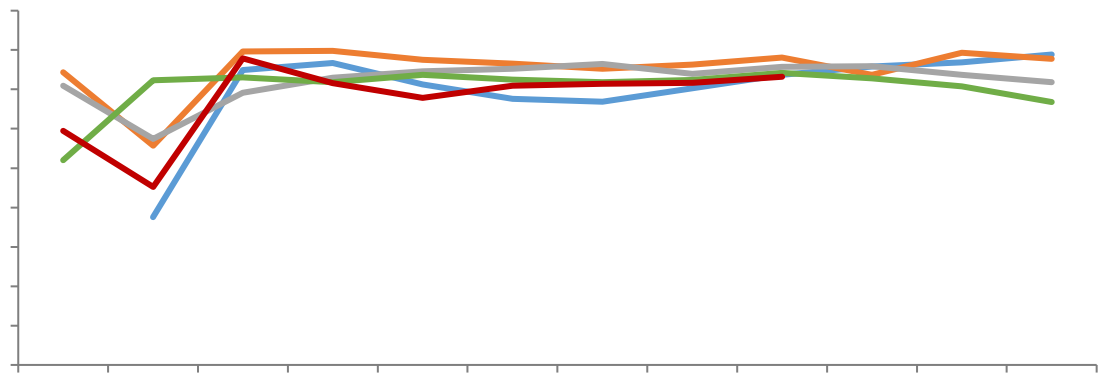
— Green — Blue — Red

[Redacted Title]



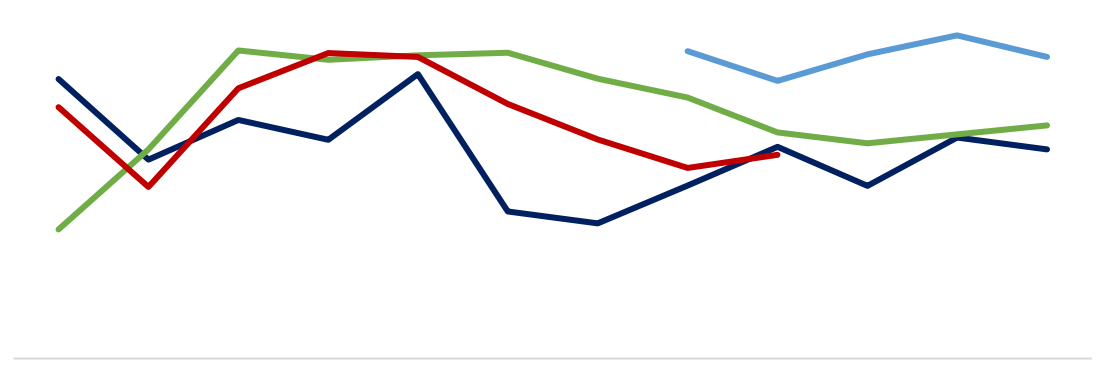
— Blue — Green — Red

[Redacted Title]



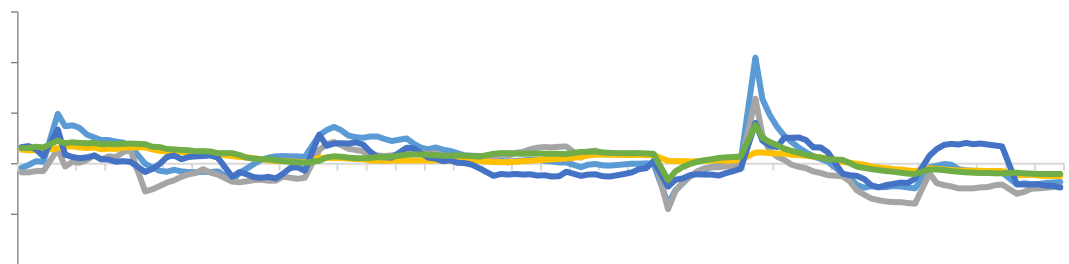
— Blue — Orange — Grey — Green — Red

[Redacted Title]

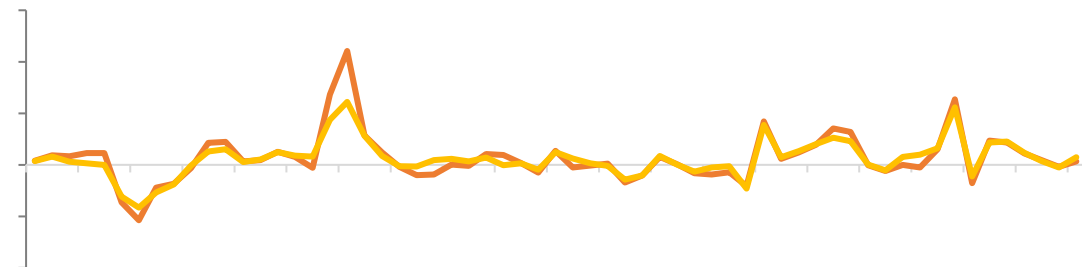


— Blue — Dark Blue — Green — Red

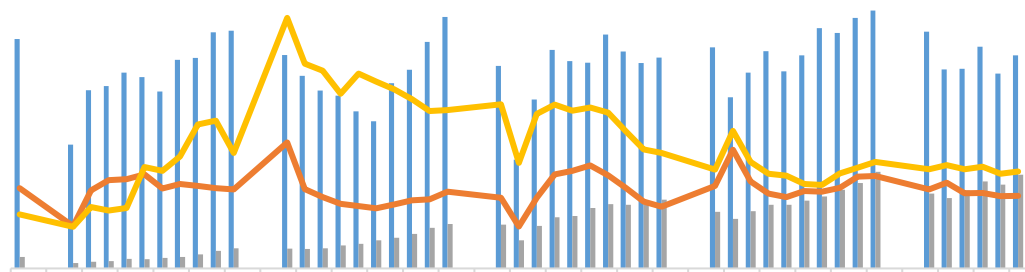
Blue header bar



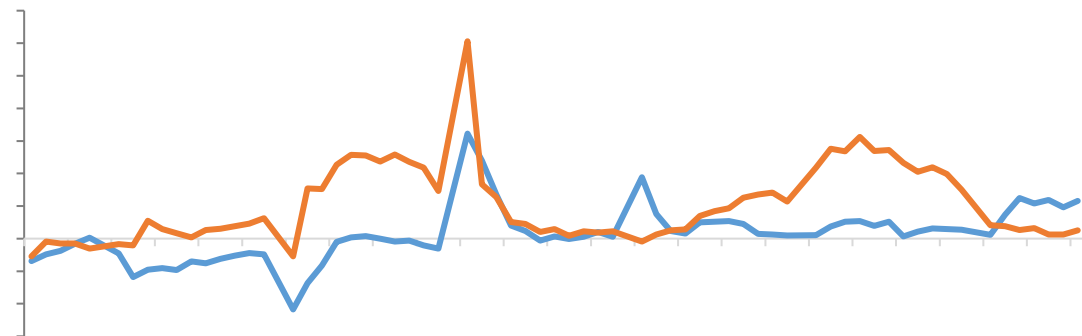
Blue header bar

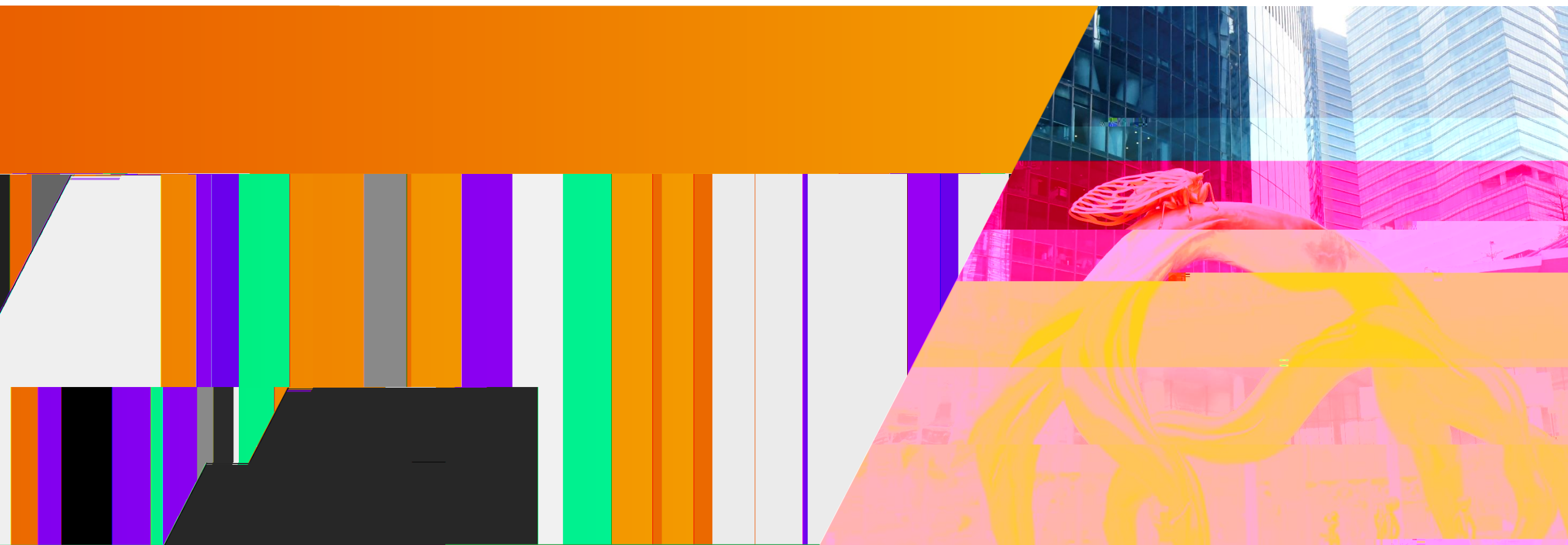


Blue header bar



Blue header bar



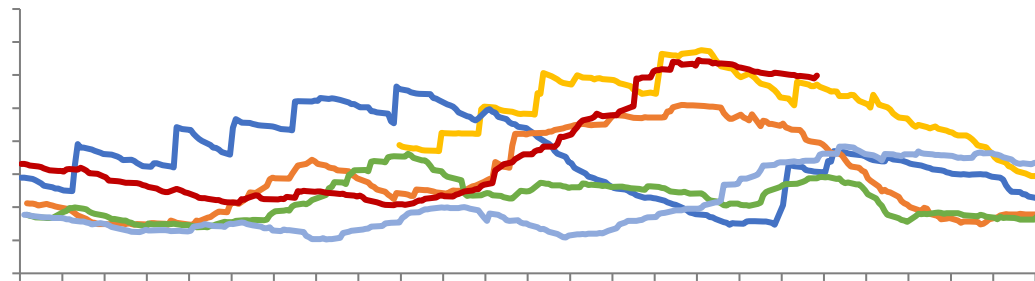


LME

COMEX

SHFE

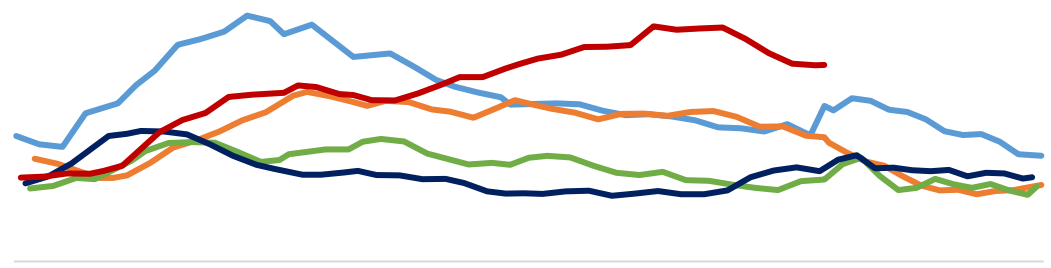
LME



COMEX

[Blank blue header bar]

SHFE



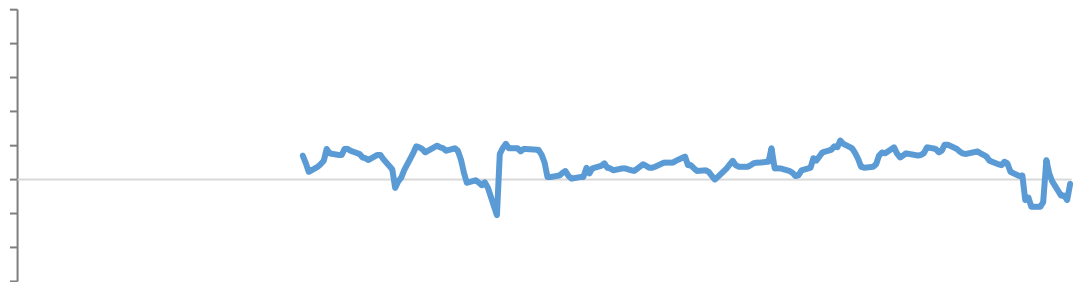
LME



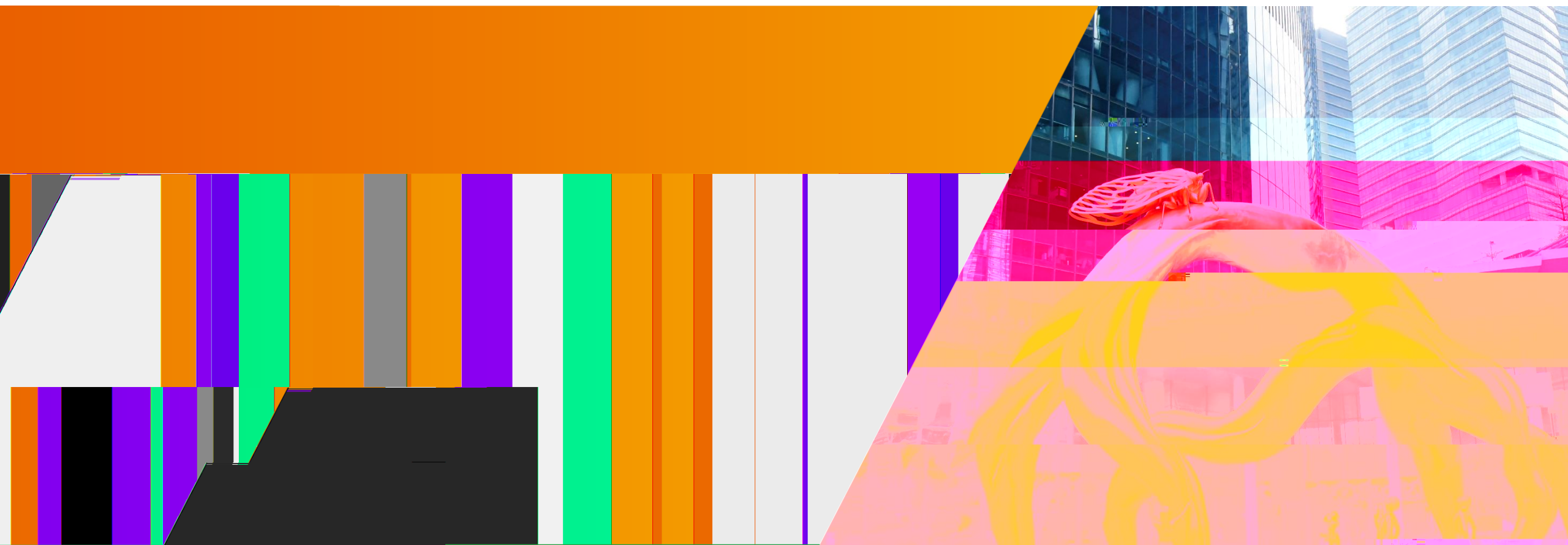
LME

-

-



LME0-3





/



021- 68905325 388 69 1 20 22 03A-3 04B	0571-89809624 111 2 1301	028-83279757 4 12 6 802	0757-88772666 28 2 2301 2302
0755-83533302 704A 705 A 57 2 3006	0757-83607028 2 1501B	0769-22900598 193 A 14 1401-9	0763-3808515 25 2 04 05 06
0758-2270761 1704 1705 2	010-63360528 24 1 - 5 32 101 12 1211	027-59219121 193 A 14 1401-9	0371-86533821 80 1 2 23 2301
0532-88910060 100 905	020-22836158 1 6	020-22836155 1 6	020-22836182 1 6
020-22836185 6 1	020-22836187 1 6	021-50390172 388 22 2201	



广州期货股份有限公司